

101/113

**U.S. PUBLIC LAND CORNER
MAINTENANCE**

Corner ID : SE Sec. 25, T17N-R2W

21702250000

<u>DATE</u>	<u>CREW</u>	<u>MONUMENT TYPE -----</u>
February 1, 2015	Zachariah P.Dechant Gary L. Dechant	Existing Harrison intact down 8" mag nails 1' S & W

References:

	<u>Bearing</u>	<u>Distance</u>
1) Set 3/4"x24" iron bar, down 6" , 3' east of Fire No. 22234 sign 20' north of Ira Ave	N70E	60.06'
2) Set 3/4"x24" iron bar, down 8" , 35' east of CTH "M" & 59' south of Ira Ave	S47E	80.79'
3) Set 3/4"x24" iron bar, down 8" on top of bank	S70W	111.34'
4) Set 3/4"x24" iron bar, down 6" , west side of field entrance 44' north of Indigo Ave	N48W	64.42'

Harrison and reference markers 1 & 3 set on straight lines.



I, Harley A. Sime, do hereby certify that on the 27th day of March 19 78, I found (evidence) (~~no evidence~~) of the SE corner of Section 25, T 17 N, R 2 W Fourth Principal Meridian, and I re-established said corner according to the Wisconsin Statutes as shown and described hereon.

Dated this 6th day of April 1978.
Harley Sime

County Surveyor
Title

History of original corner establishment:

F. Holden was here in October of 1905.
Schroeder set this corner in Jan. of 1895 and in June of 1897.

Description of corner evidence found:

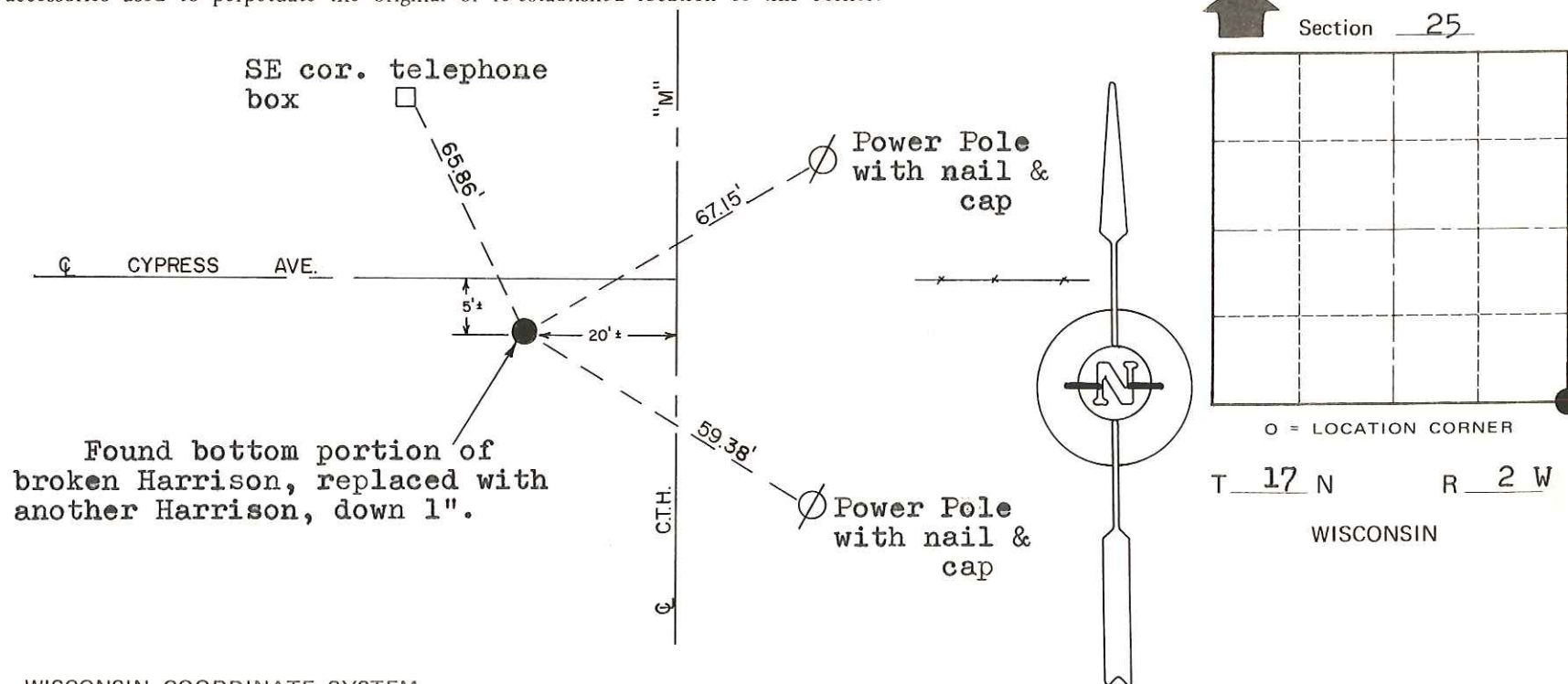
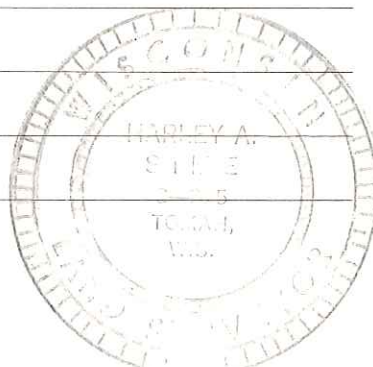
D. Marten set a Harrison in place of a 3/4" iron bar in April of 1974.

**See Reverse Side
For Maintenance**

Description of corner and witness monuments, references and accessories used to perpetuate the original or re-established location of this corner:

Witnesses to corner location:

G. Dechant, Crew Chief
C. Pietz



SURVEY CONTROL ORDER

Horizontal	_____
Vertical	_____

WISCONSIN COORDINATE SYSTEM

Corner	East (X)	North (Y)	Elevation (Z)	Zone
Control Sta. Name				

City, Village or Town Adrian

County of Monroe

COUNTY SURVEYOR FORM NO. 1