

CERTIFICATE

I, Harley A. Sime, do hereby certify that on the 21 day of November 19 75, I found ~~(evidence)~~ (no evidence) of the Center 1/4 corner of Section 24, T 17 N, R 2 W, Fourth Principal Meridian, and I re-established said corner according to the Wisconsin Statutes as shown and described hereon.
Dated this 29th day of March 19 77.

County Surveyor
Title

CERTIFIED LAND CORNER

No. 79B

21702242020

History of original corner establishment:

O.R.Dahl set this corner in August of 1868.

Description of corner evidence found:

Set corner "by law" after surveying out Section 24. Fit present occupied corner very well. No evidence of bearing trees from 1868.

Note: On March 27, 1978, G. Dechant and C. Pietz found the pipe bent and replaced it with a 1 1/4" iron bar.

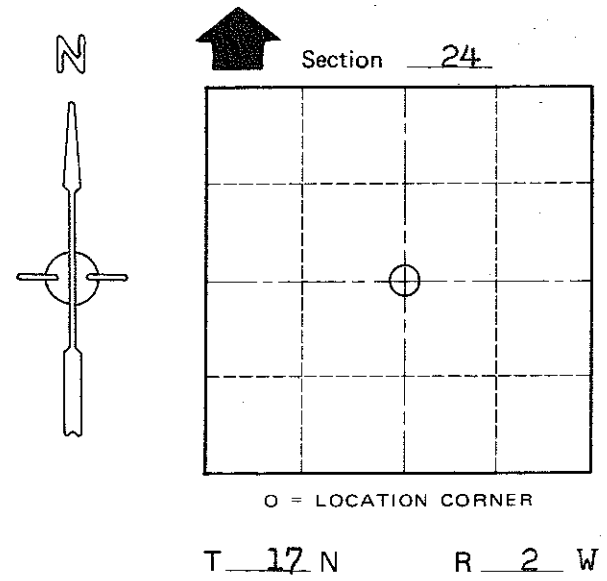
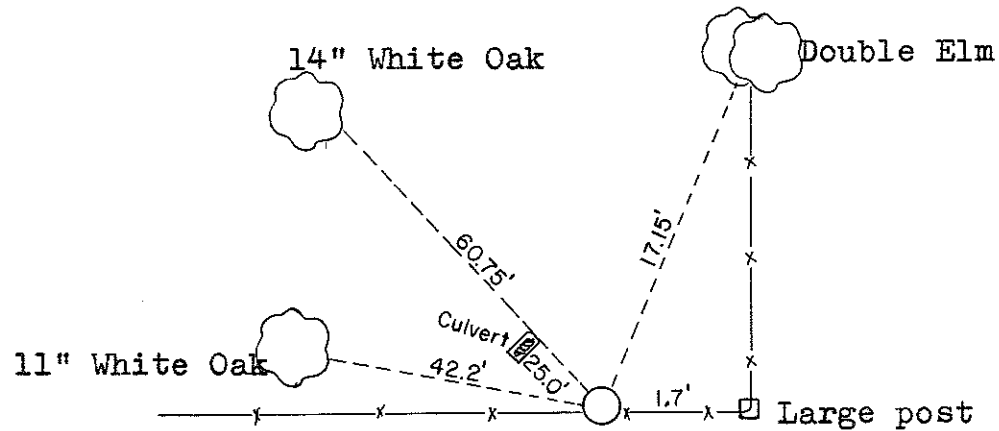
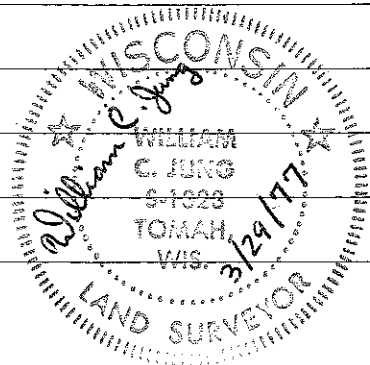
COUNTY SURVEYOR FORM NO. 1

Description of corner and witness monuments, references and accessories used to perpetuate the original or re-established location of this corner:

Set 1 1/2" iron pipe, up 12".

Witnesses to corner location:

Jung
Malliet
Lueck



(Note: all trees blazed with nail & caps in them.)

SURVEY CONTROL ORDER

Horizontal _____
Vertical _____

WISCONSIN COORDINATE SYSTEM

Corner	East (X)	North (Y)	Elevation (Z)	Zone
Control Sta. Name				

Approved: **HARLEY A. SIME**
MONROE CO. SURVEYOR

City, Village or Town Adrian

County of Monroe