

CERTIFICATE

CERTIFIED LAND CORNER

No. 82

**21702240020**

I, Harley A. Sime, do hereby certify that on the 21 day of November 1975, I found (evidence) ~~(no evidence)~~ of the South 1/4 corner of Section 24, T 17 N, R 2 W, Fourth Principal Meridian, and I re-established said corner according to the Wisconsin Statutes as shown and described hereon.

Dated this 29th day of March 1977.

History of original corner establishment:

O.R.Dahl was at this corner in August of 1868.

Description of corner evidence found:

Set Harrison in the fence intersection. Said point fits Section 24 very well. Accepted corner as best available evidence. Also found remains of possible bearing tree.

County Surveyor  
Title

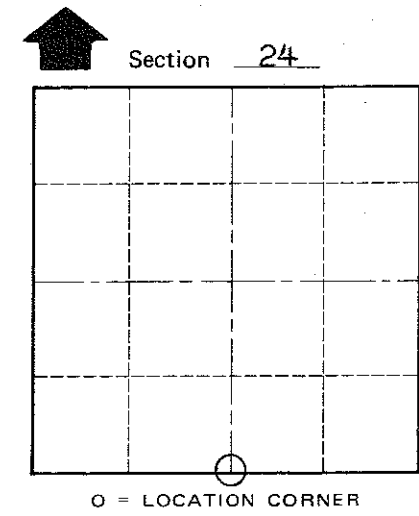
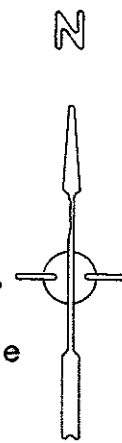
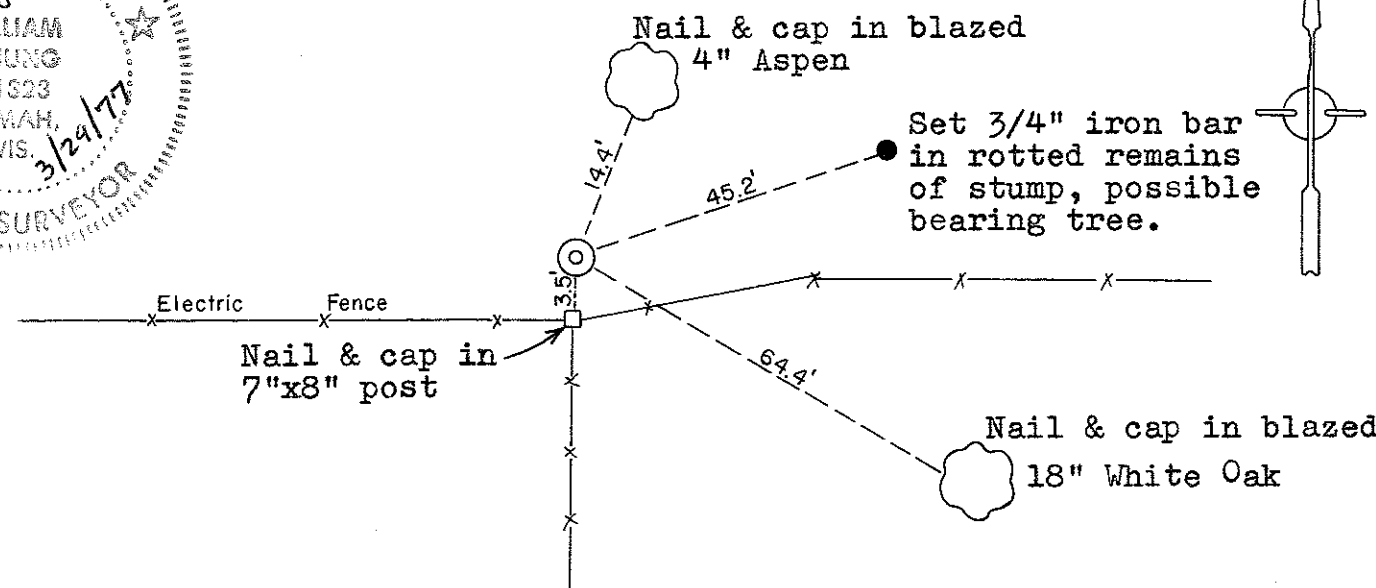
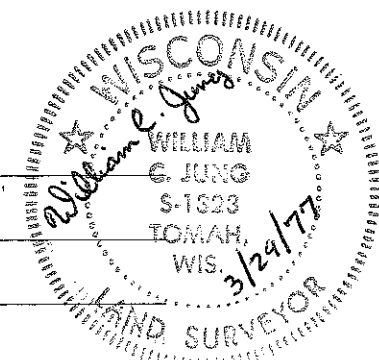
Approved: **HARLEY A. SIME**  
**MONROE CO. SURVEYOR**

Description of corner and witness monuments, references and accessories used to perpetuate the original or re-established location of this corner:

Set Harrison up 4".

Witnesses to corner location:

Malliet  
Jung  
Ineck



T 17 N R 2 W  
WISCONSIN

COUNTY SURVEYOR FORM NO. 1

SURVEY CONTROL ORDER

Horizontal	_____
Vertical	_____

WISCONSIN COORDINATE SYSTEM

Corner	East (X)	North (Y)	Elevation (Z)	Zone
Control Sta. Name				

City, Village or Town Adrian

County of Monroe