

CERTIFICATE

I, Nicholas M. Hillmer, do hereby certify that this document and the data contained herein was prepared by me or under my direct supervision and that I am a duly Licensed Land Surveyor under the laws of the State of Wisconsin.

Dated this 21st day of May, 2013



Nicholas M. Hillmer, P.L.S. 2909
Anderson Engineering of Minnesota, LLC.

CERTIFIED LAND CORNER

History of corner established since Original Government Survey

The McCoy boundary notes show a fence corner at this location. In June of 1992, Gary Dechant found and accepted the remains of an old fence corner as the best available evidence. Dechant set a Harrison monument at the location.

Description of evidence found

On October 30th, 2012, Anderson Engineering of Minnesota located the Harrison monument 0.3 feet above grade and 1.0 foot north of a witness post with a survey marker sign.

No. 21702212000



Description of corner and witness monuments, references and accessories used to perpetuate the original or re-established location of this corner:

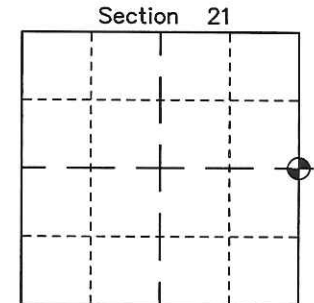
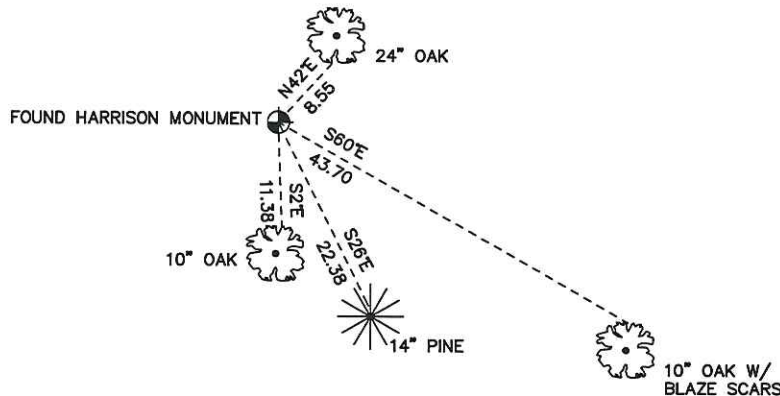
Witnesses to corner location:

Nick Hillmer
Josh Oslund
Dan Greenwald

MONROE COUNTY
COORDINATE SYSTEM
NAD 1983 (2007)

HARRISON MONUMENT
Northing (Y) 376331.06
Easting (X) 678893.46

Base Station - 22 182W
Northing (Y) 408053.25
Easting (X) 679287.00



⊕ = LOCATION CORNER
Corner I.D. E 1/4 21
T 17 N R 2 W
Town of Adrian
Monroe County, WI.

All distances are shown in U.S. Survey Feet.
Ties are to 60D nails set in trees.
Bearings are for tie reference purposes only.
Coordinates were derived from RTK GNSS procedures.

21702212000

I, Gary L. Dechant, do hereby certify that on the 1st day of June 19 92, I found (evidence) (~~no evidence~~) of the W/4 corner of Sec. 22, T17 N, R 2W Fourth Principal Meridian, and I re-established said corner according to the Wisconsin Statutes as shown and described hereon.

Dated this 9th day of June 19 92.

Gary L. Dechant

Reg. Land Surveyor, S-1744
Title

History of corner establishment since Original Government Survey

The records of the Camp McCoy Survey in the 1940's show a fence corner.

Description of corner evidence found:

Accepted remains of old fence corner as best available evidence. This location is only 2 1/2 feet from being half way between section corners. The distance from this corner to the SW corner of the section measures 2606.63 feet and to the McCoy Marker at the SW corner of the NW/4-SW/4 measures 1304.85 feet, fitting overall section line datum extremely well.

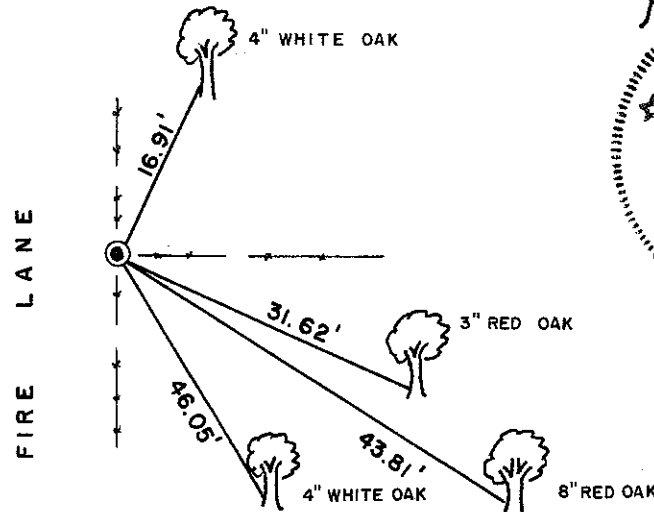
COUNTY SURVEYOR FORM NO. 1

Description of corner and witness monuments, references and accessories used to perpetuate the original or re-established location of this corner:

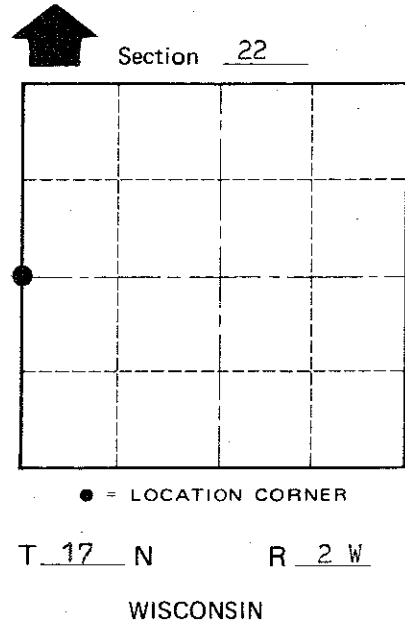
Witnesses to corner location:

David E. Madison
Gary L. Dechant

Set TCP, survey sign 1' south



Gary L. Dechant
WISCONSIN
GARY L. DECHANT
S-1744
CAMP DOUGLAS, WI
LAND SURVEYOR
June 9, 1992



SURVEY CONTROL ORDER

Horizontal	_____
Vertical	_____

WISCONSIN COORDINATE SYSTEM

Corner	East (X)	North (Y)	Elevation (Z)	Zone
Control Sta. Name				

(Trees double blazed with 20d nail set)

~~City, Village or~~ Town Adrian
County of Monroe