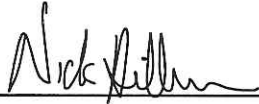


CERTIFICATE

I, Nicholas M. Hillmer, do hereby certify that this document and the data contained herein was prepared by me or under my direct supervision and that I am a duly Licensed Land Surveyor under the laws of the State of Wisconsin.

Dated this 21st day of May, 2013



Nicholas M. Hillmer, P.L.S. 2909
Anderson Engineering of Minnesota, LLC.

CERTIFIED LAND CORNER

History of corner established since Original Government Survey

The 1940's McCoy boundary notes show a corner at this location. In June of 1994 Gary Dechant found and accepted the fence corner as the best available evidence. Dechant set a TCP monument at the location.

Description of evidence found

On October 31st, 2012, Anderson Engineering of Minnesota located the TCP monument flush with ground. The monument is 1.0 foot south of a fence that runs east, and 2.5 feet east of a fence that runs south.

No. 21702210020



Description of corner and witness monuments, references and accessories used to perpetuate the original or re-established location of this corner:

Witnesses to corner location:

Nick Hillmer
Josh Oslund
Dan Greenwald

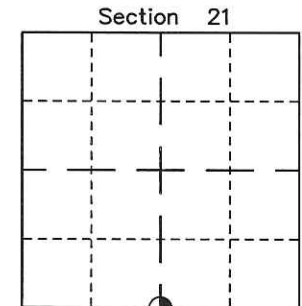
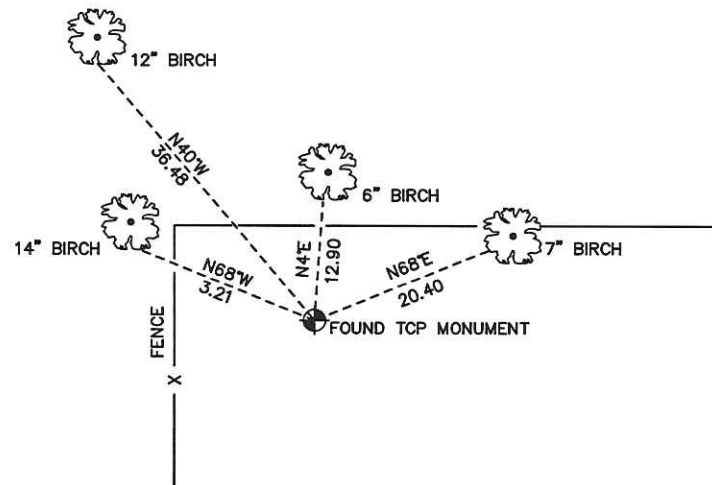
MONROE COUNTY
COORDINATE SYSTEM
NAD 1983 (2007)

TCP MONUMENT

Northing (Y) 373734.55
Easting (X) 676258.53

Base Station - 22 182W

Northing (Y) 408053.25
Easting (X) 679287.00



● = LOCATION CORNER
Corner I.D. S 1/4 21
T 17 N R 2 W
Town of Adrian
Monroe County, WI.

All distances are shown in U.S. Survey Feet.
Ties are to 60D nails set in trees.
Bearings are for tie reference purposes only.
Coordinates were derived from RTK GNSS procedures.

21702210020

I, Gary L. Dechant, do hereby certify that on the 27th day of June 19 94, I found (evidence) (~~no evidence~~) of the N¹/₄ corner of Section 28, T 17 N, R 2 W Fourth Principal Meridian, and I re-established said corner according to the Wisconsin Statutes as shown and described hereon.

Dated this 30 day of June 19 94.

Gary L. Dechant
RLS 1744
Title

History of corner establishment since Original Government Survey

The surveyors for Camp McCoy was here during the 1940's.

Description of corner evidence found:

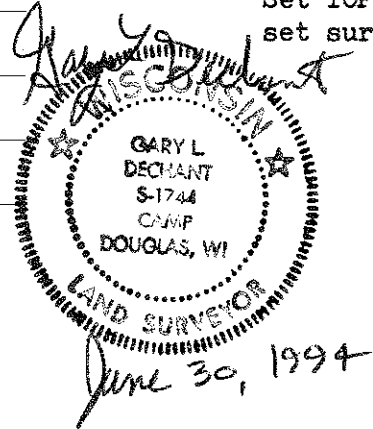
Accepted the fence corner as best available evidence, any other physical evidence has probably been destroyed by heavy equipment of Fort McCoy.

Description of corner and witness monuments, references and accessories used to perpetuate the original or re-established location of this corner:

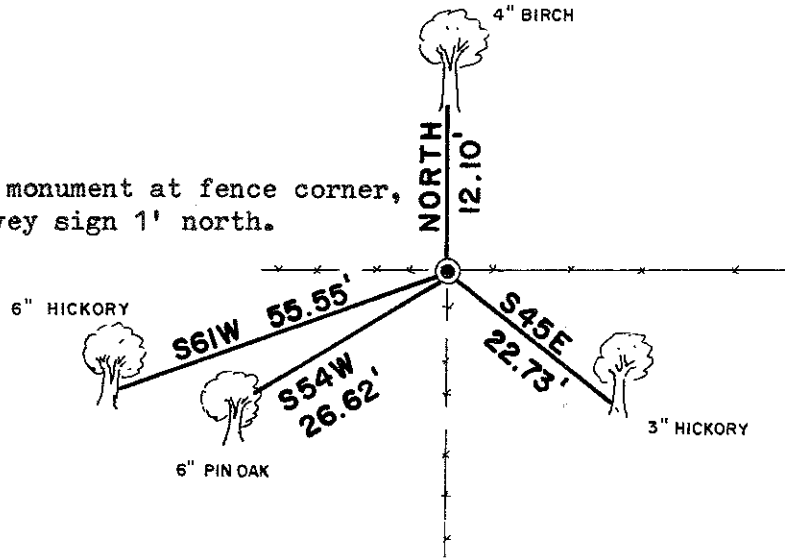
Witnesses to corner location:

David E. Madison

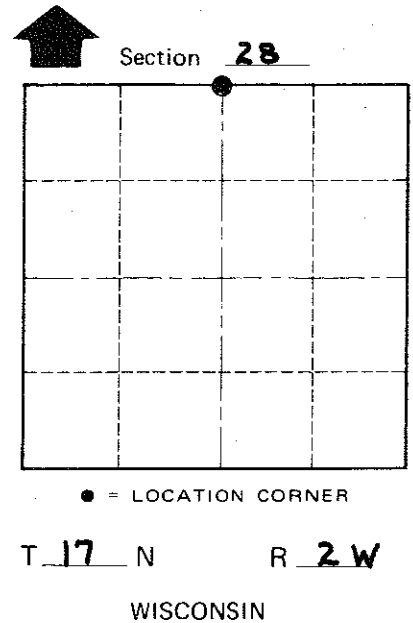
Gary L. Dechant



Set TCP monument at fence corner, set survey sign 1' north.



(Trees double blazed with 20d nail set)



COUNTY SURVEYOR FORM NO. 1

SURVEY CONTROL ORDER

Horizontal _____
Vertical _____

WISCONSIN COORDINATE SYSTEM

Corner	East (X)	North (Y)	Elevation (Z)	Zone
Control Sta. Name				

City, Village or Town Adrian

County of Monroe