

U.S. LAND CORNER MAINTENANCE

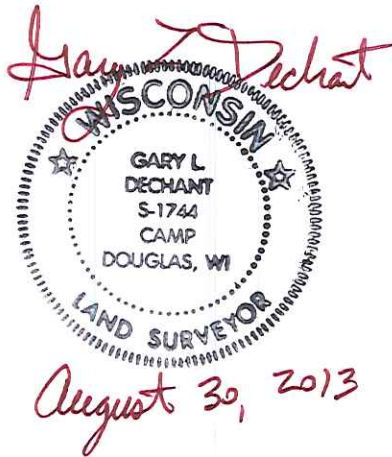
Corner ID : SE Sec. 21, T17N-R2W

21702210000

<u>DATE</u>	<u>CREW</u>	<u>MONUMENT TYPE -----</u>
April 24, 2013	Zachariah P. Dechant Gary L. Dechant	Existing Harrison at fence corner

References:


	<u>Bearing</u>	<u>Distance</u>
1) Set 3/4" iron pipe, down 12"	N25E	20.56'
2) Set 1/2"x18" iron bar, down 12"	S58E	14.18'
3) Set 3/4" x24" iron pipe, flush, SW of trail	S67W	16.56'
4) Set 3/4" iron pipe, flush	N38W	27.08'



CERTIFICATE

I, Nicholas M. Hillmer, do hereby certify that this document and the data contained herein was prepared by me or under my direct supervision and that I am a duly Licensed Land Surveyor under the laws of the State of Wisconsin.

Dated this 23rd day of May, 2013



Nicholas M. Hillmer, P.L.S. 2909
Anderson Engineering of Minnesota, LLC.

CERTIFIED LAND CORNER

History of corner established since Original Government Survey

Gary L. Dechant accepted an old fence corner as the best available evidence and set a Harrison monument at this location.

Description of evidence found

On February 26th, 2013, Anderson Engineering of Minnesota located the Harrison monument 0.4 feet above grade and 1 foot east of a witness post. The monument is on a downed north-south fence line with stones set around the Harrison monument.

No. 21702210000



Description of corner and witness monuments, references and accessories used to perpetuate the original or re-established location of this corner:

Witnesses to corner location:

Nick Hillmer
Josh Oslund
Dan Greenwald

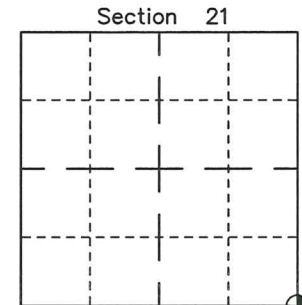
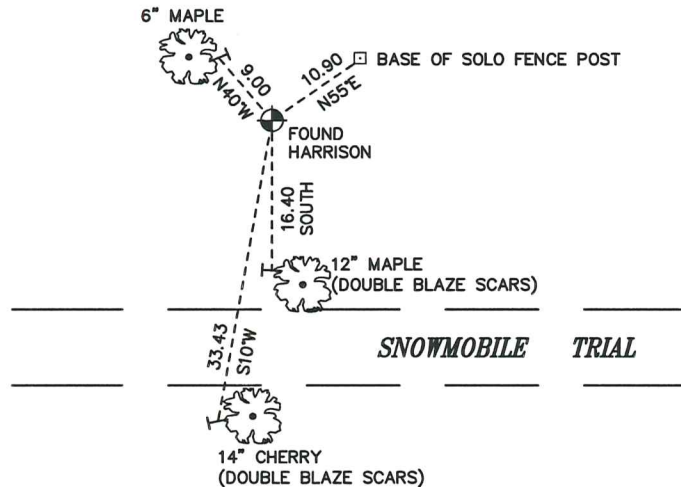


MONROE COUNTY
COORDINATE SYSTEM
NAD 1983 (2007)

HARRISON MONUMENT
Northing (Y) 373724.63
Easting (X) 678886.34

Base Station - 22 182W
Northing (Y) 408053.25
Easting (X) 679287.00

All distances are shown in U.S. Survey Feet.
Ties are to 60D nails set in trees.
Bearings are for tie reference purposes only.
Coordinates were derived from RTK GNSS procedures.



⊕ = LOCATION CORNER
Corner I.D. SE 21
T 17 N R 2 W
Town of Adrian
Monroe County, WI.

CERTIFICATE

CERTIFIED LAND CORNER

No. 87

21702210000

I, Gary L. Dechant, do hereby certify that on the 1st day of June 1992, I found (evidence) (~~no evidence~~) of the SW corner of Section 22, T17 N, R2 W Fourth Principal Meridian, and I re-established said corner according to the Wisconsin Statutes as shown and described hereon.

Dated this 9th day of June 1992.

Gary L. Dechant

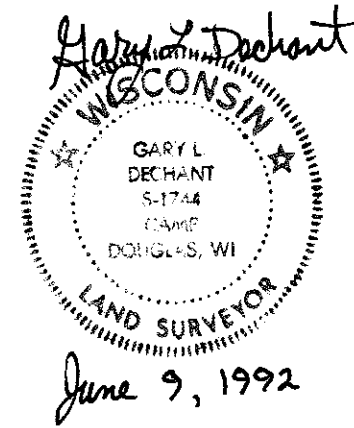
Reg. Land Surveyor, S-1744
Title

History of corner establishment since Original Government Survey

No known history since the original government survey.

Description of corner evidence found:

Accepted old fence corner as best available evidence.



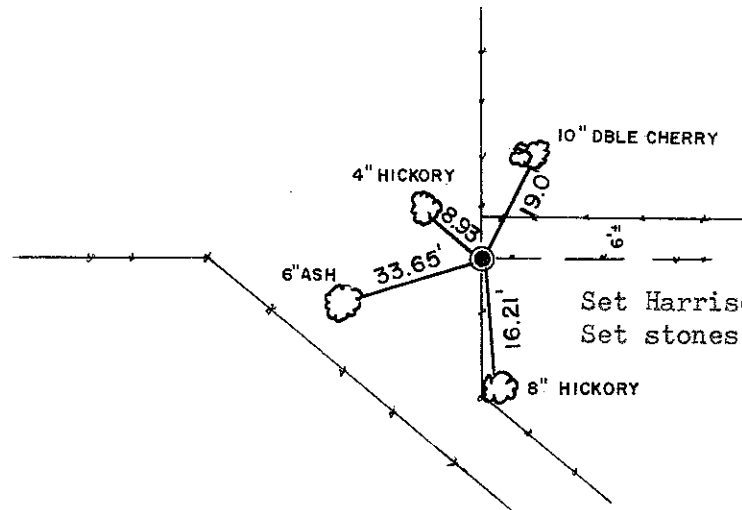
COUNTY SURVEYOR FORM NO. 1

Description of corner and witness monuments, references and accessories used to perpetuate the original or re-established location of this corner:

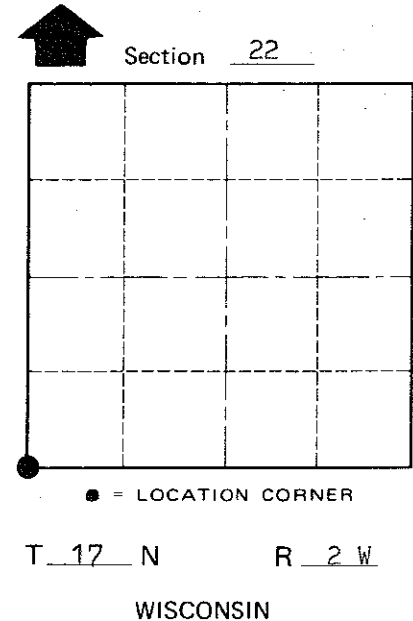
Witnesses to corner location:

David E Madison

Gary L. Dechant



Set Harrison Monument, survey sign 1' South.
Set stones around Harrison.



(Trees double blazed with 20d nail set)

SURVEY CONTROL ORDER

Horizontal	_____
Vertical	_____

WISCONSIN COORDINATE SYSTEM

Corner	East (X)	North (Y)	Elevation (Z)	Zone
Control Sta. Name				

~~City, Village or~~ Town Adrian
County of Monroe