

CERTIFICATE

I, Nicholas M. Hillmer, do hereby certify that this document and the data contained herein was prepared by me or under my direct supervision and that I am a duly Licensed Land Surveyor under the laws of the State of Wisconsin.

Dated this 23rd day of May, 2013



Nicholas M. Hillmer, P.L.S. 2909
Anderson Engineering of Minnesota, LLC.

CERTIFIED LAND CORNER

History of corner established since Original Government Survey

In 1993 Lawrence A. Feddersen set a Harrison monument at the corner that is online and equal distance from each section corner. Feddersen states that the ground in the immediate area has been disturbed by large equipment.

Description of evidence found

On October 30th, 2012, Anderson Engineering of Minnesota located the Harrison monument flush with the ground and 1.0 foot north of a witness post with survey marker sign.

No. 21702200020



Description of corner and witness monuments, references and accessories used to perpetuate the original or re-established location of this corner:

Witnesses to corner location:

Nick Hillmer
Josh Oslund
Dan Greenwald

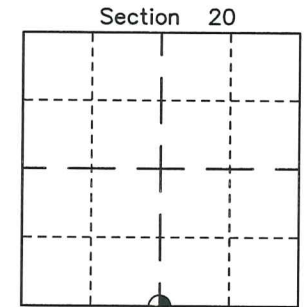
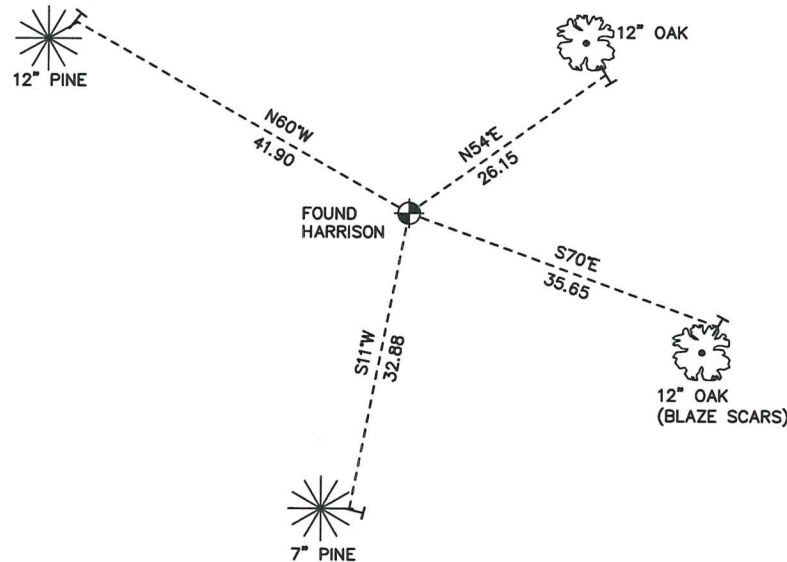


MONROE COUNTY
COORDINATE SYSTEM
NAD 1983 (2007)

HARRISON MONUMENT
Northing (Y) 373691.22
Easting (X) 671093.67

Base Station - 22 182W
Northing (Y) 408053.25
Easting (X) 679287.00

All distances are shown in U.S. Survey Feet.
Ties are to 60D nails set in trees.
Bearings are for tie reference purposes only.
Coordinates were derived from RTK GNSS procedures.



● = LOCATION CORNER
Corner I.D. S 1/4 20
T 17 N R 2 W
Town of Adrian
Monroe County, WI.

21702200020

I, Lawrence A. Feddersen, do hereby certify that on the eighteenth day of November 19 93, I found (evidence) (no evidence) of the N¹/₄ corner of Section 29, T 17 N, R 2 W Fourth Principal Meridian, and I re-established said corner according to the Wisconsin Statutes as shown and described hereon.

Dated this 15th day of Dec. 19 93.

Lawrence A. Feddersen

Registered Land Surveyor
Title

History of corner establishment since Original Government Survey

No record of re-established corner.

Description of corner evidence found:

This North Quarter corner was established on line, equal distant from each Section corner. The U.S. Government owns all lands surrounding this corner. Ground in immediate area has been disturbed with large equipment.

COUNTY SURVEYOR FORM NO. 1

Description of corner and witness monuments, references and accessories used to perpetuate the original or re-established location of this corner:

11" dia. Black Oak

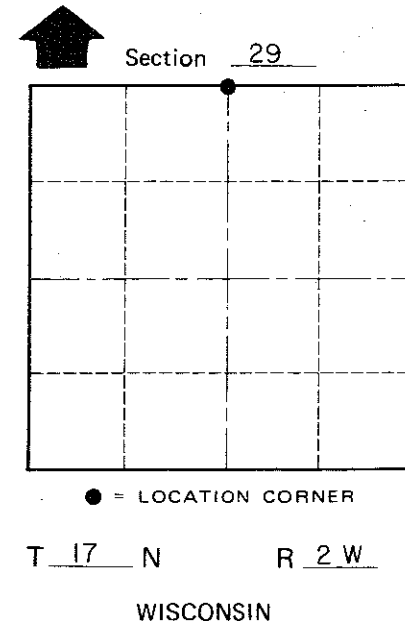
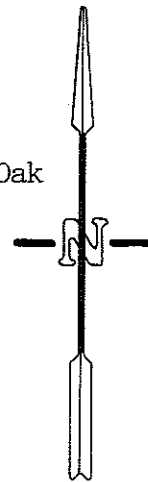
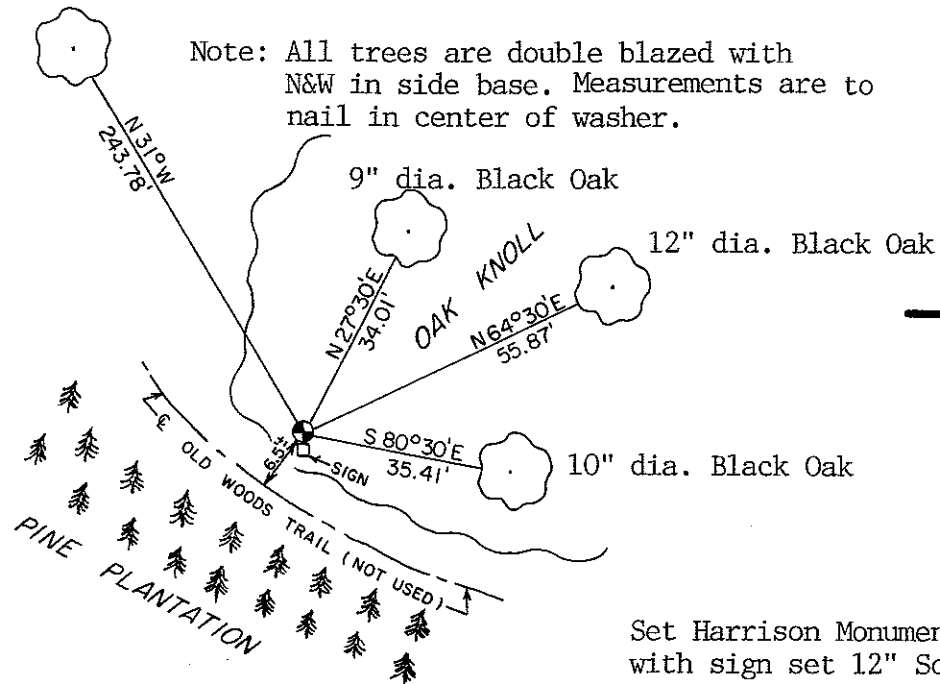
Note: All trees are double blazed with N&W in side base. Measurements are to nail in center of washer.

Witnesses to corner location:

Lawrence A. Feddersen

Timothy J. Jeatran

John Rulseh



Set Harrison Monument up 1" with sign set 12" South.

SURVEY CONTROL ORDER

Horizontal	_____
Vertical	_____

WISCONSIN COORDINATE SYSTEM

Corner	East (X)	North (Y)	Elevation (Z)	Zone
Control Sta. Name				

City, Village or Town of Adrian

County of Monroe