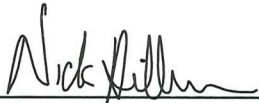


CERTIFICATE

I, Nicholas M. Hillmer, do hereby certify that this document and the data contained herein was prepared by me or under my direct supervision and that I am a duly Licensed Land Surveyor under the laws of the State of Wisconsin.

Dated this 23rd day of May, 2013



Nicholas M. Hillmer, P.L.S. 2909
Anderson Engineering of Minnesota, LLC.

CERTIFIED LAND CORNER

History of corner established since Original Government Survey

Fred Holden was here in April of 1907. Harley Sime was here in June of 1961. In 1980 Harley Sime set a Harrison monument by single proportion measurement.

Description of evidence found

On February 7, 2013, Anderson Engineering of Minnesota located the Harrison monument 0.3 foot below grade. The Harrison monument is 16 feet east of the centerline of Incline Road and 131 feet southeast of the intersection of County Highway A and Incline Road.

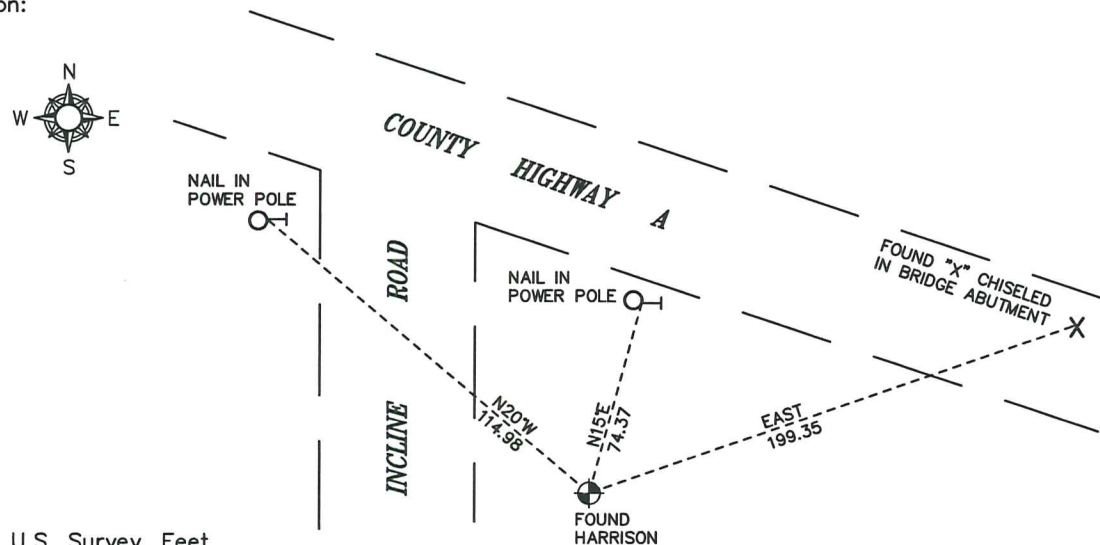
No. 21702190020



Description of corner and witness monuments, references and accessories used to perpetuate the original or re-established location of this corner:

Witnesses to corner location:

Nick Hillmer
Josh Oslund
Dan Greenwald

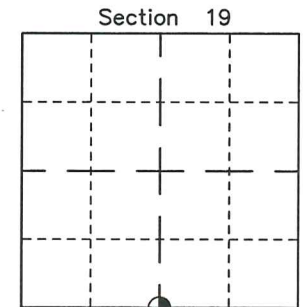


MONROE COUNTY
COORDINATE SYSTEM
NAD 1983 (2007)

HARRISON MONUMENT
Northing (Y) 373658.87
Easting (X) 665857.80

Base Station - 22 182W
Northing (Y) 408053.25
Easting (X) 679287.00

All distances are shown in U.S. Survey Feet.
Bearings are for tie reference purposes only.
Coordinates were derived from RTK GNSS procedures.



● = LOCATION CORNER
Corner I.D. S 1/4 19
T 17 N R 2 W
Town of Adrian
Monroe County, WI.

CERTIFICATE

CERTIFIED LAND CORNER

No. 92

21702190020

I, Harley A. Sime, do hereby certify that on the 29th day of September 1980, I found ~~(no evidence)~~ (no evidence) of the S¹/₄ corner of Section 19, T17 N, R2 W Fourth Principal Meridian, and I re-established said corner according to the Wisconsin Statutes as shown and described hereon.

Dated this 23rd day of Feb. 1981.

Harley A. Sime, R.L.S. 355

County Surveyor
Title

History of corner establishment since Original Government Survey

Fred Holden was here in April of 1907.
H. Sime was herein June of 1961.

Description of corner evidence found:

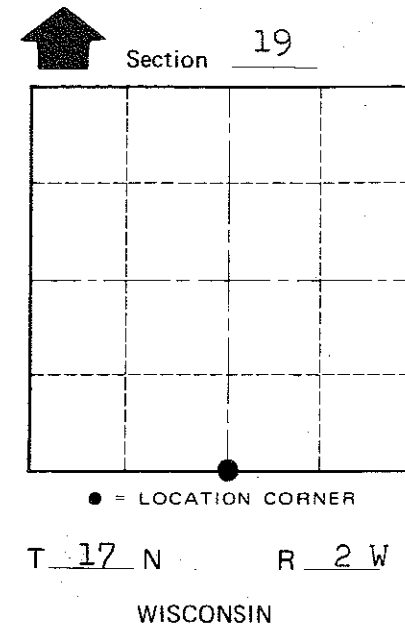
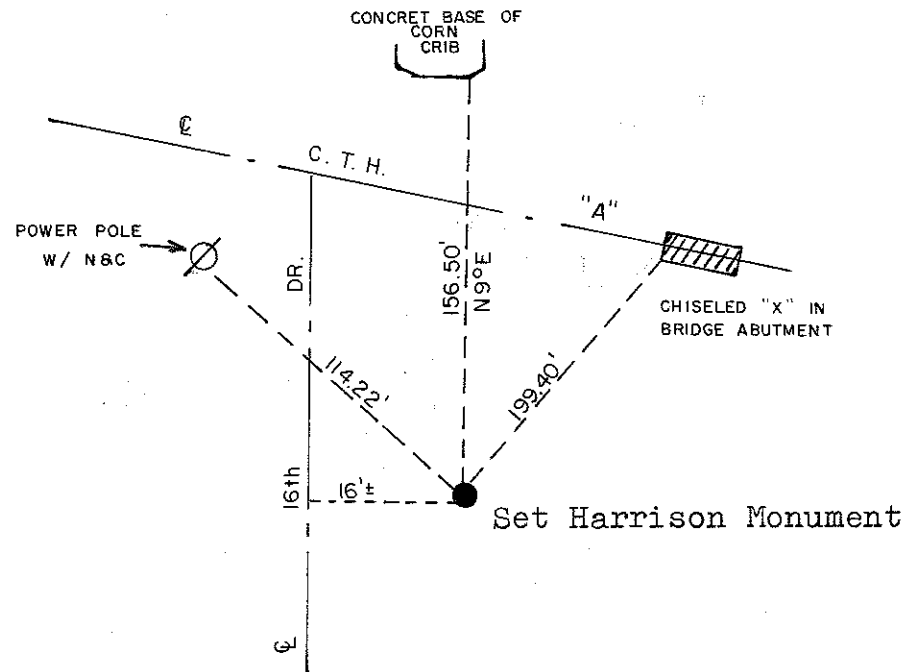
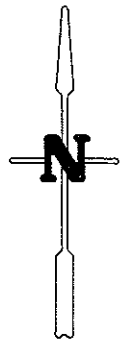
This corner was set by single proportionate measurement.

Description of corner and witness monuments, references and accessories used to perpetuate the original or re-established location of this corner:

Witnesses to corner location:

- G. Dechant
- B. Meyer
- M. Scott Sowers

COUNTY SURVEYOR FORM NO. 1



Approved: **HARLEY A. SIME**
MONROE CO. SURVEYOR

SURVEY CONTROL ORDER

Horizontal	_____
Vertical	_____

WISCONSIN COORDINATE SYSTEM

Corner	East (X)	North (Y)	Elevation (Z)	Zone
Control Sta. Name				

City, Village or Town Adrian

County of Monroe