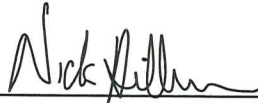


CERTIFICATE

I, Nicholas M. Hillmer, do hereby certify that this document and the data contained herein was prepared by me or under my direct supervision and that I am a duly Licensed Land Surveyor under the laws of the State of Wisconsin.

Dated this 23rd day of May, 2013



Nicholas M. Hillmer, P.L.S. 2909
Anderson Engineering of Minnesota, LLC.

CERTIFIED LAND CORNER

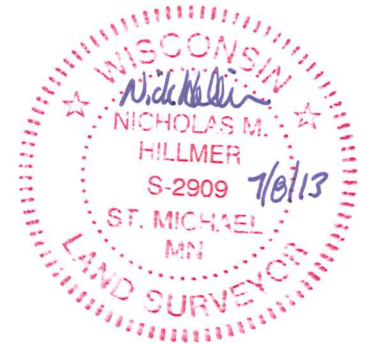
History of corner established since Original Government Survey

Lawrence A. Feddersen found wire from an old fence in the ground running north, south, and west. Feddersen set a Harrison monument at the intersection of the fence lines.

Description of evidence found

On February 26th, 2013, Anderson Engineering of Minnesota located the Harrison monument flush with the ground. The mark is 11 feet west of the centerline of a trail.

No. 21702180000



Description of corner and witness monuments, references and accessories used to perpetuate the original or re-established location of this corner:

Witnesses to corner location:

Nick Hillmer
Josh Oslund
Dan Greenwald

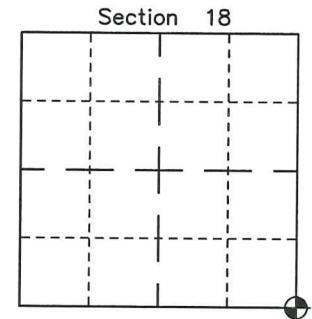
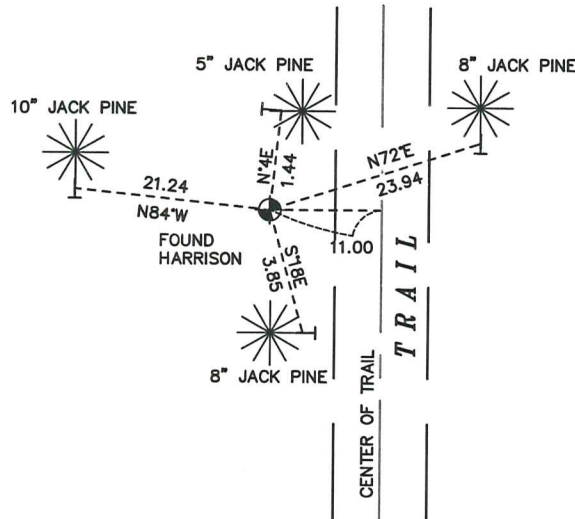


MONROE COUNTY
COORDINATE SYSTEM
NAD 1983 (2007)

HARRISON MONUMENT
Northing (Y) 378892.87
Easting (X) 668511.15

Base Station - 22 182W
Northing (Y) 408053.25
Easting (X) 679287.00

All distances are shown in U.S. Survey Feet.
Ties are to 60D nails set in trees.
Bearings are for tie reference purposes only.
Coordinates were derived from RTK GNSS procedures.



● = LOCATION CORNER
Corner I.D. SE 18
T 17 N R 2 W
Town of Adrian
Monroe County, WI.

CERTIFICATE

CERTIFIED LAND CORNER

No. 71

21702180000

I, Lawrence A. Feddersen, do hereby certify that on the 9 day of August 19 76, I found (evidence) (~~no evidence~~) of the Northeast corner of Section 19, T 17 N, R 2W Fourth Principal Meridian, and I re-established said corner according to the Wisconsin Statutes as shown and described hereon.

Dated this 31 day of August 19 81.

Lawrence A. Feddersen

Registered Land Surveyor

Title

History of corner establishment since Original Government Survey

None

Description of corner evidence found:

Found wire from old fence line in ground North, South and West. We placed Harrison at intersection of fence lines.

**Approved: HARLEY A. SIME
MONROE CO. SURVEYOR**

COUNTY SURVEYOR FORM NO. 1

Description of corner and witness monuments, references and accessories used to perpetuate the original or re-established location of this corner:

Witnesses to corner location:

Lawrence Feddersen

Thomas Mangene

Timothy Fisher

nail/washer in
blaze and painted
orange in jackred
pine

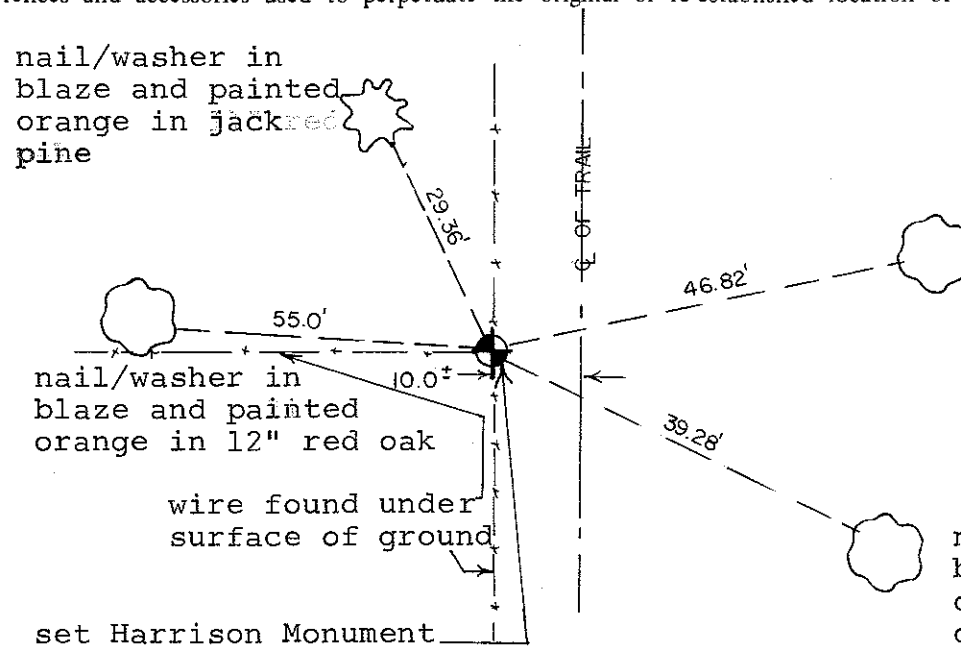
nail/washer in
blaze and painted
orange in 12" red oak

wire found under
surface of ground

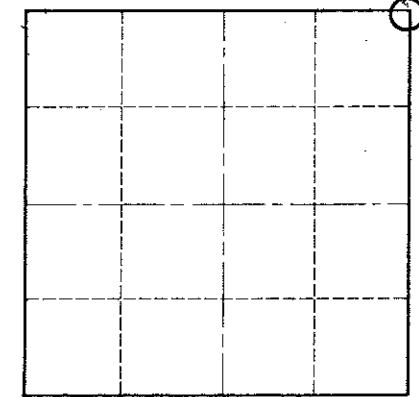
set Harrison Monument

nail/washer in
blaze and painted
orange in twin 11"
red oak

nail/washer in
blaze and painted
orange in 11" red
oak



Section 19



O = LOCATION CORNER

T 17 N R 2W

WISCONSIN

SURVEY CONTROL ORDER

Horizontal	_____
Vertical	_____

WISCONSIN COORDINATE SYSTEM

Corner	East (X)	North (Y)	Elevation (Z)	Zone
Control Sta. Name				

~~XXXXXX~~ Town of Adrian

County of Monroe