

57

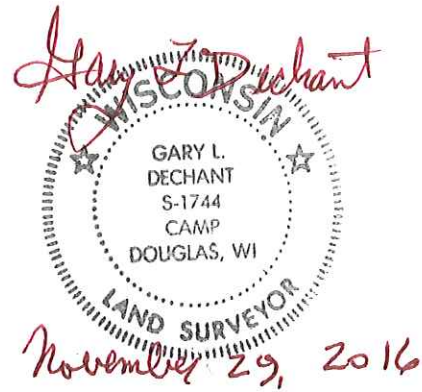
**U.S. PUBLIC LAND CORNER
MAINTENANCE**

**Corner ID : E1/4 Sec. 16, T17N-R2W
21702162000**

<u>DATE</u>	<u>CREW</u>	<u>MONUMENT TYPE -----</u>
October 21, 2016	Zachariah P.Dechant Gary L. Dechant	Existing Harrison intact, 32' south of Hazel Ave fence running south, 17 SW of concrete culvert Survey sign 1.5' south.

References:

	<u>Bearing</u>	<u>Distance</u>
1) Set 3/4"x24" round iron bar, down 6", 4' south of 4" Pin Oak	S70E	26.46'
2) Set 3/4"x24" round iron bar, down 6", 8' west of 18" Black Oak	S20E	45.00'
3) Set 3/4"x24" round iron bar, down 6", in fire lane	S38W	20.75'
4) Set 3/4"x24" round iron bar, down 6", 5' SE 18" Black Oak	N10W	66.61'



CERTIFICATE

I, Nicholas M. Hillmer, do hereby certify that this document and the data contained herein was prepared by me or under my direct supervision and that I am a duly Licensed Land Surveyor under the laws of the State of Wisconsin.

Dated this 21st day of May, 2013



Nicholas M. Hillmer, P.L.S. 2909
Anderson Engineering of Minnesota, LLC.

CERTIFIED LAND CORNER

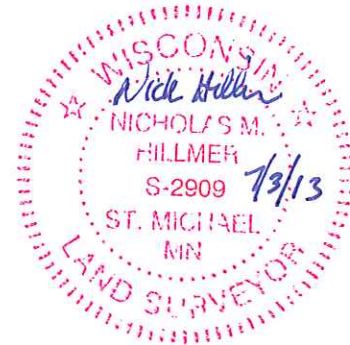
History of corner established since Original Government Survey

The McCoy boundary notes show a corner at this location. On August 9, 1977, Harley Sime, Darwin Dade, and Brian Meyer met a crew from Fort McCoy at the corner location. The McCoy crew was composed of Bob Mattison, back-hoe operator, and Robert Nichols from the base engineering department. They dug for the old concrete marker, but could not find it. The Harrison monument was set using the McCoy boundary field notes. The location was accepted by Robert Nichols.

Description of evidence found

On September 28th, 2012, Anderson Engineering of Minnesota located the Harrison monument 0.4 feet below grade and 0.8 feet north of a witness post with a survey marker sign. The monument is 32+/- feet south of the centerline of the road.

No. 57 P.2
21702162000



Description of corner and witness monuments, references and accessories used to perpetuate the original or re-established location of this corner:

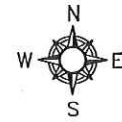
Witnesses to corner location:

Nick Hillmer
Josh Oslund
Dan Greenwald

MONROE COUNTY
COORDINATE SYSTEM
NAD 1983 (2007)

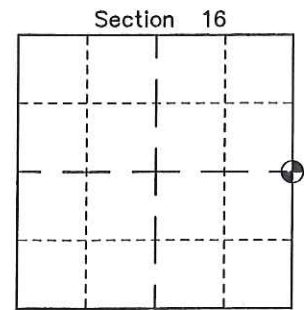
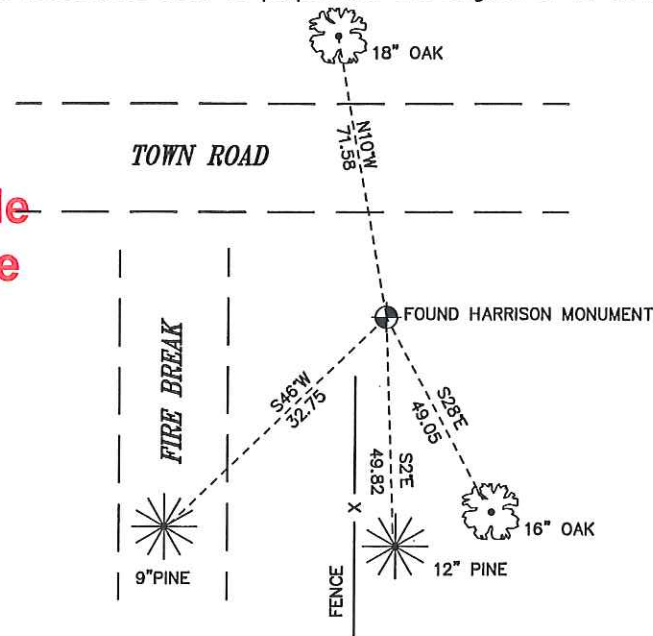
HARRISON MONUMENT
Northing (Y) 381528.51
Easting (X) 678854.12

Base Station - 22 182W
Northing (Y) 408053.25
Easting (X) 679287.00



All distances are shown in U.S. Survey Feet.
Ties are to 60D nails set in trees.
Bearings are for tie reference purposes only.
Coordinates were derived from RTK GNSS procedures.

**See Reverse Side
For Maintenance**



● = LOCATION CORNER
Corner I.D. E 1/4 16
T 17 N R 2 W
Town of Adrian
Monroe County, WI.

I, Harley A. Sime, do hereby certify that on the 15 day of August 1977, I found ~~(evidence)~~ (no evidence) of the W/4 corner of Section 15, T 17 N, R 2 W, Fourth Principal Meridian, and I re-established said corner according to the Wisconsin Statutes as shown and described hereon.

Dated this 24 day of August 1977.

County Surveyor

Title

History of original corner establishment:

A McCoy boundary marker was on record for this corner.

Description of corner evidence found:

On August 9, 1977, Harley Sime, Darwin Dade, and Brian Meyer met a crew from Fort McCoy at the corner location. The McCoy crew was composed of Bob Mattison, back-hoe operator, and Robert Nichols from the base engineering department. They dug for the old concrete marker, but could not find it. The Harrison marker was set using the old McCoy boundary field notes. The location was acceptable to Nichols.

Ties to this corner were taken by the below listed crew on August 15, 1977.

Description of corner and witness monuments, references and accessories used to perpetuate the original or re-established location of this corner:

Fd. Harrison marker, flush with ground. 6" Oak

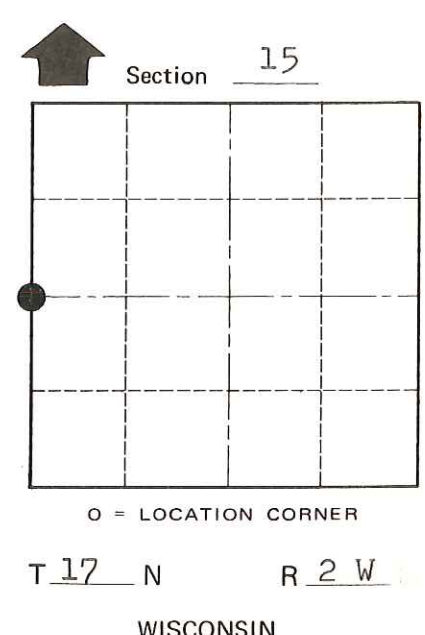
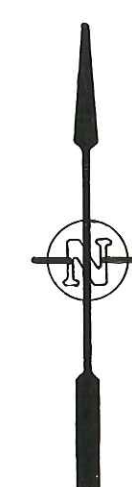
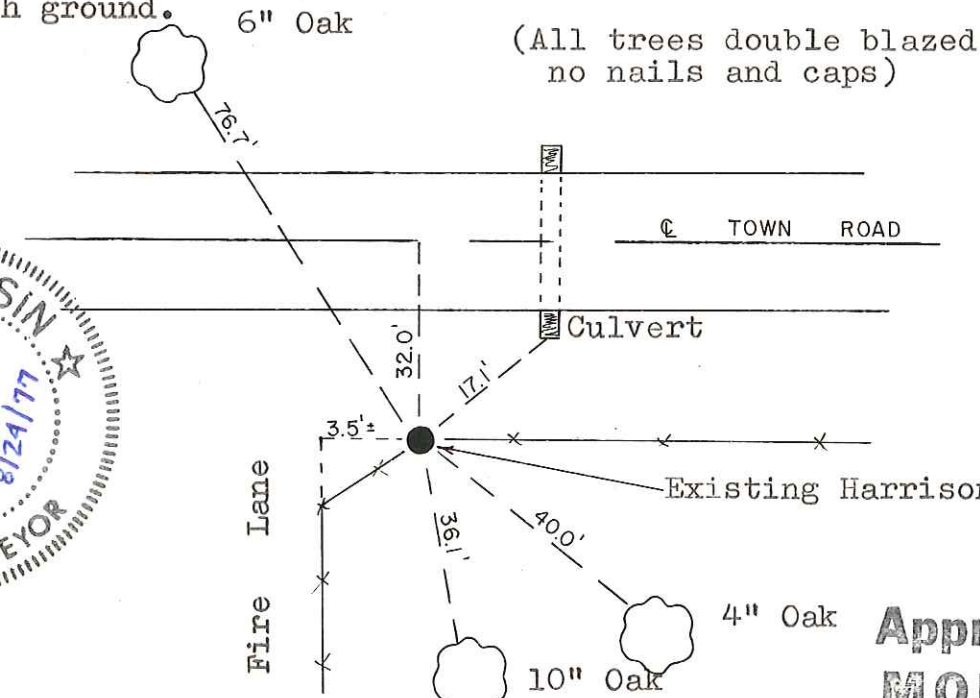
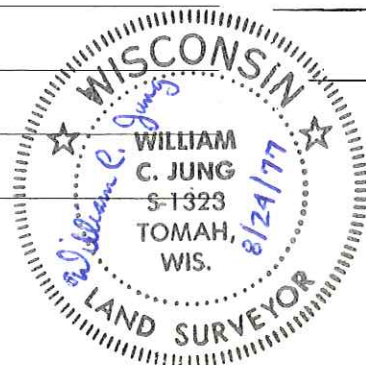
(All trees double blazed no nails and caps)

Witnesses to corner location:

W. Jung - Crew Chief

G. Dechant

B. Rasmussen



SURVEY CONTROL ORDER

Horizontal _____
Vertical _____

Corner	East (X)	North (Y)	Elevation (Z)	Zone
Control Sta. Name				

Approved: **HARLEY A. SIME**
MONROE CO. SURVEYOR

City, Village or Town Adrian

County of Monroe

**See Reverse Side
For Maintenance**

COUNTY SURVEYOR FORM NO. 1