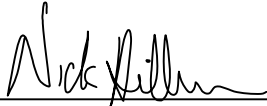


**CERTIFICATE**

I, Nicholas M. Hillmer, do hereby certify that this document and the data contained herein was prepared by me or under my direct supervision and that I am a duly Licensed Land Surveyor under the laws of the State of Wisconsin.

Dated this 21st day of May, 2013



Nicholas M. Hillmer, P.L.S. 2909  
Anderson Engineering of Minnesota, LLC.

**CERTIFIED LAND CORNER**

History of corner established since Original Government Survey

The 1940's McCoy boundary notes show a corner at this location.

Description of evidence found

On September 28th, 2012, Anderson Engineering of Minnesota located the McCoy monument, a 4 inch U.S. Army Corps of Engineers survey control mark disk set in concrete near the corners location. No recorded history of the monument being perpetuated or utilized in subsequent surveys. The monument was not accepted as the corner. On April 24th, 2013, Anderson Engineering of Minnesota set a 30 inch Berntsen aluminum dig monument with a 3 1/4 inch aluminum cap, stamped "FORT MCCOY BOUNDARY" "2013" "ANDERSON ENG. OF MN." The monument is set midway online between the west quarter corner and center of Section 15.

No. 21702152030

Description of corner and witness monuments, references and accessories used to perpetuate the original or re-established location of this corner:

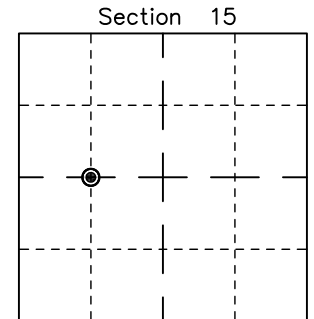
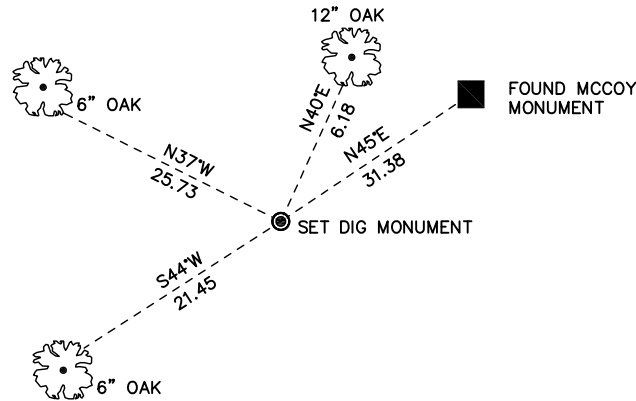
Witnesses to corner location:

Nick Hillmer  
Josh Oslund  
Dan Greenwald

MONROE COUNTY  
COORDINATE SYSTEM  
NAD 1983 (2007)

MCCOY DIG MONUMENT  
Northing (Y) 381547.00  
Easting (X) 680148.14

Base Station - 22 182W  
Northing (Y) 408053.25  
Easting (X) 679287.00



● = LOCATION CORNER  
Corner I.D. CW 1/16 15  
T 17 N R 2 W  
Town of Adrian  
Monroe County, WI.

All distances are shown in U.S. Survey Feet.  
Ties are to 60D nails set in trees.  
Bearings are for tie reference purposes only.  
Coordinates were derived from RTK GNSS procedures.

CERTIFICATE

CERTIFIED LAND CORNER

No. 57A

**21702152030**

I, Harley A. Sime, do hereby certify that on the 15 day of August 19 77, I found (evidence) (~~no evidence~~) of the SW Cor. - SE-NW corner of Section 15, T 17 N, R 2 W, Fourth Principal Meridian, and I re-established said corner according to the Wisconsin Statutes as shown and described hereon.

History of original corner establishment:

A McCoy boundary marker was on record for this corner.

Description of corner evidence found:

Found the old McCoy boundary marker. This corner is in my opinion not the true 1/8 corner however. This marker appears to be 22 feet  $\pm$  North, of the true corner.

Dated this 18 day of August 1977.

County Surveyor

Title

COUNTY SURVEYOR FORM NO. 1

Description of corner and witness monuments, references and accessories used to perpetuate the original or re-established location of this corner:

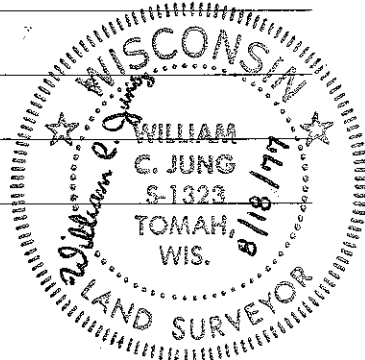
Fd. broken concrete marker.

Witnesses to corner location:

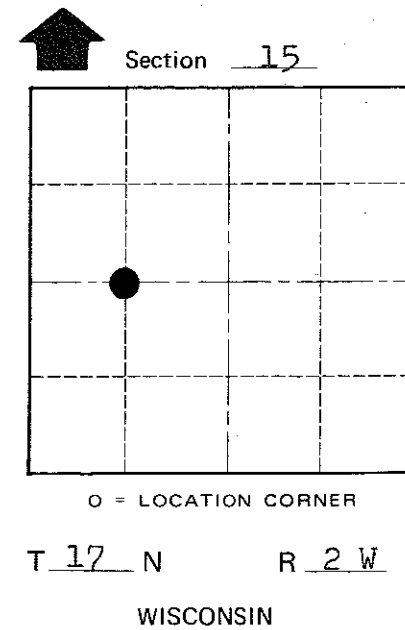
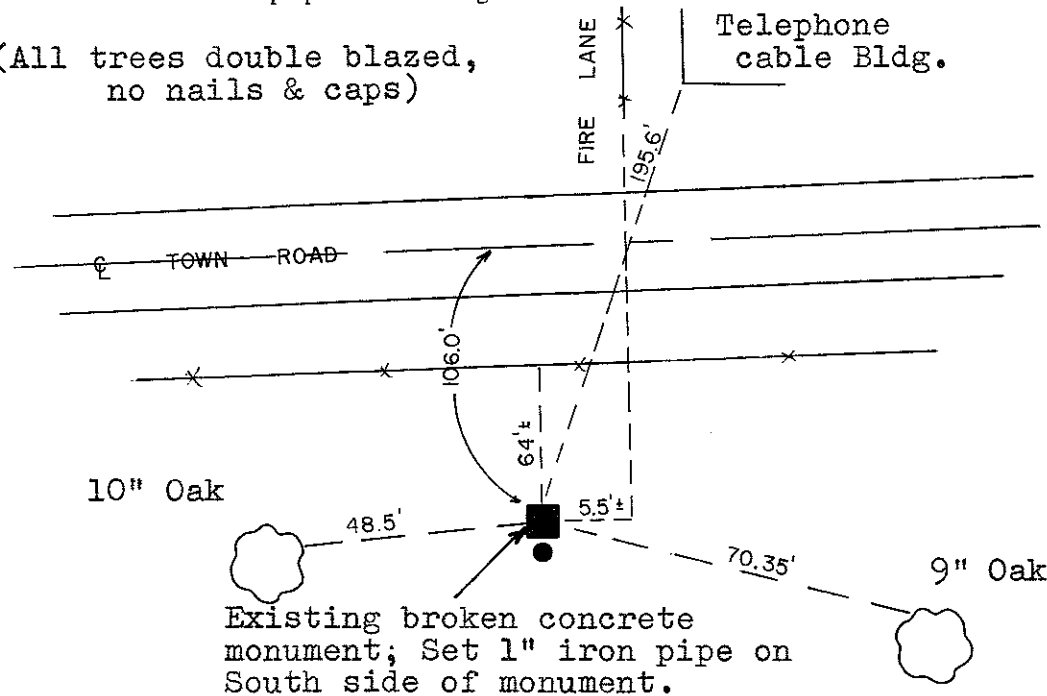
W. Jung - Crew Chief

G. Dechant

B. Rasmussen



(All trees double blazed, no nails & caps)



SURVEY CONTROL ORDER

Horizontal	_____
Vertical	_____

WISCONSIN COORDINATE SYSTEM

Corner	East (X)	North (Y)	Elevation (Z)	Zone
Control Sta. Name				

City, Village or Town Adrian

County of Monroe