

58

**U.S. PUBLIC LAND CORNER
MAINTENANCE**

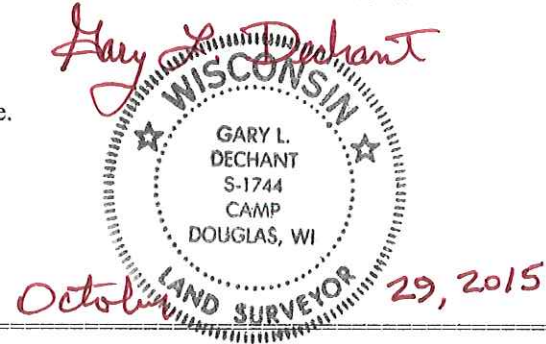
Corner ID : E1/4 Sec.15, T17N-R2W
21702152000

<u>DATE</u>	<u>CREW</u>	<u>MONUMENT TYPE</u> -----
September 4, 2015	Zachariah P. Dechant Gary L. Dechant	Existing Harrison intact, down 12" 11' west of Helium Road on line with fence to east.

References:

	<u>Bearing</u>	<u>Distance</u>
1) Set 3/4"x24" round iron bar, down 12" in pasture	N68E	52.62'
2) Set 3/4"x24" round iron bar, down 12" in field	S64E	56.68'
3) Set 3/4"x24" round iron bar, down 6", 3' SW of 8" Maple	S68W	23.87'
4) Set 3/4"x24" round iron bar, down, 6", 4' SE 16" White Oak	N64W	26.60'

Harrison & reference markers set on straight line.



**See Reverse Side
For Maintenance**

CERTIFICATE

I, Nicholas M. Hillmer, do hereby certify that this document and the data contained herein was prepared by me or under my direct supervision and that I am a duly Licensed Land Surveyor under the laws of the State of Wisconsin.

Dated this 23rd day of May, 2013



Nicholas M. Hillmer, P.L.S. 2909
Anderson Engineering of Minnesota, LLC.

CERTIFIED LAND CORNER

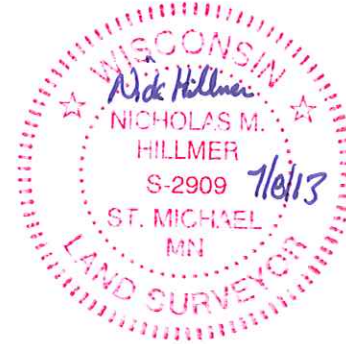
History of corner established since Original Government Survey

In August of 1977 Harley A. Sime traversed parts of Sections 14 and 15 and set the corner by best available evidence after studying field data, original government notes, and aerial photos. Sime found no evidence of original bearing trees or the original stake and set a Harrison monument down 8 inches along the west side of the road.

Description of evidence found

On February 21, 2013, Anderson Engineering of Minnesota located the Harrison monument 1 foot below the road at the edge of bituminous.

No. 58
21702152000



Description of corner and witness monuments, references and accessories used to perpetuate the original or re-established location of this corner:

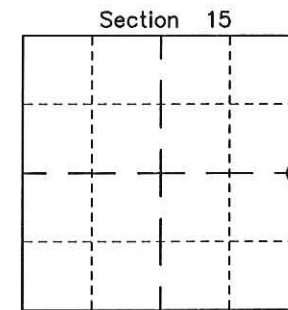
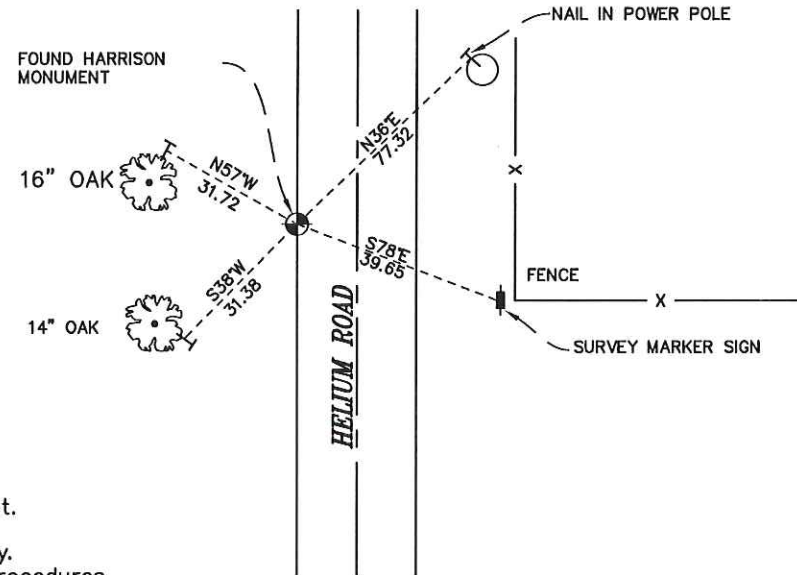
Witnesses to corner location:

Nick Hillmer
Dan Greenwald

MONROE COUNTY
COORDINATE SYSTEM
NAD 1983 (2007)

HARRISON MONUMENT
Northing (Y) 381602.65
Easting (X) 684042.66

Base Station - 22 182W
Northing (Y) 408053.25
Easting (X) 679287.00



⊙ = LOCATION CORNER
Corner I.D. E 1/4 15
T 17 N R 2 W
Town of Adrian
Monroe County, WI.

All distances are shown in U.S. Survey Feet.
Ties are to 60D nails set in trees.
Bearings are for tie reference purposes only.
Coordinates were derived from RTK GNSS procedures.

I, Harley A. Sime, do hereby certify that on the 23 day of August 1977, I found (evidence) (no evidence) of the E 1/4 corner of Section 15, T 17 N, R 2 W, Fourth Principal Meridian, and I re-established said corner according to the Wisconsin Statutes as shown and described hereon.

History of original corner establishment:

Approved: HARLEY A. SIME
MONROE CO. SURVEYOR

See Reverse Side
For Maintenance

Dated this 24 day of August 1977.

Description of corner evidence found:
 Traversed parts of Sections 14 and 15. Set corner by best available evidence after studying field data, original government notes, and aerial photos. Found no evidence of original bearing trees or original stake. Dug a 2'x4'x2' deep trench while searching.

County Surveyor

Title

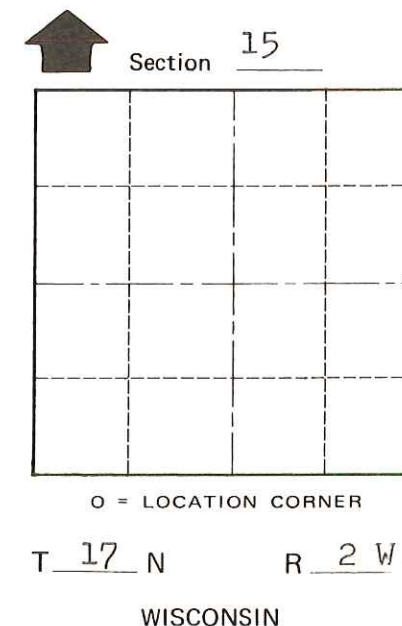
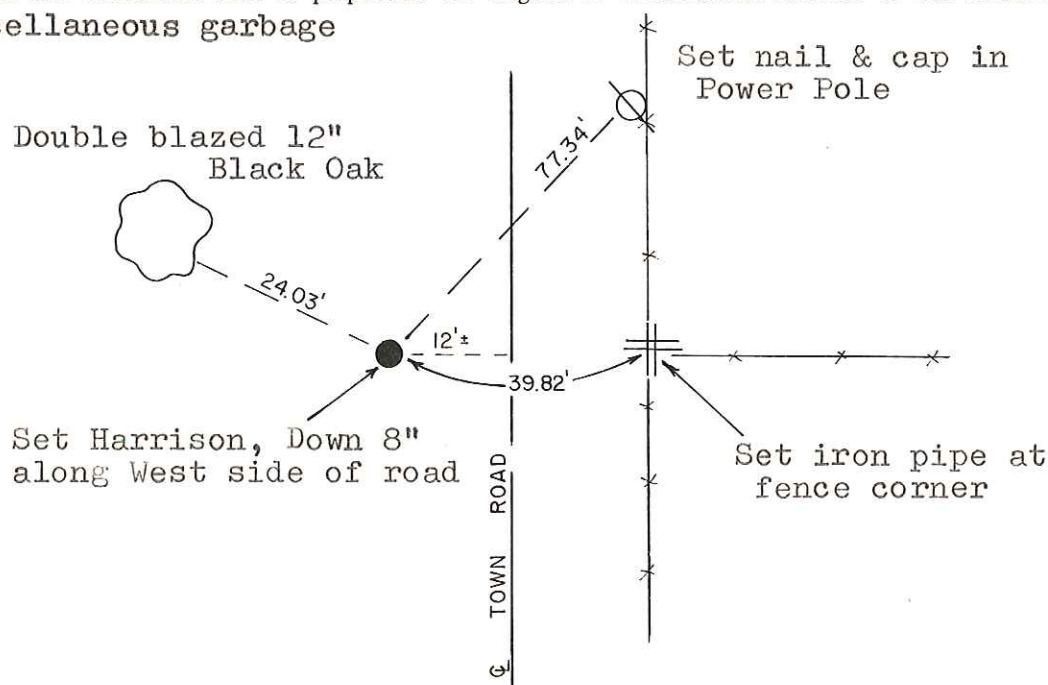
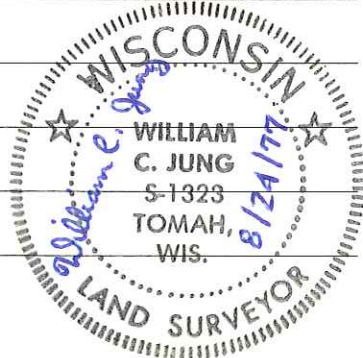
Description of corner and witness monuments, references and accessories used to perpetuate the original or re-established location of this corner:

Set Harrison marker. Buried miscellaneous garbage in the trench with the marker.

Witnesses to corner location:

W. Jung - Crew Chief

G. Dechant



SURVEY CONTROL ORDER

Horizontal	_____
Vertical	_____

WISCONSIN COORDINATE SYSTEM

Corner	East (X)	North (Y)	Elevation (Z)	Zone
Control Sta. Name				

City, Village or Town Adrian

County of Monroe

COUNTY SURVEYOR FORM NO. 1