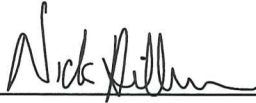


## CERTIFICATE

I, Nicholas M. Hillmer, do hereby certify that this document and the data contained herein was prepared by me or under my direct supervision and that I am a duly Licensed Land Surveyor under the laws of the State of Wisconsin.

Dated this 23rd day of May, 2013



Nicholas M. Hillmer, P.L.S. 2909  
Anderson Engineering of Minnesota, LLC.

## CERTIFIED LAND CORNER

### History of corner established since Original Government Survey

In 1992 Gary L. Dechant first reestablished the NW corner of the NE1/4-NE1/4 by projecting the line westward 11 rods from the occupied NE corner of the exception, described in Volume 14 R., Page 18, from the NE1/4-NE1/4 of Section 22. The North 1/4 was then reset at a doubled distance and online with this computed forty corner and the northeast corner of the Section. Dechant stated the location fit other field evidence well and set a TCP monument down below plow depth.

### Description of evidence found

On March 14th, 2013, Anderson Engineering of Minnesota located the TCP monument with the top broken off 1.5 feet below grade.

No. 21702150020



Description of corner and witness monuments, references and accessories used to perpetuate the original or re-established location of this corner:

Witnesses to corner location:

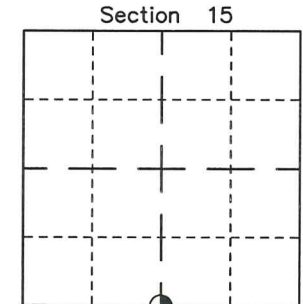
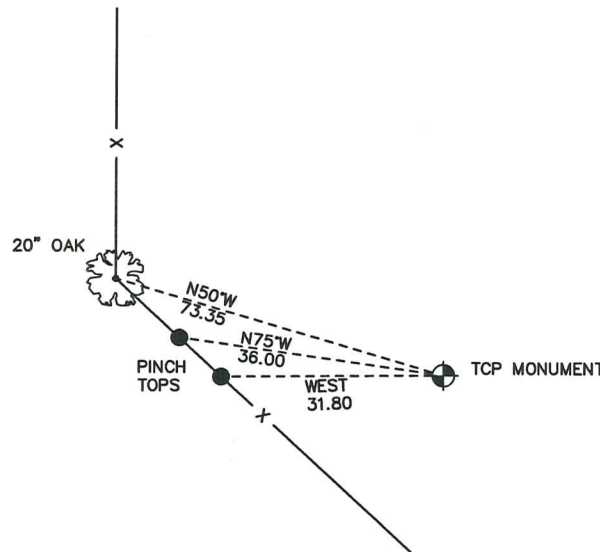
Nick Hillmer  
Josh Oslund  
Dan Greenwald



MONROE COUNTY  
COORDINATE SYSTEM  
NAD 1983 (2007)

TCP MONUMENT  
Northing (Y) 378941.88  
Easting (X) 681475.40

Base Station - 22 182W  
Northing (Y) 408053.25  
Easting (X) 679287.00



⊙ = LOCATION CORNER  
Corner I.D. S 1/4 15  
T 17 N R 2 W  
Town of Adrian  
Monroe County, WI.

All distances are shown in U.S. Survey Feet.  
Ties are to 60D nails set in trees.  
Bearings are for tie reference purposes only.  
Coordinates were derived from RTK GNSS procedures.

CERTIFICATE

CERTIFIED LAND CORNER

No. 66

21702150020

I, Gary L. Dechant, do hereby certify that on the 1st day of June 19 92, I found ~~(evidence)~~ (no evidence) of the N<sup>1</sup>/<sub>4</sub> corner of Section 22, T 17 N, R 2W Fourth Principal Meridian, and I re-established said corner according to the Wisconsin Statutes as shown and described hereon.

History of corner establishment since Original Government Survey

No known recorded history since the original government survey.

Description of corner evidence found:

First, the NW corner of the NE<sup>1</sup>/<sub>4</sub>-NE<sup>1</sup>/<sub>4</sub> was re-established by projecting the line westward, 11 rods (181.50 feet), from the occupied NE corner of the exception, described in Vol. 14 R., P. 18, from the NE<sup>1</sup>/<sub>4</sub>-NE<sup>1</sup>/<sub>4</sub> of Sec. 22.

The N<sup>1</sup>/<sub>4</sub> corner was then, reset at a doubled distance and on line with this computed forty corner and the NE corner of the Section. This fits other field evidence well.

Dated this 9th day of June 1992.

Gary L. Dechant

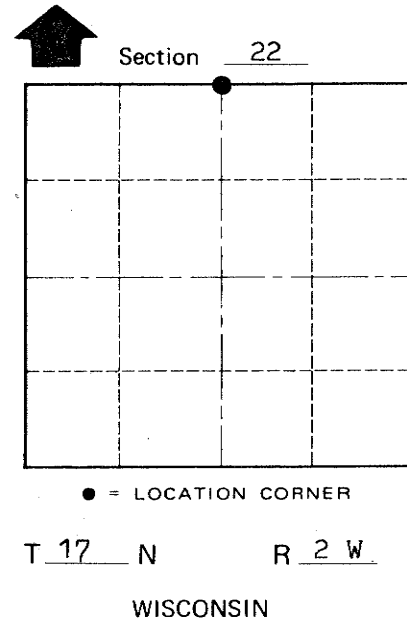
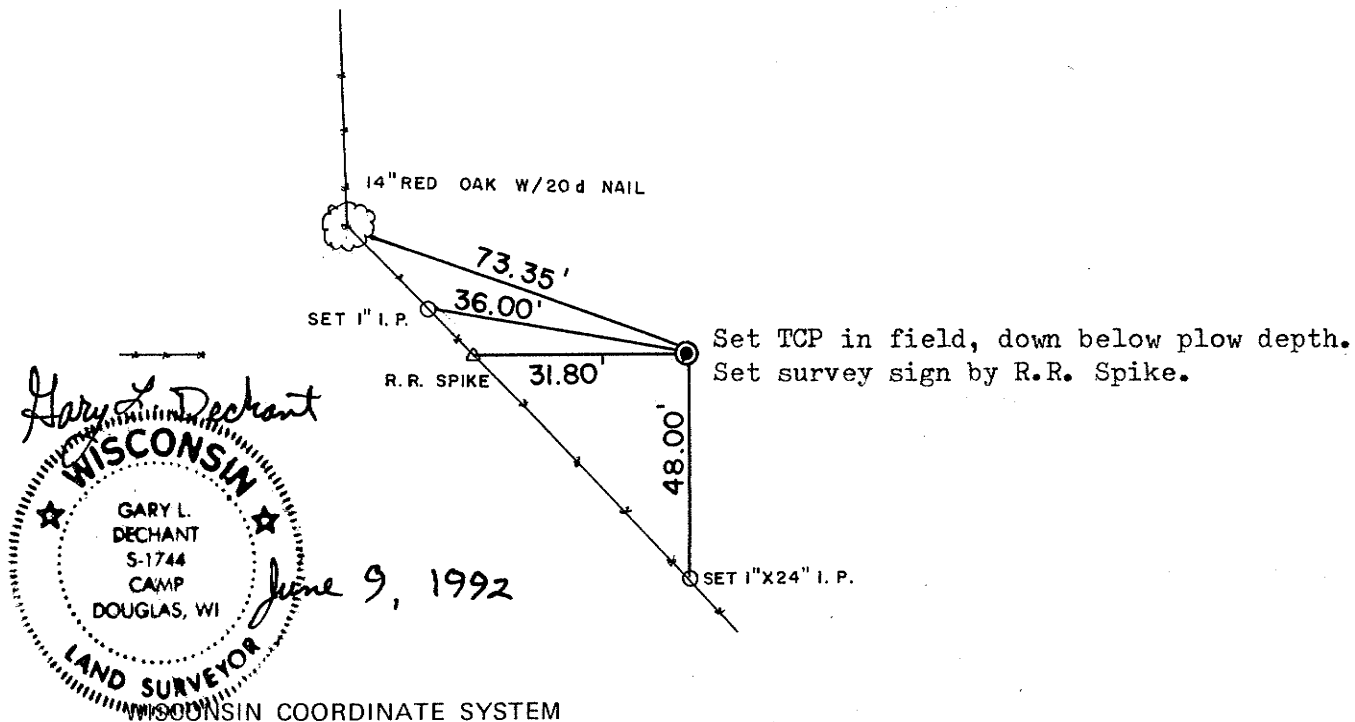
Reg. Land Surveyor, S-1744  
Title

Description of corner and witness monuments, references and accessories used to perpetuate the original or re-established location of this corner:

Witnesses to corner location:

David E. Madison

Gary L. Dechant



COUNTY SURVEYOR FORM NO. 1

SURVEY CONTROL ORDER

Horizontal	_____
Vertical	_____

Corner	East (X)	North (Y)	Elevation (Z)	Zone
Control Sta. Name				

~~City, Village or~~ Town Adrian  
County of Monroe