

59

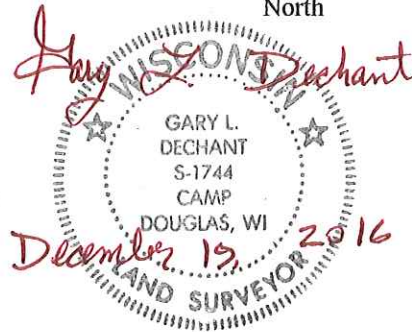
**U.S. PUBLIC LAND CORNER
MAINTENANCE**

**Corner ID : E1/4 Sec. 14, T17N-R2W
21702142000**

<u>DATE</u>	<u>CREW</u>	<u>MONUMENT TYPE</u> -----
October 21, 2016	Zachariah P. Dechant Gary L. Dechant	Existing 1" Axle shaft, down 18" 14' south of Hazel Ave/Hawthorn Road inter.

References:

	<u>Bearing</u>	<u>Distance</u>
1) Set 3/4" x24" round iron bar, flush, in lawn	N38E	78.22'
2) Set 3/4" x24" round iron bar, down 12" in field	S44E	61.81'
3) Set 3/4" x24" round iron bar, flush, 5' east of large boulder with flag pole	S38W	57.09'
4) Set 3/4" x24" round iron bar, down 10" edge of field	N44W	77.41'
5) Existing torque tube, up 10", leaning slightly south	North	49.40' (49.53')



Harrison & reference markers set on straight lines.

I, Harley A. Sime, do hereby certify that on the 18th day of November 1975, I found (evidence) (~~no evidence~~) of the West 1/4 corner of Section 13, T 17 N, R 2 W Fourth Principal Meridian, and I re-established said corner according to the Wisconsin Statutes as shown and described hereon.

Dated this 28th of March 1977.

History of original corner establishment:

**See Reverse Side
For Maintenance**

Description of corner evidence found:

**Found auto axle set by Ray Hurlburt in September 1940.
Revisited this corner on April 22, 1976. Also found USGS monument.**

County Surveyor **Approved: HARLEY A. SIME**
Title **MONROE CO. SURVEYOR**

Description of corner and witness monuments, references and accessories used to perpetuate the original or re-established location of this corner:

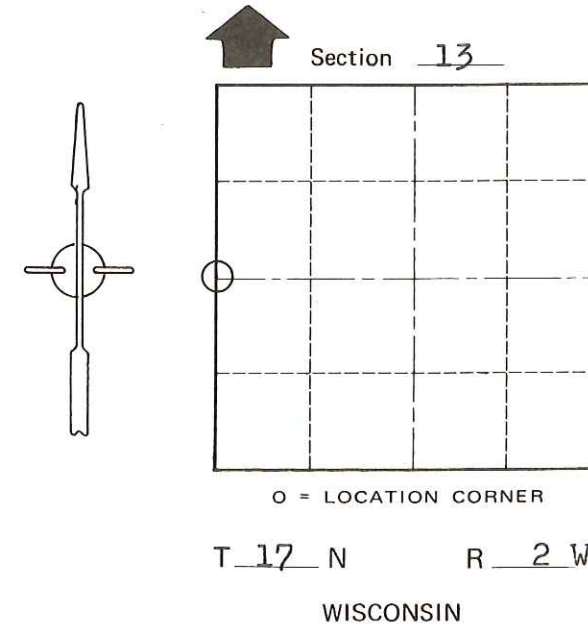
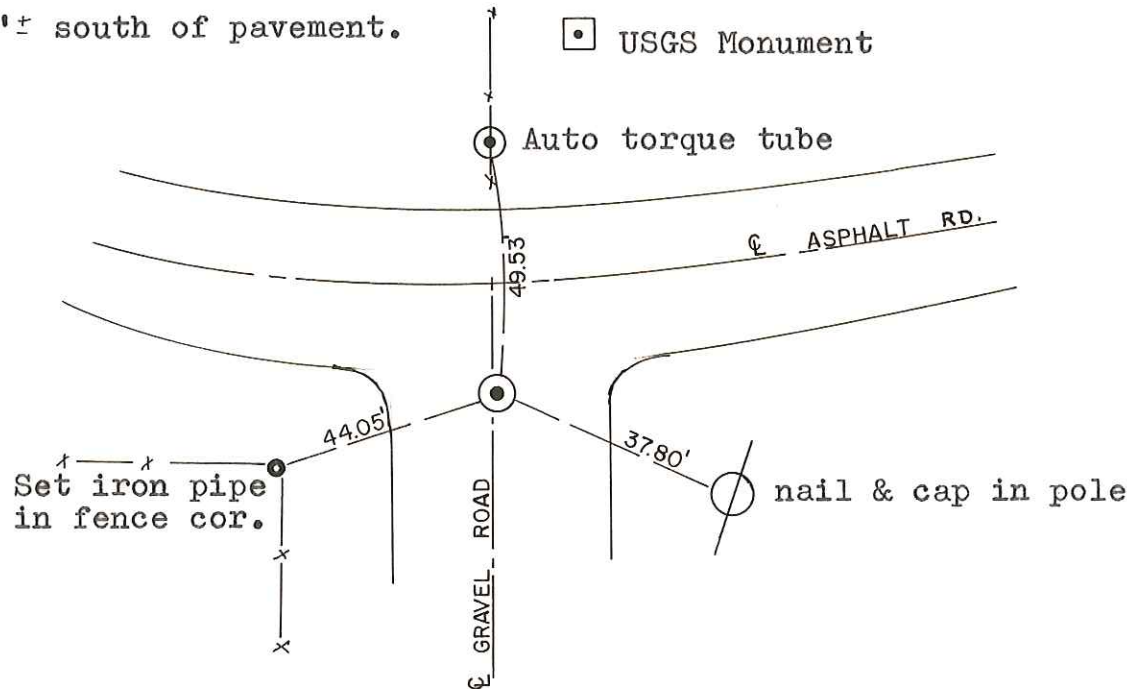
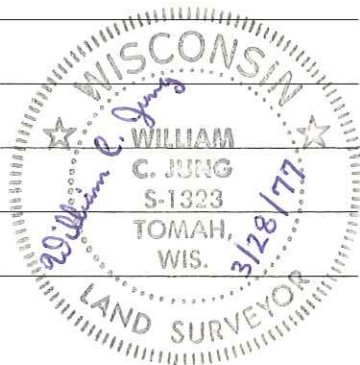
Found auto axle, down 1.2' and 6'± south of pavement.

Witnesses to corner location:

Jung

Malliet

Lueck



SURVEY CONTROL ORDER

Horizontal	_____
Vertical	_____

WISCONSIN COORDINATE SYSTEM

Corner	East (X)	North (Y)	Elevation (Z)	Zone
Control Sta. Name				

City, Village or Town Adrian

County of Monroe

COUNTY SURVEYOR FORM NO. 1