

21702140020

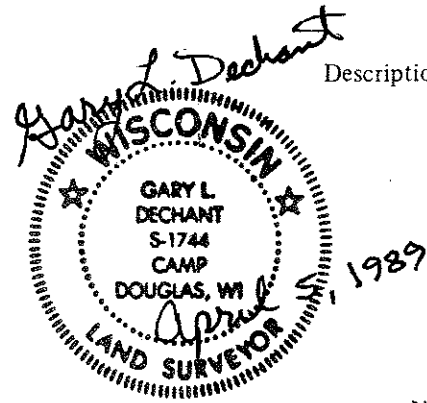
I, Gary L. Dechant, do hereby certify that on the 5th day of April 1989, I found (evidence) ~~XXXXXXXX~~ of the NW corner of Section 23, T 17 N, R 2 W Fourth Principal Meridian, and I re-established said corner according to the Wisconsin Statutes as shown and described hereon.

Dated this 5th day of April 1989. Gary L. Dechant Registered Land Surveyor, S-1744 Title

History of corner establishment since Original Government Survey

Dept. of Transportation refers to this corner on I-90 r/w map dated March 8, 1965.

Description of corner evidence found:



Accepted projected fences from North, South, and East as the corner. This fits highway r/w maps and deeds very well. Also, the forty corner to the East, set on line and half way between government corners, fits remnants of forty fence corner within 2±.

Description of corner and witness monuments, references and accessories used to perpetuate the original or re-established location of this corner:

Witnesses to corner location:

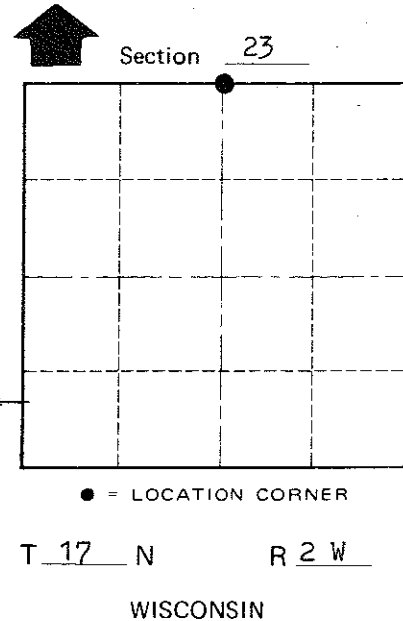
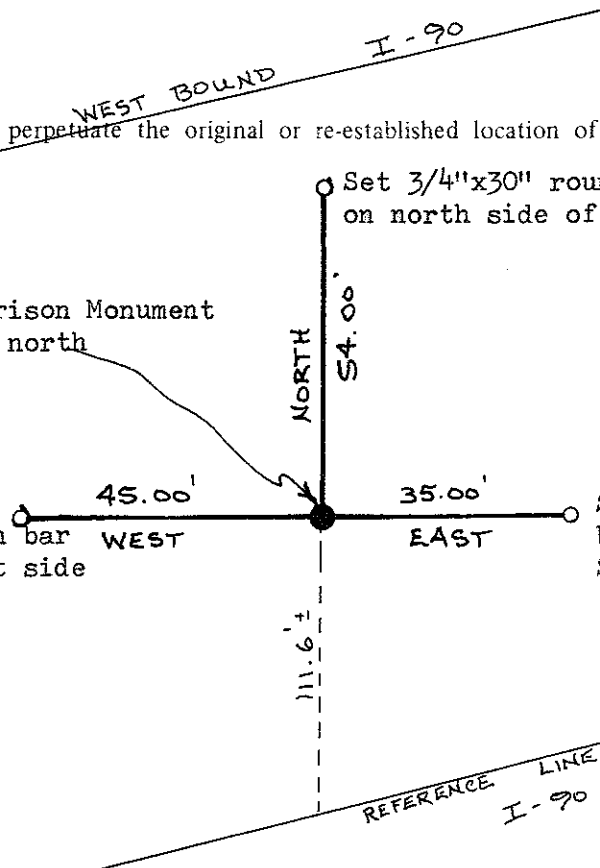
Gary L. Dechant

Set cast iron Harrison Monument set survey sign 1' north of corner

Set 3/4"x24" round iron bar at top of slope on west side of plateau.

Set 3/4"x30" round iron bar at top of slope on north side of plateau.

Set 3/4"x24" round iron bar at top of slope on southerly edge of plateau.



COUNTY SURVEYOR FORM NO. 1

SURVEY CONTROL ORDER

Horizontal _____ Vertical _____

WISCONSIN COORDINATE SYSTEM

Table with columns: Corner, Control Sta. Name, East (X), North (Y), Elevation (Z), Zone

Town Adrian County of Monroe