

# U.S. LAND CORNER MAINTENANCE

Corner ID : SE Sec.14, T17N-R2W  
21702140000

<u>DATE</u>	<u>CREW</u>	<u>MONUMENT TYPE</u> -----
May 12, 2011	Zachariah P. Dechant Gary L. Dechant	Reset destroyed corner with cast iron TCP with 6' anchor in concrete on north side of dike of pond. Set survey sign 1' East. Reset from previous surveys of record.


References:

Set ½"x18" iron rod with flange near top  
Set ½"x18" iron rod with flange near top

Bearing  
S80W  
S20W

Distance  
26.90'  
32.49'

*Gary L. Dechant*



*July 26, 2013*

CERTIFICATE

CERTIFIED LAND CORNER

No. 63

**21702140000**

I, Harley A. Sime, do hereby certify that on the 21 day of November 1975, I found ~~(evidence)~~ (no evidence) of the Northwest corner of Section 24, T. 17 N, R. 2 W, Fourth Principal Meridian, and I re-established said corner according to the Wisconsin Statutes as shown and described hereon.

Dated this 29th day of March 1977.

County Surveyor

Title

History of original corner establishment:

**Approved: HARLEY A. SIME  
MONROE CO. SURVEYOR**

Description of corner evidence found:

Hurlburt was at this corner in 1940, but set no monument. We set a survey point in the road at the W 1/16-NW 1/4 and in the road at the W 1/4 corner. These fit almost perfectly for north-south alignment with the north-south fence at the NW corner. The distance from the W 1/16-NW 1/4 to the W 1/4 corner agrees within 3' of Dahl's distance of 1868. Doubled this distance and set NW corner in north-south fence. This fits the west line of the NW 1/4 perfectly. No evidence of bearing trees.

Description of corner and witness monuments, references and accessories used to perpetuate the original or re-established location of this corner:

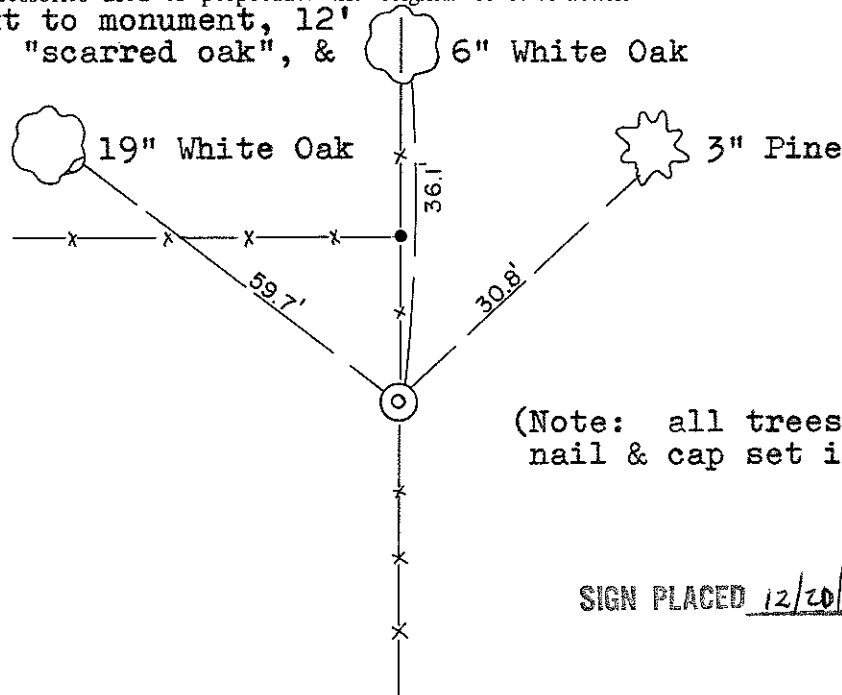
Set Harrison, upl", set steel post next to monument, 12' south of what appears to be Hurlburt's "scarred oak", & 12' south of westerly fence.

Witnesses to corner location:

Jung

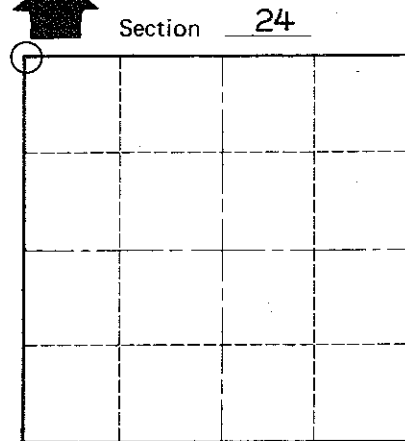
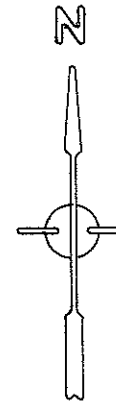
Malliet

Lueck



(Note: all trees blazed & nail & cap set in them)

SIGN PLACED 12/20/90 g.l.

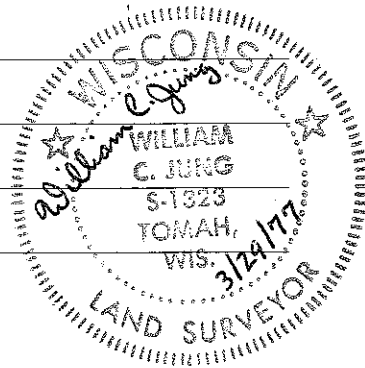


O = LOCATION CORNER

T 17 N R 2 W

WISCONSIN

COUNTY SURVEYOR FORM NO. 1.



SURVEY CONTROL ORDER

Horizontal	_____
Vertical	_____

WISCONSIN COORDINATE SYSTEM

Corner	East (X)	North (Y)	Elevation (Z)	Zone
Control Sta. Name				

City, Village or Town Adrian

County of Monroe