

34

**U.S. PUBLIC LAND CORNER
MAINTENANCE**

Corner ID : W1/4 Sec.7, T17N-R1W

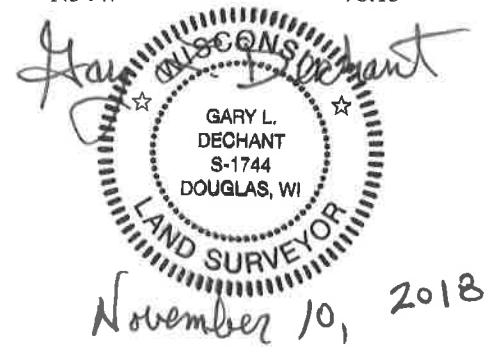
21702122000

DATE	CREW	MONUMENT TYPE -----
November 1, 2018	Zachariah P. Dechant Gary L. Dechant	Existing 1-1/8" round iron bar, flush in center of Glider Ave & CTH "M" intersection

References:

	<u>Bearing</u>	<u>Distance</u>
1) Set 3/4"x24" round iron bar, down 12" in field	N47E	64.96'
2) Existing 3/4" round iron bar, down 12" in field entrance, (1998 tie)	S54E	30.21'
3) Set 3/4"x24" round iron bar, down 12" in field	S47W	57.89'
4) Set 3/4"x24" round iron bar, down 12" in field	N54W	78.13'

Harrison & reference markers set on straight lines.



I, William C. Jung, do hereby certify that on the 25th day of September 1979, I found (evidence) ~~(no evidence)~~ of the West 1/4 corner of Section 7, T 17 N, R 1 W Fourth Principal Meridian, and I re-established said corner according to the Wisconsin Statutes as shown and described hereon.

Dated this 30th day of Dec. 1980.

William C. Jung

William C. Jung

Title
R.L.S. 1323

History of corner establishment since Original Government Survey

H. A. Sime was here in April of 1970 and set a nail. In his survey of June, 1971, Duane Marten shows a 3/4" iron bar at this corner.

Description of corner evidence found:

Found a 3/4" iron bar. Removed and set a Harrison Marker, flush with pavement. Accepted the corner at the occupied corner as the best available evidence of the original government survey.

See Reverse Side For Maintenance

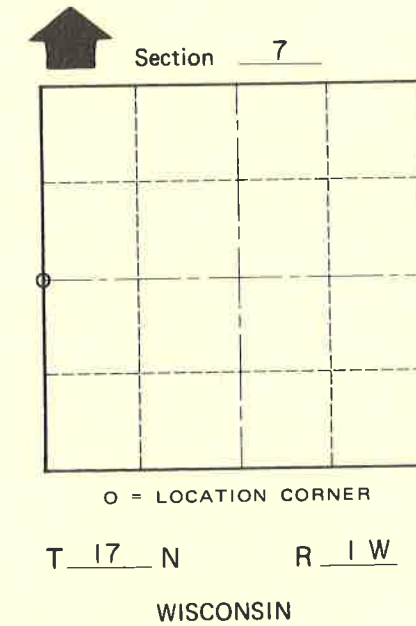
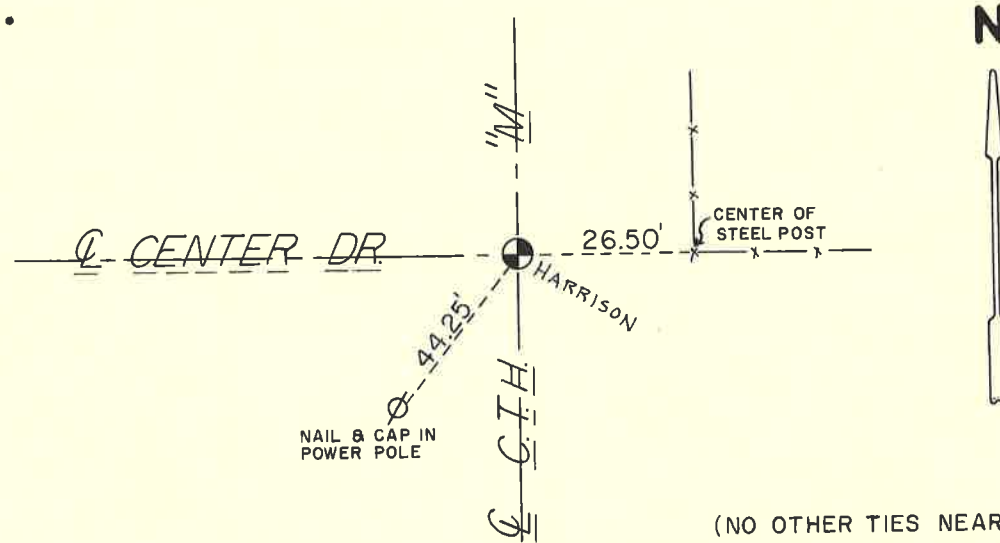
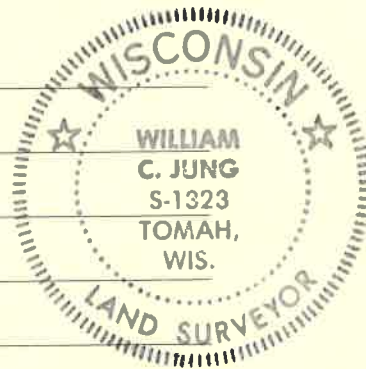
Description of corner and witness monuments, references and accessories used to perpetuate the original or re-established location of this corner:

Found 3/4" Iron Bar. Removed and set a Harrison Monument, flush with pavement.

Witnesses to corner location:

Jung

Tormoen



**Approved: HARLEY A. SIME
MONROE CO. SURVEYOR**

SURVEY CONTROL ORDER

Horizontal	_____
Vertical	_____

WISCONSIN COORDINATE SYSTEM

Corner	East (X)	North (Y)	Elevation (Z)	Zone
Control Sta. Name				

_____ or Town Tomah
County of Monroe

COUNTY SURVEYOR FORM NO. 1