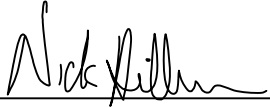


# CERTIFICATE

I, Nicholas M. Hillmer, do hereby certify that this document and the data contained herein was prepared by me or under my direct supervision and that I am a duly Licensed Land Surveyor under the laws of the State of Wisconsin.

Dated this 23rd day of May, 2013



Nicholas M. Hillmer, P.L.S. 2909  
Anderson Engineering of Minnesota, LLC.

# CERTIFIED LAND CORNER

## History of corner established since Original Government Survey

In 1973 Harley A. Sime found an auto axle set by Hurlburt in 1940. Sime also found an auto steering post 10 links south and up 1 foot near a fence. Sime accepted Hurlburt's monument and set a 1 inch axle shaft at it's location. Bryan Meyer located Sime's monument in good condition at the south edge of the blacktop in May of 1995.

## Description of evidence found

On September 26th, 2012, Anderson Engineering of Minnesota located the 1 inch axle shaft on the south edge of bit 1 1/2 inches below grade.

No. 21702030000

Description of corner and witness monuments, references and accessories used to perpetuate the original or re-established location of this corner:

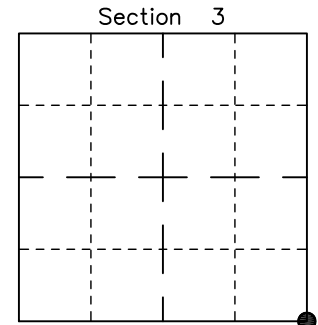
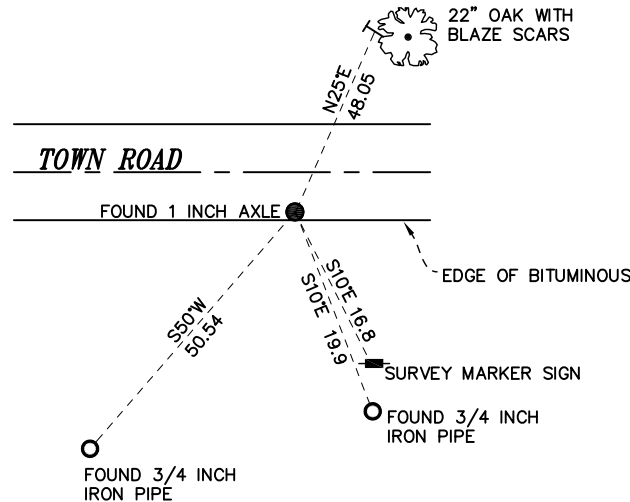
Witnesses to corner location:

Nick Hillmer  
Josh Oslund  
Dan Greenwald

MONROE COUNTY  
COORDINATE SYSTEM  
NAD 1983 (2007)

1 INCH AXLE SHAFT  
Northing (Y) 389501.92  
Easting (X) 683970.32

Base Station - 22 182W  
Northing (Y) 408053.25  
Easting (X) 679287.00



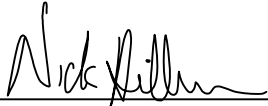
● = LOCATION CORNER  
Corner I.D. SE 3  
T 17 N R 2 W  
Town of Adrian  
Monroe County, WI.

All distances are shown in U.S. Survey Feet.  
Bearings are for tie reference purposes only.  
Coordinates were derived from RTK GNSS procedures.

# CERTIFICATE

I, Nicholas M. Hillmer, do hereby certify that this document and the data contained herein was prepared by me or under my direct supervision and that I am a duly Licensed Land Surveyor under the laws of the State of Wisconsin.

Dated this 23rd day of May, 2013



Nicholas M. Hillmer, P.L.S. 2909  
Anderson Engineering of Minnesota, LLC.

# CERTIFIED LAND CORNER

## History of corner established since Original Government Survey

Webster Kenyon was here in December of 1886. The Fort McCoy notes indicate that someone from the Government agency was here sometime in the 1940's. In July of 1997 Bryan Meyer found no physical evidence of the corner. Meyer re-established the corner by placing a True Cast Products monument on line and two-thirds of the way between the the northeast corner and N1/16NW corner of Section 10.

## Description of evidence found

On February 21st, 2013, Anderson Engineering of Minnesota located the True Cast Products monument 9 inches below grade in the swale of a field.

No. 21702030020

Description of corner and witness monuments, references and accessories used to perpetuate the original or re-established location of this corner:

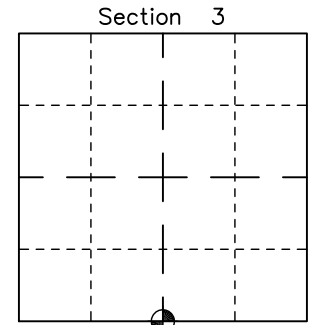
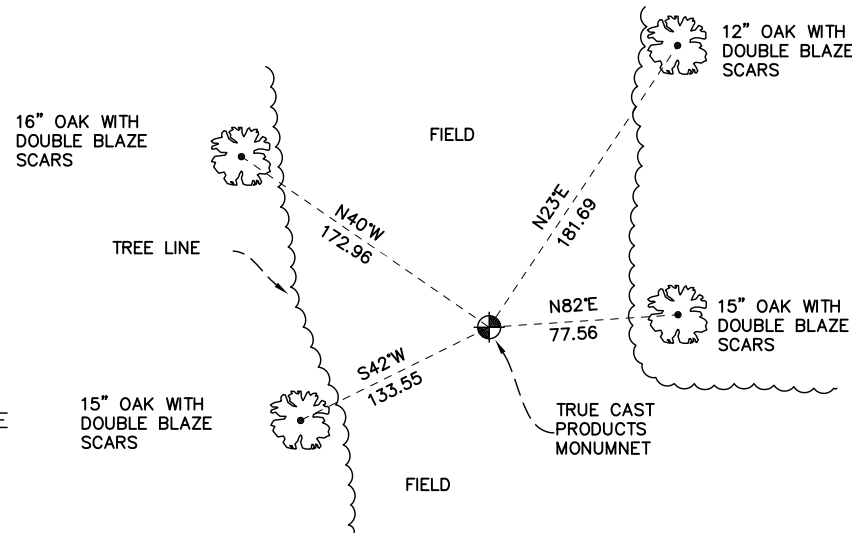
Witnesses to corner location:

Nick Hillmer  
Dan Greenwald

MONROE COUNTY  
COORDINATE SYSTEM  
NAD 1983 (2007)

TRUE CAST PRODUCTS MONUMENT  
Northing (Y) 389459.06  
Easting (X) 681349.97

Base Station - 22 182W  
Northing (Y) 408053.25  
Easting (X) 679287.00



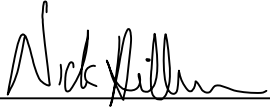
● = LOCATION CORNER  
Corner I.D. S 1/4 3  
T 17 N R 2 W  
Town of Adrian  
Monroe County, WI.

All distances are shown in U.S. Survey Feet.  
Bearings are for tie reference purposes only.  
Coordinates were derived from RTK GNSS procedures.

# CERTIFICATE

I, Nicholas M. Hillmer, do hereby certify that this document and the data contained herein was prepared by me or under my direct supervision and that I am a duly Licensed Land Surveyor under the laws of the State of Wisconsin.

Dated this 23rd day of May, 2013



Nicholas M. Hillmer, P.L.S. 2909  
Anderson Engineering of Minnesota, LLC.

# CERTIFIED LAND CORNER

## History of corner established since Original Government Survey

Henry Schroeder was here in May of 1883. In November of 1940 Ray Hurlburt set an auto steering post using both original bearing trees. Bryan Meyer found Hurlburt's monument in 1983 and accepted it as the corner.

## Description of evidence found

On February 21, 2013, Anderson Engineering of Minnesota located the axle shaft 0.8 feet above grade. The monument is a 1 1/2 inch axle rod with a 5/8 inch shaft projecting out of the axle rod.

No. 21702032000

Description of corner and witness monuments, references and accessories used to perpetuate the original or re-established location of this corner:

Witnesses to corner location:

Nick Hillmer  
Josh Oslund  
Dan Greenwald

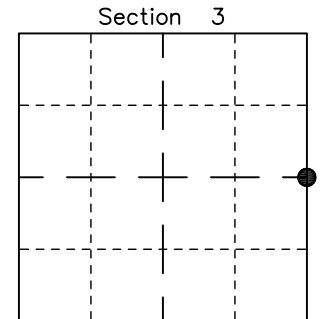
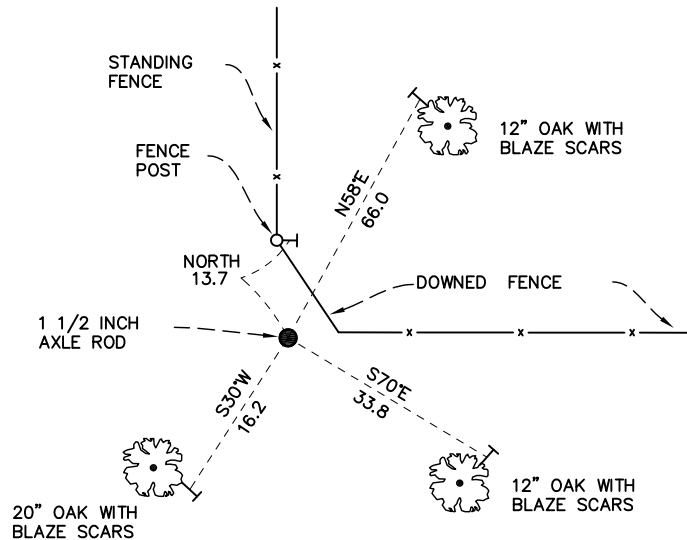
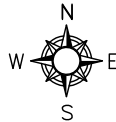
MONROE COUNTY  
COORDINATE SYSTEM  
NAD 1983 (2007)

AXLE SHAFT

Northing (Y) 392136.82  
Easting (X) 684027.77

Base Station - 22 182W

Northing (Y) 408053.25  
Easting (X) 679287.00



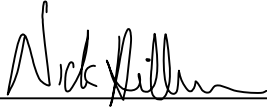
● = LOCATION CORNER  
Corner I.D. E 1/4 3  
T 17 N R 2 W  
Town of Adrian  
Monroe County, WI.

All distances are shown in U.S. Survey Feet.  
Ties are to 60D nails set in trees.  
Bearings are for tie reference purposes only.  
Coordinates were derived from RTK GNSS procedures.

# CERTIFICATE

I, Nicholas M. Hillmer, do hereby certify that this document and the data contained herein was prepared by me or under my direct supervision and that I am a duly Licensed Land Surveyor under the laws of the State of Wisconsin.

Dated this 23rd day of May, 2013



Nicholas M. Hillmer, P.L.S. 2909  
Anderson Engineering of Minnesota, LLC.

# CERTIFIED LAND CORNER

## History of corner established since Original Government Survey

Hamilton Larue was here in September of 1900 and set a stone. Ray W. Hurlburt was here in November of 1940 and set a torque tube next to Larue's stone. William Jung was here in November of 1974 and was unable to find the stone or torque tube. Lawrence Feddersen was here in May of 1989 and found a stone, well marked on all four sides, down 12-15 inches. He did not find the torque tube. Feddersen replaced the stone with a Harrison monument. Bryan Meyer found the Harrison monument in 1991.

## Description of evidence found

On February 7th, 2013, Anderson Engineering of Minnesota located a Harrison monument 1.0 foot west of the intersection of a fence that runs north, south, and west. The mark is 1.0 foot east of a witness post with a survey marker sign, 170 feet south of an east-west gravel road, and 45 feet south of a creek/gully.

No. 21702100000

Description of corner and witness monuments, references and accessories used to perpetuate the original or re-established location of this corner:

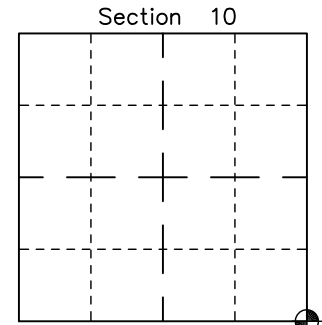
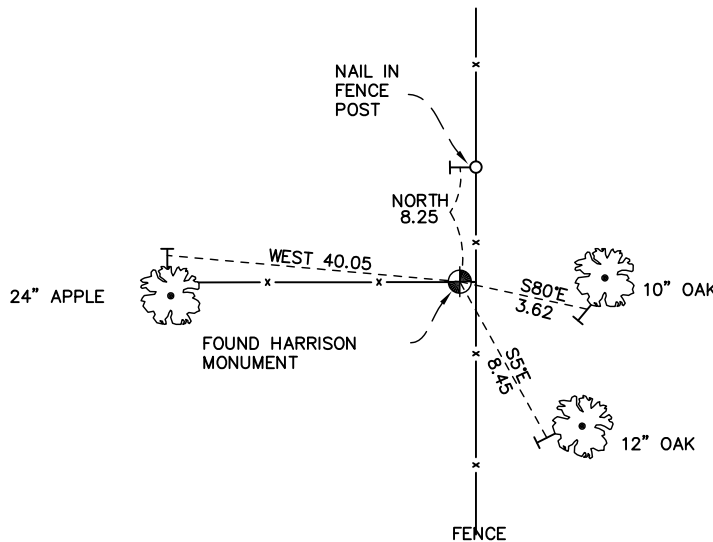
Witnesses to corner location:

Nick Hillmer  
Josh Oslund  
Dan Greenwald

MONROE COUNTY  
COORDINATE SYSTEM  
NAD 1983 (2007)

HARRISON MONUMENT  
Northing (Y) 384273.76  
Easting (X) 684004.76

Base Station - 22 182W  
Northing (Y) 408053.25  
Easting (X) 679287.00



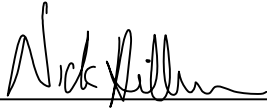
⊙ = LOCATION CORNER  
Corner I.D. SE 10  
T 17 N R 2 W  
Town of Adrian  
Monroe County, WI.

All distances are shown in U.S. Survey Feet.  
Ties are to 60D nails set in trees.  
Bearings are for tie reference purposes only.  
Coordinates were derived from RTK GNSS procedures.

# CERTIFICATE

I, Nicholas M. Hillmer, do hereby certify that this document and the data contained herein was prepared by me or under my direct supervision and that I am a duly Licensed Land Surveyor under the laws of the State of Wisconsin.

Dated this 23rd day of May, 2013



Nicholas M. Hillmer, P.L.S. 2909  
Anderson Engineering of Minnesota, LLC.

# CERTIFIED LAND CORNER

## History of corner established since Original Government Survey

H. Schroeder was at this corner in 1886. In December of 1974 Harley A. Sime set a Harrison monument by occupation. In 1996 Bryan Meyer found three of the ties missing and retied the corner with three new ties and one old tie.

## Description of evidence found

On February 21, 2013, Anderson Engineering of Minnesota located the Harrison monument in a lowland area and 0.8 foot West of a fence.

No. 21702102000

Description of corner and witness monuments, references and accessories used to perpetuate the original or re-established location of this corner:

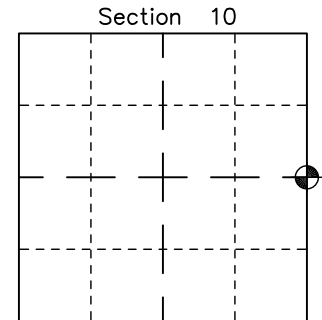
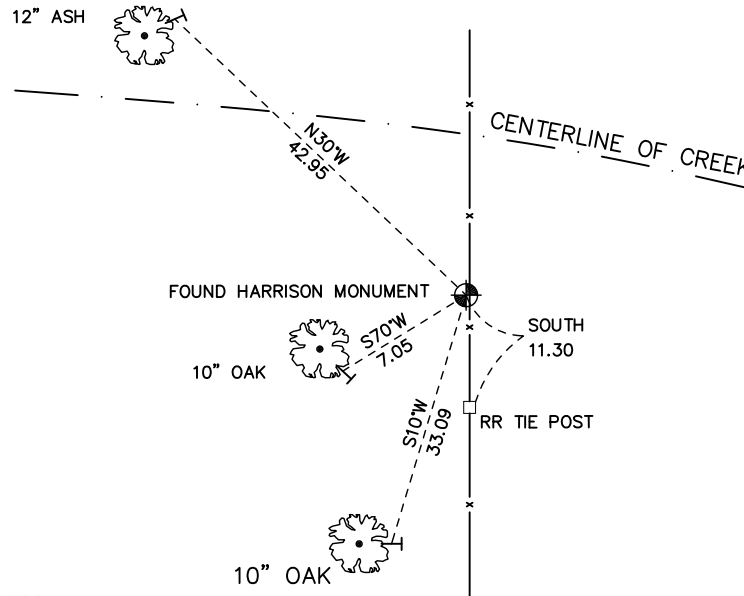
Witnesses to corner location:

Nick Hillmer  
Dan Greenwald

MONROE COUNTY  
COORDINATE SYSTEM  
NAD 1983 (2007)

HARRISON MONUMENT  
Northing (Y) 386880.78  
Easting (X) 683980.24

Base Station - 22 182W  
Northing (Y) 408053.25  
Easting (X) 679287.00



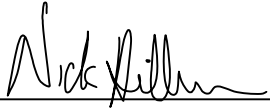
⊙ = LOCATION CORNER  
Corner I.D. E 1/4 10  
T 17 N R 2 W  
Town of Adrian  
Monroe County, WI.

All distances are shown in U.S. Survey Feet.  
Ties are to 60D nails set in trees.  
Bearings are for tie reference purposes only.  
Coordinates were derived from RTK GNSS procedures.

# CERTIFICATE

I, Nicholas M. Hillmer, do hereby certify that this document and the data contained herein was prepared by me or under my direct supervision and that I am a duly Licensed Land Surveyor under the laws of the State of Wisconsin.

Dated this 23rd day of May, 2013



Nicholas M. Hillmer, P.L.S. 2909  
Anderson Engineering of Minnesota, LLC.

# CERTIFIED LAND CORNER

## History of corner established since Original Government Survey

Gary Dechant set a Harrison monument at the intersection of fences to the west, north, and south. The position falls near the centerline of the town road.

## Description of evidence found

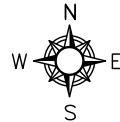
On March 14th, 2013, Anderson Engineering of Minnesota located the Harrison monument 8 inches below grade and 2.5 feet west of the centerline of the road.

No. 21702150000

Description of corner and witness monuments, references and accessories used to perpetuate the original or re-established location of this corner:

Witnesses to corner location:

Nick Hillmer  
Josh Oslund  
Dan Greenwald

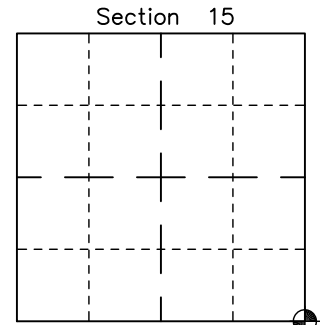
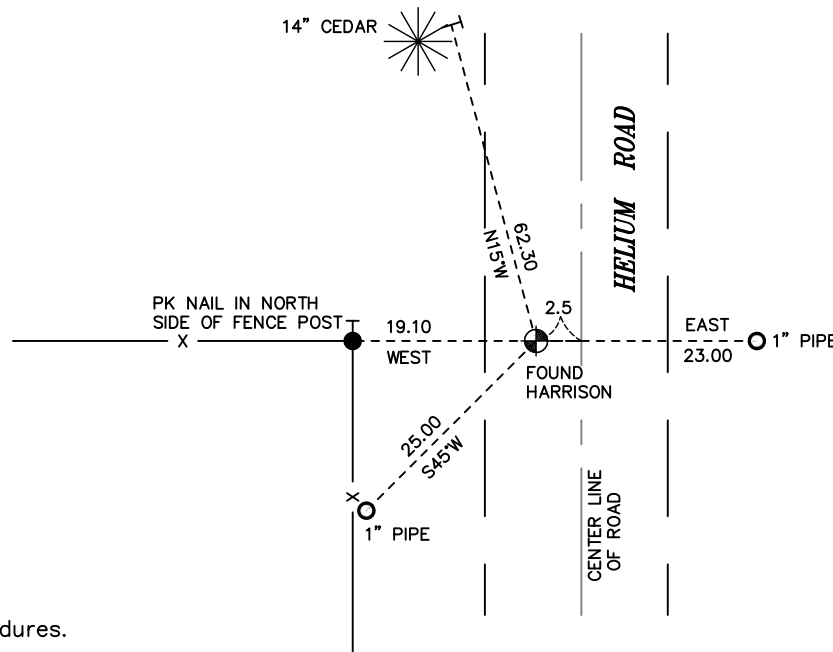


MONROE COUNTY  
COORDINATE SYSTEM  
NAD 1983 (2007)

HARRISON MONUMENT  
Northing (Y) 378930.24  
Easting (X) 684080.99

Base Station - 22 182W  
Northing (Y) 408053.25  
Easting (X) 679287.00

All distances are shown in U.S. Survey Feet.  
Bearings are for tie reference purposes only.  
Coordinates were derived from RTK GNSS procedures.

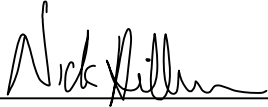


⊙ = LOCATION CORNER  
Corner I.D. SE 15  
T 17 N R 2 W  
Town of Adrian  
Monroe County, WI.

# CERTIFICATE

I, Nicholas M. Hillmer, do hereby certify that this document and the data contained herein was prepared by me or under my direct supervision and that I am a duly Licensed Land Surveyor under the laws of the State of Wisconsin.

Dated this 23rd day of May, 2013



Nicholas M. Hillmer, P.L.S. 2909  
Anderson Engineering of Minnesota, LLC.

# CERTIFIED LAND CORNER

## History of corner established since Original Government Survey

In 1992 Gary L. Dechant first reestablished the NW corner of the NE1/4-NE1/4 by projecting the line westward 11 rods from the occupied NE corner of the exception, described in Volume 14 R., Page 18, from the NE1/4-NE1/4 of Section 22. The North 1/4 was then reset at a doubled distance and online with this computed forty corner and the northeast corner of the Section. Dechant stated the location fit other field evidence well and set a TCP monument down below plow depth.

## Description of evidence found

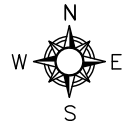
On March 14th, 2013, Anderson Engineering of Minnesota located the TCP monument with the top broken off 1.5 feet below grade.

No. 21702150020

Description of corner and witness monuments, references and accessories used to perpetuate the original or re-established location of this corner:

Witnesses to corner location:

Nick Hillmer  
Josh Oslund  
Dan Greenwald



MONROE COUNTY  
COORDINATE SYSTEM  
NAD 1983 (2007)

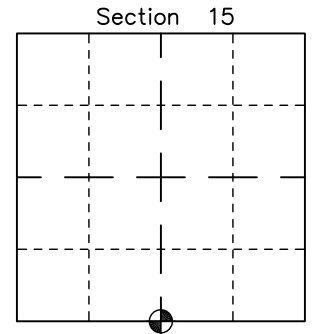
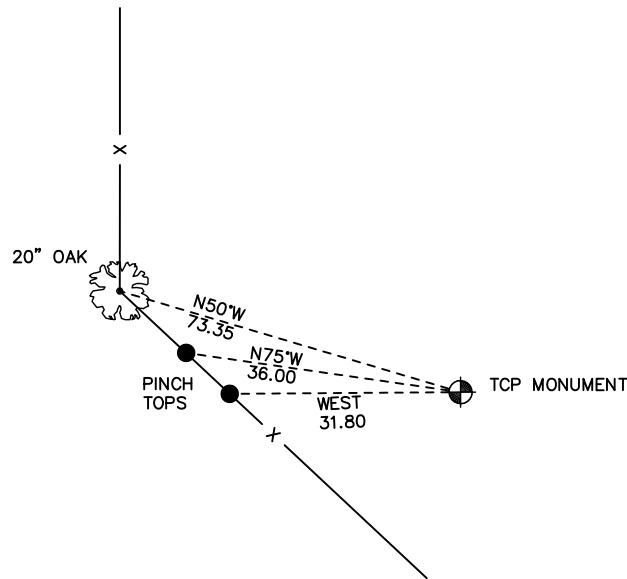
TCP MONUMENT

Northing (Y) 378941.88  
Easting (X) 681475.40

Base Station - 22 182W

Northing (Y) 408053.25  
Easting (X) 679287.00

All distances are shown in U.S. Survey Feet.  
Ties are to 60D nails set in trees.  
Bearings are for tie reference purposes only.  
Coordinates were derived from RTK GNSS procedures.

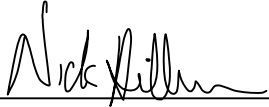


⊕ = LOCATION CORNER  
Corner I.D. S 1/4 15  
T 17 N R 2 W  
Town of Adrian  
Monroe County, WI.

# CERTIFICATE

I, Nicholas M. Hillmer, do hereby certify that this document and the data contained herein was prepared by me or under my direct supervision and that I am a duly Licensed Land Surveyor under the laws of the State of Wisconsin.

Dated this 23rd day of May, 2013



Nicholas M. Hillmer, P.L.S. 2909  
Anderson Engineering of Minnesota, LLC.

# CERTIFIED LAND CORNER

## History of corner established since Original Government Survey

In August of 1977 Harley A. Sime traversed parts of Sections 14 and 15 and set the corner by best available evidence after studying field data, original government notes, and aerial photos. Sime found no evidence of original bearing trees or the original stake and set a Harrison monument down 8 inches along the west side of the road.

No. 21702152000

## Description of evidence found

On February 21, 2013, Anderson Engineering of Minnesota located the Harrison monument 1 foot below the road at the edge of bituminous.

Description of corner and witness monuments, references and accessories used to perpetuate the original or re-established location of this corner:

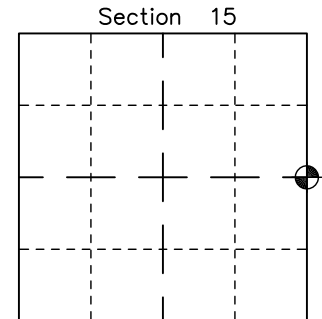
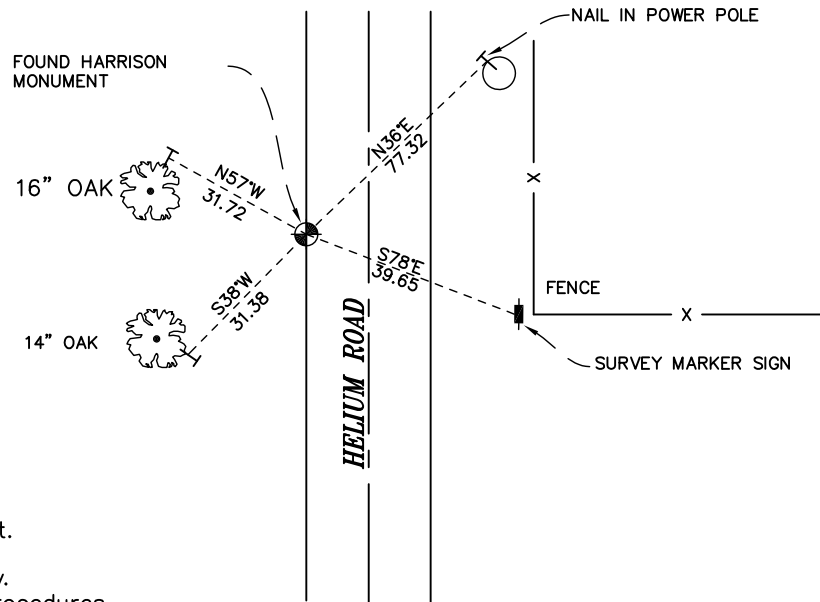
Witnesses to corner location:

Nick Hillmer  
Dan Greenwald

MONROE COUNTY  
COORDINATE SYSTEM  
NAD 1983 (2007)

HARRISON MONUMENT  
Northing (Y) 381602.65  
Easting (X) 684042.66

Base Station - 22 182W  
Northing (Y) 408053.25  
Easting (X) 679287.00



⊙ = LOCATION CORNER  
Corner I.D. E 1/4 15  
T 17 N R 2 W  
Town of Adrian  
Monroe County, WI.

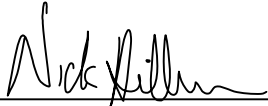
All distances are shown in U.S. Survey Feet.  
Ties are to 60D nails set in trees.  
Bearings are for tie reference purposes only.  
Coordinates were derived from RTK GNSS procedures.



**CERTIFICATE**

I, Nicholas M. Hillmer, do hereby certify that this document and the data contained herein was prepared by me or under my direct supervision and that I am a duly Licensed Land Surveyor under the laws of the State of Wisconsin.

Dated this 23rd day of May, 2013



Nicholas M. Hillmer, P.L.S. 2909  
Anderson Engineering of Minnesota, LLC.

**CERTIFIED LAND CORNER**

History of corner established since Original Government Survey

Lawrence A. Feddersen found wire from an old fence in the ground running north, south, and west. Feddersen set a Harrison monument at the intersection of the fence lines.

Description of evidence found

On February 26th, 2013, Anderson Engineering of Minnesota located the Harrison monument flush with the ground. The mark is 11 feet west of the centerline of a trail.

No. 21702180000

Description of corner and witness monuments, references and accessories used to perpetuate the original or re-established location of this corner:

Witnesses to corner location:

Nick Hillmer  
Josh Oslund  
Dan Greenwald

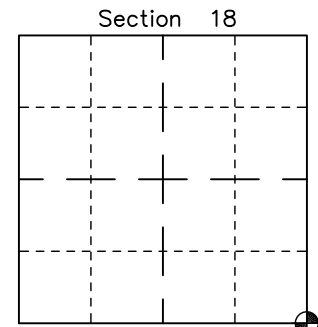
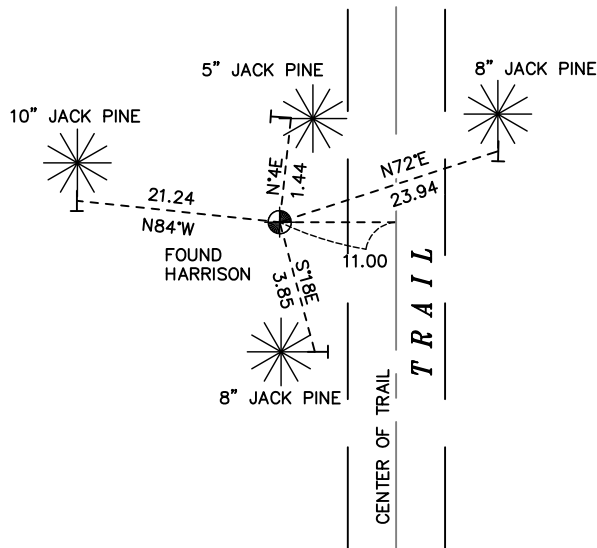


MONROE COUNTY  
COORDINATE SYSTEM  
NAD 1983 (2007)

HARRISON MONUMENT  
Northing (Y) 378892.87  
Easting (X) 668511.15

Base Station - 22 182W  
Northing (Y) 408053.25  
Easting (X) 679287.00

All distances are shown in U.S. Survey Feet.  
Ties are to 60D nails set in trees.  
Bearings are for tie reference purposes only.  
Coordinates were derived from RTK GNSS procedures.

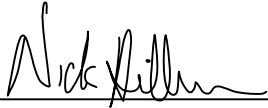


● = LOCATION CORNER  
Corner I.D. SE 18  
T 17 N R 2 W  
Town of Adrian  
Monroe County, WI.

# CERTIFICATE

I, Nicholas M. Hillmer, do hereby certify that this document and the data contained herein was prepared by me or under my direct supervision and that I am a duly Licensed Land Surveyor under the laws of the State of Wisconsin.

Dated this 23rd day of May, 2013



Nicholas M. Hillmer, P.L.S. 2909  
Anderson Engineering of Minnesota, LLC.

# CERTIFIED LAND CORNER

## History of corner established since Original Government Survey

Fred Holden was here in April of 1907. Harley Sime was here in June of 1961. In 1980 Harley Sime set a Harrison monument by single proportion measurement.

## Description of evidence found

On February 7, 2013, Anderson Engineering of Minnesota located the Harrison monument 0.3 foot below grade. The Harrison monument is 16 feet east of the centerline of Incline Road and 131 feet southeast of the intersection of County Highway A and Incline Road.

No. 21702190020

Description of corner and witness monuments, references and accessories used to perpetuate the original or re-established location of this corner:

Witnesses to corner location:

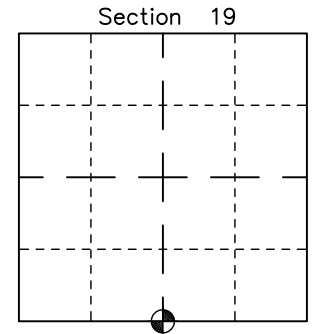
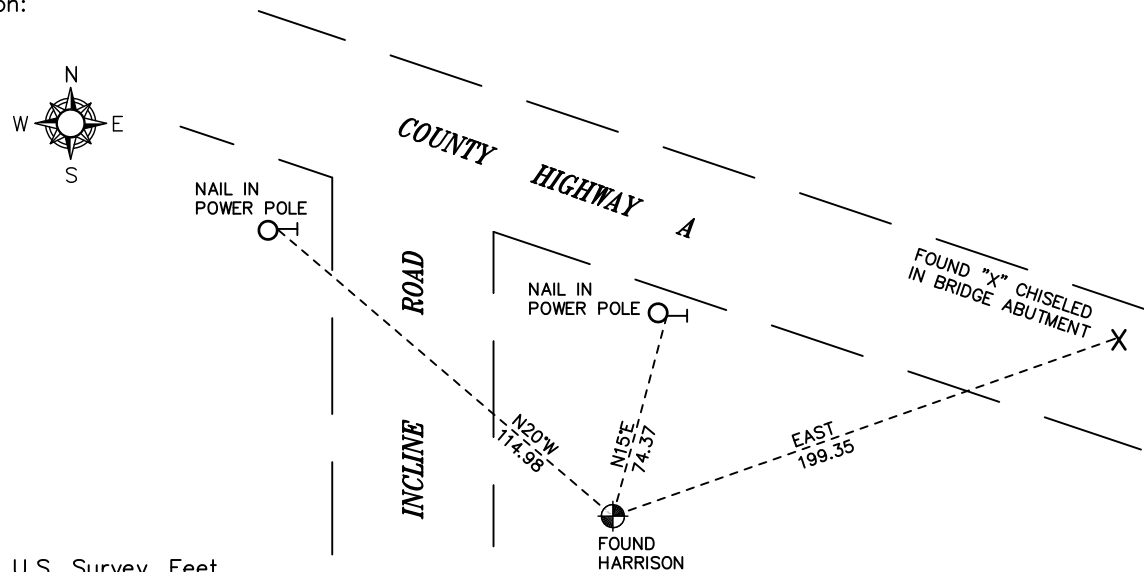
Nick Hillmer  
Josh Oslund  
Dan Greenwald

MONROE COUNTY  
COORDINATE SYSTEM  
NAD 1983 (2007)

HARRISON MONUMENT  
Northing (Y) 373658.87  
Easting (X) 665857.80

Base Station - 22 182W  
Northing (Y) 408053.25  
Easting (X) 679287.00

All distances are shown in U.S. Survey Feet.  
Bearings are for tie reference purposes only.  
Coordinates were derived from RTK GNSS procedures.

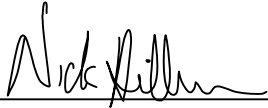


● = LOCATION CORNER  
Corner I.D. S 1/4 19  
T 17 N R 2 W  
Town of Adrian  
Monroe County, WI.

**CERTIFICATE**

I, Nicholas M. Hillmer, do hereby certify that this document and the data contained herein was prepared by me or under my direct supervision and that I am a duly Licensed Land Surveyor under the laws of the State of Wisconsin.

Dated this 23rd day of May, 2013



Nicholas M. Hillmer, P.L.S. 2909  
Anderson Engineering of Minnesota, LLC.

**CERTIFIED LAND CORNER**

**History of corner established since Original Government Survey**

In 1993 Lawrence A. Feddersen set a Harrison monument at the corner by using a downed fence as the east line of Section 29 and projecting the north line of the Northeast Quarter of Section 30 to the east to intersect with the downed fence.

**Description of evidence found**

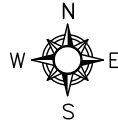
On October 30th, 2012, Anderson Engineering of Minnesota located the Harrison monument flush with the ground and 1.0 foot south of a witness post with survey marker sign.

No. 21702200000

Description of corner and witness monuments, references and accessories used to perpetuate the original or re-established location of this corner:

Witnesses to corner location:

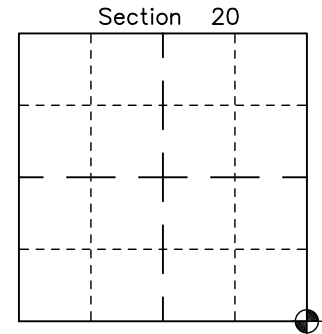
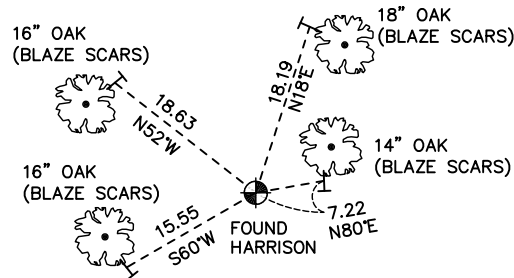
Nick Hillmer  
Josh Oslund  
Dan Greenwald



MONROE COUNTY  
COORDINATE SYSTEM  
NAD 1983 (2007)

HARRISON MONUMENT  
Northing (Y) 373707.41  
Easting (X) 673690.09

Base Station - 22 182W  
Northing (Y) 408053.25  
Easting (X) 679287.00



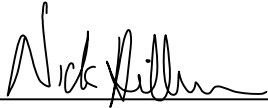
☉ = LOCATION CORNER  
Corner I.D. SE 20  
T 17 N R 2 W  
Town of Adrian  
Monroe County, WI.

All distances are shown in U.S. Survey Feet.  
Ties are to 60D nails set in trees.  
Bearings are for tie reference purposes only.  
Coordinates were derived from RTK GNSS procedures.

# CERTIFICATE

I, Nicholas M. Hillmer, do hereby certify that this document and the data contained herein was prepared by me or under my direct supervision and that I am a duly Licensed Land Surveyor under the laws of the State of Wisconsin.

Dated this 23rd day of May, 2013



Nicholas M. Hillmer, P.L.S. 2909  
Anderson Engineering of Minnesota, LLC.

# CERTIFIED LAND CORNER

## History of corner established since Original Government Survey

In 1993 Lawrence A. Feddersen set a Harrison monument at the corner that is online and equal distance from each section corner. Feddersen states that the ground in the immediate area has been disturbed by large equipment.

No. 21702200020

## Description of evidence found

On October 30th, 2012, Anderson Engineering of Minnesota located the Harrison monument flush with the ground and 1.0 foot north of a witness post with survey marker sign.

Description of corner and witness monuments, references and accessories used to perpetuate the original or re-established location of this corner:

Witnesses to corner location:

Nick Hillmer  
Josh Oslund  
Dan Greenwald

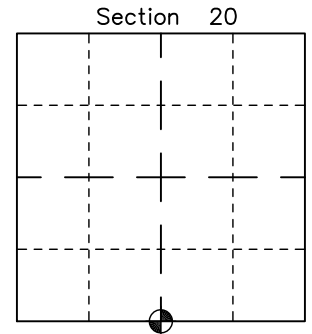
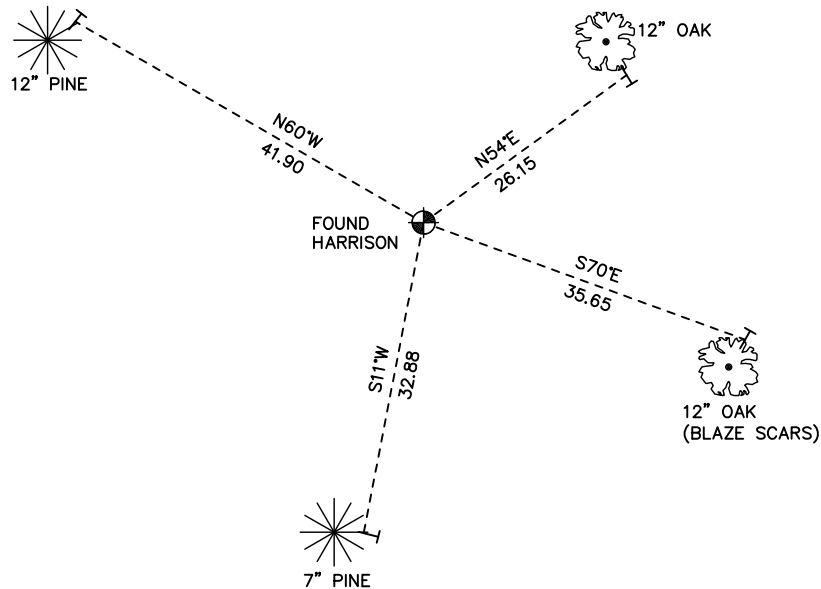


MONROE COUNTY  
COORDINATE SYSTEM  
NAD 1983 (2007)

HARRISON MONUMENT  
Northing (Y) 373691.22  
Easting (X) 671093.67

Base Station - 22 182W  
Northing (Y) 408053.25  
Easting (X) 679287.00

All distances are shown in U.S. Survey Feet.  
Ties are to 60D nails set in trees.  
Bearings are for tie reference purposes only.  
Coordinates were derived from RTK GNSS procedures.

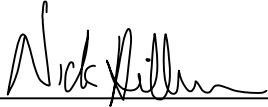


● = LOCATION CORNER  
Corner I.D. S 1/4 20  
T 17 N R 2 W  
Town of Adrian  
Monroe County, WI.

# CERTIFICATE

I, Nicholas M. Hillmer, do hereby certify that this document and the data contained herein was prepared by me or under my direct supervision and that I am a duly Licensed Land Surveyor under the laws of the State of Wisconsin.

Dated this 23rd day of May, 2013



Nicholas M. Hillmer, P.L.S. 2909  
Anderson Engineering of Minnesota, LLC.

# CERTIFIED LAND CORNER

History of corner established since Original Government Survey

Gary L. Dechant accepted an old fence corner as the best available evidence and set a Harrison monument at this location.

Description of evidence found

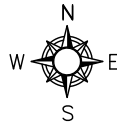
On February 26th, 2013, Anderson Engineering of Minnesota located the Harrison monument 0.4 feet above grade and 1 foot east of a witness post. The monument is on a downed north-south fence line with stones set around the Harrison monument.

No. 21702210000

Description of corner and witness monuments, references and accessories used to perpetuate the original or re-established location of this corner:

Witnesses to corner location:

Nick Hillmer  
Josh Oslund  
Dan Greenwald

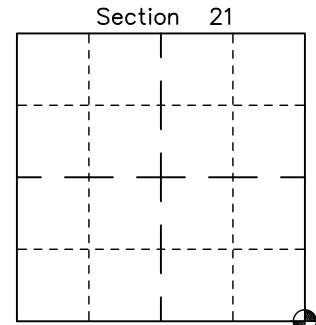
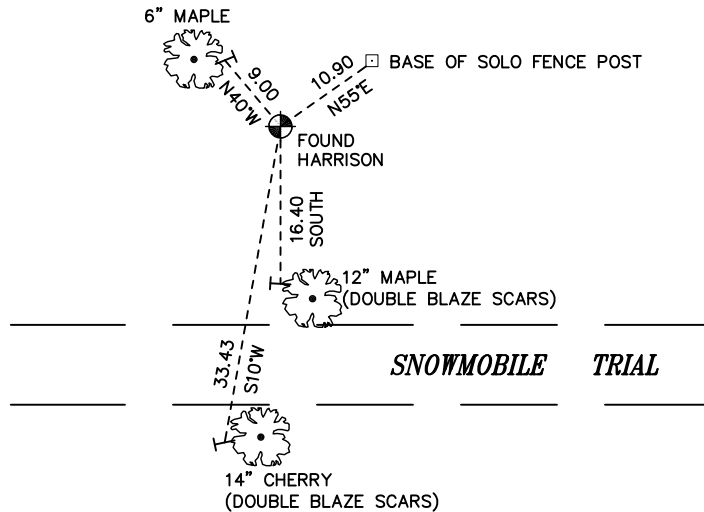


MONROE COUNTY  
COORDINATE SYSTEM  
NAD 1983 (2007)

HARRISON MONUMENT  
Northing (Y) 373724.63  
Easting (X) 678886.34

Base Station - 22 182W  
Northing (Y) 408053.25  
Easting (X) 679287.00

All distances are shown in U.S. Survey Feet.  
Ties are to 60D nails set in trees.  
Bearings are for tie reference purposes only.  
Coordinates were derived from RTK GNSS procedures.

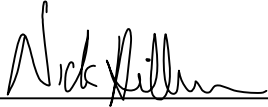


⊙ = LOCATION CORNER  
Corner I.D. SE 21  
T 17 N R 2 W  
Town of Adrian  
Monroe County, WI.

# CERTIFICATE

I, Nicholas M. Hillmer, do hereby certify that this document and the data contained herein was prepared by me or under my direct supervision and that I am a duly Licensed Land Surveyor under the laws of the State of Wisconsin.

Dated this 23rd day of May, 2013



Nicholas M. Hillmer, P.L.S. 2909  
Anderson Engineering of Minnesota, LLC.

# CERTIFIED LAND CORNER

## History of corner established since Original Government Survey

In 1985 Gary Dechant did not find any evidence. Dechant set a Harrison monument online and halfway between section corners down 15 inches.

## Description of evidence found

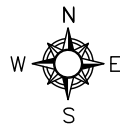
On February 26th, 2013, Anderson Engineering of Minnesota located the Harrison monument 18 inches below grade in a cultivated field.

No. 21702280020

Description of corner and witness monuments, references and accessories used to perpetuate the original or re-established location of this corner:

Witnesses to corner location:

Nick Hillmer  
Josh Oslund  
Dan Greenwald

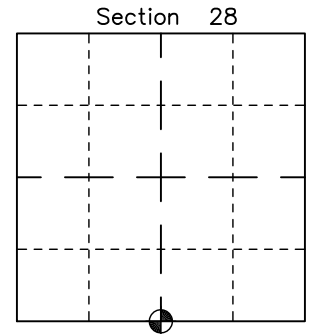
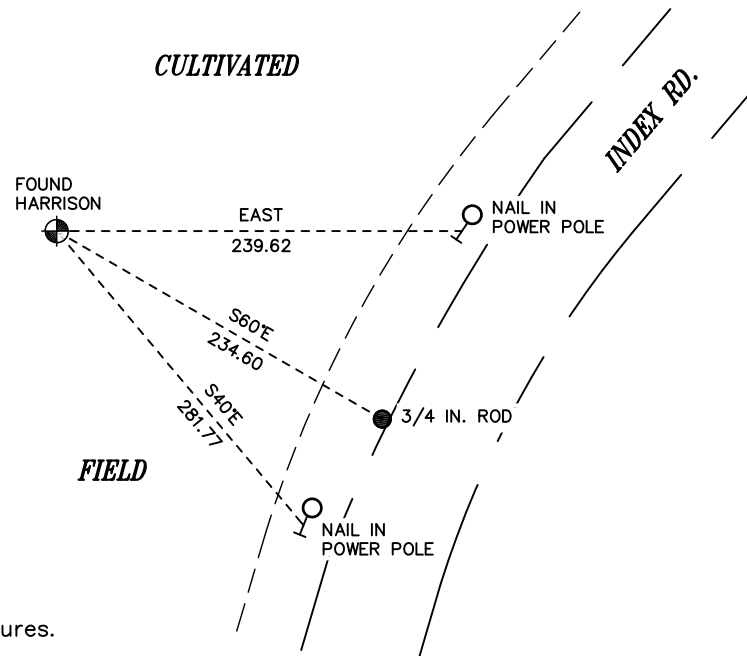


MONROE COUNTY  
COORDINATE SYSTEM  
NAD 1983 (2007)

HARRISON MONUMENT  
Northing (Y) 368481.23  
Easting (X) 676316.49

Base Station - 22 182W  
Northing (Y) 408053.25  
Easting (X) 679287.00

All distances are shown in U.S. Survey Feet.  
Bearings are for tie reference purposes only.  
Coordinates were derived from RTK GNSS procedures.

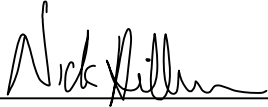


⊙ = LOCATION CORNER  
Corner I.D. S 1/4 28  
T 17 N R 2 W  
Town of Adrian  
Monroe County, WI.

# CERTIFICATE

I, Nicholas M. Hillmer, do hereby certify that this document and the data contained herein was prepared by me or under my direct supervision and that I am a duly Licensed Land Surveyor under the laws of the State of Wisconsin.

Dated this 23rd day of May, 2013



Nicholas M. Hillmer, P.L.S. 2909  
Anderson Engineering of Minnesota, LLC.

# CERTIFIED LAND CORNER

## History of corner established since Original Government Survey

Kim Pritzlaff set an iron bar at the occupied corner in April of 1975. William Jung found the iron bar and accepted it as the corner. In 1980 Jung removed the bar and replaced it with a Harrison monument.

No. 21702282000

## Description of evidence found

On February 26th, 2013, Anderson Engineering of Minnesota located the Harrison monument 0.4 foot above grade at the intersection of fences running north, south, and east.

Description of corner and witness monuments, references and accessories used to perpetuate the original or re-established location of this corner:

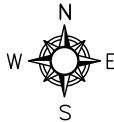
Witnesses to corner location:

Nick Hillmer  
Josh Oslund  
Dan Greenwald

MONROE COUNTY  
COORDINATE SYSTEM  
NAD 1983 (2007)

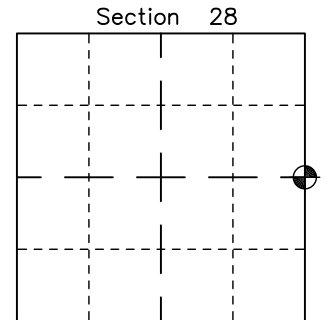
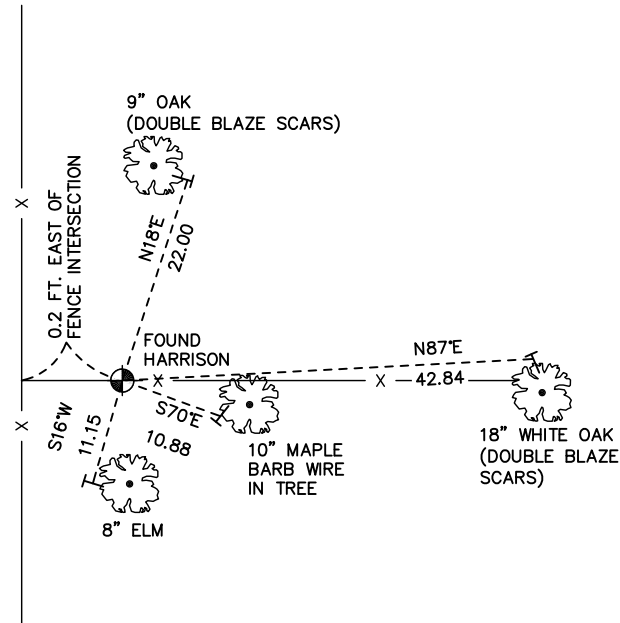
HARRISON MONUMENT  
Northing (Y) 371141.75  
Easting (X) 678917.36

Base Station - 22 182W  
Northing (Y) 408053.25  
Easting (X) 679287.00



All distances are shown in U.S. Survey Feet.  
Ties are to 60D nails set in trees.  
Bearings are for tie reference purposes only.  
Coordinates were derived from RTK GNSS procedures.

CULTIVATED FIELD

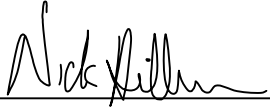


● = LOCATION CORNER  
Corner I.D. E 1/4 28  
T 17 N R 2 W  
Town of Adrian  
Monroe County, WI.

# CERTIFICATE

I, Nicholas M. Hillmer, do hereby certify that this document and the data contained herein was prepared by me or under my direct supervision and that I am a duly Licensed Land Surveyor under the laws of the State of Wisconsin.

Dated this 23rd day of May, 2013



Nicholas M. Hillmer, P.L.S. 2909  
Anderson Engineering of Minnesota, LLC.

# CERTIFIED LAND CORNER

## History of corner established since Original Government Survey

In 1993 Lawrence Feddersen set a 2 inch round bar on line and equal distance from the section corners.

## Description of evidence found

On February 7th, 2013, Anderson Engineering of Minnesota located the 2 inch round iron bar with a chiseled "X". The mark was 0.2 feet below grade on the east side of the bituminous road.

No. 21702290020

Description of corner and witness monuments, references and accessories used to perpetuate the original or re-established location of this corner:

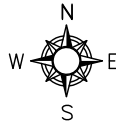
Witnesses to corner location:

Nick Hillmer  
Josh Oslund  
Dan Greenwald

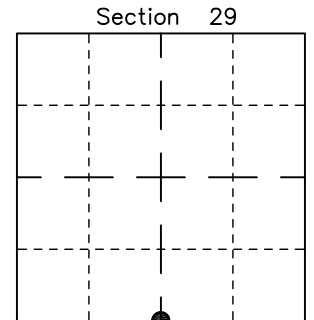
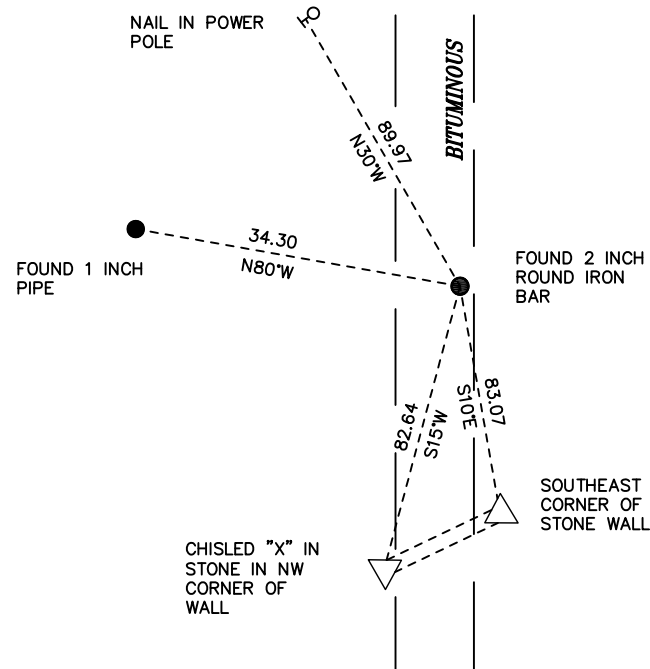
MONROE COUNTY  
COORDINATE SYSTEM  
NAD 1983 (2007)

2 INCH ROUND IRON BAR  
Northing (Y) 368442.85  
Easting (X) 671047.83

Base Station - 22 182W  
Northing (Y) 408053.25  
Easting (X) 679287.00



All distances are shown in U.S. Survey Feet.  
Bearings are for tie reference purposes only.  
Coordinates were derived from RTK GNSS procedures.



● = LOCATION CORNER  
Corner I.D. S 1/4 29  
T 17 N R 2 W  
Town of Adrian  
Monroe County, WI.



# CERTIFICATE

I, Nicholas M. Hillmer, do hereby certify that this document and the data contained herein was prepared by me or under my direct supervision and that I am a duly Licensed Land Surveyor under the laws of the State of Wisconsin.

Dated this 23rd day of May, 2013

Nicholas M. Hillmer, P.L.S. 2909  
Anderson Engineering of Minnesota, LLC.

# CERTIFIED LAND CORNER

## History of corner established since Original Government Survey

In 1993 Lawrence A. Feddersen set a Harrison monument at the corner online and equal distance from each section corner.

## Description of evidence found

On February 7th, 2013, Anderson Engineering of Minnesota located a 2 inch round bar with "X" 0.4 feet below grade in a mowed grass area.

No. 21702292000

Description of corner and witness monuments, references and accessories used to perpetuate the original or re-established location of this corner:

Witnesses to corner location:

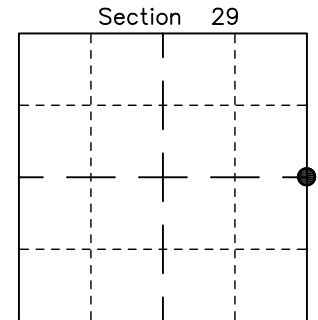
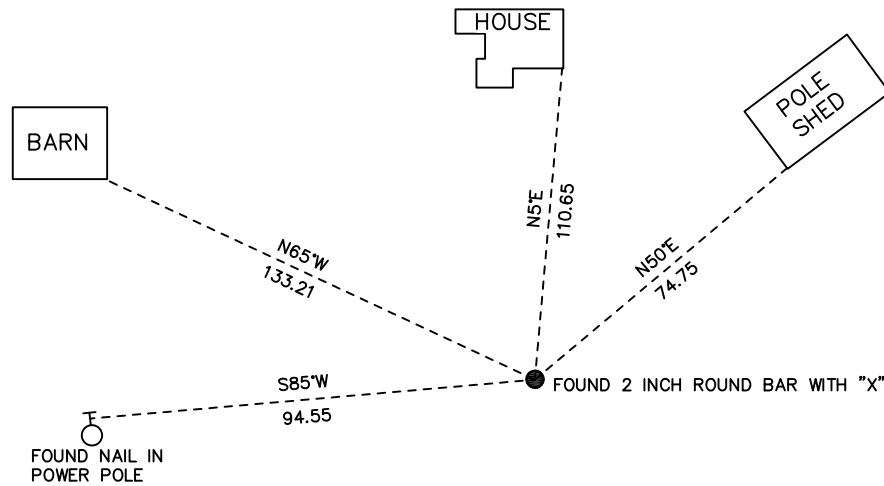
Nick Hillmer  
Josh Oslund  
Dan Greenwald

MONROE COUNTY  
COORDINATE SYSTEM  
NAD 1983 (2007)

2 INCH ROUND BAR  
Northing (Y) 371078.48  
Easting (X) 673681.39

Base Station - 22 182W  
Northing (Y) 408053.25  
Easting (X) 679287.00

All distances are shown in U.S. Survey Feet.  
Bearings are for tie reference purposes only.  
Coordinates were derived from RTK GNSS procedures.



● = LOCATION CORNER  
Corner I.D. E 1/4 29  
T 17 N R 2 W  
Town of Adrian  
Monroe County, WI.

# CERTIFICATE

I, Nicholas M. Hillmer, do hereby certify that this document and the data contained herein was prepared by me or under my direct supervision and that I am a duly Licensed Land Surveyor under the laws of the State of Wisconsin.

Dated this 23rd day of May, 2013

Nicholas M. Hillmer, P.L.S. 2909  
Anderson Engineering of Minnesota, LLC.

# CERTIFIED LAND CORNER

History of corner established since Original Government Survey

IN 1993 Lawrence Fedderson established this corner on line and equal distance from the section corners.

Description of evidence found

On May 20, 2012, Anderson Engineering of Minnesota located the Harrison monument down 1.5 feet below grade.

No. 21702302000

Description of corner and witness monuments, references and accessories used to perpetuate the original or re-established location of this corner:

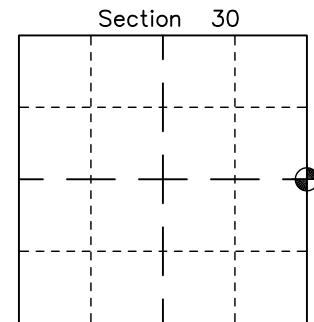
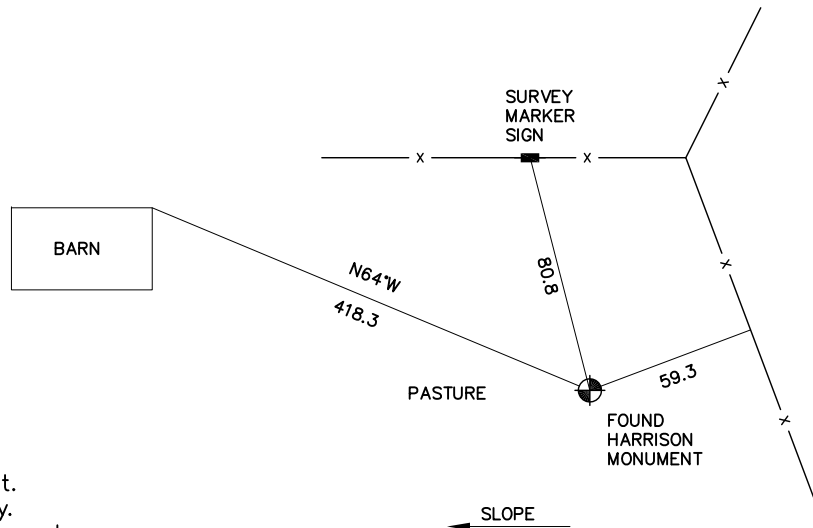
Witnesses to corner location:

Nick Hillmer  
Josh Oslund  
Dan Greenwald

MONROE COUNTY  
COORDINATE SYSTEM  
NAD 1983 (2007)

HARRISON MONUMENT  
Northing (Y) 371055.61  
Easting (X) 668459.63

Base Station - 22 182W  
Northing (Y) 408053.25  
Easting (X) 679287.00



⊙ = LOCATION CORNER  
Corner I.D. E 1/4 30  
T 17 N R 2 W  
Town of Adrian  
Monroe County, WI.

All distances are shown in U.S. Survey Feet.  
Bearings are for tie reference purposes only.  
Coordinates were derived from RTK GNSS procedures.