

2013 Fort McCoy boundary monuments of Township 17 North, Range 2 West Adrian

LEGEND

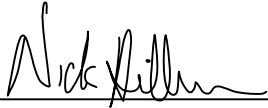
- Boundary monument
- 17.2.X "X" Denotes preceding page number



CERTIFICATE

I, Nicholas M. Hillmer, do hereby certify that this document and the data contained herein was prepared by me or under my direct supervision and that I am a duly Licensed Land Surveyor under the laws of the State of Wisconsin.

Dated this 21st day of May, 2013



Nicholas M. Hillmer, P.L.S. 2909
Anderson Engineering of Minnesota, LLC.

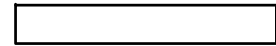
CERTIFIED LAND CORNER

History of corner established since Original Government Survey

The 1940's McCoy boundary notes show a corner at this location.

Description of evidence found

On September 27th, 2012, Anderson Engineering of Minnesota located the McCoy monument, a 4 inch U.S. Army Corps of Engineers survey control mark disk set in concrete 0.5 feet above grade. The monument was not accepted as the corner. On May 8th, 2013, Anderson Engineering of Minnesota set a 30 inch Berntsen aluminum dig monument with a 3 1/4 inch aluminum cap, stamped "FORT MCCOY BOUNDARY" "2013" "ANDERSON ENG. OF MN." The monument is set at the intersection of the east-west quarter line and the east line of the west 4 rods of the East Half of the Northeast Quarter.

No. _____


Description of corner and witness monuments, references and accessories used to perpetuate the original or re-established location of this corner:

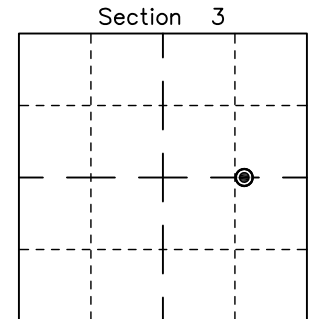
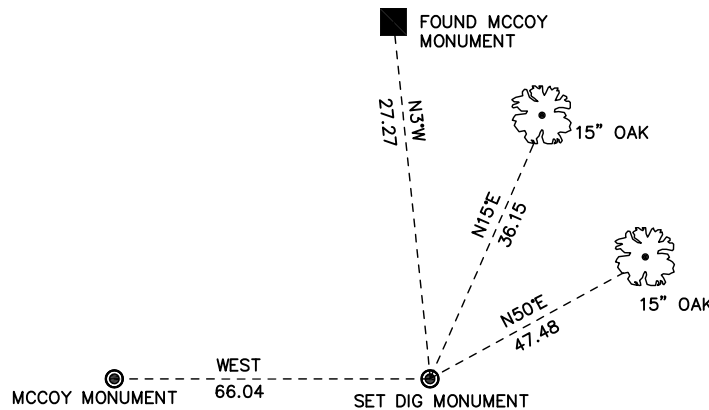
Witnesses to corner location:

Nick Hillmer
Josh Oslund
Dan Greenwald

MONROE COUNTY
 COORDINATE SYSTEM
 NAD 1983 (2007)

MCCOY DIG MONUMENT
 Northing (Y) 392107.80
 Easting (X) 682791.44

Base Station - 22 182W
 Northing (Y) 408053.25
 Easting (X) 679287.00



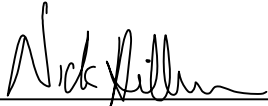
⊙ = LOCATION CORNER
 Corner I.D. 66' EAST OF
CE 1/16 3
 T 17 N R 2 W
 Town of Adrian
 Monroe County, WI.

All distances are shown in U.S. Survey Feet.
 Ties are to 60D nails set in trees.
 Bearings are for tie reference purposes only.
 Coordinates were derived from RTK GNSS procedures.

CERTIFICATE

I, Nicholas M. Hillmer, do hereby certify that this document and the data contained herein was prepared by me or under my direct supervision and that I am a duly Licensed Land Surveyor under the laws of the State of Wisconsin.

Dated this 21st day of May, 2013



Nicholas M. Hillmer, P.L.S. 2909
Anderson Engineering of Minnesota, LLC.

CERTIFIED LAND CORNER

History of corner established since Original Government Survey

The 1940's McCoy boundary notes show a corner at this location.

Description of evidence found

No evidence of the McCoy monument was found. On May 8th, 2013, Anderson Engineering of Minnesota set a 30 inch Berntsen aluminum dig monument with a 3 1/4 inch aluminum cap, stamped "FORT MCCOY BOUNDARY" "2013" "ANDERSON ENG. OF MN." The monument is set midway online between the east quarter corner and the center of Section 3.

No. 21702032010

Description of corner and witness monuments, references and accessories used to perpetuate the original or re-established location of this corner:

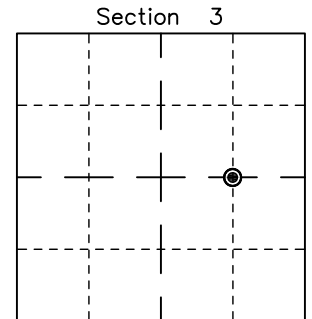
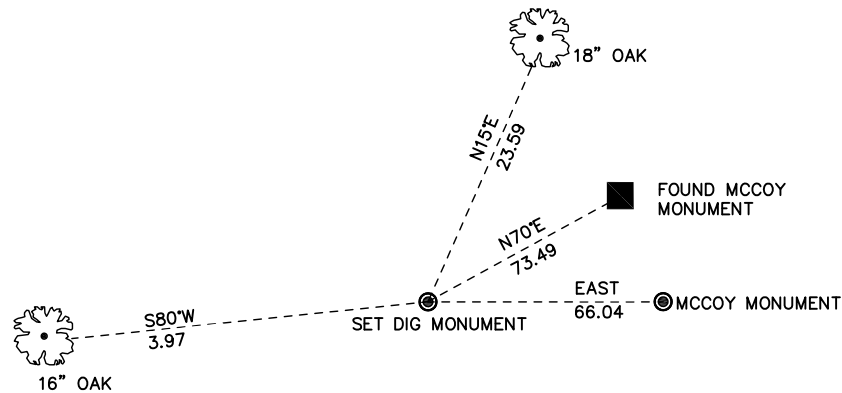
Witnesses to corner location:

Nick Hillmer
Josh Oslund
Dan Greenwald

MONROE COUNTY
COORDINATE SYSTEM
NAD 1983 (2007)

MCCOY DIG MONUMENT
Northing (Y) 392106.26
Easting (X) 682725.39

Base Station - 22 182W
Northing (Y) 408053.25
Easting (X) 679287.00



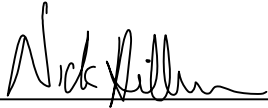
⊙ = LOCATION CORNER
Corner I.D. CE 1/16 3
T 17 N R 2 W
Town of Adrian
Monroe County, WI.

All distances are shown in U.S. Survey Feet.
Ties are to 60D nails set in trees.
Bearings are for tie reference purposes only.
Coordinates were derived from RTK GNSS procedures.

CERTIFICATE

I, Nicholas M. Hillmer, do hereby certify that this document and the data contained herein was prepared by me or under my direct supervision and that I am a duly Licensed Land Surveyor under the laws of the State of Wisconsin.

Dated this 21st day of May, 2013



Nicholas M. Hillmer, P.L.S. 2909
Anderson Engineering of Minnesota, LLC.

CERTIFIED LAND CORNER

History of corner established since Original Government Survey

The 1940's McCoy boundary notes show a corner at this location.

Description of evidence found

On September 27th, 2012, Anderson Engineering of Minnesota located the McCoy monument, a 4 inch U.S. Army Corps of Engineers survey control mark disk set in concrete 0.4 feet above grade. The monument is 1.0 feet east of a corner post of a barbed wire fence that runs south and east. The monument is accepted as the best available evidence.

No. 21702031020

Description of corner and witness monuments, references and accessories used to perpetuate the original or re-established location of this corner:

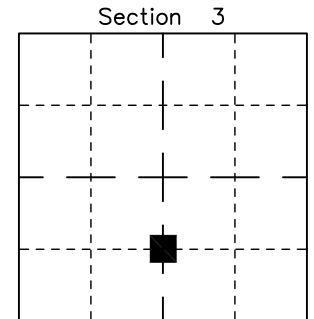
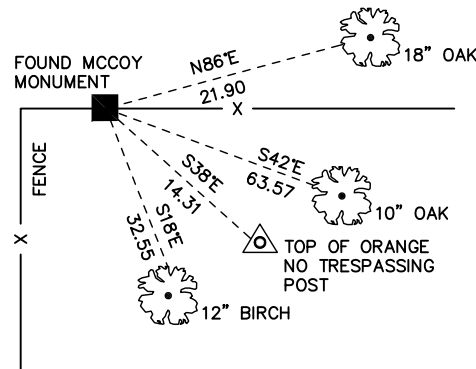
Witnesses to corner location:

Nick Hillmer
Josh Oslund
Dan Greenwald

MONROE COUNTY
COORDINATE SYSTEM
NAD 1983 (2007)

MCCOY MONUMENT
Northing (Y) 390767.37
Easting (X) 681386.51

Base Station - 22 182W
Northing (Y) 408053.25
Easting (X) 679287.00



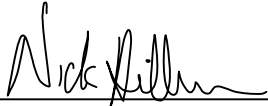
■ = LOCATION CORNER
Corner I.D. CS 1/16 3
T 17 N R 2 W
Town of Adrian
Monroe County, WI.

All distances are shown in U.S. Survey Feet.
Ties are to 60D nails set in trees.
Bearings are for tie reference purposes only.
Coordinates were derived from RTK GNSS procedures.

CERTIFICATE

I, Nicholas M. Hillmer, do hereby certify that this document and the data contained herein was prepared by me or under my direct supervision and that I am a duly Licensed Land Surveyor under the laws of the State of Wisconsin.

Dated this 21st day of May, 2013



Nicholas M. Hillmer, P.L.S. 2909
Anderson Engineering of Minnesota, LLC.

CERTIFIED LAND CORNER

History of corner established since Original Government Survey

The 1940's McCoy boundary notes show a corner at this location.

Description of evidence found

On September 27th, 2012, Anderson Engineering of Minnesota located the McCoy monument, a 4 inch U.S. Army Corps of Engineers survey control mark disk set in concrete. The monument was not accepted as the corner. On May 8th, 2013, Anderson Engineering of Minnesota set a 30 inch Berntsen aluminum dig monument with a 3 1/4 inch aluminum cap, stamped "FORT MCCOY BOUNDARY" "2013" "ANDERSON ENG. OF MN." The monument is set on the north-south quarter line (40 rods) (660 feet) north of the south quarter corner per the legal description of record book 104 page 248.

No. 21702030520

Description of corner and witness monuments, references and accessories used to perpetuate the original or re-established location of this corner:

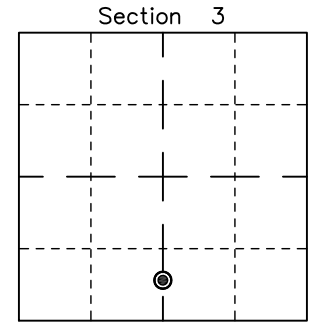
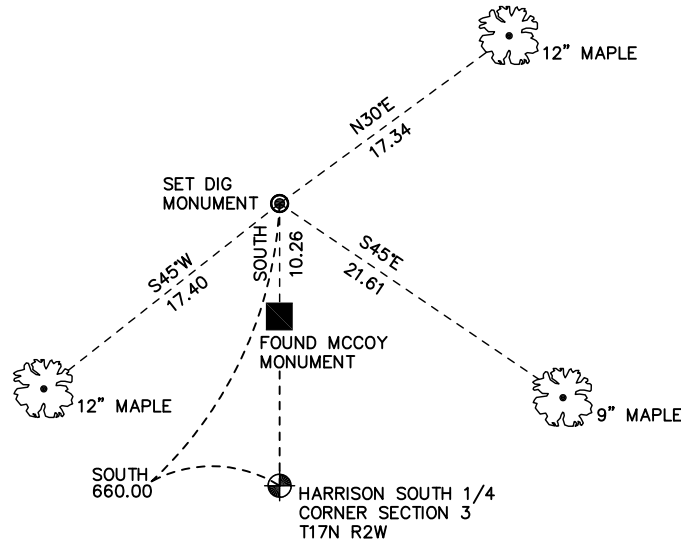
Witnesses to corner location:

Nick Hillmer
Josh Oslund
Dan Greenwald

MONROE COUNTY
COORDINATE SYSTEM
NAD 1983 (2007)

MCCOY DIG MONUMENT
Northing (Y) 390118.80
Easting (X) 681368.39

Base Station - 22 182W
Northing (Y) 408053.25
Easting (X) 679287.00



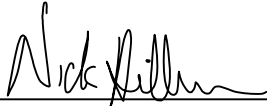
⊙ = LOCATION CORNER
Corner I.D. CSS 1/64 3
T 17 N R 2 W
Town of Adrian
Monroe County, WI.

All distances are shown in U.S. Survey Feet.
Ties are to 60D nails set in trees.
Bearings are for tie reference purposes only.
Coordinates were derived from RTK GNSS procedures.

CERTIFICATE

I, Nicholas M. Hillmer, do hereby certify that this document and the data contained herein was prepared by me or under my direct supervision and that I am a duly Licensed Land Surveyor under the laws of the State of Wisconsin.

Dated this 21st day of May, 2013



Nicholas M. Hillmer, P.L.S. 2909
Anderson Engineering of Minnesota, LLC.

CERTIFIED LAND CORNER

No. 21702030027.5

History of corner established since Original Government Survey

The 1940's McCoy boundary notes show a corner at this location. This monument was utilized by Bryan Meyer in 1997 to re-establish the south quarter corner of Section 3.

Description of evidence found

On September 27th, 2012, Anderson Engineering of Minnesota located the McCoy monument, a 4 inch U.S. Army Corps of Engineers survey control mark disk set in concrete 0.7 feet above grade. The concrete is stamped US on the east side. The monument is 1.5 feet west of a corner post of a barbed wire fence that runs south and northeast. The monument is accepted as the best available evidence.

Description of corner and witness monuments, references and accessories used to perpetuate the original or re-established location of this corner:

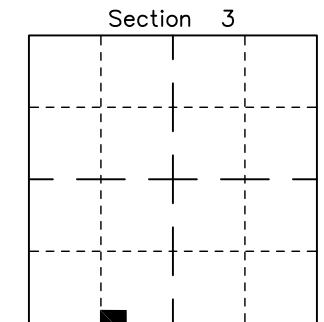
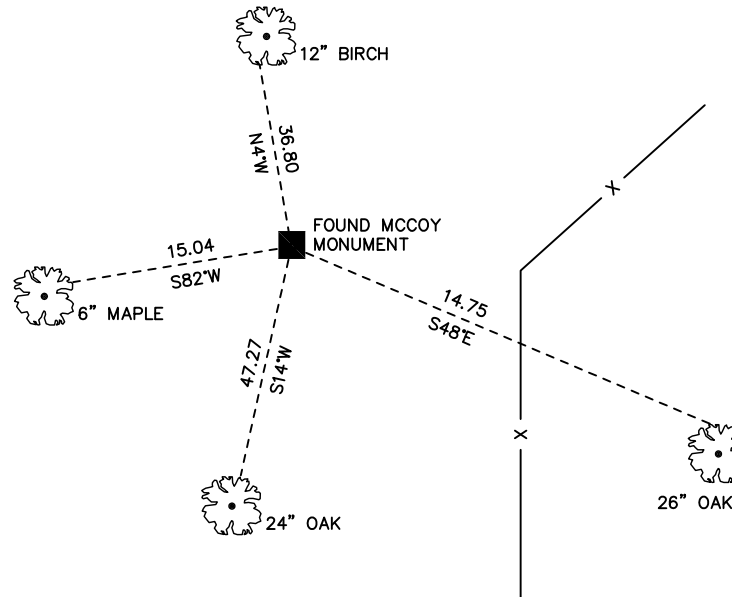
Witnesses to corner location:

Nick Hillmer
Josh Oslund
Dan Greenwald

MONROE COUNTY
COORDINATE SYSTEM
NAD 1983 (2007)

MCCOY MONUMENT
Northing (Y) 389442.78
Easting (X) 680360.12

Base Station - 22 182W
Northing (Y) 408053.25
Easting (X) 679287.00



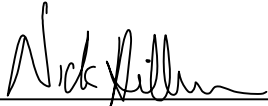
■ = LOCATION CORNER
Corner I.D. WEW 1/256 3
T 17 N R 2 W
Town of Adrian
Monroe County, WI.

All distances are shown in U.S. Survey Feet.
Ties are to 60D nails set in trees.
Bearings are for tie reference purposes only.
Coordinates were derived from RTK GNSS procedures.

CERTIFICATE

I, Nicholas M. Hillmer, do hereby certify that this document and the data contained herein was prepared by me or under my direct supervision and that I am a duly Licensed Land Surveyor under the laws of the State of Wisconsin.

Dated this 21st day of May, 2013



Nicholas M. Hillmer, P.L.S. 2909
Anderson Engineering of Minnesota, LLC.

CERTIFIED LAND CORNER

History of corner established since Original Government Survey

The 1940's McCoy boundary notes show a corner at this location.

Description of evidence found

On October 30th, 2012, Anderson Engineering of Minnesota found the McCoy monument, a 4 inch U.S. Army Corps of Engineers survey control mark disk set in concrete 1.0 foot above grade. The monument was not accepted as the corner. On May 8, 2013, Anderson Engineering of Minnesota set a 30" Berntsen aluminum dig monument with a 3 1/4 inch aluminum cap, stamped "FORT MCCOY BOUNDARY" "2013" "ANDERSON ENG. OF MN." The monument is set at the intersection of the east-west quarter line, and the extension of the two McCoy monuments to the north.

No. _____
[]

Description of corner and witness monuments, references and accessories used to perpetuate the original or re-established location of this corner:

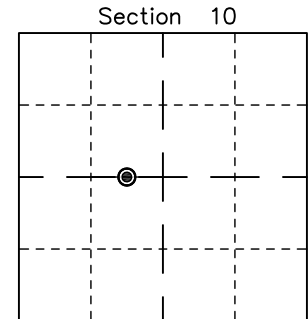
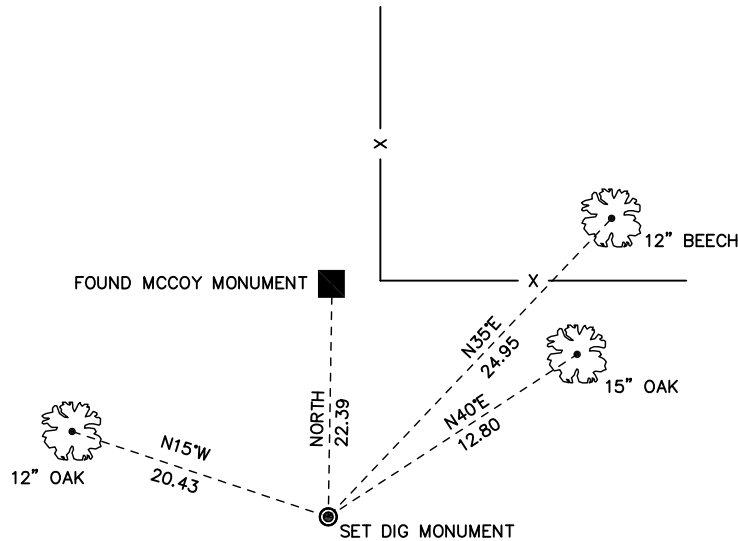
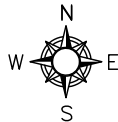
Witnesses to corner location:

Nick Hillmer
Josh Oslund
Dan Greenwald

MONROE COUNTY
COORDINATE SYSTEM
NAD 1983 (2007)

MCCOY DIG MONUMENT
Northing (Y) 386837.74
Easting (X) 680393.23

Base Station - 22 182W
Northing (Y) 408053.25
Easting (X) 679287.00



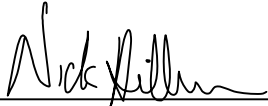
⊙ = LOCATION CORNER
Corner I.D. SE COR OF
THE WEST 20 ACRES OF
THE EAST HALF OF THE
NORTHWEST QUARTER
T 17 N R 2 W
Town of Adrian
Monroe County, WI.

All distances shown in U.S. Survey Feet.
All ties are 60D Nails.
Bearings are for tie reference purposes only.
Coordinates derived from RTK GNSS procedures.

CERTIFICATE

I, Nicholas M. Hillmer, do hereby certify that this document and the data contained herein was prepared by me or under my direct supervision and that I am a duly Licensed Land Surveyor under the laws of the State of Wisconsin.

Dated this 21st day of May, 2013



Nicholas M. Hillmer, P.L.S. 2909
Anderson Engineering of Minnesota, LLC.

CERTIFIED LAND CORNER

History of corner established since Original Government Survey

Kenyon was at this corner in December of 1886. The 1940's McCoy boundary notes show a corner at this location. In December of 1982, William Jung found a McCoy boundary monument and accepted it as the corner.

Description of evidence found

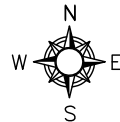
On August 30th, 2012, Anderson Engineering of Minnesota located the McCoy monument, a 4 inch U.S. Army Corps of Engineers survey control mark disk set in concrete 0.7 feet above grade. The concrete is marked U.S on the south side.

No. 21702092000

Description of corner and witness monuments, references and accessories used to perpetuate the original or re-established location of this corner:

Witnesses to corner location:

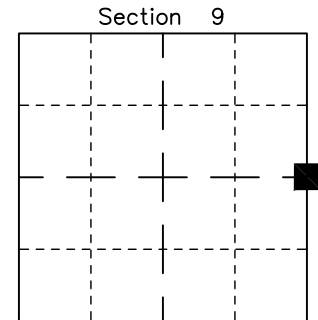
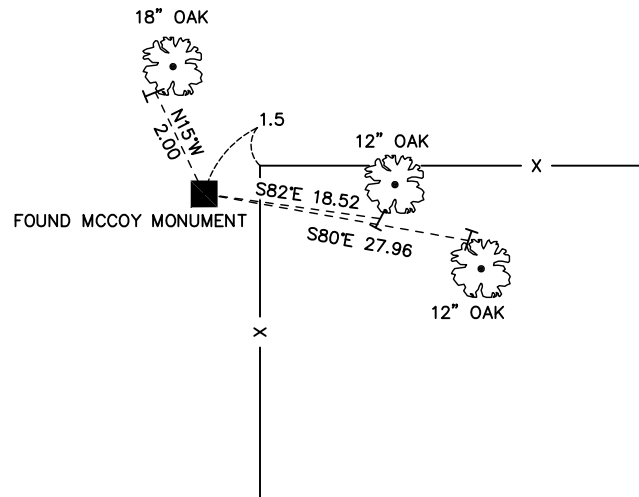
Nick Hillmer
Josh Oslund
Dan Greenwald



MONROE COUNTY
COORDINATE SYSTEM
NAD 1983 (2007)

MCCOY MONUMENT
Northing (Y) 386818.49
Easting (X) 678788.72

Base Station - 22 182W
Northing (Y) 408053.25
Easting (X) 679287.00



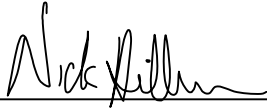
■ = LOCATION CORNER
Corner I.D. E 1/4 9
T 17 N R 2 W
Town of Adrian
Monroe County, WI.

All distances are shown in U.S. Survey Feet.
Ties are to 60D nails set in trees.
Bearings are for tie reference purposes only.
Coordinates were derived from RTK GNSS procedures.

CERTIFICATE

I, Nicholas M. Hillmer, do hereby certify that this document and the data contained herein was prepared by me or under my direct supervision and that I am a duly Licensed Land Surveyor under the laws of the State of Wisconsin.

Dated this 21st day of May, 2013



Nicholas M. Hillmer, P.L.S. 2909
Anderson Engineering of Minnesota, LLC.

CERTIFIED LAND CORNER

History of corner established since Original Government Survey

The 1940's McCoy boundary notes show a corner at this location. In December of 1982 William Jung found a broken McCoy concrete marker and a wood witness post. Jung was able to determine the location of the old concrete marker and set a Harrison monument. Jung states this position fits the occupied conditions very well.

No. 21702090000

Description of evidence found

On October 29th, 2012, Anderson Engineering of Minnesota located the Harrison monument 0.2 feet above grade.

Description of corner and witness monuments, references and accessories used to perpetuate the original or re-established location of this corner:

Witnesses to corner location:

Nick Hillmer
Josh Oslund
Dan Greenwald

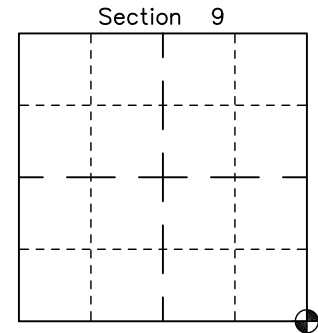
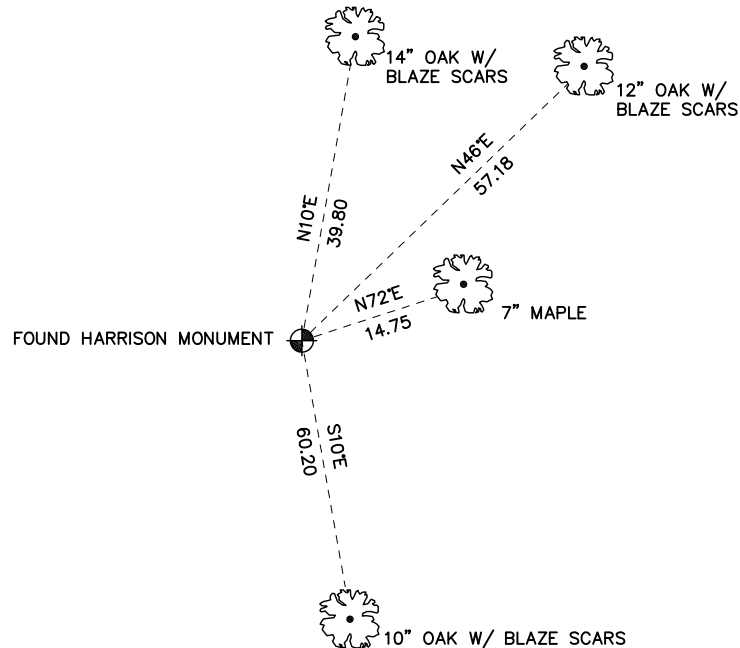
MONROE COUNTY
COORDINATE SYSTEM
NAD 1983 (2007)

HARRISON MONUMENT
Northing (Y) 384186.29
Easting (X) 678813.78

Base Station - 22 182W
Northing (Y) 408053.25
Easting (X) 679287.00



All distances are shown in U.S. Survey Feet.
Ties are to 60D nails set in trees.
Bearings are for tie reference purposes only.
Coordinates were derived from RTK GNSS procedures.

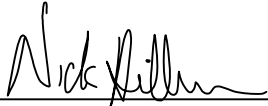


⊕ = LOCATION CORNER
Corner I.D. SE 9
T 17 N R 2 W
Town of Adrian
Monroe County, WI.

CERTIFICATE

I, Nicholas M. Hillmer, do hereby certify that this document and the data contained herein was prepared by me or under my direct supervision and that I am a duly Licensed Land Surveyor under the laws of the State of Wisconsin.

Dated this 21st day of May, 2013



Nicholas M. Hillmer, P.L.S. 2909
Anderson Engineering of Minnesota, LLC.

CERTIFIED LAND CORNER

History of corner established since Original Government Survey

The 1940's McCoy boundary notes show a corner at this location. In August of 1980 Harley Sime found and accepted a McCoy boundary marker as the corner.

No. 21702100020

Description of evidence found

On September 28th, 2012, Anderson Engineering of Minnesota located the McCoy monument, a 4 inch U.S. Army Corps of Engineers survey control mark disk set in concrete 0.9 feet above grade.

Description of corner and witness monuments, references and accessories used to perpetuate the original or re-established location of this corner:

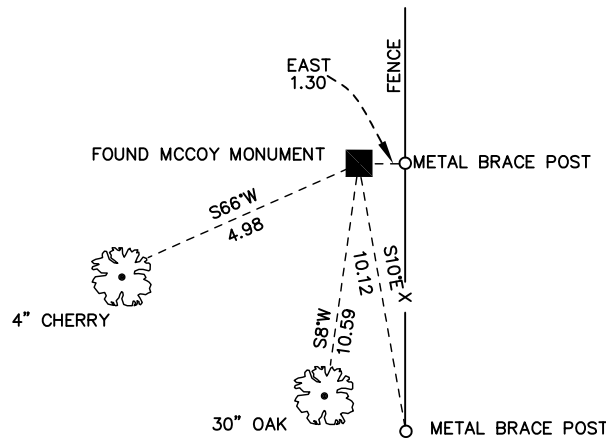
Witnesses to corner location:

Nick Hillmer
Josh Oslund
Dan Greenwald

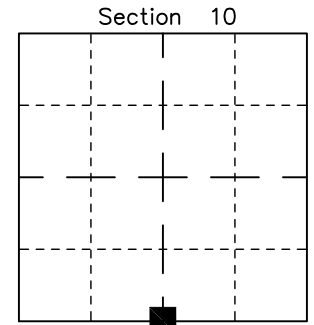
MONROE COUNTY
COORDINATE SYSTEM
NAD 1983 (2007)

MCCOY MONUMENT
Northing (Y) 384197.66
Easting (X) 681408.83

Base Station - 22 182W
Northing (Y) 408053.25
Easting (X) 679287.00



All distances are shown in U.S. Survey Feet.
Ties are to 60D nails set in trees.
Bearings are for tie reference purposes only.
Coordinates were derived from RTK GNSS procedures.

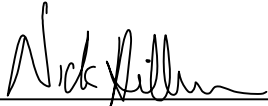


■ = LOCATION CORNER
Corner I.D. S 1/4 10
T 17 N R 2 W
Town of Adrian
Monroe County, WI.

CERTIFICATE

I, Nicholas M. Hillmer, do hereby certify that this document and the data contained herein was prepared by me or under my direct supervision and that I am a duly Licensed Land Surveyor under the laws of the State of Wisconsin.

Dated this 21st day of May, 2013



Nicholas M. Hillmer, P.L.S. 2909
Anderson Engineering of Minnesota, LLC.

CERTIFIED LAND CORNER

History of corner established since Original Government Survey

The 1940's McCoy boundary notes show a corner at this location.

Description of evidence found

On September 28th, 2012, Anderson Engineering of Minnesota located the McCoy monument, a 4 inch U.S. Army Corps of Engineers survey control mark disc set in concrete 0.6 feet above grade. No recorded history of this monument being perpetuated or utilized in subsequent surveys. The monument was not accepted as the corner. On April 24th, 2013, Anderson Engineering of Minnesota set a 30 inch Berntsen aluminum dig monument with a 3 1/4 inch aluminum cap, stamped "FORT MCCOY BOUNDARY" "2013" "ANDERSON ENG. OF MN." The monument is set midway online between the north quarter corner and center of Section 15.

No. 21702153020

Description of corner and witness monuments, references and accessories used to perpetuate the original or re-established location of this corner:

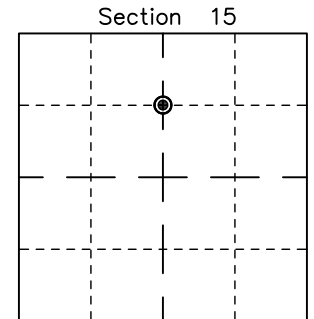
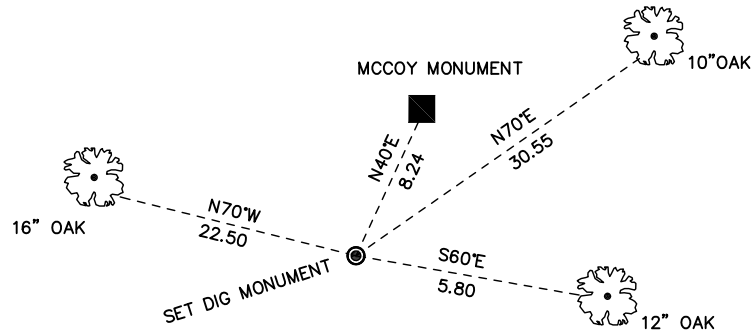
Witnesses to corner location:

Nick Hillmer
Josh Oslund
Dan Greenwald

MONROE COUNTY
COORDINATE SYSTEM
NAD 1983 (2007)

MCCOY DIG MONUMENT
Northing (Y) 382881.57
Easting (X) 681425.50

Base Station - 22 182W
Northing (Y) 408053.25
Easting (X) 679287.00



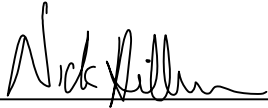
⊙ = LOCATION CORNER
Corner I.D. CN 1/16 15
T 17 N R 2 W
Town of Adrian
Monroe County, WI.

All distances are shown in U.S. Survey Feet.
Ties are to 60D nails set in trees.
Bearings are for tie reference purposes only.
Coordinates were derived from RTK GNSS procedures.

CERTIFICATE

I, Nicholas M. Hillmer, do hereby certify that this document and the data contained herein was prepared by me or under my direct supervision and that I am a duly Licensed Land Surveyor under the laws of the State of Wisconsin.

Dated this 21st day of May, 2013



Nicholas M. Hillmer, P.L.S. 2909
Anderson Engineering of Minnesota, LLC.

CERTIFIED LAND CORNER

History of corner established since Original Government Survey

The 1940's McCoy boundary notes show a corner at this location.

Description of evidence found

No evidence of the McCoy monument was found. On April 8th, 2013, Anderson Engineering of Minnesota located a 1 1/4 inch round bar 0.2 feet above grade near the corners location. No recorded history of this monument could be found. On April 22nd, 2013, Anderson Engineering of Minnesota set a 30 inch Berntsen aluminum dig monument with a 3 1/4 inch aluminum cap, stamped "FORT MCCOY BOUNDARY" "2013" "ANDERSON ENG. OF MN." The monument is set at the legal position per the section breakdown.

No. 21702153030

Description of corner and witness monuments, references and accessories used to perpetuate the original or re-established location of this corner:

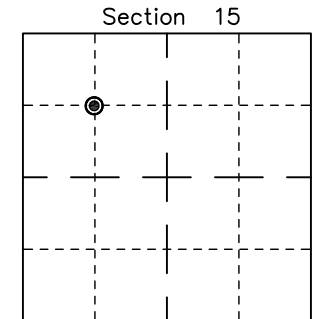
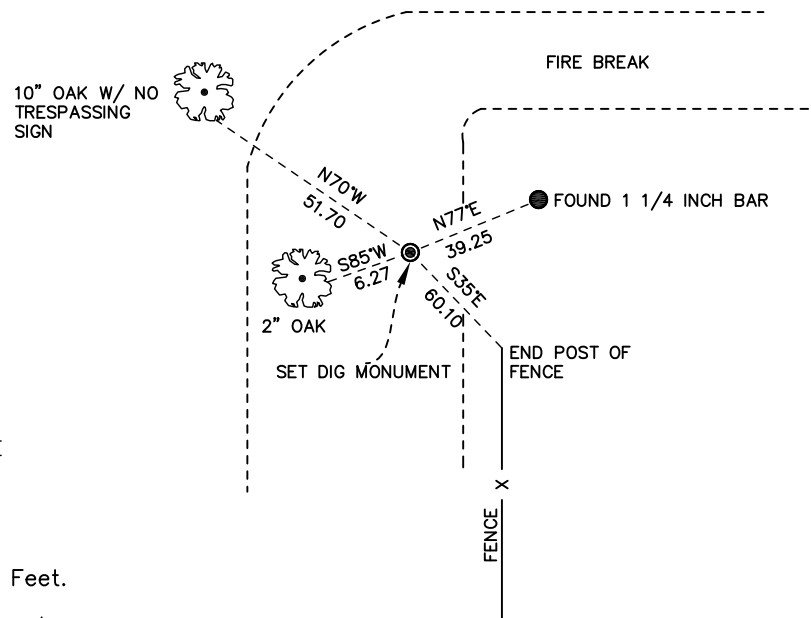
Witnesses to corner location:

Nick Hillmer
Josh Oslund
Dan Greenwald

MONROE COUNTY
COORDINATE SYSTEM
NAD 1983 (2007)

MCCOY DIG MONUMENT
Northing (Y) 382869.48
Easting (X) 680129.72

Base Station - 22 182W
Northing (Y) 408053.25
Easting (X) 679287.00



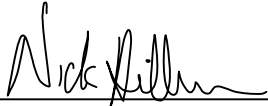
● = LOCATION CORNER
Corner I.D. NW 1/16 15
T 17 N R 2 W
Town of Adrian
Monroe County, WI.

All distances are shown in U.S. Survey Feet.
Ties are to 60D nails set in trees.
Bearings are for tie reference purposes only.
Coordinates were derived from RTK GNSS procedures.

CERTIFICATE

I, Nicholas M. Hillmer, do hereby certify that this document and the data contained herein was prepared by me or under my direct supervision and that I am a duly Licensed Land Surveyor under the laws of the State of Wisconsin.

Dated this 21st day of May, 2013



Nicholas M. Hillmer, P.L.S. 2909
Anderson Engineering of Minnesota, LLC.

CERTIFIED LAND CORNER

History of corner established since Original Government Survey

The 1940's McCoy boundary notes show a corner at this location.

Description of evidence found

On September 28th, 2012, Anderson Engineering of Minnesota located the McCoy monument, a 4 inch U.S. Army Corps of Engineers survey control mark disk set in concrete near the corners location. No recorded history of the monument being perpetuated or utilized in subsequent surveys. The monument was not accepted as the corner. On April 24th, 2013, Anderson Engineering of Minnesota set a 30 inch Berntsen aluminum dig monument with a 3 1/4 inch aluminum cap, stamped "FORT MCCOY BOUNDARY" "2013" "ANDERSON ENG. OF MN." The monument is set midway online between the west quarter corner and center of Section 15.

No. 21702152030

Description of corner and witness monuments, references and accessories used to perpetuate the original or re-established location of this corner:

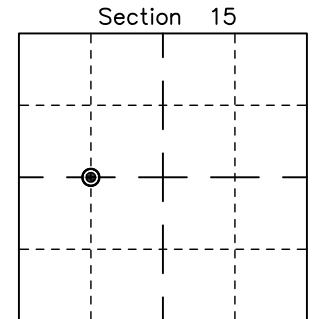
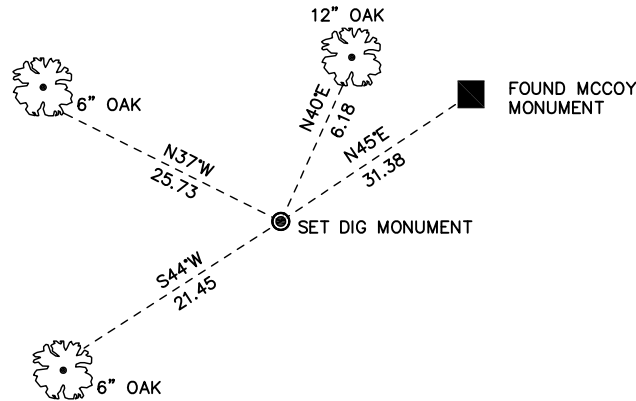
Witnesses to corner location:

Nick Hillmer
Josh Oslund
Dan Greenwald

MONROE COUNTY
COORDINATE SYSTEM
NAD 1983 (2007)

MCCOY DIG MONUMENT
Northing (Y) 381547.00
Easting (X) 680148.14

Base Station - 22 182W
Northing (Y) 408053.25
Easting (X) 679287.00



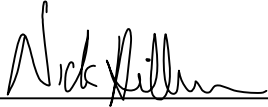
● = LOCATION CORNER
Corner I.D. CW 1/16 15
T 17 N R 2 W
Town of Adrian
Monroe County, WI.

All distances are shown in U.S. Survey Feet.
Ties are to 60D nails set in trees.
Bearings are for tie reference purposes only.
Coordinates were derived from RTK GNSS procedures.

CERTIFICATE

I, Nicholas M. Hillmer, do hereby certify that this document and the data contained herein was prepared by me or under my direct supervision and that I am a duly Licensed Land Surveyor under the laws of the State of Wisconsin.

Dated this 21st day of May, 2013



Nicholas M. Hillmer, P.L.S. 2909
Anderson Engineering of Minnesota, LLC.

CERTIFIED LAND CORNER

History of corner established since Original Government Survey

The McCoy boundary notes show a corner at this location. On August 9, 1977, Harley Sime, Darwin Dade, and Brian Meyer met a crew from Fort McCoy at the corner location. The McCoy crew was composed of Bob Mattison, back-hoe operator, and Robert Nichols from the base engineering department. They dug for the old concrete marker, but could not find it. The Harrison monument was set using the McCoy boundary field notes. The location was accepted by Robert Nichols.

Description of evidence found

On September 28th, 2012, Anderson Engineering of Minnesota located the Harrison monument 0.4 feet below grade and 0.8 feet north of a witness post with a survey marker sign. The monument is 32+/- feet south of the centerline of the road.

No. 21702162000

Description of corner and witness monuments, references and accessories used to perpetuate the original or re-established location of this corner:

Witnesses to corner location:

Nick Hillmer
Josh Oslund
Dan Greenwald

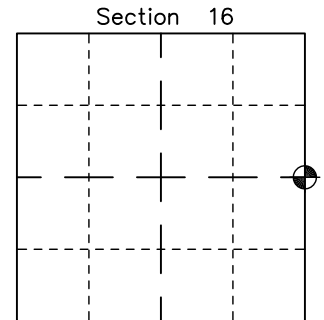
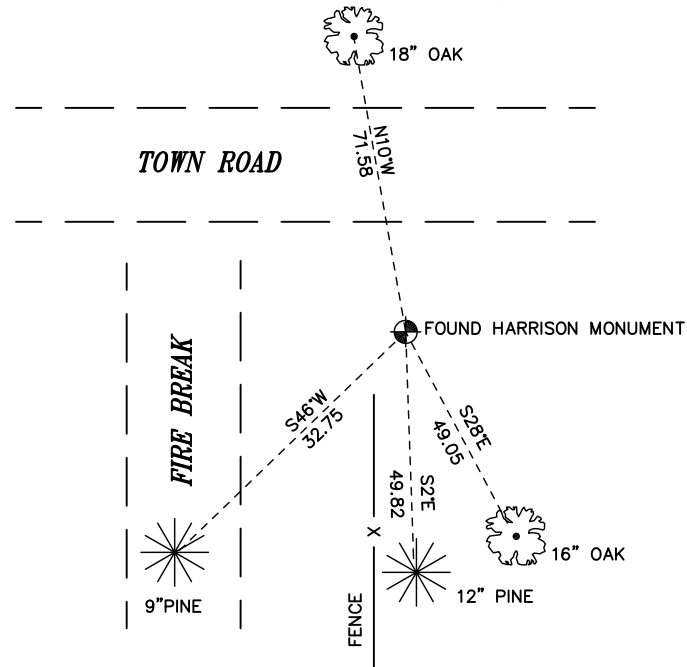
MONROE COUNTY
COORDINATE SYSTEM
NAD 1983 (2007)

HARRISON MONUMENT
Northing (Y) 381528.51
Easting (X) 678854.12

Base Station - 22 182W
Northing (Y) 408053.25
Easting (X) 679287.00



All distances are shown in U.S. Survey Feet.
Ties are to 60D nails set in trees.
Bearings are for tie reference purposes only.
Coordinates were derived from RTK GNSS procedures.

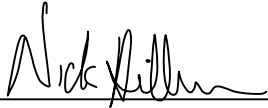


● = LOCATION CORNER
Corner I.D. E 1/4 16
T 17 N R 2 W
Town of Adrian
Monroe County, WI.

CERTIFICATE

I, Nicholas M. Hillmer, do hereby certify that this document and the data contained herein was prepared by me or under my direct supervision and that I am a duly Licensed Land Surveyor under the laws of the State of Wisconsin.

Dated this 21st day of May, 2013



Nicholas M. Hillmer, P.L.S. 2909
Anderson Engineering of Minnesota, LLC.

CERTIFIED LAND CORNER

History of corner established since Original Government Survey

The 1940's McCoy boundary notes show a fence corner at this location. In June of 1992 Gary Dechant found and accepted the fence corner as the best available evidence. Dechant set a Harrison monument.

Description of evidence found

On August 15th, 2012, Anderson Engineering of Minnesota located the Harrison monument 2 inches above grade and 1 foot west of the intersection of a fence running north-south and east.

No. 21702160000

Description of corner and witness monuments, references and accessories used to perpetuate the original or re-established location of this corner:

Witnesses to corner location:

Nick Hillmer
Josh Oslund
Dan Greenwald

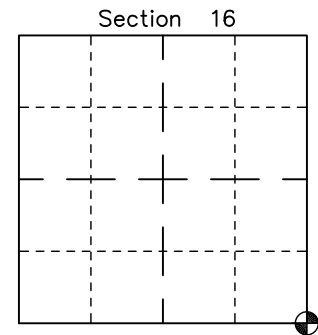
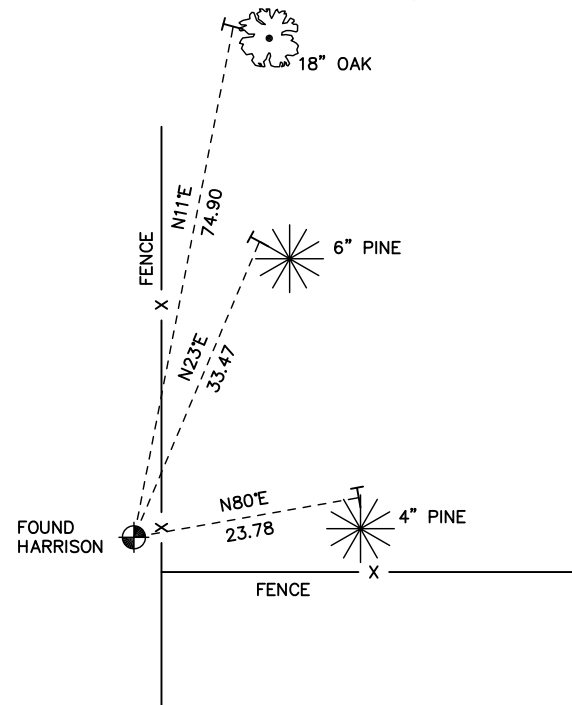


MONROE COUNTY
COORDINATE SYSTEM
NAD 1983 (2007)

HARRISON MONUMENT
Northing (Y) 378933.14
Easting (X) 678895.46

Base Station - 22 182W
Northing (Y) 408053.25
Easting (X) 679287.00

All distances are shown in U.S. Survey Feet.
Ties are to 60D nails set in trees.
Bearings are for tie reference purposes only.
Coordinates were derived from RTK GNSS procedures.

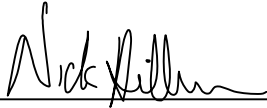


⊙ = LOCATION CORNER
Corner I.D. SE 16
T 17 N R 2 W
Town of Adrian
Monroe County, WI.

CERTIFICATE

I, Nicholas M. Hillmer, do hereby certify that this document and the data contained herein was prepared by me or under my direct supervision and that I am a duly Licensed Land Surveyor under the laws of the State of Wisconsin.

Dated this 21st day of May, 2013



Nicholas M. Hillmer, P.L.S. 2909
Anderson Engineering of Minnesota, LLC.

CERTIFIED LAND CORNER

History of corner established since Original Government Survey

The McCoy boundary notes show a fence corner at this location. In June of 1992, Gary Dechant found and accepted the remains of an old fence corner as the best available evidence. Dechant set a Harrison monument at the location.

No. _____
21702212000

Description of evidence found

On October 30th, 2012, Anderson Engineering of Minnesota located the Harrison monument 0.3 feet above grade and 1.0 foot north of a witness post with a survey marker sign.

Description of corner and witness monuments, references and accessories used to perpetuate the original or re-established location of this corner:

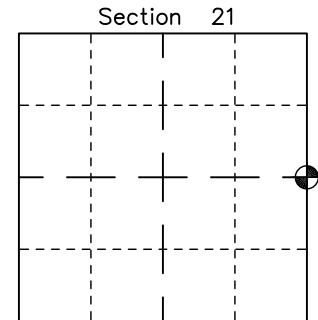
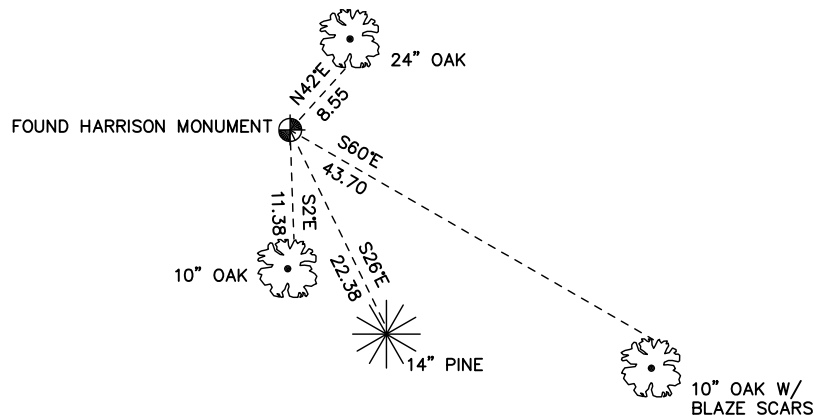
Witnesses to corner location:

Nick Hillmer
Josh Oslund
Dan Greenwald

MONROE COUNTY
COORDINATE SYSTEM
NAD 1983 (2007)

HARRISON MONUMENT
Northing (Y) 376331.06
Easting (X) 678893.46

Base Station - 22 182W
Northing (Y) 408053.25
Easting (X) 679287.00



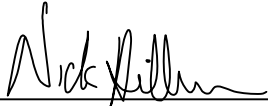
⊙ = LOCATION CORNER
Corner I.D. E 1/4 21
T 17 N R 2 W
Town of Adrian
Monroe County, WI.

All distances are shown in U.S. Survey Feet.
Ties are to 60D nails set in trees.
Bearings are for tie reference purposes only.
Coordinates were derived from RTK GNSS procedures.

CERTIFICATE

I, Nicholas M. Hillmer, do hereby certify that this document and the data contained herein was prepared by me or under my direct supervision and that I am a duly Licensed Land Surveyor under the laws of the State of Wisconsin.

Dated this 21st day of May, 2013



Nicholas M. Hillmer, P.L.S. 2909
Anderson Engineering of Minnesota, LLC.

CERTIFIED LAND CORNER

History of corner established since Original Government Survey

The 1940's McCoy boundary notes show a corner at this location.

Description of evidence found

On October 21st, 2012, Anderson Engineering of Minnesota located the McCoy monument, a 4 inch U.S. Army Corps of Engineers survey control mark disk stamped MCCOY BOUNDARY set in concrete. No recorded history of this monument being perpetuated or utilized in subsequent surveys. The monument was not accepted as the corner. On April 22, 2013, Anderson Engineering of Minnesota set a 30 inch Berntsen aluminum dig monument with a 3 1/4 inch aluminum cap, stamped "FORT MCCOY BOUNDARY" "2013" "ANDERSON ENG. OF MN." The monument is set midway online between the east quarter corner and the southeast corner of Section 21.

No. _____
21702211000

Description of corner and witness monuments, references and accessories used to perpetuate the original or re-established location of this corner:

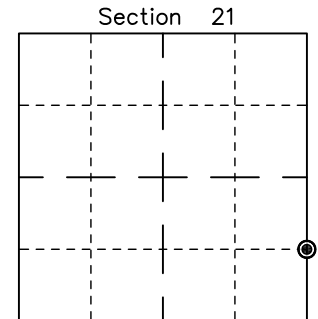
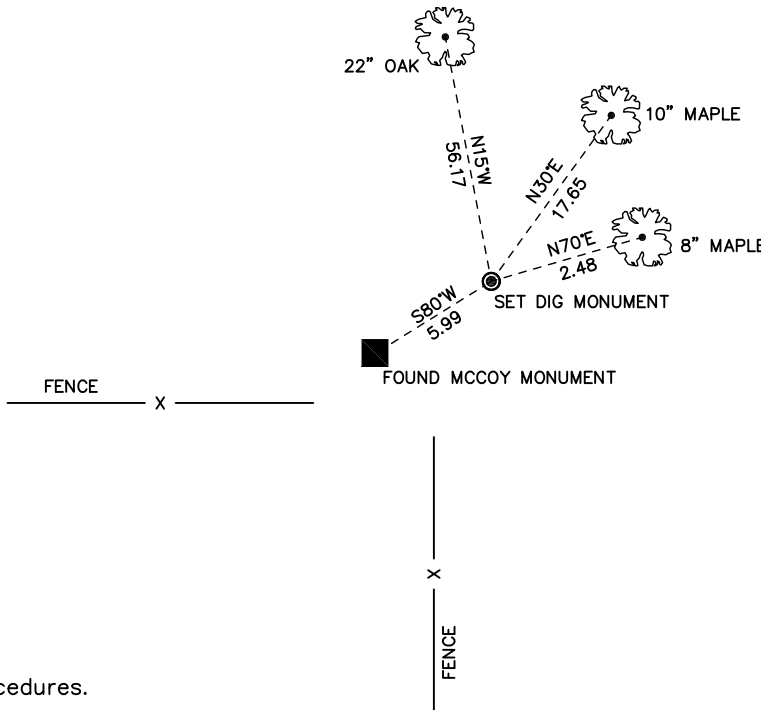
Witnesses to corner location:

Nick Hillmer
Josh Oslund
Dan Greenwald

MONROE COUNTY
COORDINATE SYSTEM
NAD 1983 (2007)

MCCOY DIG MONUMENT
Northing (Y) 375027.84
Easting (X) 678889.91

Base Station - 22 182W
Northing (Y) 408053.25
Easting (X) 679287.00



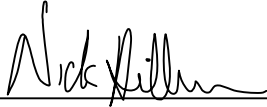
⊙ = LOCATION CORNER
Corner I.D. S 1/16 21
T 17 N R 2 W
Town of Adrian
Monroe County, WI.

All distances are shown in U.S. Survey Feet.
Ties are to 60D nails set in trees.
Bearings are for tie reference purposes only.
Coordinates were derived from RTK GNSS procedures.

CERTIFICATE

I, Nicholas M. Hillmer, do hereby certify that this document and the data contained herein was prepared by me or under my direct supervision and that I am a duly Licensed Land Surveyor under the laws of the State of Wisconsin.

Dated this 21st day of May, 2013



Nicholas M. Hillmer, P.L.S. 2909
Anderson Engineering of Minnesota, LLC.

CERTIFIED LAND CORNER

History of corner established since Original Government Survey

The 1940's McCoy boundary notes show a corner at this location.

Description of evidence found

On October 30, 2012, Anderson Engineering of Minnesota located the McCoy monument, a 4 inch U.S. Army Corps of Engineers survey control mark disk set in concrete 0.2 feet below grade and 1.75 feet southeast of a wood fence corner post. The monument is believed to be set based on fence line occupation and is accepted as the best available evidence.

No. 21702211010

Description of corner and witness monuments, references and accessories used to perpetuate the original or re-established location of this corner:

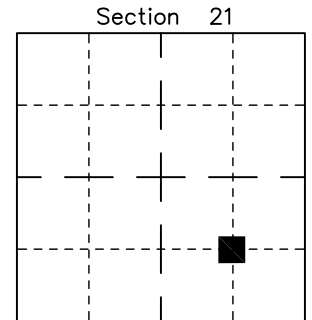
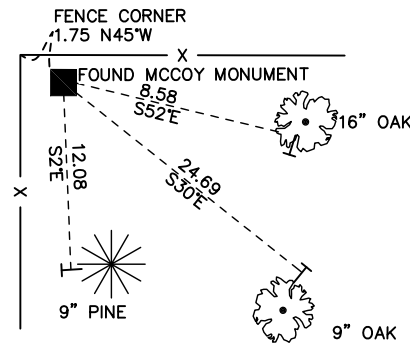
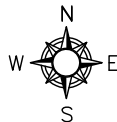
Witnesses to corner location:

Nick Hillmer
Josh Oslund
Dan Greenwald

MONROE COUNTY
COORDINATE SYSTEM
NAD 1983 (2007)

MCCOY MONUMENT
Northing (Y) 374994.31
Easting (X) 677576.15

Base Station - 22 182W
Northing (Y) 408053.25
Easting (X) 679287.00



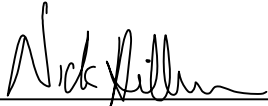
■ = LOCATION CORNER
Corner I.D. SE 1/16 21
T 17 N R 2 W
Town of Adrian
Monroe County, WI.

All distances shown in U.S. Survey Feet.
Ties are made to 60 D Nails set in trees.
Bearings are for tie reference purposes only.
Coordinates derived from RTK GNSS procedures.

CERTIFICATE

I, Nicholas M. Hillmer, do hereby certify that this document and the data contained herein was prepared by me or under my direct supervision and that I am a duly Licensed Land Surveyor under the laws of the State of Wisconsin.

Dated this 21st day of May, 2013



Nicholas M. Hillmer, P.L.S. 2909
Anderson Engineering of Minnesota, LLC.

CERTIFIED LAND CORNER

History of corner established since Original Government Survey

The 1940's McCoy boundary notes show a corner at this location.

Description of evidence found

On October 31st, 2012, Anderson Engineering of Minnesota located the McCoy monument, a 4 inch U. S. Army Corps of Engineers survey control mark disk set in concrete. No recorded history of this monument being perpetuated or utilized in subsequent surveys. The monument was not accepted as the corner. On April 22nd, 2013, Anderson Engineering of Minnesota set a 30 inch Berntsen aluminum dig monument with a 3 1/4 inch aluminum cap, stamped "FORT MCCOY BOUNDARY" "2013" "ANDERSON ENG. OF MN." The monument is set midway online between the south quarter corner and the southeast corner of Section 21.

No. _____
21702210010

Description of corner and witness monuments, references and accessories used to perpetuate the original or re-established location of this corner:

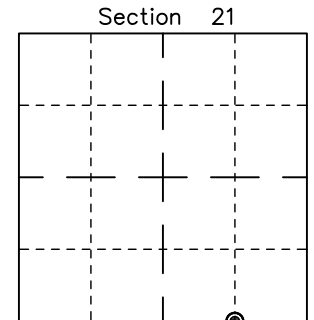
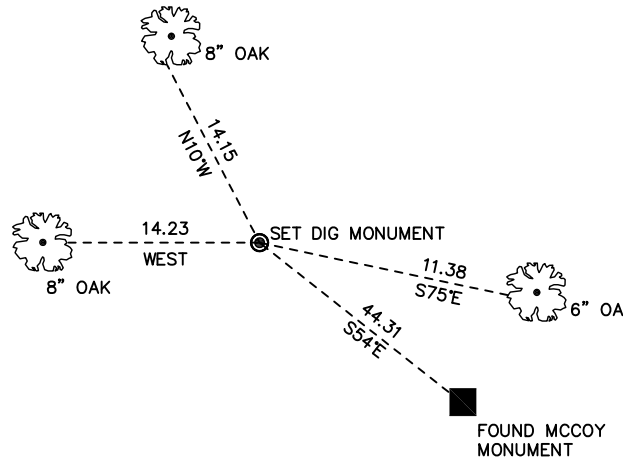
Witnesses to corner location:

Nick Hillmer
Josh Oslund
Dan Greenwald

MONROE COUNTY
COORDINATE SYSTEM
NAD 1983 (2007)

MCCOY DIG MONUMENT
Northing (Y) 373729.59
Easting (X) 677572.44

Base Station - 22 182W
Northing (Y) 408053.25
Easting (X) 679287.00



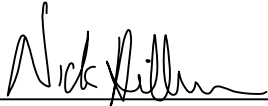
● = LOCATION CORNER
Corner I.D. E 1/16 21
T 17 N R 2 W
Town of Adrian
Monroe County, WI.

All distances are shown in U.S. Survey Feet.
Ties are to 60D nails set in trees.
Bearings are for tie reference purposes only.
Coordinates were derived from RTK GNSS procedures.

CERTIFICATE

I, Nicholas M. Hillmer, do hereby certify that this document and the data contained herein was prepared by me or under my direct supervision and that I am a duly Licensed Land Surveyor under the laws of the State of Wisconsin.

Dated this 21st day of May, 2013



Nicholas M. Hillmer, P.L.S. 2909
Anderson Engineering of Minnesota, LLC.

CERTIFIED LAND CORNER

History of corner established since Original Government Survey

The 1940's McCoy boundary notes show a corner at this location. In June of 1994 Gary Dechant found and accepted the fence corner as the best available evidence. Dechant set a TCP monument at the location.

No. 21702210020

Description of evidence found

On October 31st, 2012, Anderson Engineering of Minnesota located the TCP monument flush with ground. The monument is 1.0 foot south of a fence that runs east, and 2.5 feet east of a fence that runs south.

Description of corner and witness monuments, references and accessories used to perpetuate the original or re-established location of this corner:

Witnesses to corner location:

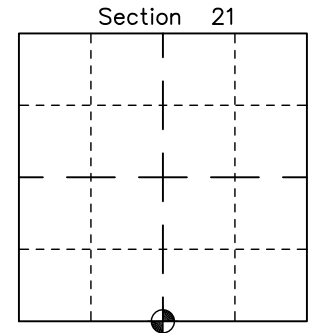
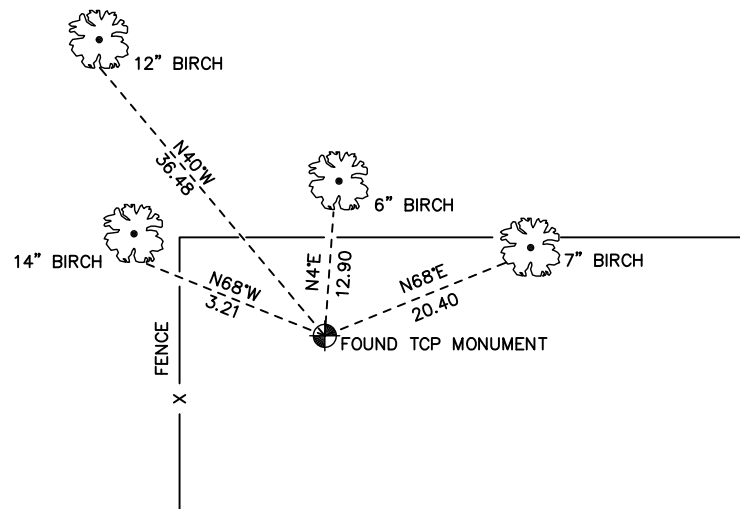
Nick Hillmer
Josh Oslund
Dan Greenwald

MONROE COUNTY
COORDINATE SYSTEM
NAD 1983 (2007)

TCP MONUMENT

Northing (Y) 373734.55
Easting (X) 676258.53

Base Station - 22 182W
Northing (Y) 408053.25
Easting (X) 679287.00



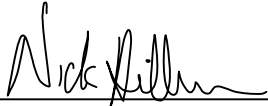
● = LOCATION CORNER
Corner I.D. S 1/4 21
T 17 N R 2 W
Town of Adrian
Monroe County, WI.

All distances are shown in U.S. Survey Feet.
Ties are to 60D nails set in trees.
Bearings are for tie reference purposes only.
Coordinates were derived from RTK GNSS procedures.

CERTIFICATE

I, Nicholas M. Hillmer, do hereby certify that this document and the data contained herein was prepared by me or under my direct supervision and that I am a duly Licensed Land Surveyor under the laws of the State of Wisconsin.

Dated this 21st day of May, 2013



Nicholas M. Hillmer, P.L.S. 2909
Anderson Engineering of Minnesota, LLC.

CERTIFIED LAND CORNER

History of corner established since Original Government Survey

The 1940's McCoy boundary notes show a corner at this location.

Description of evidence found

No evidence of the McCoy monument was found. On April 22nd, 2013, Anderson Engineering of Minnesota set a 30 inch Berntsen aluminum dig monument with a 3 1/4 inch aluminum cap, stamped "FORT MCCOY BOUNDARY" "2013" "ANDERSON ENG. OF MN." The monument is set midway online between the south quarter corner and the southwest corner of Section 21.

No. _____
21702210030

Description of corner and witness monuments, references and accessories used to perpetuate the original or re-established location of this corner:

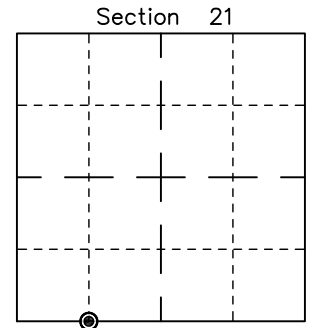
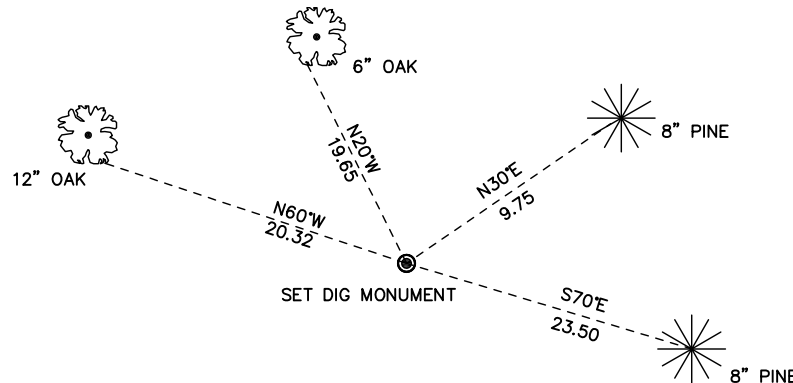
Witnesses to corner location:

Nick Hillmer
Josh Oslund
Dan Greenwald

MONROE COUNTY
COORDINATE SYSTEM
NAD 1983 (2007)

MCCOY DIG MONUMENT
Northing (Y) 373720.98
Easting (X) 674974.31

Base Station - 22 182W
Northing (Y) 408053.25
Easting (X) 679287.00



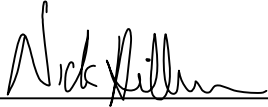
● = LOCATION CORNER
Corner I.D. W 1/16 21
T 17 N R 2 W
Town of Adrian
Monroe County, WI.

All distances are shown in U.S. Survey Feet.
Ties are to 60D nails set in trees.
Bearings are for tie reference purposes only.
Coordinates were derived from RTK GNSS procedures.

CERTIFICATE

I, Nicholas M. Hillmer, do hereby certify that this document and the data contained herein was prepared by me or under my direct supervision and that I am a duly Licensed Land Surveyor under the laws of the State of Wisconsin.

Dated this 21st day of May, 2013



Nicholas M. Hillmer, P.L.S. 2909
Anderson Engineering of Minnesota, LLC.

CERTIFIED LAND CORNER

History of corner established since Original Government Survey

The 1940's McCoy boundary notes show a corner at this location.

Description of evidence found

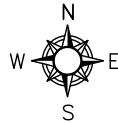
No evidence of the McCoy monument was found. On April 22nd, 2013, Anderson Engineering of Minnesota set a 30 inch Berntsen aluminum dig monument with a 3 1/4 inch aluminum cap, stamped "FORT MCCOY BOUNDARY" "2013" "ANDERSON ENG. OF MN." The monument is set at the legal position per the section breakdown. An old downed fence grown into the trees runs east and west from the corner.

No. 21702283030

Description of corner and witness monuments, references and accessories used to perpetuate the original or re-established location of this corner:

Witnesses to corner location:

Nick Hillmer
Josh Oslund
Dan Greenwald

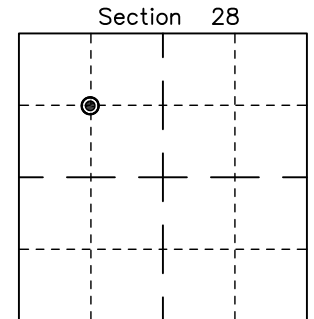
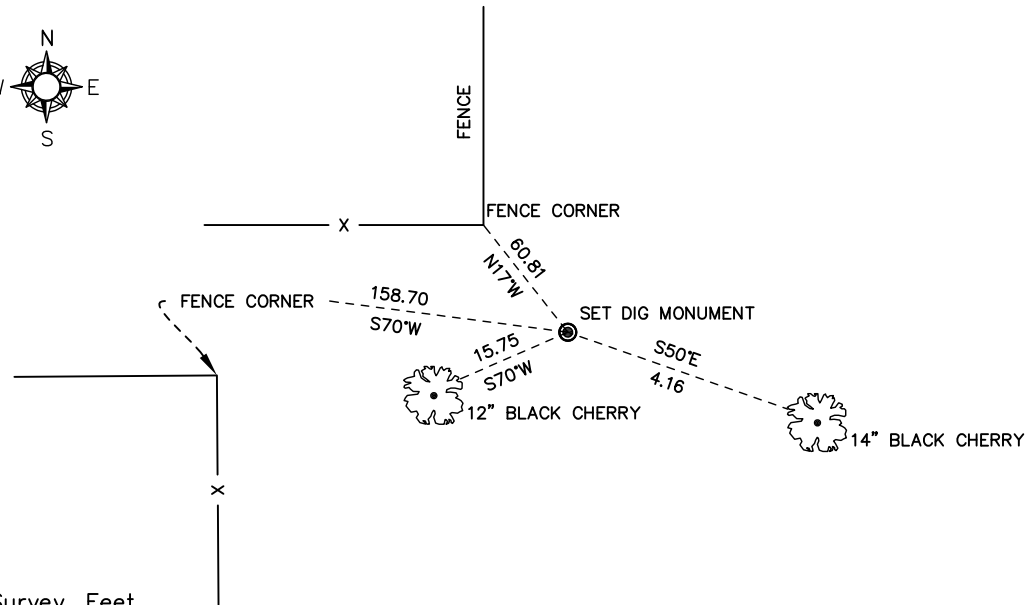


MONROE COUNTY
COORDINATE SYSTEM
NAD 1983 (2007)

MCCOY DIG MONUMENT
Northing (Y) 372407.60
Easting (X) 674979.37

Base Station - 22 182W
Northing (Y) 408053.25
Easting (X) 679287.00

All distances are shown in U.S. Survey Feet.
Ties are to 60D nails set in trees.
Bearings are for tie reference purposes only.
Coordinates were derived from RTK GNSS procedures.

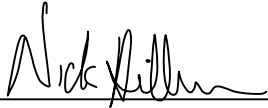


⊙ = LOCATION CORNER
Corner I.D. NW 1/16 28
T 17 N R 2 W
Town of Adrian
Monroe County, WI.

CERTIFICATE

I, Nicholas M. Hillmer, do hereby certify that this document and the data contained herein was prepared by me or under my direct supervision and that I am a duly Licensed Land Surveyor under the laws of the State of Wisconsin.

Dated this 21st day of May, 2013



Nicholas M. Hillmer, P.L.S. 2909
Anderson Engineering of Minnesota, LLC.

CERTIFIED LAND CORNER

History of corner established since Original Government Survey

No known recorded history. The 1940's McCoy boundary surveyed in a straight line from the NW 1/16 of Section 28 to the NW 1/16 of Section 29. McCoy boundary notes dated October 24, 1962, show encroaching fences in multiple locations along the boundary line.

No. 21702293000

Description of evidence found

On April 22nd 2013, Anderson Engineering of Minnesota set a 30 inch Berntsen aluminum dig monument with a 3 1/4 inch aluminum cap, stamped "FORT MCCOY BOUNDARY" "2013" "ANDERSON ENG. OF MN." The monument is set midway online between the east quarter corner and the northeast corner of Section 29.

Description of corner and witness monuments, references and accessories used to perpetuate the original or re-established location of this corner:

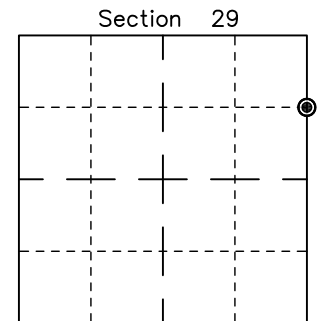
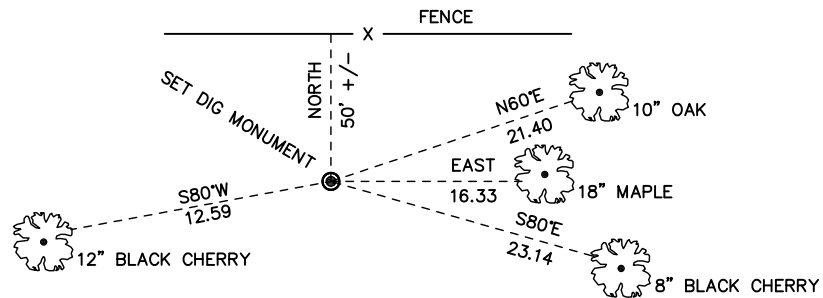
Witnesses to corner location:

Nick Hillmer
Josh Oslund
Dan Greenwald

MONROE COUNTY
COORDINATE SYSTEM
NAD 1983 (2007)

MCCOY DIG MONUMENT
Northing (Y) 372392.94
Easting (X) 673685.74

Base Station - 22 182W
Northing (Y) 408053.25
Easting (X) 679287.00



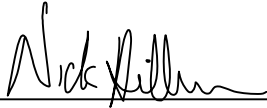
⊙ = LOCATION CORNER
Corner I.D. N 1/16 29
T 17 N R 2 W
Town of Adrian
Monroe County, WI.

All distances are shown in U.S. Survey Feet.
Ties are to 60D nails set in trees.
Bearings are for tie reference purposes only.
Coordinates were derived from RTK GNSS procedures.

CERTIFICATE

I, Nicholas M. Hillmer, do hereby certify that this document and the data contained herein was prepared by me or under my direct supervision and that I am a duly Licensed Land Surveyor under the laws of the State of Wisconsin.

Dated this 21st day of May, 2013



Nicholas M. Hillmer, P.L.S. 2909
Anderson Engineering of Minnesota, LLC.

CERTIFIED LAND CORNER

No. 21702293020

History of corner established since Original Government Survey

No known recorded history. The 1940's McCoy boundary surveyed in a straight line from the NW 1/16 of Section 28 to the NW 1/16 of Section 29. McCoy boundary notes dated October 24, 1962, show encroaching fences in multiple locations along the boundary line.

Description of evidence found

On April 22nd, 2013, Anderson Engineering of Minnesota set a 30 inch Berntsen aluminum dig monument with a 3 1/4 inch aluminum cap, stamped "FORT MCCOY BOUNDARY" "2013" "ANDERSON ENG. OF MN." The monument is set midway online between the north quarter corner and the center of Section 29.

Description of corner and witness monuments, references and accessories used to perpetuate the original or re-established location of this corner:

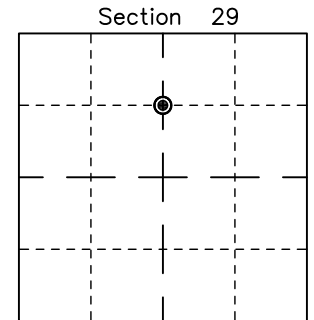
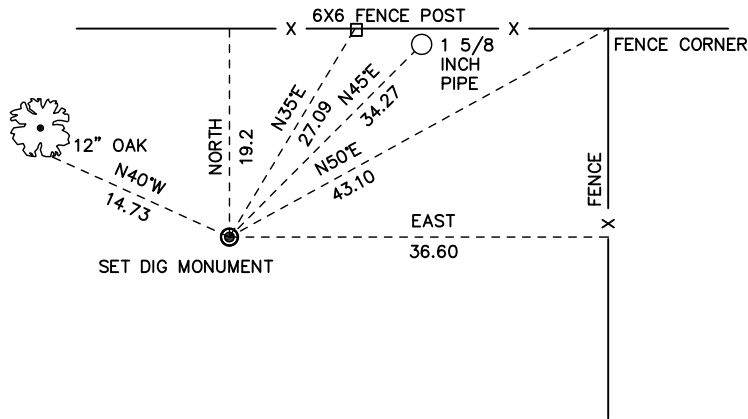
Witnesses to corner location:

Nick Hillmer
Josh Oslund
Dan Greenwald

MONROE COUNTY
COORDINATE SYSTEM
NAD 1983 (2007)

MCCOY DIG MONUMENT
Northing (Y) 372379.14
Easting (X) 671082.21

Base Station - 22 182W
Northing (Y) 408053.25
Easting (X) 679287.00



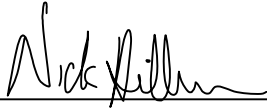
● = LOCATION CORNER
Corner I.D. CN 1/16 29
T 17 N R 2 W
Town of Adrian
Monroe County, WI.

All distances are shown in U.S. Survey Feet.
Ties are to 60D nails.
Bearings are for tie reference purposes only.
Coordinates were derived from RTK GNSS procedures.

CERTIFICATE

I, Nicholas M. Hillmer, do hereby certify that this document and the data contained herein was prepared by me or under my direct supervision and that I am a duly Licensed Land Surveyor under the laws of the State of Wisconsin.

Dated this 21st day of May, 2013



Nicholas M. Hillmer, P.L.S. 2909
Anderson Engineering of Minnesota, LLC.

CERTIFIED LAND CORNER

History of corner established since Original Government Survey

Fred Holden set a pipe at this location in 1907. In 1940 Ray Hurlburt found Holden's pipe. The 1940's McCoy boundary notes show a corner at this location.

Description of evidence found

On October 30th 2012, Anderson Engineering of Minnesota located the 1 1/4 inch solid iron rod set by Fred Holden in 1907 1.0 foot southwest of a fence corner post of a fence running north, east and south. On April 22, 2013, Anderson Engineering of Minnesota replaced Holden's iron with a 30 inch Berntsen aluminum dig monument with a 3 1/4 inch aluminum cap, stamped "FORT MCCOY BOUNDARY" "2013" "ANDERSON ENG. OF MN."

No. 21702293030

Description of corner and witness monuments, references and accessories used to perpetuate the original or re-established location of this corner:

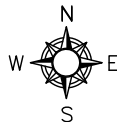
Witnesses to corner location:

Nick Hillmer
Josh Oslund
Dan Greenwald

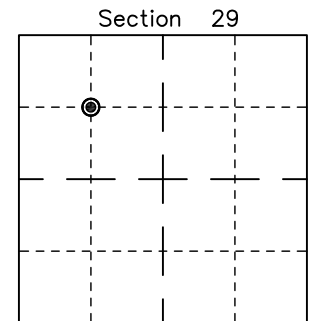
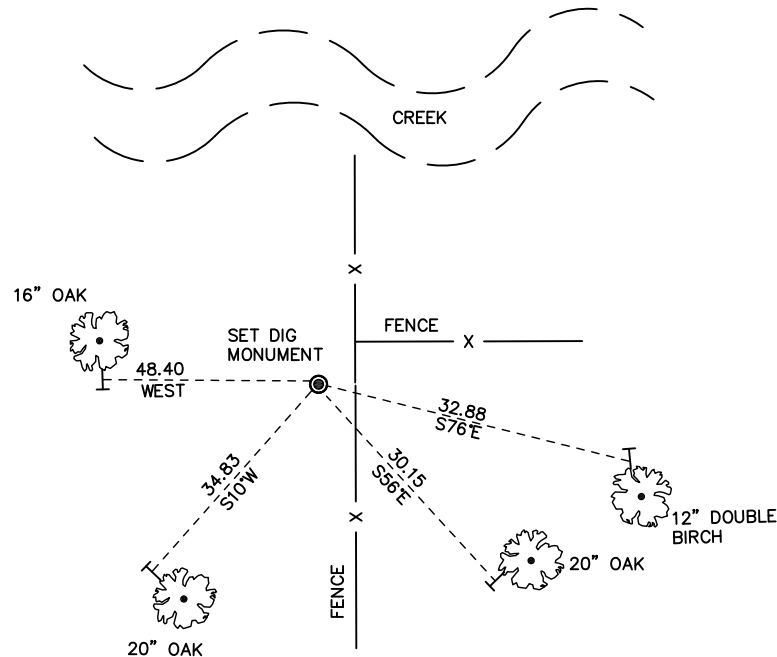
MONROE COUNTY
COORDINATE SYSTEM
NAD 1983 (2007)

MCCOY DIG MONUMENT
Northing (Y) 372356.22
Easting (X) 669783.32

Base Station - 22 182W
Northing (Y) 408053.25
Easting (X) 679287.00



All distances shown in U.S. Survey Feet.
Ties are made to 60 D Nails set in trees.
Bearings are for tie reference purposes only.
Coordinates derived from RTK GNSS procedures.

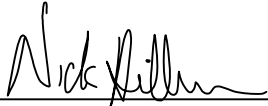


● = LOCATION CORNER
Corner I.D. NW 1/16 29
T 17 N R 2 W
Town of Adrian
Monroe County, WI.

CERTIFICATE

I, Nicholas M. Hillmer, do hereby certify that this document and the data contained herein was prepared by me or under my direct supervision and that I am a duly Licensed Land Surveyor under the laws of the State of Wisconsin.

Dated this 21st day of May, 2013



Nicholas M. Hillmer, P.L.S. 2909
Anderson Engineering of Minnesota, LLC.

CERTIFIED LAND CORNER

History of corner established since Original Government Survey

Fred Holden set a 1 1/2 inch pipe here in 1907. The 1940's McCoy boundary notes show a corner at this location.

Description of evidence found

On October 31, 2012, Anderson Engineering of Minnesota located the 1 1/2 inch iron pipe set by Fred Holden in 1911 near a fence corner with fence running to the west and south. On April 22, 2013, Anderson Engineering of Minnesota replaced Holden's iron with a 30 inch Berntsen aluminum dig monument with a 3 1/4 inch aluminum cap, stamped "FORT MCCOY BOUNDARY" "2013" "ANDERSON ENG. OF MN."

No. 21702200030

Description of corner and witness monuments, references and accessories used to perpetuate the original or re-established location of this corner:

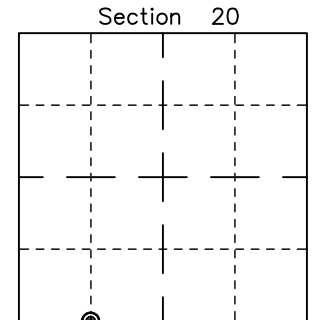
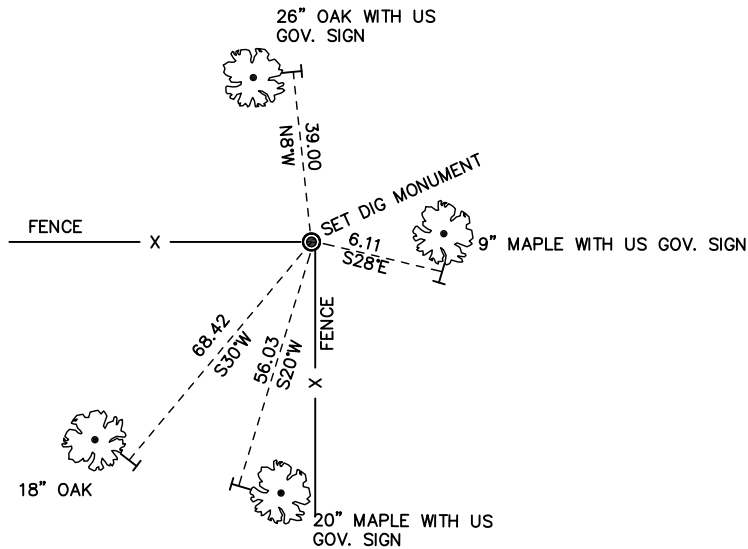
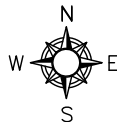
Witnesses to corner location:

Nick Hillmer
Josh Oslund
Dan Greenwald

MONROE COUNTY
COORDINATE SYSTEM
NAD 1983 (2007)

MCCOY DIG MONUMENT
Northing (Y) 373681.71
Easting (X) 669801.38

Base Station - 22 182W
Northing (Y) 408053.25
Easting (X) 679287.00



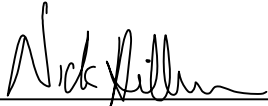
● = LOCATION CORNER
Corner I.D. W 1/16 20
T 17 N R 2 W
Town of Adrian
Monroe County, WI.

All distances shown in U.S. Survey Feet.
Ties are made to 60 D Nails set in trees.
Bearings are for tie reference purposes only.
Coordinates derived from RTK GNSS procedures.

CERTIFICATE

I, Nicholas M. Hillmer, do hereby certify that this document and the data contained herein was prepared by me or under my direct supervision and that I am a duly Licensed Land Surveyor under the laws of the State of Wisconsin.

Dated this 21st day of May, 2013



Nicholas M. Hillmer, P.L.S. 2909
Anderson Engineering of Minnesota, LLC.

CERTIFIED LAND CORNER

History of corner established since Original Government Survey

Fred Holden set an iron pipe here in April of 1907. The 1940's McCoy boundary notes show a corner at this location. H. Sime shows an iron pipe at this corner in June of 1961. In Sept. of 1980 William C. Jung did not find the iron pipe and set a Harrison Monument by using the McCoy notes in relation to the existing fence corner.

No. 21702190000

Description of evidence found

On October 30th, 2012, Anderson Engineering of Minnesota located the Harrison monument flush with the ground and 0.5 feet north of a metal "T" post.

Description of corner and witness monuments, references and accessories used to perpetuate the original or re-established location of this corner:

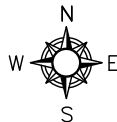
Witnesses to corner location:

Nick Hillmer
Josh Oslund
Dan Greenwald

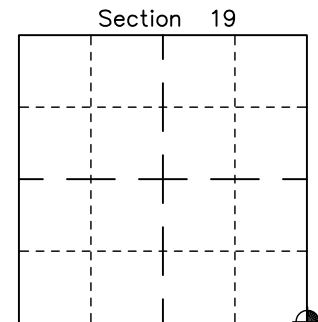
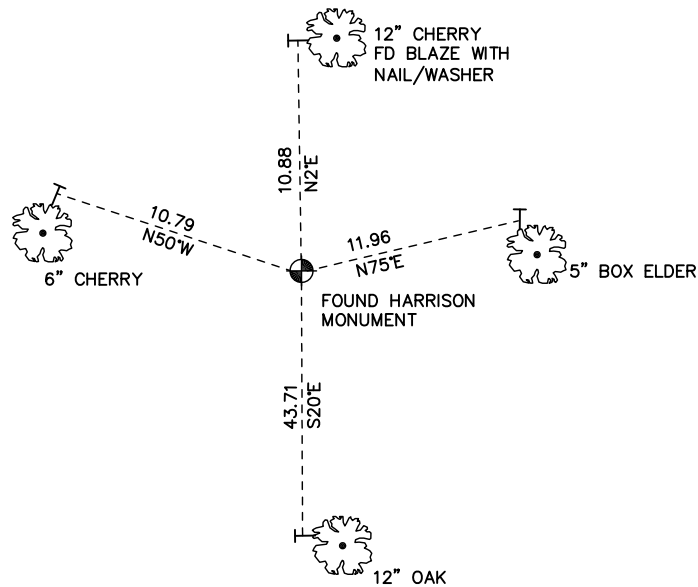
MONROE COUNTY
COORDINATE SYSTEM
NAD 1983 (2007)

HARRISON MONUMENT
Northing (Y) 373675.19
Easting (X) 668496.16

Base Station - 22 182W
Northing (Y) 408053.25
Easting (X) 679287.00



All distances shown in U.S. Survey Feet.
Ties are made to 60 D Nails set in trees.
Bearings are for tie reference purposes only.
Coordinates derived from RTK GNSS procedures.

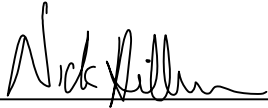


● = LOCATION CORNER
Corner I.D. SE 19
T 17 N R 2 W
Town of Adrian
Monroe County, WI.

CERTIFICATE

I, Nicholas M. Hillmer, do hereby certify that this document and the data contained herein was prepared by me or under my direct supervision and that I am a duly Licensed Land Surveyor under the laws of the State of Wisconsin.

Dated this 21st day of May, 2013



Nicholas M. Hillmer, P.L.S. 2909
Anderson Engineering of Minnesota, LLC.

CERTIFIED LAND CORNER

History of corner established since Original Government Survey

In September of 1980, Harley Sime set a Harrison monument by doubling the distance between the northeast corner of Section 19 and the north 1/16 of Section 19.

No. 21702192000

Description of evidence found

On October 29th, 2012, Anderson Engineering of Minnesota located the Harrison monument with the top missing 0.3 feet above grade and 0.2 feet from a metal fence post.

Description of corner and witness monuments, references and accessories used to perpetuate the original or re-established location of this corner:

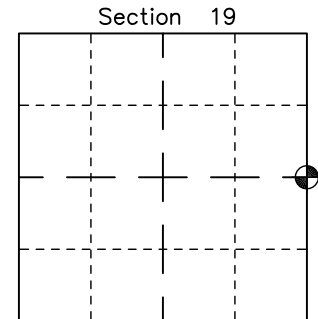
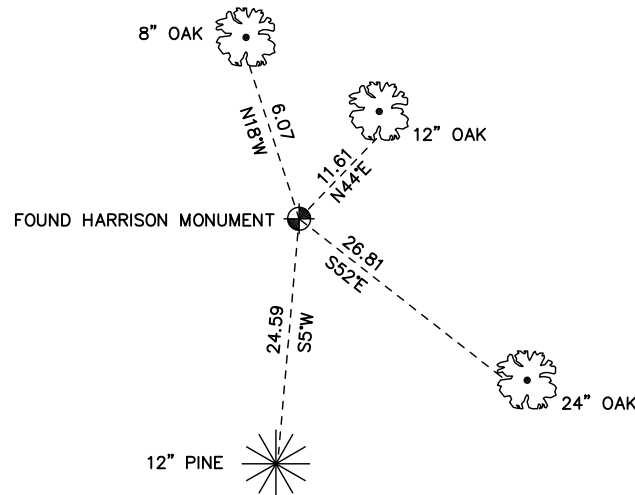
Witnesses to corner location:

Nick Hillmer
Josh Oslund
Dan Greenwald

MONROE COUNTY
COORDINATE SYSTEM
NAD 1983 (2007)

HARRISON MONUMENT
Northing (Y) 376274.70
Easting (X) 668492.36

Base Station - 22 182W
Northing (Y) 408053.25
Easting (X) 679287.00



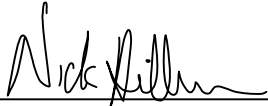
☉ = LOCATION CORNER
Corner I.D. E 1/4 19
T 17 N R 2 W
Town of Adrian
Monroe County, WI.

All distances are shown in U.S. Survey Feet.
Ties are to 60D nails set in trees.
Bearings are for tie reference purposes only.
Coordinates were derived from RTK GNSS procedures.

CERTIFICATE

I, Nicholas M. Hillmer, do hereby certify that this document and the data contained herein was prepared by me or under my direct supervision and that I am a duly Licensed Land Surveyor under the laws of the State of Wisconsin.

Dated this 21st day of May, 2013



Nicholas M. Hillmer, P.L.S. 2909
Anderson Engineering of Minnesota, LLC.

CERTIFIED LAND CORNER

History of corner established since Original Government Survey

There is no known history at this location.

Description of evidence found

On May 07, 2013, Anderson Engineering of Minnesota set a 30 inch Berntsen aluminum dig monument with a 3 1/4 inch aluminum cap, stamped "FORT MCCOY BOUNDARY" "2013" "ANDERSON ENG. OF MN." The monument is set at the intersection of the the north right-of-way of County Highway Number 16 and the east line of Section 19.

No. _____
[]

Description of corner and witness monuments, references and accessories used to perpetuate the original or re-established location of this corner:

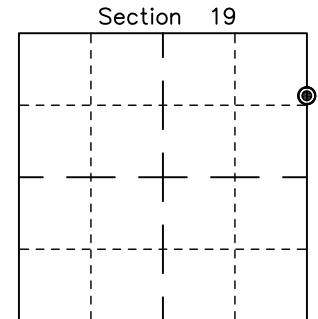
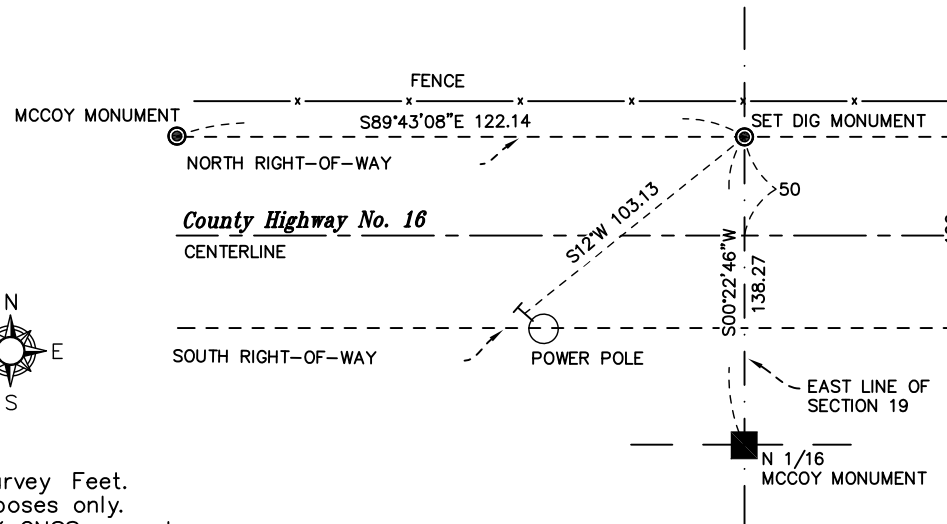
Witnesses to corner location:

Nick Hillmer
Josh Oslund
Dan Greenwald

MONROE COUNTY
COORDINATE SYSTEM
NAD 1983 (2007)

MCCOY DIG MONUMENT
Northing (Y) 377722.02
Easting (X) 668502.75

Base Station - 22 182W
Northing (Y) 408053.25
Easting (X) 679287.00



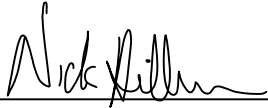
⊙ = LOCATION CORNER
Corner I.D. N ROW OF HWY
16 & E LINE
T 17 N R 2 W
Town of Adrian
Monroe County, WI.

All distances are shown in U.S. Survey Feet.
Bearings are for tie reference purposes only.
Coordinates were derived from RTK GNSS procedures.

CERTIFICATE

I, Nicholas M. Hillmer, do hereby certify that this document and the data contained herein was prepared by me or under my direct supervision and that I am a duly Licensed Land Surveyor under the laws of the State of Wisconsin.

Dated this 21st day of May, 2013



Nicholas M. Hillmer, P.L.S. 2909
Anderson Engineering of Minnesota, LLC.

CERTIFIED LAND CORNER

History of corner established since Original Government Survey

There is no known history at this location.

Description of evidence found

On May 22, 2013, Anderson Engineering of Minnesota set a 30 inch Berntsen aluminum dig monument with a 3 1/4 inch aluminum cap, stamped "FORT MCCOY BOUNDARY" "2013" "ANDERSON ENG. OF MN." The monument is set on the north right-of-way of County Highway Number 16 at the point of curvature of a 7587.14 foot radius curve. The monument is 122.14 feet west of the east line of Section 19.

No. _____

Description of corner and witness monuments, references and accessories used to perpetuate the original or re-established location of this corner:

Witnesses to corner location:

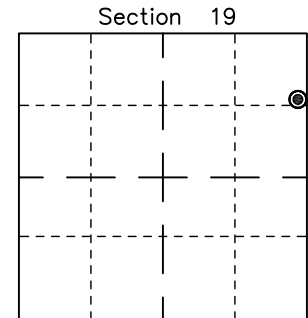
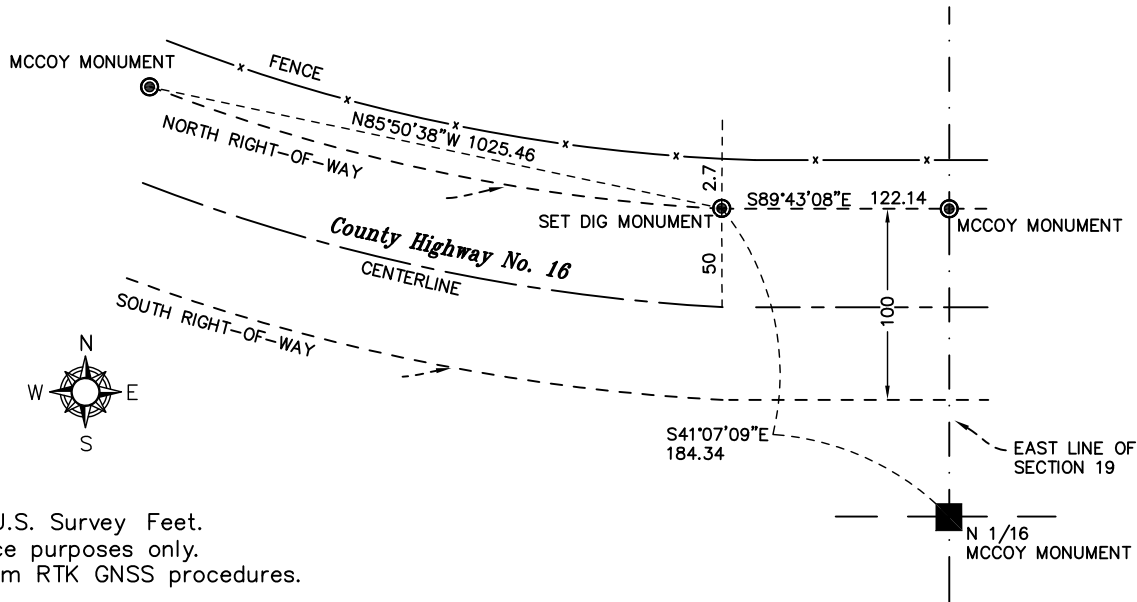
Nick Hillmer
Kyle Anderson
Dan Greenwald

MONROE COUNTY
 COORDINATE SYSTEM
 NAD 1983 (2007)

MCCOY DIG MONUMENT
 Northing (Y) 377722.62
 Easting (X) 668380.61

Base Station - 22 182W
 Northing (Y) 408053.25
 Easting (X) 679287.00

All distances are shown in U.S. Survey Feet.
 Bearings are for tie reference purposes only.
 Coordinates were derived from RTK GNSS procedures.

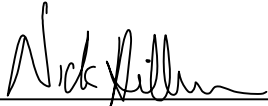


⊙ = LOCATION CORNER
 Corner I.D. EAST P.C.
ROW HWY 16
 T 17 N R 2 W
 Town of Adrian
 Monroe County, WI.

CERTIFICATE

I, Nicholas M. Hillmer, do hereby certify that this document and the data contained herein was prepared by me or under my direct supervision and that I am a duly Licensed Land Surveyor under the laws of the State of Wisconsin.

Dated this 21st day of May, 2013



Nicholas M. Hillmer, P.L.S. 2909
Anderson Engineering of Minnesota, LLC.

CERTIFIED LAND CORNER

History of corner established since Original Government Survey

There is no known history at this location.

Description of evidence found

On May 22, 2013, Anderson Engineering of Minnesota set a 30 inch Berntsen aluminum dig monument with a 3 1/4 inch aluminum cap, stamped "FORT MCCOY BOUNDARY" "2013" "ANDERSON ENG. OF MN." The monument is set on the north right-of-way of County Highway Number 16 at the point of curvature of a 7587.14 foot radius curve.

No. _____

Description of corner and witness monuments, references and accessories used to perpetuate the original or re-established location of this corner:

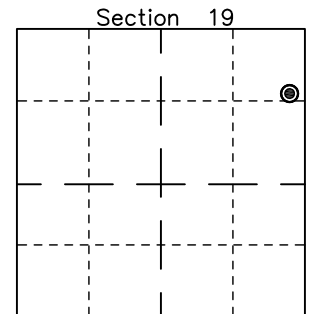
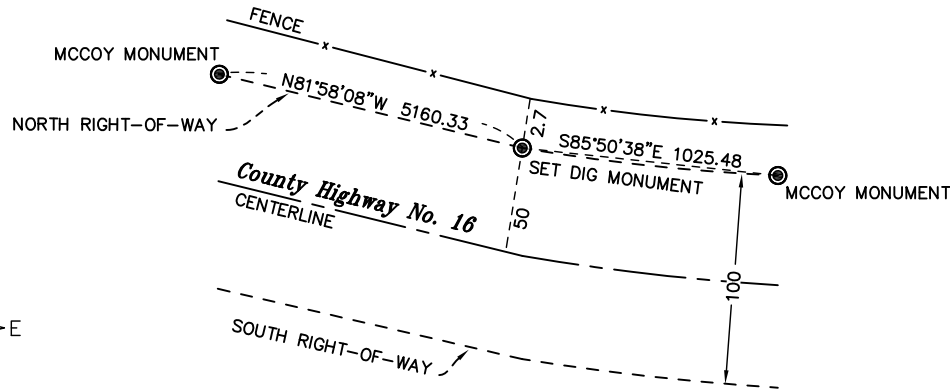
Witnesses to corner location:

Nick Hillmer
Kyle Anderson
Dan Greenwald

MONROE COUNTY
 COORDINATE SYSTEM
 NAD 1983 (2007)

MCCOY DIG MONUMENT
 Northing (Y) 377796.93
 Easting (X) 667357.83

Base Station - 22 182W
 Northing (Y) 408053.25
 Easting (X) 679287.00



⊙ = LOCATION CORNER
 Corner I.D. WEST P.C.
ROW HWY 16
 T 17 N R 2 W
 Town of Adrian
 Monroe County, WI.

All distances are shown in U.S. Survey Feet.
 Bearings are for tie reference purposes only.
 Coordinates were derived from RTK GNSS procedures.