


**U.S. PUBLIC LAND CORNER  
MAINTENANCE**

# 44

**Corner ID:** S1/4 Sec. 11, T17N-R2W  
**21702110020**

<u>DATE</u>	<u>CREW</u>	<u>MONUMENT INFO</u>
December 20, 2019	Zachariah P. Dechant Gary L. Dechant	Existing Harrison intact, at fence corner Set sign 1' SE. Did not find stone

	<u>Bearing</u>	<u>Distance</u>
1) Set 5/8"x24" round iron bar, 4' SW of 5" Shagbark Hickory	N64E	15.45'
2) Set 5/8"x24" round iron bar, 4' NW of 3" Shagbark Hickory	S38E	15.29'
3) Set 5/8"x24" round iron bar,	S24W	18.29'
4) Set 5/8"x24" round iron bar, 4' SE of 6" Shagbark Hickory	N67W	9.83'

*Gary L. Dechant*  
  
*December 23, 2019*

---

CERTIFICATE

I, Harley A. Sime, do hereby certify that on the 25th day of November 19 74, I found (evidence) (~~no evidence~~) of the South 1/4 corner of Section 11, T 17 N, R 2 W Fourth Principal Meridian, and I re-established said corner according to the Wisconsin Statutes as shown and described hereon. Dated this 28th day of March 19 77.

CERTIFIED LAND CORNER

History of original corner establishment:  
H. LaRue was here in 1900. Fd. stone.

**See Reverse Side For Maintenance**

Description of corner evidence found:  
Found very large stone at fence intersection at South 1/4 corner. The distance from there to the southeast corner agreed with the original Government notes. Old stone was on record. Wire thru trees showed the fence to have been there for some time.

County Surveyor  
Title

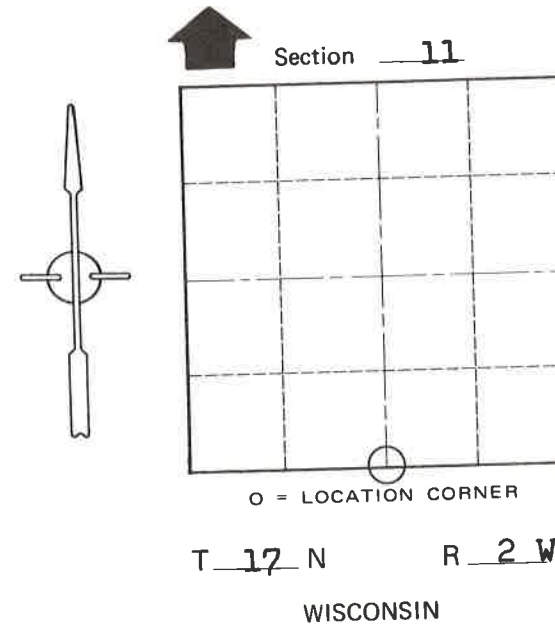
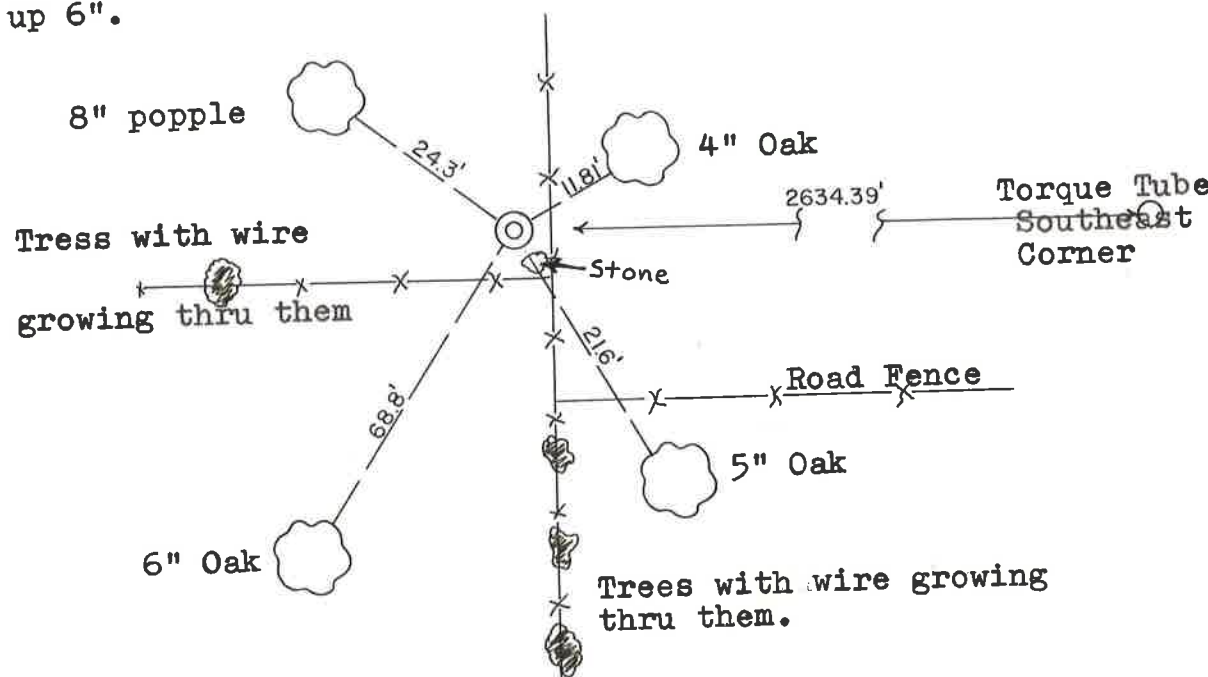
Approved: **HARLEY A. SIME**  
**MONROE CO. SURVEYOR**

Description of corner and witness monuments, references and accessories used to perpetuate the original or re-established location of this corner:

Set harrison marker near stone, up 6".

Witnesses to corner location:

Jung  
Pritzlaff  
Lueck



SURVEY CONTROL ORDER

Horizontal \_\_\_\_\_  
Vertical \_\_\_\_\_

WISCONSIN COORDINATE SYSTEM				
Corner	East (X)	North (Y)	Elevation (Z)	Zone
Control Sta. Name			1180 ±	

City, Village or Town Adrian  
County of Monroe

COUNTY SURVEYOR FORM NO. 1