


CERTIFICATE

I, Nicholas M. Hillmer, do hereby certify that this document and the data contained herein was prepared by me or under my direct supervision and that I am a duly Licensed Land Surveyor under the laws of the State of Wisconsin.

Dated this 23rd day of May, 2013



Nicholas M. Hillmer, P.L.S. 2909
Anderson Engineering of Minnesota, LLC.

CERTIFIED LAND CORNER

History of corner established since Original Government Survey

H. Schroeder was at this corner in 1886. In December of 1974 Harley A. Sime set a Harrison monument by occupation. In 1996 Bryan Meyer found three of the ties missing and retied the corner with three new ties and one old tie.

Description of evidence found

On February 21, 2013, Anderson Engineering of Minnesota located the Harrison monument in a lowland area and 0.8 foot West of a fence.

No. 21702102000



Description of corner and witness monuments, references and accessories used to perpetuate the original or re-established location of this corner:

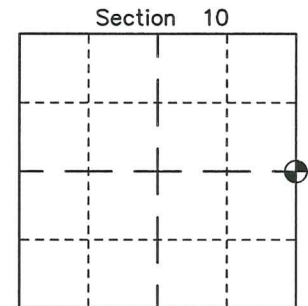
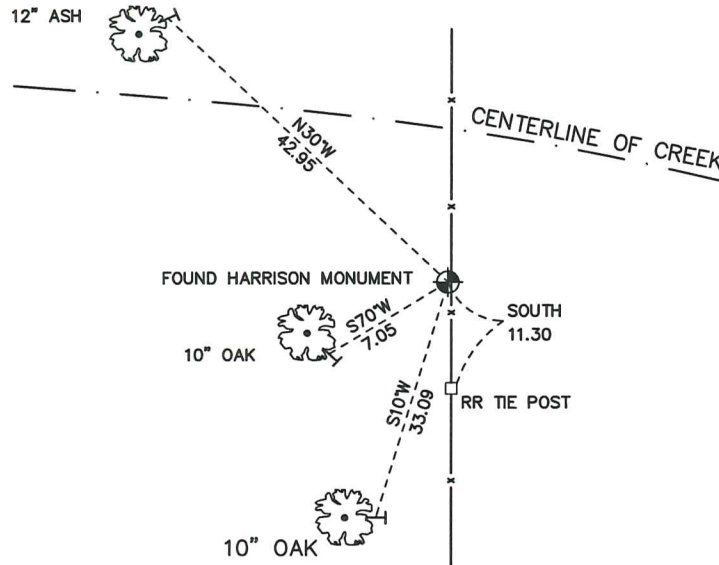
Witnesses to corner location:

Nick Hillmer
Dan Greenwald

MONROE COUNTY
COORDINATE SYSTEM
NAD 1983 (2007)

HARRISON MONUMENT
Northing (Y) 386880.78
Easting (X) 683980.24

Base Station - 22 182W
Northing (Y) 408053.25
Easting (X) 679287.00



⊙ = LOCATION CORNER
 Corner I.D. E 1/4 10
 T 17 N R 2 W
 Town of Adrian
 Monroe County, WI.

All distances are shown in U.S. Survey Feet.
 Ties are to 60D nails set in trees.
 Bearings are for tie reference purposes only.
 Coordinates were derived from RTK GNSS procedures.

CERTIFICATE

UPDATED
CERTIFIED LAND CORNER

21702102000

No. 38
Page 2

I, Harley A. Sime, do hereby certify that on the 10th day of December 1974, I found (evidence) (~~was~~) of the West 1/4 corner of Section 11, T 17 N, R 2 W, Fourth Principal Meridian, and I re-established said corner according to the Wisconsin Statutes as shown and described hereon.

Dated this 28th day of March 1977.

County Surveyor
Title

History of original corner establishment:

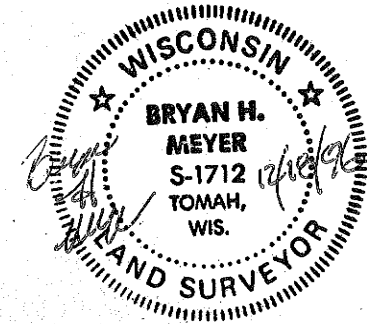
H. Schroeder was this corner in December of 1886.

Description of corner evidence found:

Set by occupation corner.

UPDATE:

While doing survey work to the Northwest, I retied to this corner and found that three of the ties were gone. I got three new ties and used one of the old ties as shown below.

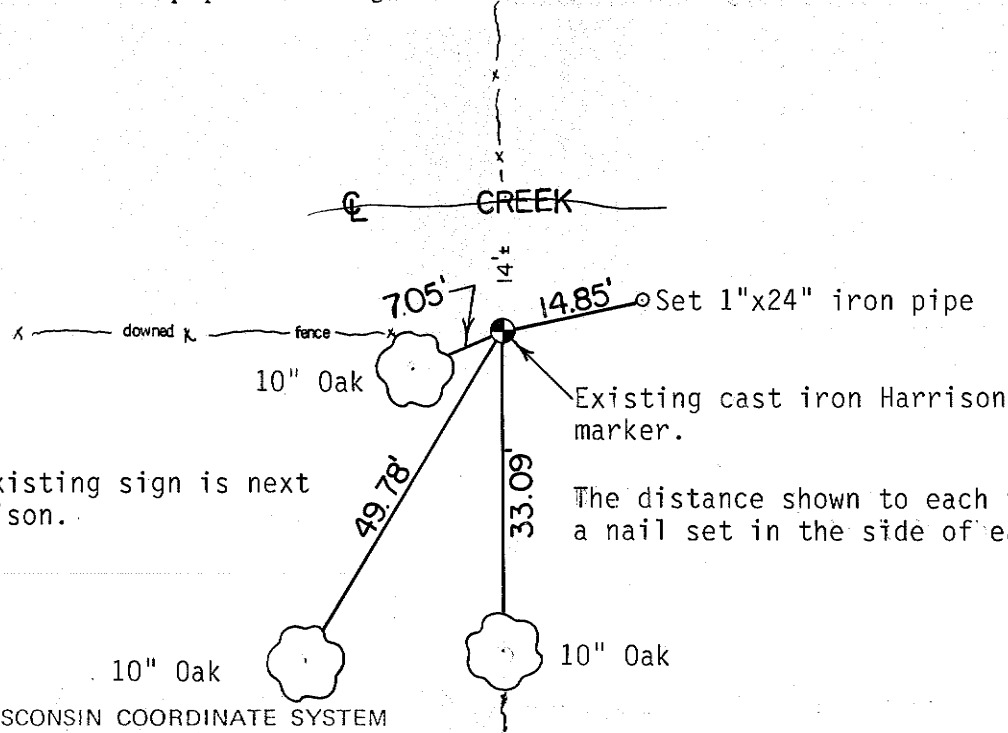
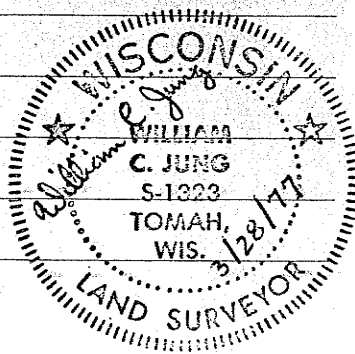


Description of corner and witness monuments, references and accessories used to perpetuate the original or re-established location of this corner:

Update crew: Meyer, Schreiber
Date: December 18, 1996
Weather: Sunny, Windy, 10°±
Witnesses to corner location:

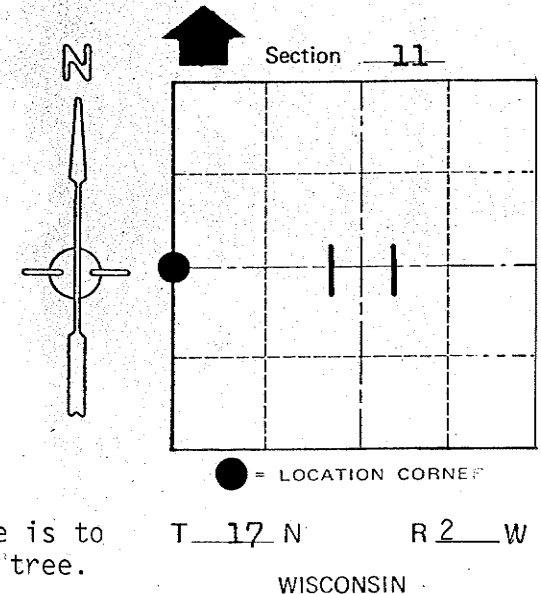
Jung

Malliet



NOTE: Existing sign is next to Harrison.

The distance shown to each tree is to a nail set in the side of each tree.



SURVEY CONTROL ORDER

Horizontal	_____
Vertical	_____

WISCONSIN COORDINATE SYSTEM

Corner	East (X)	North (Y)	Elevation (Z)	Zone
Control Sta. Name				

~~City Village of~~ Town Adrian
County of Monroe

COUNTY SURVEYOR FORM NO. 1