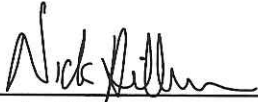


**CERTIFICATE**

I, Nicholas M. Hillmer, do hereby certify that this document and the data contained herein was prepared by me or under my direct supervision and that I am a duly Licensed Land Surveyor under the laws of the State of Wisconsin.

Dated this 21st day of May, 2013



Nicholas M. Hillmer, P.L.S. 2909  
Anderson Engineering of Minnesota, LLC.

**CERTIFIED LAND CORNER**

History of corner established since Original Government Survey

The 1940's McCoy boundary notes show a corner at this location. In August of 1980 Harley Sime found and accepted a McCoy boundary marker as the corner.

Description of evidence found

On September 28th, 2012, Anderson Engineering of Minnesota located the McCoy monument, a 4 inch U.S. Army Corps of Engineers survey control mark disk set in concrete 0.9 feet above grade.

No. 21702100020



Description of corner and witness monuments, references and accessories used to perpetuate the original or re-established location of this corner:

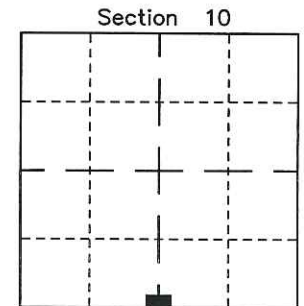
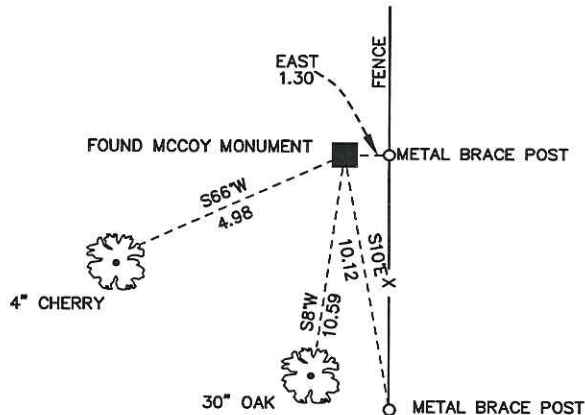
Witnesses to corner location:

Nick Hillmer  
Josh Oslund  
Dan Greenwald

MONROE COUNTY  
COORDINATE SYSTEM  
NAD 1983 (2007)

MCCOY MONUMENT  
Northing (Y) 384197.66  
Easting (X) 681408.83

Base Station - 22 182W  
Northing (Y) 408053.25  
Easting (X) 679287.00



■ = LOCATION CORNER  
Corner I.D. S 1/4 10  
T 17 N R 2 W  
Town of Adrian  
Monroe County, WI.

All distances are shown in U.S. Survey Feet.  
Ties are to 60D nails set in trees.  
Bearings are for tie reference purposes only.  
Coordinates were derived from RTK GNSS procedures.

21702100020

I, Harley A. Sime, do hereby certify that on the Sixth day of August 19 80, I found (evidence) ~~of the~~ of the North 1/4 corner of Section 15, T 17 N, R 2 W Fourth Principal Meridian, and I re-established said corner according to the Wisconsin Statutes as shown and described hereon.

History of corner establishment since Original Government Survey  
Schroeder (?) found this corner existing in December of 1886. Government surveyors set a boundary marker at this corner during the boundary survey of Fort McCoy during WWII. It was set at an old fence corner.

Description of corner evidence found:

Found corner of record.

Dated this 23rd day of Feb. 19 81.

Harley A. Sime - R.L.S. 355

County Surveyor-Monroe County, Wisconsin.  
Title

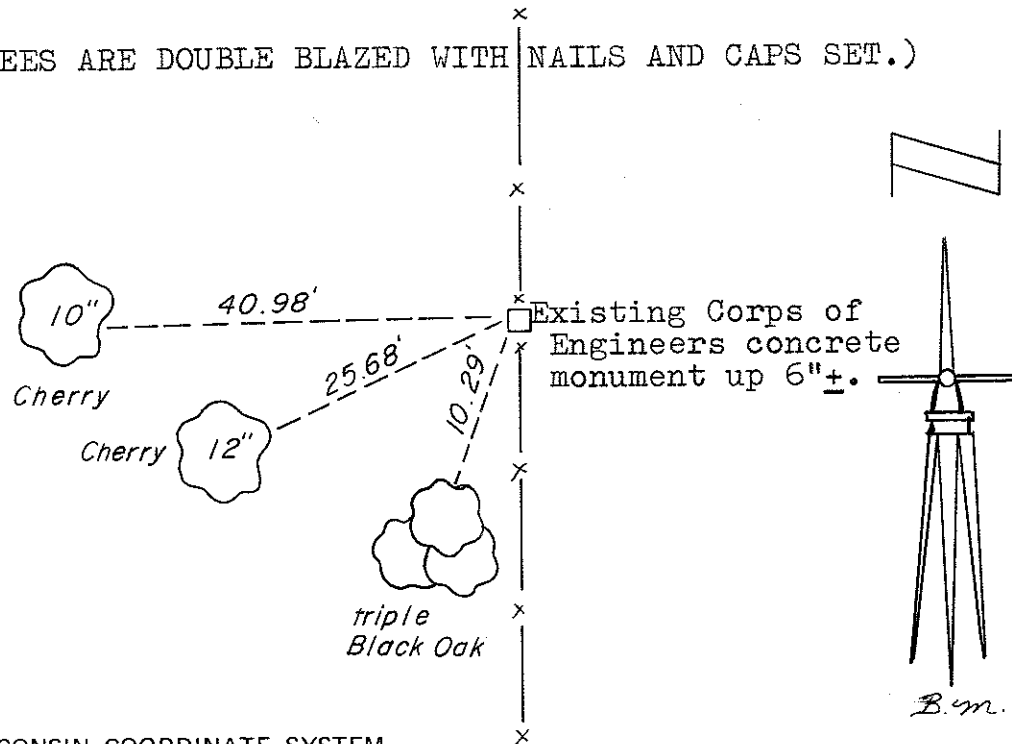
COUNTY SURVEYOR FORM NO. 1

Description of corner and witness monuments, references and accessories used to perpetuate the original or re-established location of this corner:

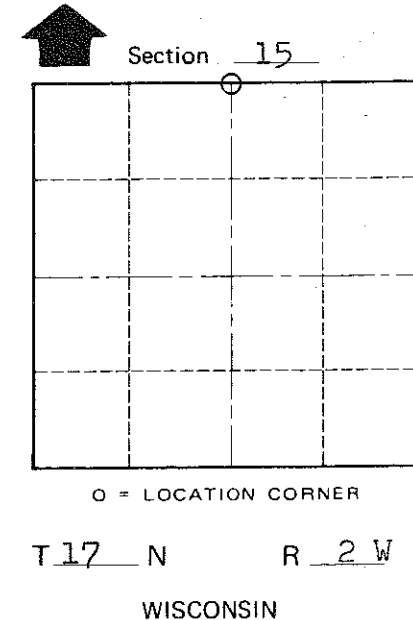
Witnesses to corner location:

Bryan Meyer  
Gary Dechant  
Carl Pietz

(ALL TREES ARE DOUBLE BLAZED WITH NAILS AND CAPS SET.)



Approved: **HARLEY A. SIME**  
**MONROE CO. SURVEYOR**



SURVEY CONTROL ORDER

Horizontal	_____
Vertical	_____

WISCONSIN COORDINATE SYSTEM

Corner	East (X)	North (Y)	Elevation (Z)	Zone
Control Sta. Name				

~~Village of~~ Town of Adrian  
County of Monroe  
Wisconsin