

CERTIFICATE

I, Nicholas M. Hillmer, do hereby certify that this document and the data contained herein was prepared by me or under my direct supervision and that I am a duly Licensed Land Surveyor under the laws of the State of Wisconsin.

Dated this 21st day of May, 2013



Nicholas M. Hillmer, P.L.S. 2909
Anderson Engineering of Minnesota, LLC.

CERTIFIED LAND CORNER

History of corner established since Original Government Survey

Kenyon was at this corner in December of 1886. The 1940's McCoy boundary notes show a corner at this location. In December of 1982, William Jung found a McCoy boundary monument and accepted it as the corner.

Description of evidence found

On August 30th, 2012, Anderson Engineering of Minnesota located the McCoy monument, a 4 inch U.S. Army Corps of Engineers survey control mark disk set in concrete 0.7 feet above grade. The concrete is marked U.S. on the south side.

No. 21702092000



Description of corner and witness monuments, references and accessories used to perpetuate the original or re-established location of this corner:

Witnesses to corner location:

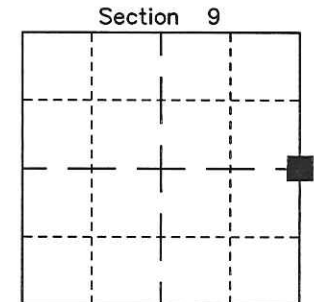
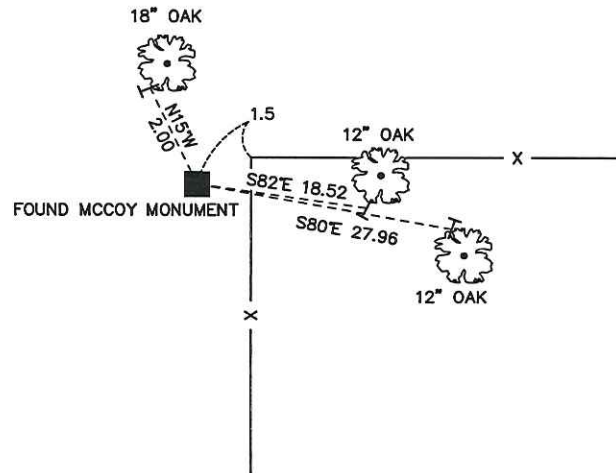
Nick Hillmer
Josh Oslund
Dan Greenwald



MONROE COUNTY
COORDINATE SYSTEM
NAD 1983 (2007)

MCCOY MONUMENT
Northing (Y) 386818.49
Easting (X) 678788.72

Base Station - 22 182W
Northing (Y) 408053.25
Easting (X) 679287.00



■ = LOCATION CORNER
Corner I.D. E 1/4 9
T 17 N R 2 W
Town of Adrian
Monroe County, WI.

All distances are shown in U.S. Survey Feet.
Ties are to 60D nails set in trees.
Bearings are for tie reference purposes only.
Coordinates were derived from RTK GNSS procedures.

21702092000

I, William C. Jung, do hereby certify that on the 29th day of December, 19 82, I found (evidence) ~~no evidence~~ of the West 1/4 corner of Section 10, T 17 N, R 2 W Fourth Principal Meridian, and I re-established said corner according to the Wisconsin Statutes as shown and described hereon.

History of corner establishment since Original Government Survey

Kenyon (?) was at this corner in December of 1886. According to the Camp McCoy boundary notes, a monument was either found or set at this corner.

Description of corner evidence found:

I found an old McCoy boundary marker which I accepted as the corner. This monument fits the occupied conditions very well.

Dated this 27th day of Jan., 19 83.

William C. Jung

Deputy County Surveyor
Title

Approved: HARLEY A. SIME
MONROE CO. SURVEYOR

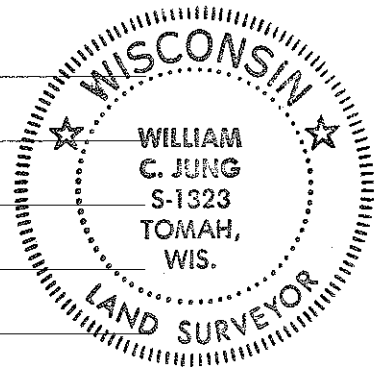
COUNTY SURVEYOR FORM NO. 1

Description of corner and witness monuments, references and accessories used to perpetuate the original or re-established location of this corner:

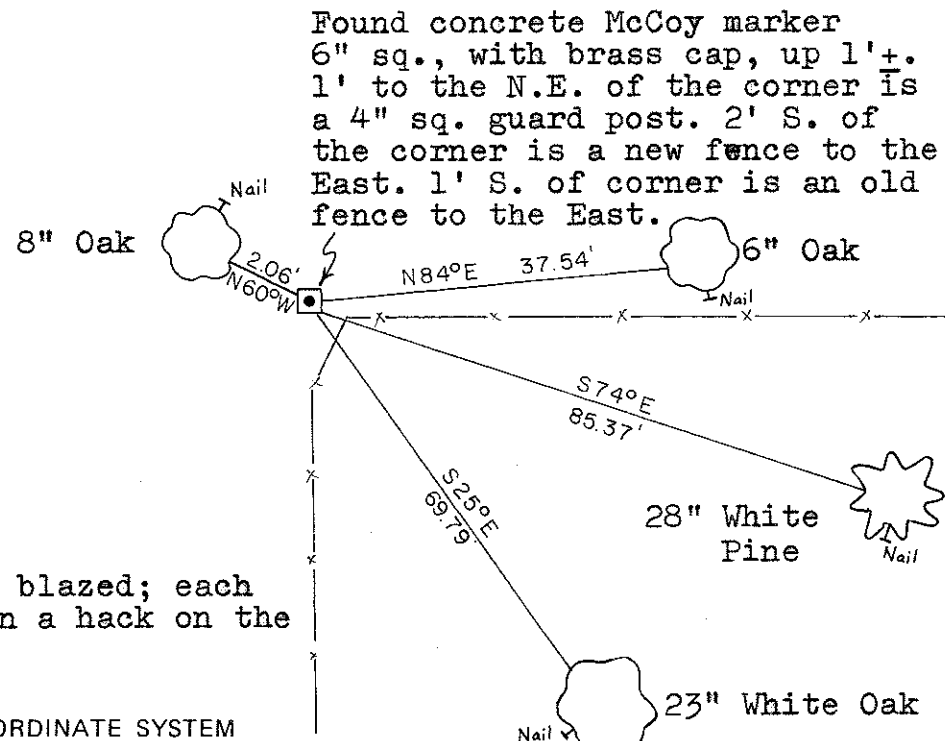
Witnesses to corner location:

Jung

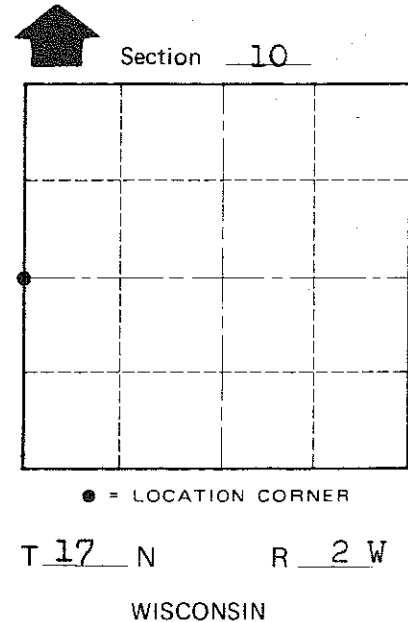
Meyer



FIRE TRAIL



Found concrete McCoy marker 6" sq., with brass cap, up 1'+. 1' to the N.E. of the corner is a 4" sq. guard post. 2' S. of the corner is a new fence to the East. 1' S. of corner is an old fence to the East.



All B.T.'s double blazed; each dist. to a nail in a hack on the side of the tree.

SURVEY CONTROL ORDER

Horizontal	_____
Vertical	_____

WISCONSIN COORDINATE SYSTEM

Corner	East (X)	North (Y)	Elevation (Z)	Zone
Control Sta. Name				

~~City, Village or~~ Town of Adrian
County of Monroe