

CERTIFICATE

I, Nicholas M. Hillmer, do hereby certify that this document and the data contained herein was prepared by me or under my direct supervision and that I am a duly Licensed Land Surveyor under the laws of the State of Wisconsin.

Dated this 23rd day of May, 2013



Nicholas M. Hillmer, P.L.S. 2909
Anderson Engineering of Minnesota, LLC.

CERTIFIED LAND CORNER

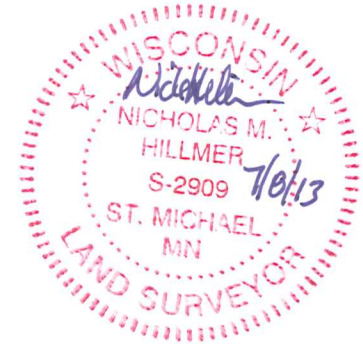
History of corner established since Original Government Survey

Henry Schroeder was here in May of 1883. In November of 1940 Ray Hurlburt set an auto steering post using both original bearing trees. Bryan Meyer found Hurlburt's monument in 1983 and accepted it as the corner.

Description of evidence found

On February 21, 2013, Anderson Engineering of Minnesota located the axle shaft 0.8 feet above grade. The monument is a 1 1/2 inch axle rod with a 5/8 inch shaft projecting out of the axle rod.

No. 21702032000



Description of corner and witness monuments, references and accessories used to perpetuate the original or re-established location of this corner:

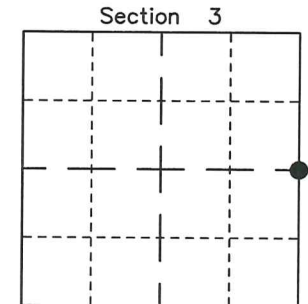
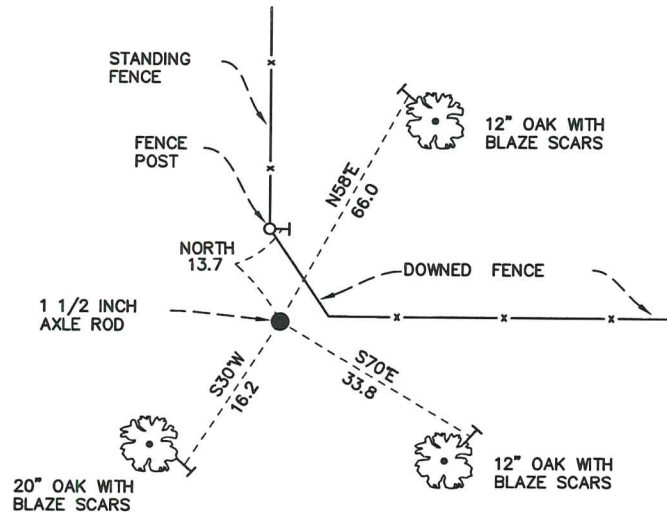
Witnesses to corner location:

Nick Hillmer
Josh Oslund
Dan Greenwald

MONROE COUNTY
COORDINATE SYSTEM
NAD 1983 (2007)

AXLE SHAFT
Northing (Y) 392136.82
Easting (X) 684027.77

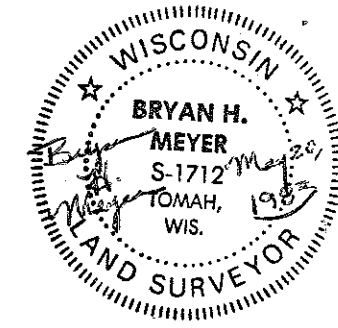
Base Station - 22 182W
Northing (Y) 408053.25
Easting (X) 679287.00



● = LOCATION CORNER
Corner I.D. E 1/4 3
T 17 N R 2 W
Town of Adrian
Monroe County, WI.

All distances are shown in U.S. Survey Feet.
Ties are to 60D nails set in trees.
Bearings are for tie reference purposes only.
Coordinates were derived from RTK GNSS procedures.

21702032000



I, Bryan H. Meyer, do hereby certify that on the 20th day of May 1983, I found (evidence) ~~no evidence~~ of the West 1/4 corner of Section 2, T 17 N, R 2 W Fourth Principal Meridian, and I re-established said corner according to the Wisconsin Statutes as shown and described hereon.

Dated this 20th day of May 1983.

Bryan H. Meyer
Deputy County Surveyor
Title

History of corner establishment since Original Government Survey
Henry Schroeder was here in May of 1883. Ray Hurlburt was here in November of 1940 and set an auto steering post off both original bearing tree stumps.

Description of corner evidence found:

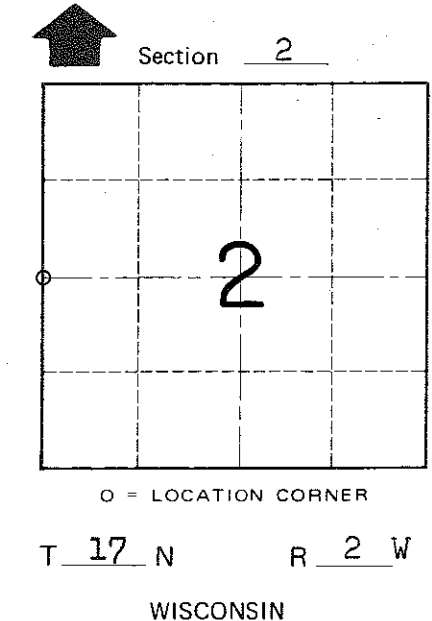
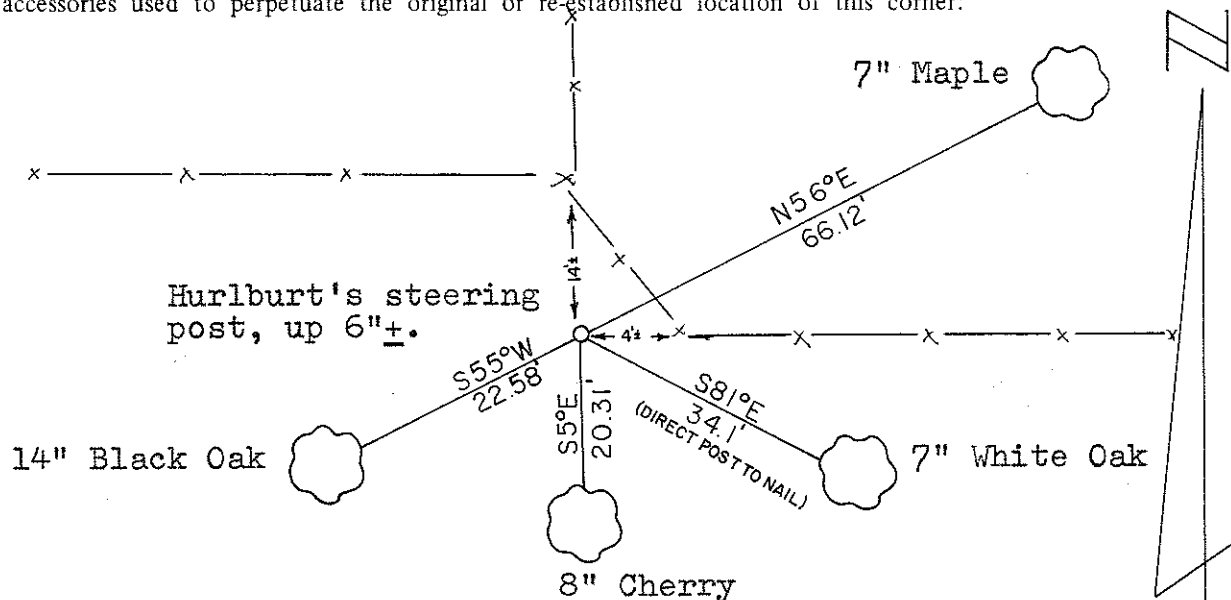
Found a 1 1/2"x46" iron shaft with a large gear-like mechanism attached to the bottom to anchor it. This marker is up 6". I accepted this as Hurlburt's steering post marking the corner.

COUNTY SURVEYOR FORM NO. 1

Description of corner and witness monuments, references and accessories used to perpetuate the original or re-established location of this corner:

Date: May 20, 1983 - 10:00 A.M.
Weather: P. Cloudy, Nice, 60°±.
Crew: Meyer
Witnesses to corner location:

Bryan H. Meyer - R.L.S. 1712



Approved: HARLEY A. SIME
MONROE CO. SURVEYOR

SURVEY CONTROL ORDER

Horizontal	_____
Vertical	_____

The four bearing trees shown are double blazed with the blazes facing the corner. Each tree is also hacked in the side with a nail set in the hack. The distances shown are from the nails to the corner.

WISCONSIN COORDINATE SYSTEM

Corner	East (X)	North (Y)	Elevation (Z)	Zone
Control Sta. Name				

~~City, Village or~~ Town of Adrian
County of Monroe