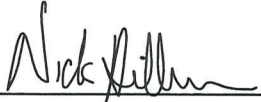


CERTIFICATE

I, Nicholas M. Hillmer, do hereby certify that this document and the data contained herein was prepared by me or under my direct supervision and that I am a duly Licensed Land Surveyor under the laws of the State of Wisconsin.

Dated this 23rd day of May, 2013



Nicholas M. Hillmer, P.L.S. 2909
Anderson Engineering of Minnesota, LLC.

CERTIFIED LAND CORNER

History of corner established since Original Government Survey

Webster Kenyon was here in December of 1886. The Fort McCoy notes indicate that someone from the Government agency was here sometime in the 1940's. In July of 1997 Bryan Meyer found no physical evidence of the corner. Meyer re-established the corner by placing a True Cast Products monument on line and two-thirds of the way between the the northeast corner and N1/16NW corner of Section 10.

Description of evidence found

On February 21st, 2013, Anderson Engineering of Minnesota located the True Cast Products monument 9 inches below grade in the swale of a field.

No. 21702030020



Description of corner and witness monuments, references and accessories used to perpetuate the original or re-established location of this corner:

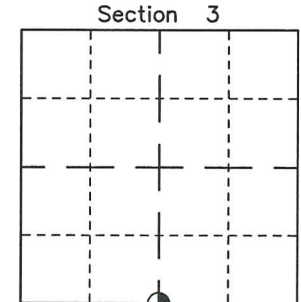
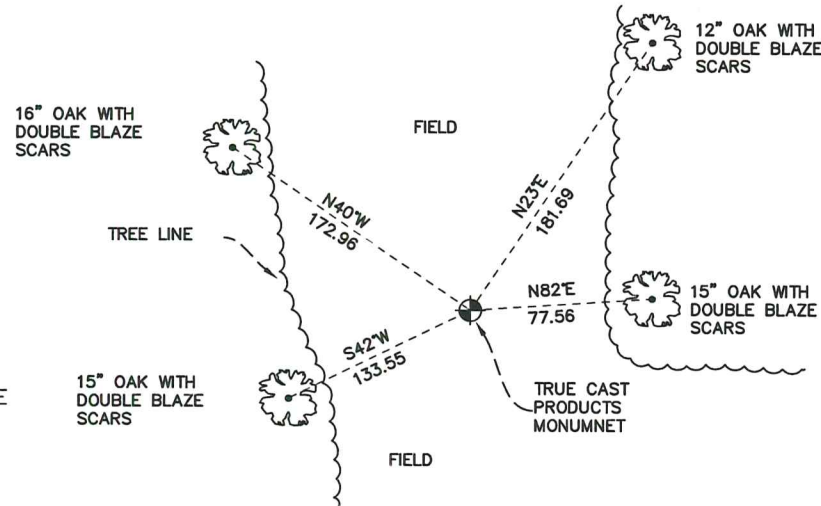
Witnesses to corner location:

Nick Hillmer
Dan Greenwald

MONROE COUNTY
COORDINATE SYSTEM
NAD 1983 (2007)

TRUE CAST PRODUCTS MONUMENT
Northing (Y) 389459.06
Easting (X) 681349.97

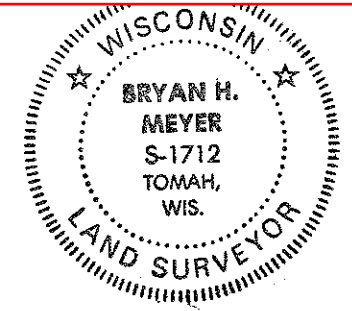
Base Station - 22 182W
Northing (Y) 408053.25
Easting (X) 679287.00



☉ = LOCATION CORNER
Corner I.D. S 1/4 3
T 17 N R 2 W
Town of Adrian
Monroe County, WI.

All distances are shown in U.S. Survey Feet.
Bearings are for tie reference purposes only.
Coordinates were derived from RTK GNSS procedures.

21702030020



Bryan H. Meyer
H. A. Sime and Associates
P. O. Box 50
Tomah, Wisconsin 54660
Phone: (608)-372-5392

I, Bryan H. Meyer, do hereby certify that on the 3rd day of July 19 97, I found ~~evidence~~ (no evidence) of the North 1/4 corner of Section 10, T 17 N, R 2 W Fourth Principal Meridian, and I re-established said corner according to the Wisconsin Statutes as shown and described hereon.

Dated this 8th day of July 19 97.

Bryan H. Meyer
Deputy County Surveyor
Title

History of corner establishment since Original Government Survey

Webster Kenyon was here in December of 1886. Fort McCoy notes indicate that someone from that government agency was here sometime in the 1940s.

Description of corner evidence found:

No physical evidence of the corner location was found. I found Hurlburt's monument at the Northeast corner of Section 10. I found a brass cap in concrete at the N1/16NW corner of Section 10. I re-established this corner on line and two-thirds of the way between the Northeast corner and the N1/16NW corner of Section 10.

COUNTY SURVEYOR FORM NO. 1

Description of corner and witness monuments, references and accessories used to perpetuate the original or re-established location of this corner:

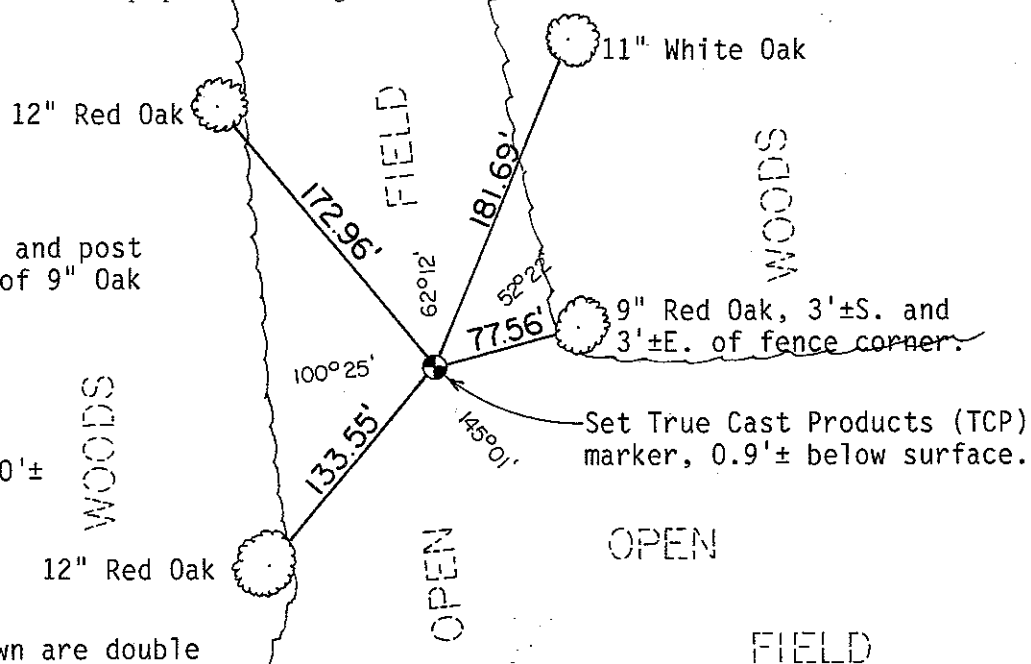
Crew: Meyer, Malliet
Date: July 3, 1997 - 10:30 A.M.
Weather: Overcast, Damp, 65°±
Witnesses to corner location:

Bryan H. Meyer

Douglas Malliet

NOTE: Set sign and post on South side of 9" Oak tree.

SCALE: 1" = 100'±



NOTE: The four trees shown are double blazed; the distance to each tree is to a nail set in a hack in the side of each tree.

WISCONSIN COORDINATE SYSTEM

SURVEY CONTROL ORDER

Horizontal	_____
Vertical	_____

Corner	East (X)	North (Y)	Elevation (Z)	Zone
Control Sta. Name				

~~City, Village or~~ Town of Adrian
County of Monroe

