


CERTIFICATE

I, Nicholas M. Hillmer, do hereby certify that this document and the data contained herein was prepared by me or under my direct supervision and that I am a duly Licensed Land Surveyor under the laws of the State of Wisconsin.

Dated this 23rd day of May, 2013



Nicholas M. Hillmer, P.L.S. 2909
Anderson Engineering of Minnesota, LLC.

CERTIFIED LAND CORNER

History of corner established since Original Government Survey

In 1973 Harley A. Sime found an auto axle set by Hurlburt in 1940. Sime also found an auto steering post 10 links south and up 1 foot near a fence. Sime accepted Hurlburt's monument and set a 1 inch axle shaft at it's location. Bryan Meyer located Sime's monument in good condition at the south edge of the blacktop in May of 1995.

Description of evidence found

On September 26th, 2012, Anderson Engineering of Minnesota located the 1 inch axle shaft on the south edge of bit 1 1/2 inches below grade.

No. 21702030000



Description of corner and witness monuments, references and accessories used to perpetuate the original or re-established location of this corner:

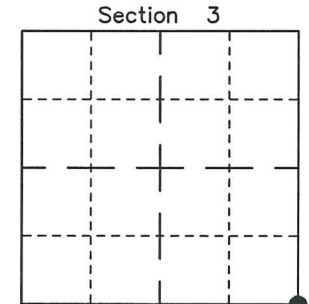
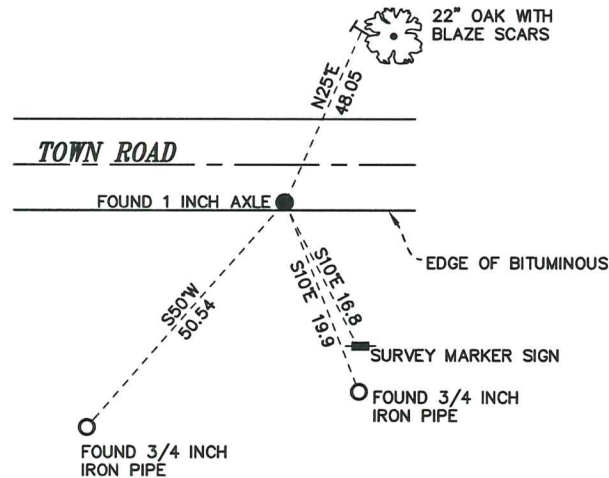
Witnesses to corner location:

Nick Hillmer
Josh Oslund
Dan Greenwald

MONROE COUNTY
COORDINATE SYSTEM
NAD 1983 (2007)

1 INCH AXLE SHAFT
Northing (Y) 389501.92
Easting (X) 683970.32

Base Station - 22 182W
Northing (Y) 408053.25
Easting (X) 679287.00



● = LOCATION CORNER
Corner I.D. SE 3
T 17 N R 2 W
Town of Adrian
Monroe County, WI.

All distances are shown in U.S. Survey Feet.
Bearings are for tie reference purposes only.
Coordinates were derived from RTK GNSS procedures.

I, Harley A. Sime, do hereby certify that on the 25th day of May 19 73, I found (evidence) (~~no evidence~~) of the NE corner of Section 10, T 17 N, R 2 W, Fourth Principal Meridian, and I re-established said corner according to the Wisconsin Statutes as shown and described hereon.

Dated this 22 day of March 19 77.

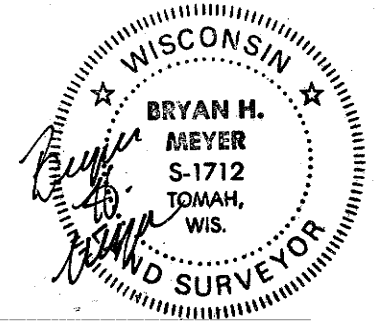
County Surveyor
Title

History of original corner establishment:

Description of corner evidence found:

Found auto axle set by Hurlburt in 1940, down 8".
Also found auto steering post 10 links south and up 1' near fence.

UPDATE: Found monument of record in good condition, down 25"± at South edge of blacktop. Established new ties as illustrated below.



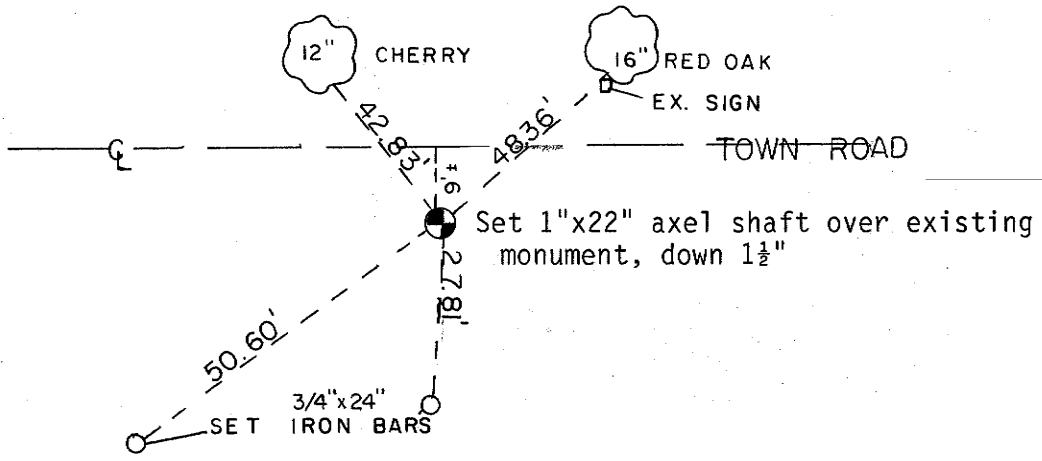
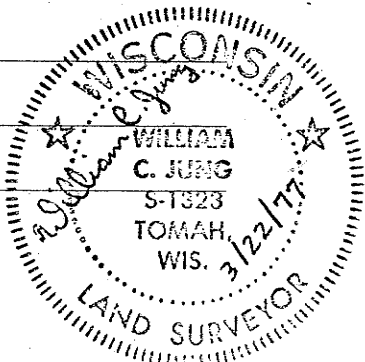
Description of corner and witness monuments, references and accessories used to perpetuate the original or re-established location of this corner: Bryan Meyer 4 May 1995

Northeast corner found auto axle.

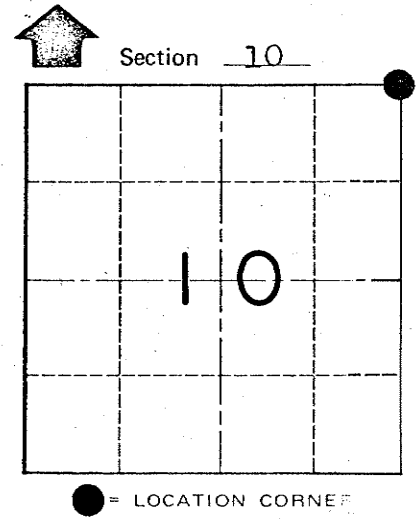
Witnesses to corner location:

Marten
Felber
Jung, Malliet

CREW: Bryan Meyer
Donald Cooper
4 May 1995



Both trees show are double blazed with the blazes facing the corner. the distance to each tree is to a nail set in a hack in the side of tree.



WISCONSIN
H. A. Sime and Associates
P. O. Box 50
Tomah, Wisconsin 54660
Phone: (608)-372-5392

Sketch drafted by Harold Haberlin

WISCONSIN COORDINATE SYSTEM

SURVEY CONTROL ORDER		WISCONSIN COORDINATE SYSTEM			
Horizontal _____		East (X)	North (Y)	Elevation (Z)	Zone
Vertical _____		Corner			
		Control Sta. Name			

City, Village or Town Adrian
County of Monroe

COUNTY SURVEYOR FORM NO. 1