

CERTIFICATE

I, Harley A. Sime, do hereby certify that on the 21 day of August 1975, I found (evidence) (~~no evidence~~) of the C/4 corner of Section 2, T 17 N, R 2 W Fourth Principal Meridian, and I re-established said corner according to the Wisconsin Statutes as shown and described hereon.

Dated this 21 day of March 1977.

County Surveyor
Title

CERTIFIED LAND CORNER

History of original corner establishment:

Schroeder set post in 1883.

Description of corner evidence found:

Found auto axle set by Ray Hurlburt in November, 1940.

No. 18 B

21702022020

Description of corner and witness monuments, references and accessories used to perpetuate the original or re-established location of this corner:

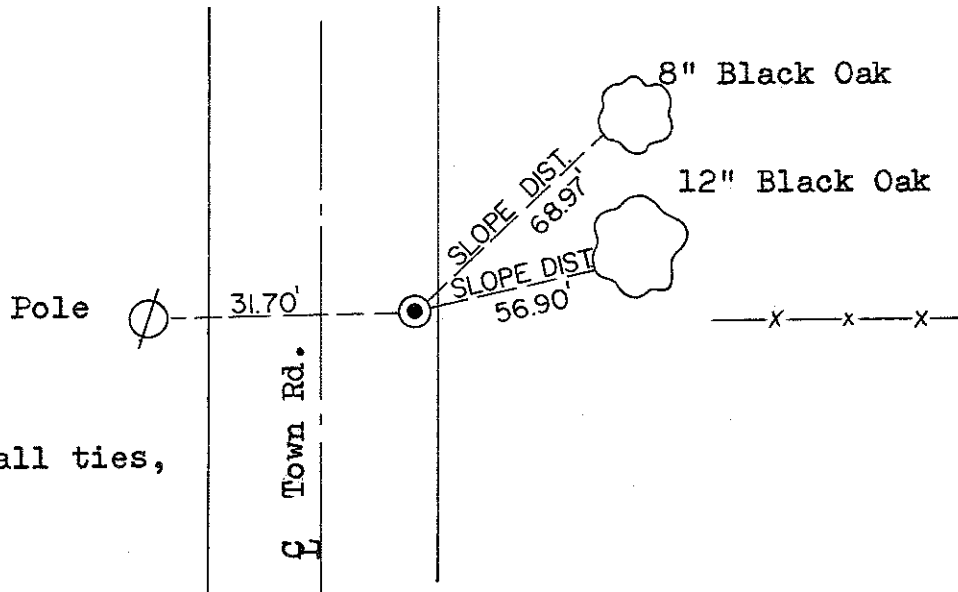
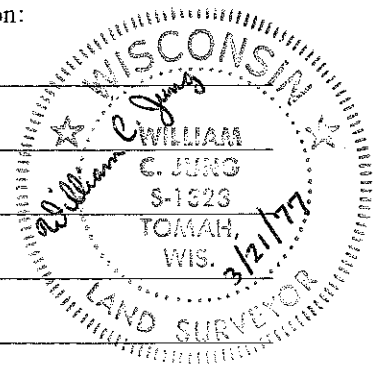
Found auto axle down 2.6', set 3/4"x24" iron bar on top, down 0.6' corner is 3' west of east edge of asphalt.

Witnesses to corner location:

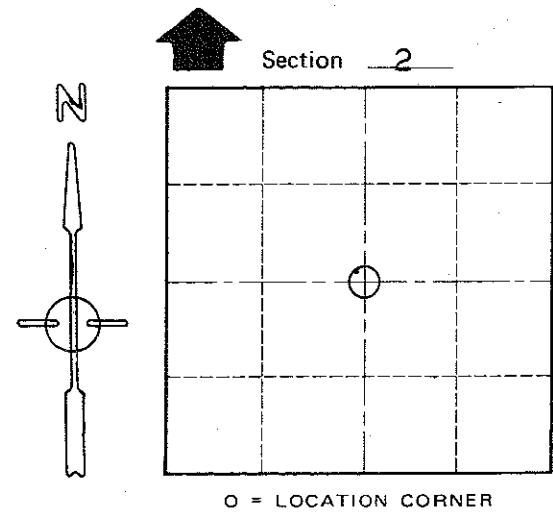
Jung

Malliet

Sime



(note nail & cap set in all ties, trees blazed)



T 17 N R 2 W
WISCONSIN

COUNTY SURVEYOR FORM NO. 1

SURVEY CONTROL ORDER

Horizontal	_____
Vertical	_____

WISCONSIN COORDINATE SYSTEM

Corner	East (X)	North (Y)	Elevation (Z)	Zone
Control Sta. Name				

City, Village or Town Adrian

County of Monroe

O.K.