

33

**U.S. PUBLIC LAND CORNER
MAINTENANCE**

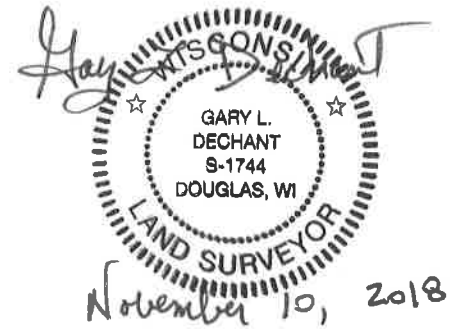
**Corner ID : NW Sec.7, T17N-R1W
21702010000**

DATE	CREW	MONUMENT TYPE -----
November 1, 2018	Zachariah P. Dechant Gary L. Dechant	Existing 1-1/8" round iron bar, flush in center of CTH "M" Gladeview intersection

References:

	<u>Bearing</u>	<u>Distance</u>
1) Set 3/4"x24" round iron bar, down 12" in field	N54E	52.05'
2) Set 3/4"x 24" round iron bar, down 12" in field, 7' north of 8" pipe for liquid manure slurry system	S49E	45.78'
3) Set 3/4"x24" round iron bar, down 12" in field	S54W	60.92'
4) Set 3/4"x24" round iron bar, down 12" in field	N49W	62.00'

Harrison & reference markers set on straight lines.



I, W. C. Jung, do hereby certify that on the 25th day of September 1979, I found (evidence) ~~(no evidence)~~ of the Northwest corner of Section 7, T 17 N, R 1 W Fourth Principal Meridian, and I re-established said corner according to the Wisconsin Statutes as shown and described hereon.

Dated this 30th day of Dec. 1980.

William C. Jung

William C. Jung
Title

R.L.S. 1323

History of corner establishment since Original Government Survey

H. A. Sime set a 3/4" iron bar here on April 9, 1970. Duane Marten used this iron bar in his survey of June of 1971 as did Doug Malliet in his survey of October, 1976.

Description of corner evidence found:

Found a 3/4" iron bar. Removed it and set a Harrison marker, flush with the pavement. Accepted the corner of record.

**See Reverse Side
For Maintenance**

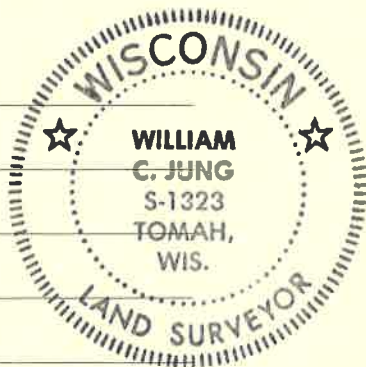
Description of corner and witness monuments, references and accessories used to perpetuate the original or re-established location of this corner:

Found a 3/4" Iron Bar. Removed it and set a Harrison marker, flush with the pavement.

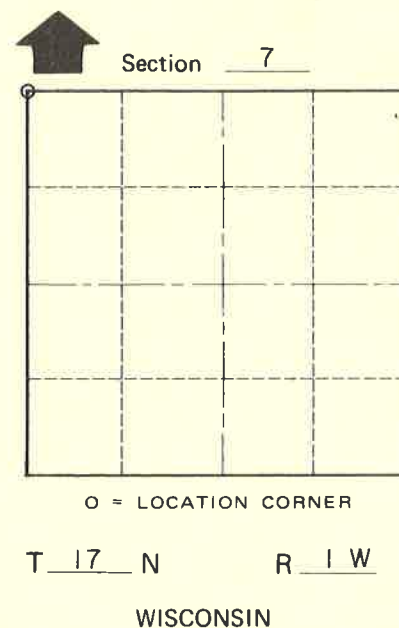
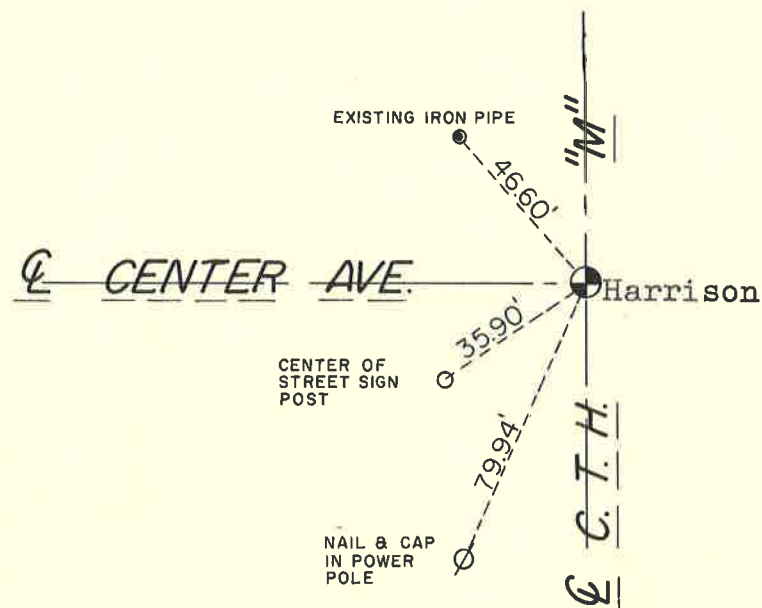
Witnesses to corner location:

Jung

Tormoen



**Approved: HARLEY A. SIME
MONROE CO. SURVEYOR**



SURVEY CONTROL ORDER

Horizontal	_____
Vertical	_____

WISCONSIN COORDINATE SYSTEM

Corner	East (X)	North (Y)	Elevation (Z)	Zone
Control Sta. Name				

_____ or Town Tomah
County of Monroe

COUNTY SURVEYOR FORM NO. 1