

# 15

**U.S. PUBLIC LAND CORNER  
MAINTENANCE**

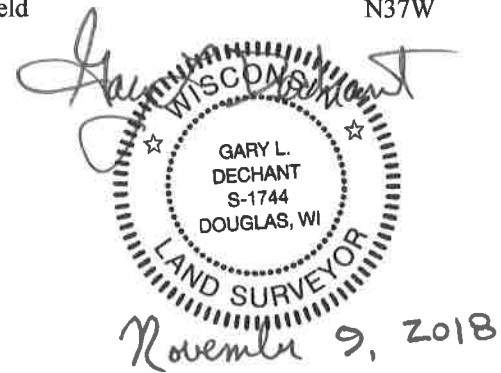
**Corner ID : W1/4 Sec.5, T17N-R1W**

**21701062000**

<u>DATE</u>	<u>CREW</u>	<u>MONUMENT TYPE</u> -----
October 31, 2018	Zachariah P. Dechant Gary L. Dechant	Existing Harrison intact, 15' west of Gondola Road, down 6". On line with south edge of driveway 13424 Gondola

References:

	<u>Bearing</u>	<u>Distance</u>
1) Existing 1" iron pipe in lawn, 24' east of road (1992 tie)	N53E	47.91'
2) Existing 1" iron pipe 39' east of road, 27' north of driveway 13446 (1992 tie) SE	SE	78.49'
3) Set 3/4"x24" round iron bar, down 10" in field	S55W	23.23'
4) Set 3/4"x24" round iron bar, down 10" in field	N37W	31.62'



I, Garold A. Sime, do hereby certify that on the 5th day of March 1992, I found (evidence) ~~(XXXXXX)~~ of the W/4 corner of Section 5, T 17 N, R 1 W Fourth Principal Meridian, and I re-established said corner according to the Wisconsin Statutes as shown and described hereon.

Dated this 5th day of March 1992.

Garold A. Sime

Monroe County Surveyor

Title

History of corner establishment since Original Government Survey

This corner has been used and accepted by Wm. Bandow in 1975, James Denzine in 1978, Ron Parish in 1986 and Lawrence Feddersen in 1991.

Description of corner evidence found:

Lawrence Feddersen notified me that this corner could not be found in Jan. of 1991. I located the lower portion of the Harrison Monument still intact. I removed this portion and set a new cast iron Harrison Monument and referenced same.

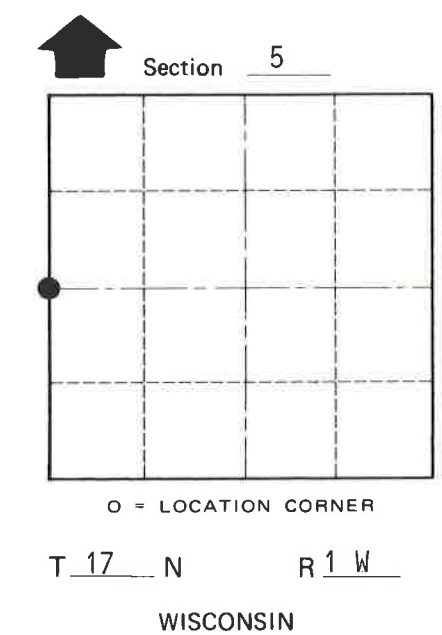
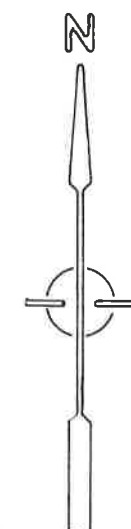
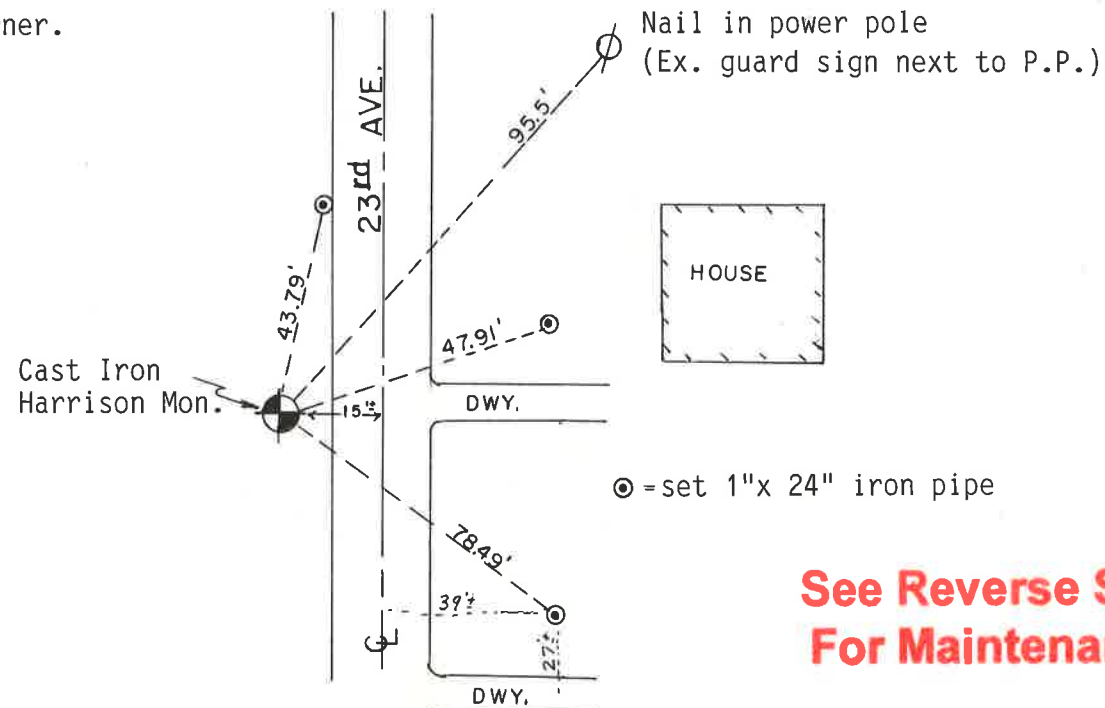
Description of corner and witness monuments, references and accessories used to perpetuate the original or re-established location of this corner:

Set cast iron Harrison Monument at corner.

Witnesses to corner location:

Garold A. Sime, R.L.S.

John Kenworthy



**See Reverse Side  
For Maintenance**

COUNTY SURVEYOR FORM NO. 1

SURVEY CONTROL ORDER

Horizontal \_\_\_\_\_  
Vertical \_\_\_\_\_

WISCONSIN COORDINATE SYSTEM				
Corner	East (X)	North (Y)	Elevation (Z)	Zone
Control Sta. Name				

~~City, Village~~ or Town of Tomah  
County of Monroe

*See New Sheet*

I, Harley A. Sime, do hereby certify that on the 14th day of July 1978, I found (evidence) ~~(no evidence)~~ of the W<sup>1/4</sup> corner of Section 5, T 17 N, R 1 W Fourth Principal Meridian, and I re-established said corner according to the Wisconsin Statutes as shown and described hereon.

Dated this 11th day of Jan. 1979.

Harley A. Sime, R.L.S. 355

County Surveyor

Title

History of original corner establishment:

No known recorded history since the original government survey.

Description of corner evidence found:

Found iron pipe and replaced it with a Harrison Monument.

**The iron pipe had been used as the corner in previous survey work.**

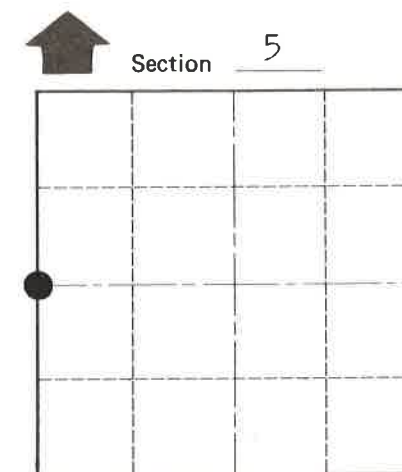
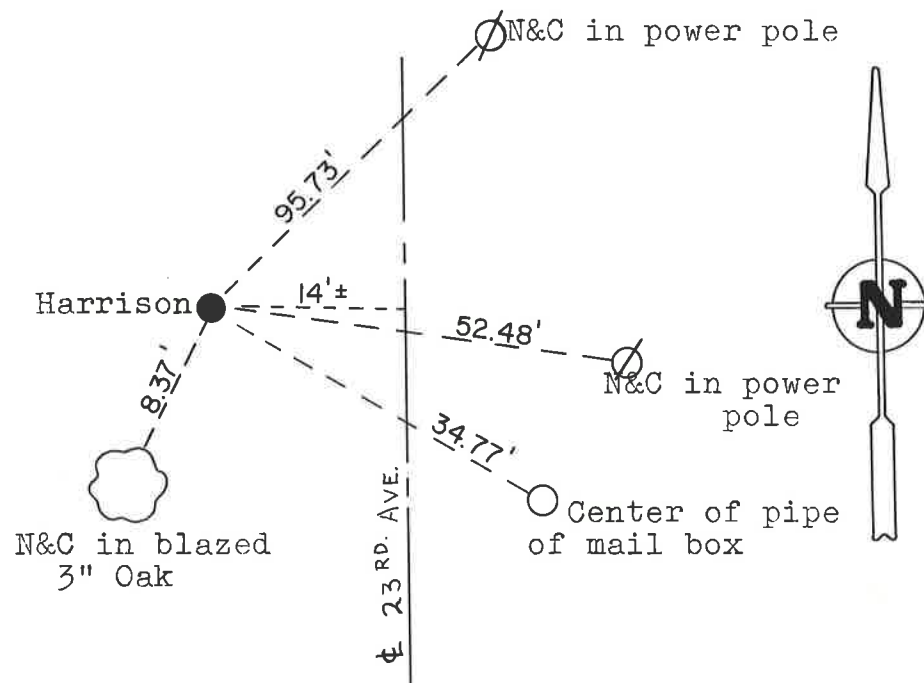
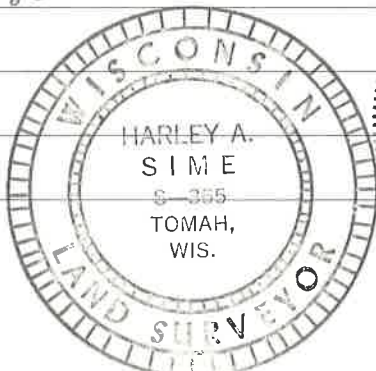
**See Reverse Side For Maintenance**

Description of corner and witness monuments, references and accessories used to perpetuate the original or re-established location of this corner:

Witnesses to corner location:

G. Dechant, Crew Chief

B. Meyer



● = LOCATION CORNER  
T 17 N R 1 W  
WISCONSIN

SURVEY CONTROL ORDER

Horizontal	_____
Vertical	_____

WISCONSIN COORDINATE SYSTEM

Corner	East (X)	North (Y)	Elevation (Z)	Zone
Control Sta. Name				

City, Village or Town Tomah

County of Monroe

COUNTY SURVEYOR FORM NO. 1