

17

**U.S. PUBLIC LAND CORNER
MAINTENANCE**

Corner ID : E1/4 Sec.4, T17N-R1W

21701042000

<u>DATE</u>	<u>CREW</u>	<u>MONUMENT TYPE</u> -----
September 9, 2016	Zachariah P. Dechant Gary L. Dechant	Existing Harrison intact in center line of King Ave Approx. 70' north of King Ave/Monroe St. intersection

References:

	<u>Bearing</u>	<u>Distance</u>
1) Set 3/4"x24" round iron bar, down 6", 15' north of 12" Maple	S81E	44.23'
2) Set 3/4"x24" round iron bar, 6' south of same 12" Maple	S60E	53.42'
3) Existing 3/4" round iron bar, Block corner SE quad Monroe/King inter.	S20E	111.29'
4) Existing 1" iron pipe, Block corner SW quad Monroe/King inter	S20W	112.08'
5) Set 3/4"x24" round iron bar, down 4", 7' east of SE corner of house 717 King Ave	N81W	59.11'
6) Set 3/4"x24" round iron bar, down 6", 6' east of NE corner of house 717 King Ave	N60W	70.29'

Harrison and reference markers 1-5, 2-6 set on straight lines.



I, Harley A. Sime, do hereby certify that on the 8th day of June 1977, I found (evidence) (~~no-evidence~~) of the W¹/₄ corner of Section 3, T 17 N, R 1W Fourth Principal Meridian, and I re-established said corner according to the Wisconsin Statutes as shown and described hereon.

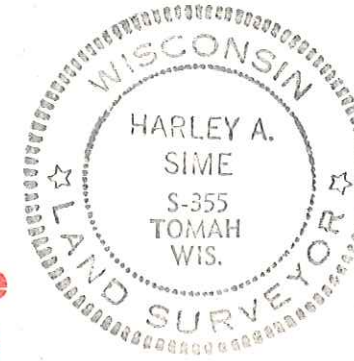
Dated this 9th day of June 1977.

History of original corner establishment:

County Survey Records show that Henry Schroeder was at this corner in 1882.

Description of corner evidence found:

Reset the corner using the data as shown on the plat of "Carol's Addition to J.J. Farmer's Subdivision".



~~County Surveyor~~ **Approved: HARLEY A. SIME**
MONROE CO. SURVEYOR

See Reverse Side For Maintenance

Description of corner and witness monuments, references and accessories used to perpetuate the original or re-established location of this corner:

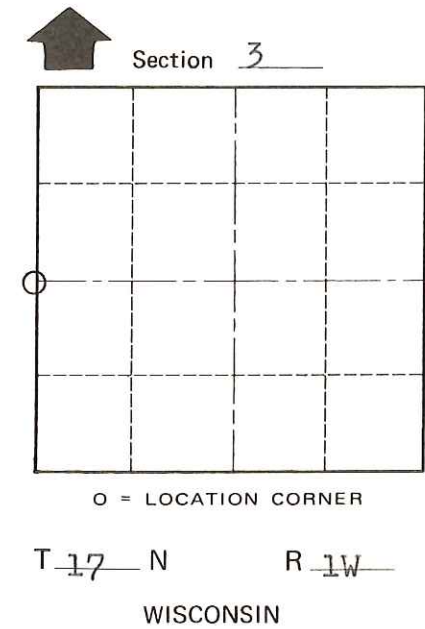
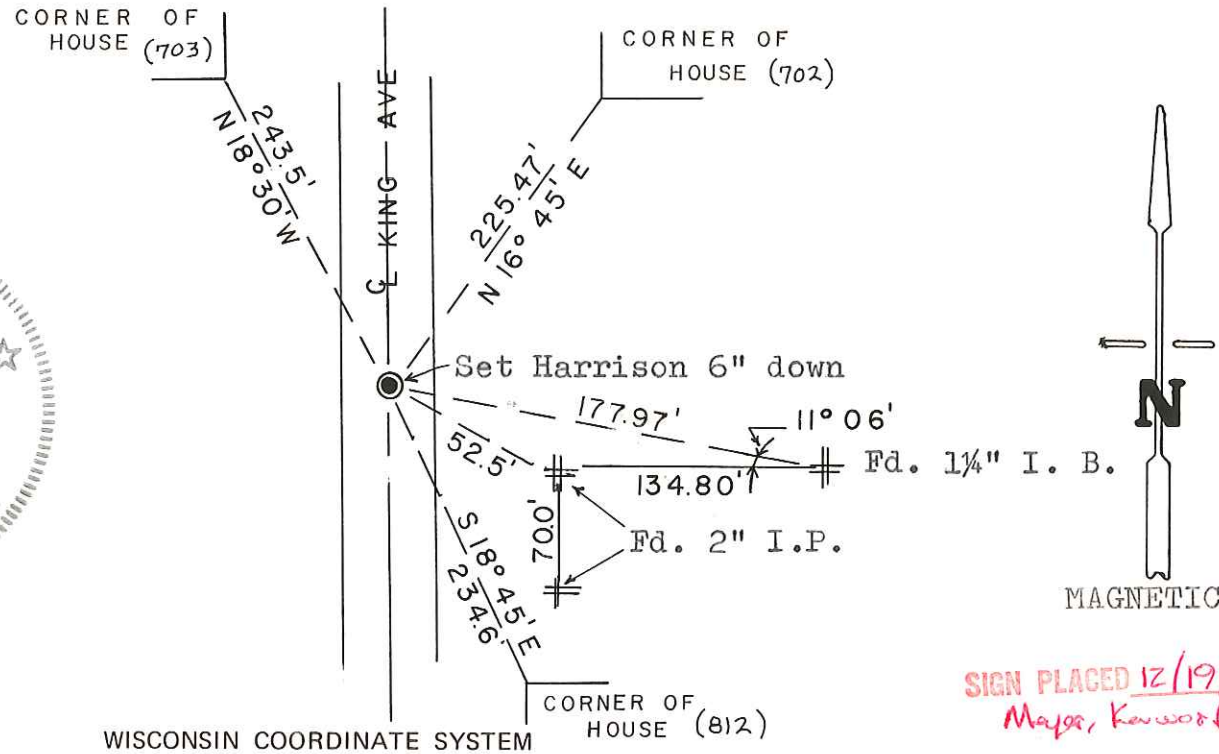
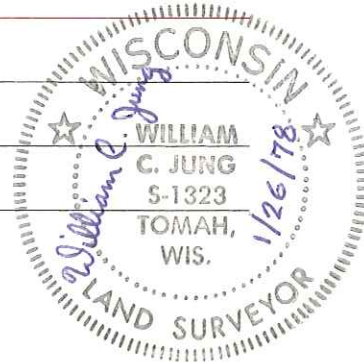
Set a Harrison in the street.

Witnesses to corner location:

G. Dechant

A. Lueck

B. Rasmussen



SIGN PLACED 12/19/86 B.M. Major, Kowalsky

City, Village or Town Tomah

County of Monroe

COUNTY SURVEYOR FORM NO. 1

SURVEY CONTROL ORDER

Horizontal _____

Vertical _____

WISCONSIN COORDINATE SYSTEM				
Corner	East (X)	North (Y)	Elevation (Z)	Zone
Control Sta. Name				