

# 27

**U.S. PUBLIC LAND CORNER  
MAINTENANCE**

**Corner ID : SE Sec. 4 T17N-R1W**

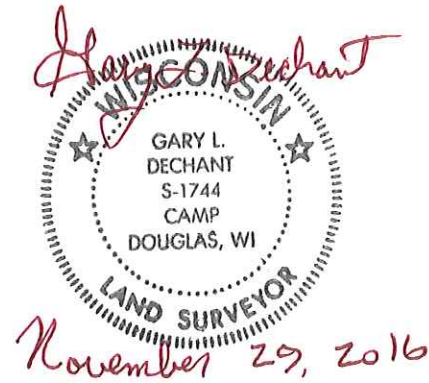
**21701040000**

<u>DATE</u>	<u>CREW</u>	<u>MONUMENT TYPE -----</u>
August 17, 2016	Zachariah P.Dechant Gary L. Dechant	Existing 1½" round iron bar in center line west bound lane USH "12". On line with power line south

References:

	<u>Bearing</u>	<u>Distance</u>
1) Set 3/4"x24" round iron bar, down 6", in grass median strip	S32E	28.20'
2) Set 3/4"x24 round iron bar, down 6", 31.5' south of east bound center line	S32E	98.54'
3)Set 3/4"x24" round iron bar, down 6" in grass median strip	S28W	28.83
4) Set 3/4"x24" round iron bar 28.5' south of east bound center line	S28W	97.70

1½" round iron bar (SE 4) and reference markers set on straight line.



I, Harley A. Sime, do hereby certify that on the 14 day of June 1977, I found (evidence) (~~no evidence~~) of the Southwest corner of Section 3, T. 17 N, R. 1W, Fourth Principal Meridian, and I re-established said corner according to the Wisconsin Statutes as shown and described hereon.

Dated this 14 day of June 1977.

County Surveyor  
Title

History of original corner establishment:

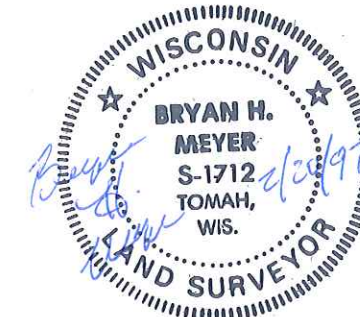
County Survey Records show that Henry Schroeder was at this corner in 1882.

**See Reverse Side  
For Maintenance**

Description of corner evidence found:

Found a brass cap used in previous surveys.

**UPDATE:** In surveying some property to the Southwest, I attempted to tie into this point, but was unable to find it. I believe this portion of highway was repaved since 1977. I reset this corner in its previous location using section information and aquired new ties as shown below.



Bryan H. Meyer  
H. A. Sime and Associates  
P. O. Box 50  
Tomah, Wisconsin 54660  
Phone: (608)-372-5392

Description of corner and witness monuments, references and accessories used to perpetuate the original or re-established location of this corner:

Date: February 20, 1997  
Weather: Overcast, Damp, 35°±

Witnesses to corner location:

Dechant

Lueck

1997 CREW:

Bryan H. Meyer

Douglas J. Malliet

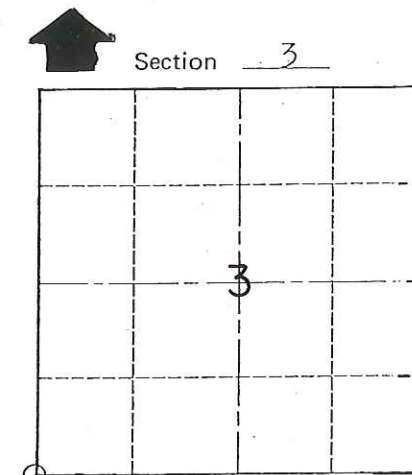
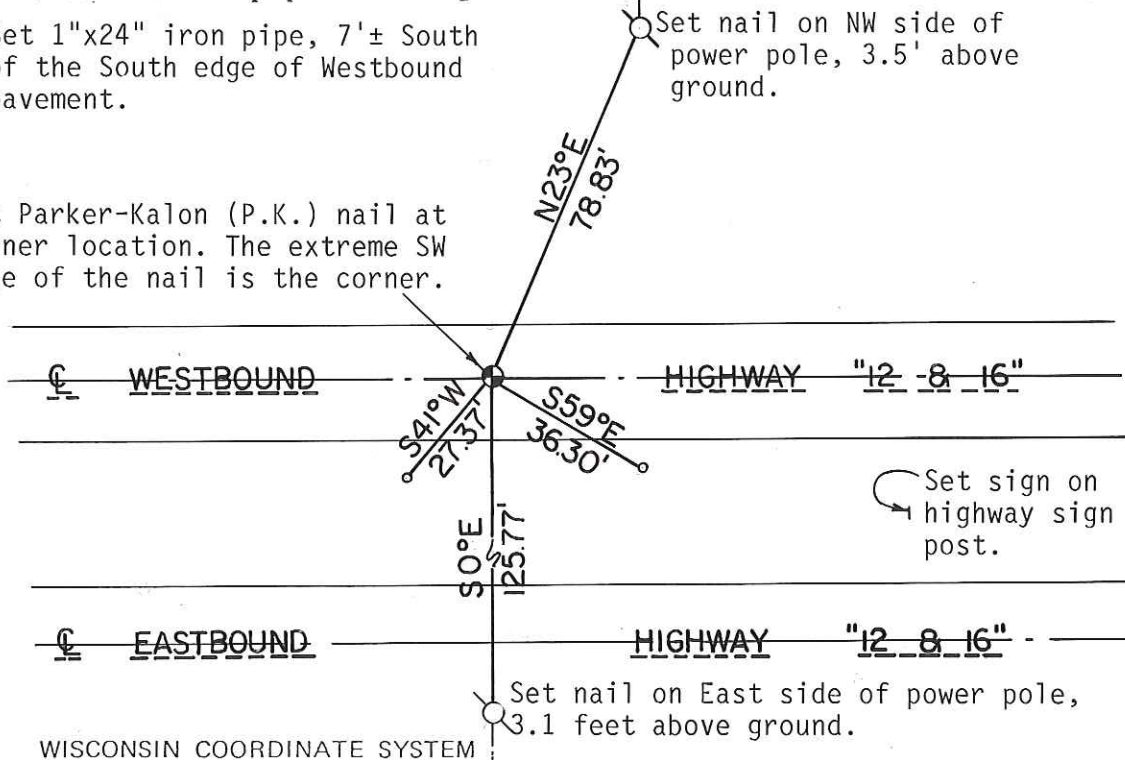
o = Set 1"x24" iron pipe, 7'± South of the South edge of Westbound pavement.

o = Set nail on NW side of power pole, 3.5' above ground.

Set Parker-Kalon (P.K.) nail at corner location. The extreme SW edge of the nail is the corner.

o = Set sign on highway sign post.

o = Set nail on East side of power pole, 3.1 feet above ground.



o = LOCATION CORNER

T 17 N R 1W

WISCONSIN

Reference file number 4314

SURVEY CONTROL ORDER

Horizontal \_\_\_\_\_

Vertical \_\_\_\_\_

WISCONSIN COORDINATE SYSTEM

Corner	East (X)	North (Y)	Elevation (Z)	Zone
Control Sta. Name				

City, ~~Village or Town~~ Tomah

County of Monroe

COUNTY SURVEYOR FORM NO. 1

CERTIFICATE

CERTIFIED LAND CORNER

No. 27

See New Tie Sheet

I, Harley A. Sime, do hereby certify that on the 14 day of June 1977, I found (evidence) (~~no-evidence~~) of the Southwest corner of Section 3, T17 N, R1W, Fourth Principal Meridian, and I re-established said corner according to the Wisconsin Statutes as shown and described hereon.

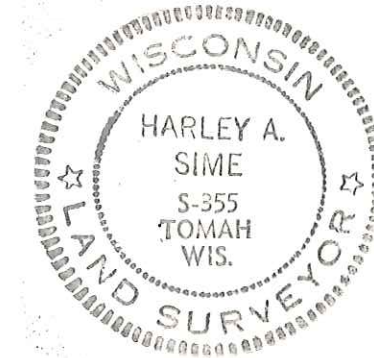
Dated this 14 day of June 1977.

History of original corner establishment:

County Survey Records show that Henry Schroeder was at this corner in 1882.

Description of corner evidence found:

Found a brass cap used in previous surveys.



County Surveyor

Approved: **HARLEY A. SIME**  
**MONROE CO. SURVEYOR**

Description of corner and witness monuments, references and accessories used to perpetuate the original or re-established location of this corner:

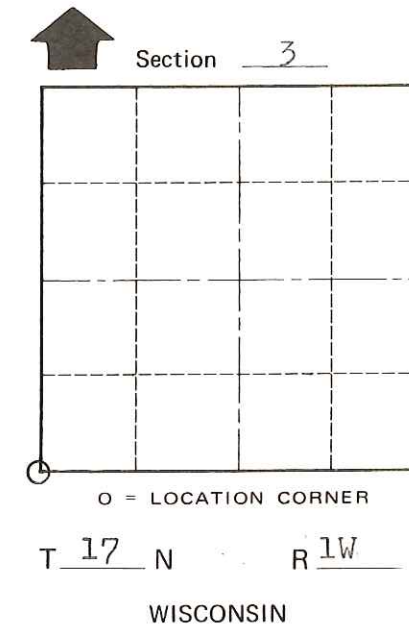
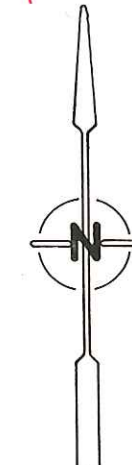
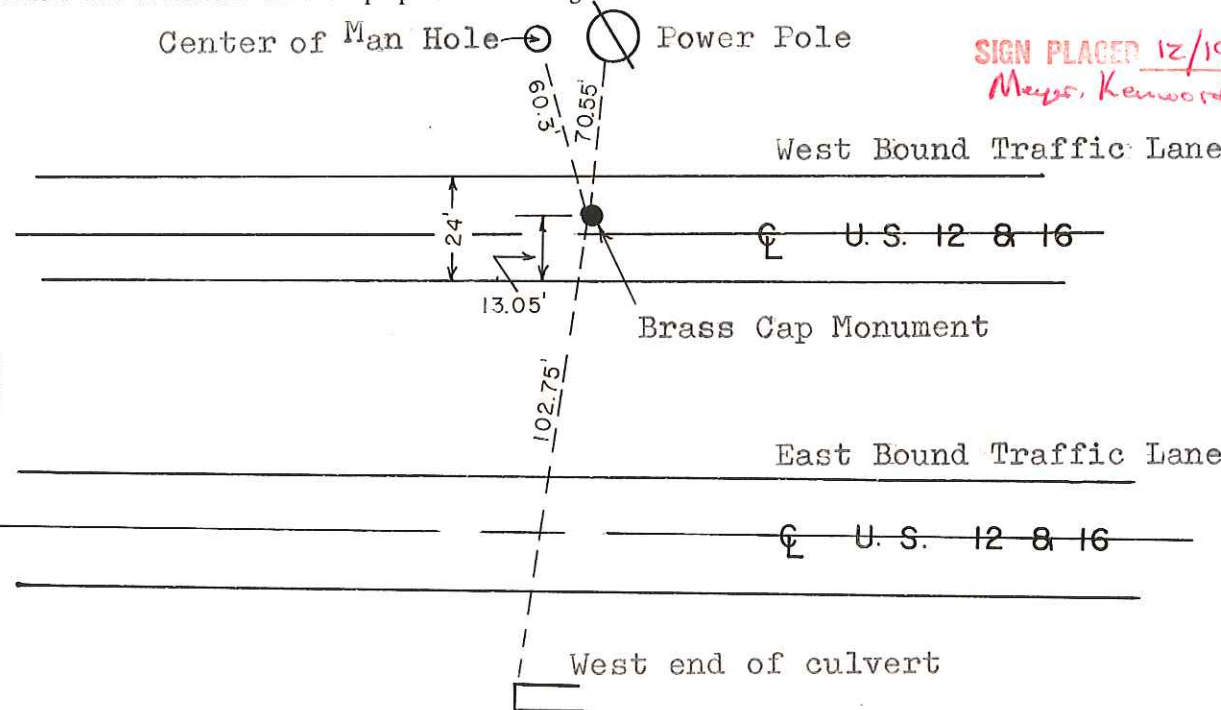
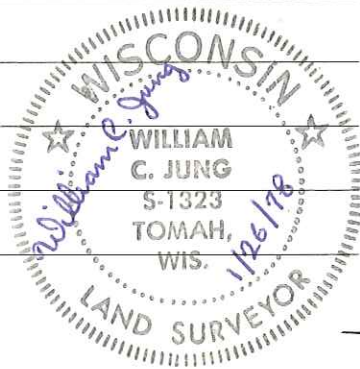
Brass cap in concrete.

Center of Man Hole Power Pole

SIGN PLACED 12/19/86 B. A. Meyer, Kenworthy

Witnesses to corner location:

Dechant  
Lueck



SURVEY CONTROL ORDER

Horizontal	_____
Vertical	_____

WISCONSIN COORDINATE SYSTEM

Corner	East (X)	North (Y)	Elevation (Z)	Zone
Control Sta. Name				

City, Village or Town Tomah

County of Monroe

COUNTY SURVEYOR FORM NO. 1