

18

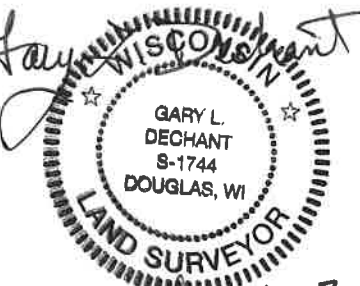
**U.S. PUBLIC LAND CORNER
MAINTENANCE**

Corner ID : E1/4 Sec.3, T17N-R1W

21701032000

<u>DATE</u>	<u>CREW</u>	<u>MONUMENT TYPE</u> -----
December 5, 2018	Zachariah P. Dechant Gary L. Dechant	Existing 2-1/2" iron pipe, set sign 1' north. In swamp. 13' east of down north-south fence.

<u>References:</u>	<u>Bearing</u>	<u>Distance</u>
1) Set 3/4"x24" round iron bar, down 3", on peninsula of higher ground with pines running N80E	N11E	72.60'
2) Set 3/4"x24" round iron bar, 3' NW of 10" White Pine	S16E	53.10'
3) Set 3/4"x24" round iron bar, 3' NE of 14" Maple	S20W	18.32'
4) Set 3/4"x24" round iron bar, 4' NE of 12" Maple	S56W	38.78'

Gary L. Dechant

December 6, 2018

CERTIFICATE

CERTIFIED LAND CORNER

No. 18

I, Harley A. Sime, do hereby certify that on the 27 day of June 1977, I found ~~(evidence)~~ (no evidence) of the E 1/4 corner of Section 3, T 17 N, R 1W, Fourth Principal Meridian, and I re-established said corner according to the Wisconsin Statutes as shown and described hereon.

History of original corner establishment:

O.R.Dahl, County Surveyor, was at this corner in October of 1868.

Description of corner evidence found:

Set the corner by intersecting the East line of Section 3 with the East-West 1/4 line of Section 3.

Dated this 28 day of June 19 77.

County Surveyor

**Approved: HARLEY A. SIME
MONROE CO. SURVEYOR**

**See Reverse Side
For Maintenance**

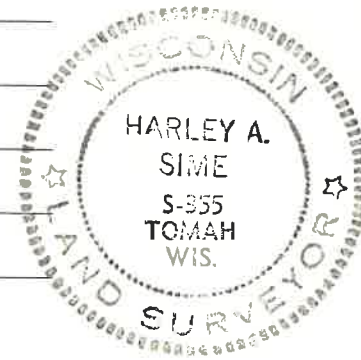
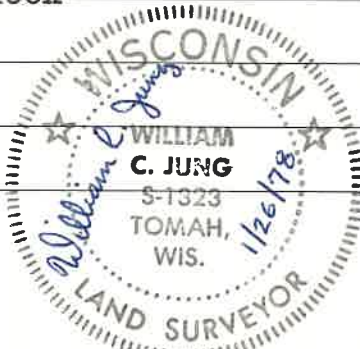
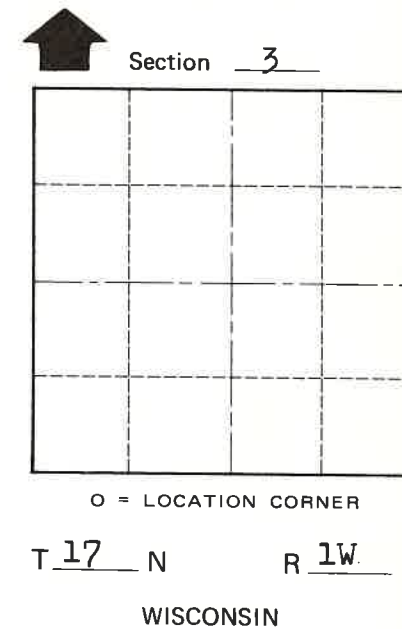
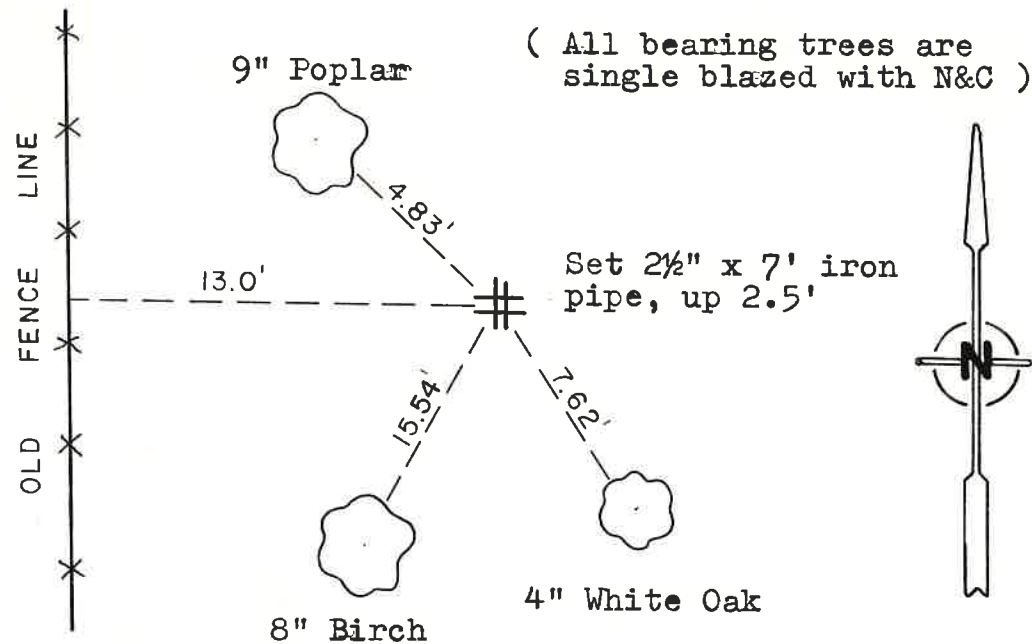
Description of corner and witness monuments, references and accessories used to perpetuate the original or re-established location of this corner:

Set an iron pipe in the woods.

Witnesses to corner location:

W. Jung - Crew Chief

A. Lueck



SURVEY CONTROL ORDER

Horizontal	_____
Vertical	_____

WISCONSIN COORDINATE SYSTEM

Corner	East (X)	North (Y)	Elevation (Z)	Zone
Control Sta. Name				

City, Village or Town Tomah

County of Monroe

COUNTY SURVEYOR FORM NO. 1