

# 19

**U.S. PUBLIC LAND CORNER  
MAINTENANCE**

**Corner ID : W1/4 Sec. 1, T17N-R1W**

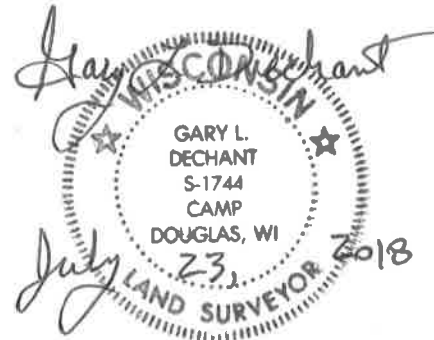
**21701022000**

<u>DATE</u>	<u>CREW</u>	<u>MONUMENT TYPE -----</u>
July 16, 2018	Zachariah P.Dechant Gary L. Dechant	Replaced broken Harrison with new Harrison. 4' west of center of Graphite Road. Corner is 719.5' north of south track of railroad. While digging in new Harrison, found stone approximately 1/2' farther north, down 3' ?

References:

	<u>Bearing</u>	<u>Distance</u>
1) Set 3/4"x24" round iron bar, down 10", 2' west of east cable gate post	N20E	41.46'
2) Set 3/4"x24" round iron bar, down 12" in field	East	32.32'
3) Set 3/4"x24" round iron bar, down 10"	West	14.15'
4) Set 3/4"x24" round iron bar, down 8", 5' south of middle of steel gate	N22W	39.78'

**Harrison and reference markers 2 and 3 set on straight line.**



I, Bryan H. Meyer, do hereby certify that on the 8<sup>th</sup> day of October 19 85, I found ~~evidence~~ (no evidence) of the West 1/4 corner of Section 1, T 17 N, R 1 W Fourth Principal Meridian, and I re-established said corner according to the Wisconsin Statutes as shown and described hereon.

Dated this 4<sup>th</sup> day of Feb. 19 86.

Bryan H. Meyer  
Deputy County Surveyor  
Title

History of corner establishment since Original Government Survey

Nothing recorded.

**See Reverse Side For Maintenance**

Description of corner evidence found:

I set this corner on line and at proportionate distance between the Northwest and Southwest corners of Section 1 as per the original notes. The overall distance along the West side of Section 1 matches the original notes within 2 1/2 feet!

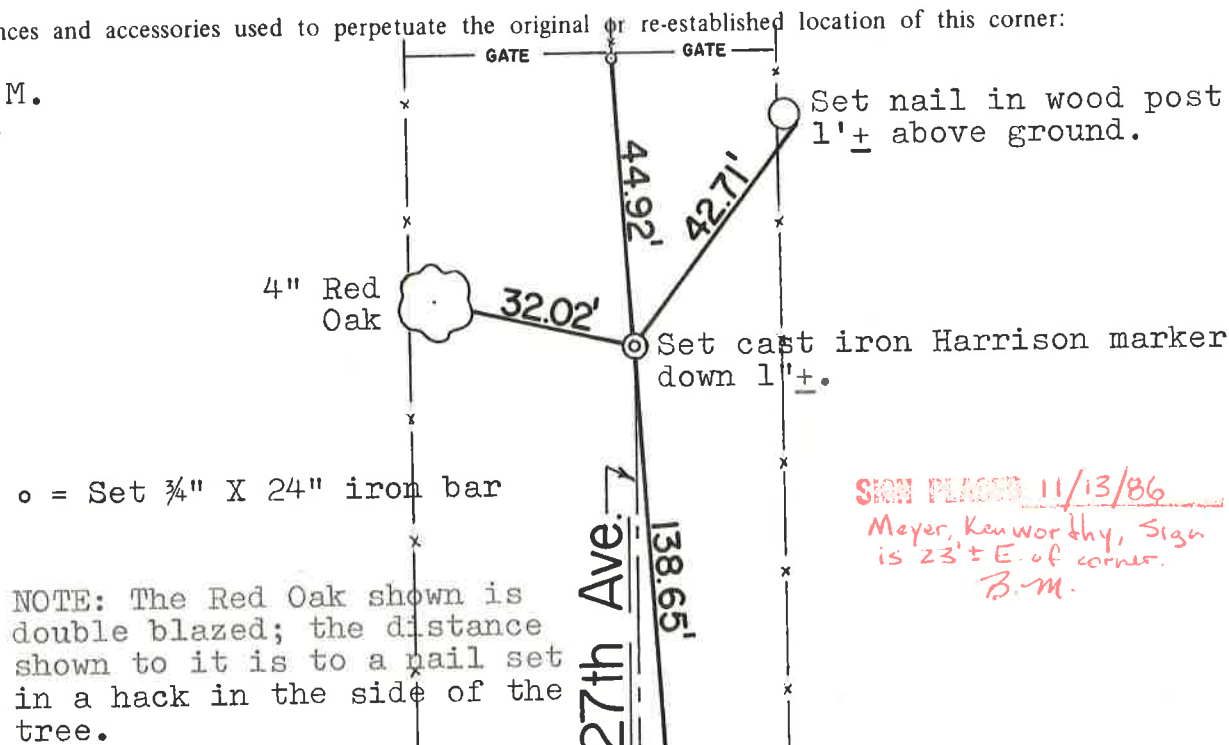


COUNTY SURVEYOR FORM NO. 1

Description of corner and witness monuments, references and accessories used to perpetuate the original or re-established location of this corner:

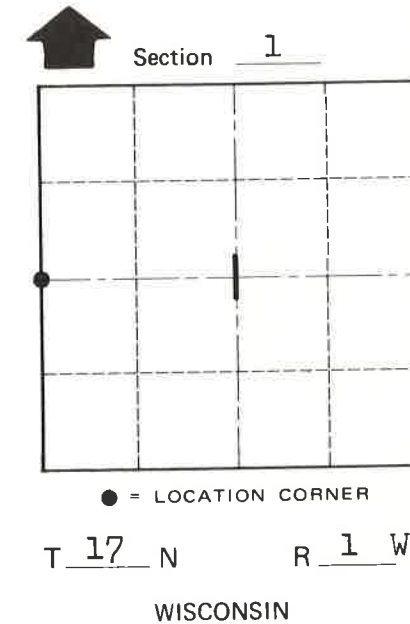
Crew: Meyer, Sime  
Date: October 8, 1985 - 9:00 A.M.  
Weather: Overcast, Windy, 50°±.  
Witnesses to corner location:

Bryan H. Meyer  
Gary Sime



NOTE: The Red Oak shown is double blazed; the distance shown to it is to a nail set in a hack in the side of the tree.

o = Set 3/4" X 24" iron bar



SURVEY CONTROL ORDER

Horizontal	_____
Vertical	_____

WISCONSIN COORDINATE SYSTEM				
Corner	East (X)	North (Y)	Elevation (Z)	Zone
Control Sta. Name				

City, Village or Town of Tomah  
County of Monroe