

# 39


**U.S. PUBLIC LAND CORNER  
MAINTENANCE**

**Corner ID : W1/4 Sec.12, T17N-R1W  
21701112000**

<u>DATE</u>	<u>CREW</u>	<u>MONUMENT TYPE -----</u>
November 30, 2018	Zachariah P. Dechant Gary L. Dechant	Existing Harrison intact, 20' east of ditch, 31' east of fence, 91' north of fence. Set sign 1' north

References:

	<u>Bearing</u>	<u>Distance</u>
1) Set 3/4"x24" round iron bar, down 3" in center of pit	N20E	6.91'
2) Set 3/4"x24" round iron bar, down 3", 5' NW of 6" White Pine	S64E	73.77'
3) Set 3/4"x24" round iron bar, down 3", 7' NW of 14" Maple (1979 BT)	S34E	82.17'
4) Set 3/4"x24" round iron bar, down 3", 4' east of 12" Black Cherry	N89W	70.90'

*Gary L. Dechant*  
  
*December 4, 2018*

CERTIFICATE

CERTIFIED LAND CORNER

No. 39

I, Harley A. Sime, do hereby certify that on the 5<sup>th</sup> day of July 19 79, I found (evidence) (no evidence) of the West 1/4 corner of Section 12, T 17 N, R 1 W Fourth Principal Meridian, and I re-established said corner according to the Wisconsin Statutes as shown and described hereon.

History of corner establishment since Original Government Survey  
No known history since the original government survey.

Description of corner evidence found:  
Set this corner equidistant and on line between the NW corner and SW corner of Section 12.

Dated this 30th day of Dec. 19 80.

Approved: **HARLEY A. SIME**  
**MONROE CO. SURVEYOR**  
Title

See Reverse Side  
For Maintenance

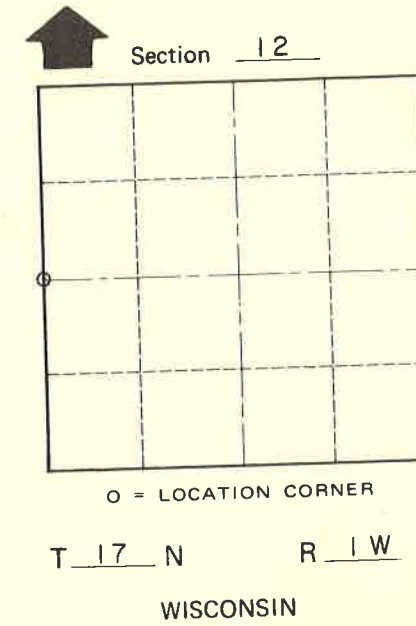
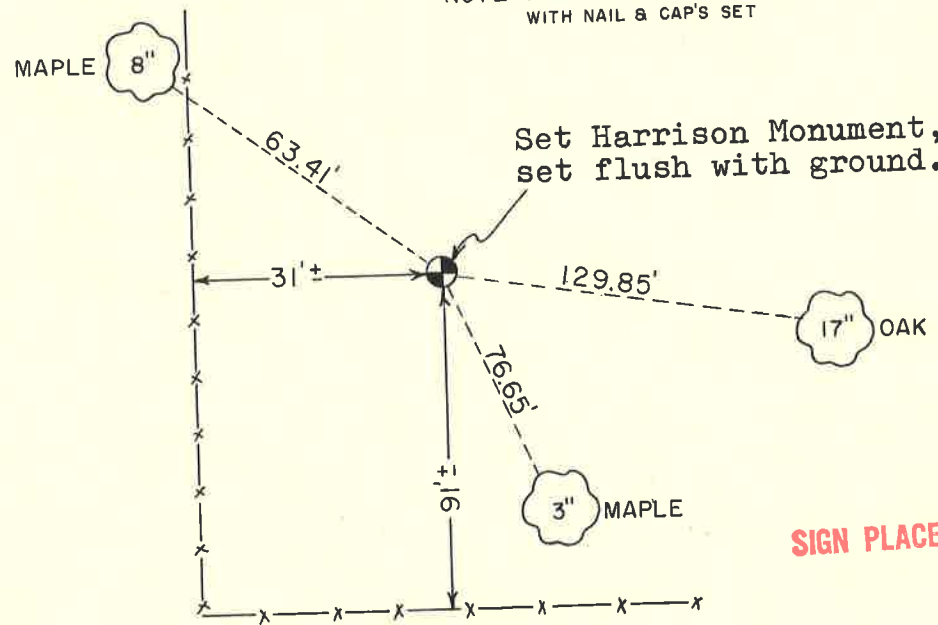
COUNTY SURVEYOR FORM NO. 1

Description of corner and witness monuments, references and accessories used to perpetuate the original or re-established location of this corner:

Witnesses to corner location:

Dechant  
Webb

NOTE: ALL TREES DOUBLE BLAZED WITH NAIL & CAP'S SET



SIGN PLACED 7-24-93

SURVEY CONTROL ORDER

Horizontal \_\_\_\_\_  
Vertical \_\_\_\_\_

WISCONSIN COORDINATE SYSTEM

Corner	East (X)	North (Y)	Elevation (Z)	Zone
Control Sta. Name				

or Town Tomah  
County of Monroe