

# 43

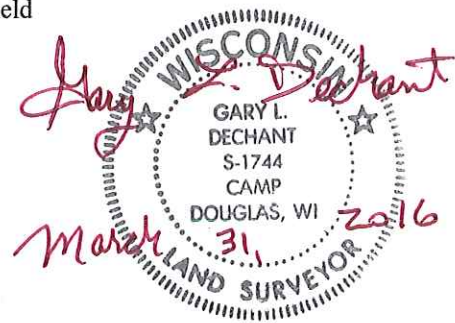
**U.S. PUBLIC LAND CORNER  
MAINTENANCE**

**Corner ID : SE Sec. 11, T17N-R1W  
21701110000**

<u>DATE</u>	<u>CREW</u>	<u>MONUMENT TYPE</u> -----
October 29, 2015	Zachariah P.Dechant Gary L. Dechant	Harrison intact, sign 1/2' north, in N-S fence

References:

	<u>Bearing</u>	<u>Distance</u>
1) Set 3/4"x24", iron bar ,down 6", 6' SW of 14" Double Black Oak	N58E	28.02'
2) Set 3/4"x24" iron bar, down 6", 7' NW of 4" Maple	S54E	22.14'
3) Set 3/4"x24" iron bar, down 12" edge of field	S74W	18.24'
4) Set 3/4"x24" iron bar, down 12" edge of field, just east of 5" White Pine growing in field	N53W	18.80'



I, Harley A. Sime, do hereby certify that on the 5<sup>th</sup> day of July 19 79, I found (evidence) (no evidence) of the Southwest corner of Section 12, T 17 N, R 1 W Fourth Principal Meridian, and I re-established said corner according to the Wisconsin Statutes as shown and described hereon.

History of corner establishment since Original Government Survey

No known history since the original government survey.

Description of corner evidence found:

G. Sime set a hexagon iron bar in a previous survey. Replaced the hexagon iron bar with a Harrison Monument.

Dated this \_\_\_\_\_ day of \_\_\_\_\_ 19\_\_\_\_.

**Approved: HARLEY A. SIME**  
**MONROE CO. SURVEYOR**  
Title

**See Reverse Side  
For Maintenance**

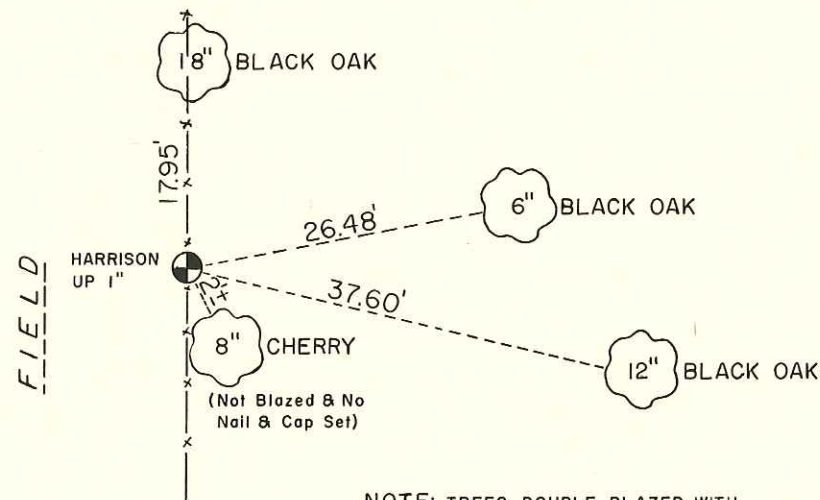
COUNTY SURVEYOR FORM NO. 1

Description of corner and witness monuments, references and accessories used to perpetuate the original or re-established location of this corner:

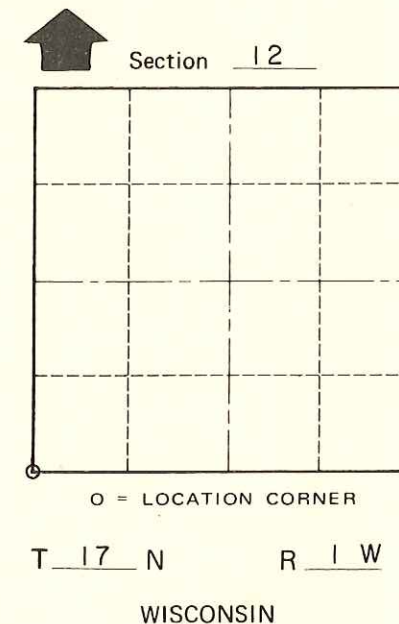
Replaced Existing Hexagon iron bar with Harrison Monument

Witnesses to corner location:

Dechant  
Webb



NOTE: TREES DOUBLE BLAZED WITH NAIL & CAPS SET



SURVEY CONTROL ORDER

Horizontal	_____
Vertical	_____

WISCONSIN COORDINATE SYSTEM

Corner	East (X)	North (Y)	Elevation (Z)	Zone
Control Sta. Name				

\_\_\_\_\_ or Town Tomah  
County of Monroe