

37

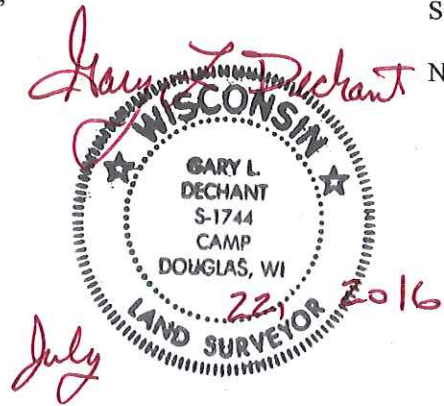
**U.S. PUBLIC LAND CORNER
MAINTENANCE**

**Corner ID : E1/4 Sec. 9, T17N-R1W
21701092000**

<u>DATE</u>	<u>CREW</u>	<u>MONUMENT TYPE</u> -----
July 13, 2016	Zachariah P. Dechant Gary L. Dechant	Found Harrison top broke off, down 8" 8' west of most easterly power line, ditch to SE (3 power lines running north-south) Steel post 1/2 ' north, Set survey sign 1' west.

References:

	<u>Bearing</u>	<u>Distance</u>
1) Set 3/4"x24" round iron bar, down 6" in mowed area	N51E	42.65
2) Set 3/4"x24" round iron bar, down 6", 7' north of 30" Red Oak, east of ditch	S64E	35.77'
3) Set 3/4"x24" round iron bar, down 6"	S14W	19.42'
4) Set 3/4"x24" round iron bar, down 6"	N67W	33.05'



I, Harley A. Sime, do hereby certify that on the 20th day of March 1978, I found (evidence) (~~no evidence~~) of the W 1/4 corner of Section 10, T 17 N, R 1 W Fourth Principal Meridian, and I re-established said corner according to the Wisconsin Statutes as shown and described hereon.

History of original corner establishment:

No known recorded history since the original government survey.

Description of corner evidence found:

D. Marten set a Harrison Monument in place of an existing 3/4" iron pipe on December 24, 1971. He set Harrison flush with ground.

Dated this 21st day of March 1978.

Harley Sime

County Surveyor

Title

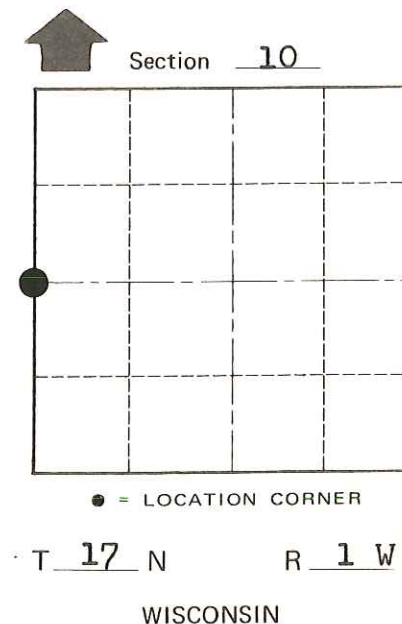
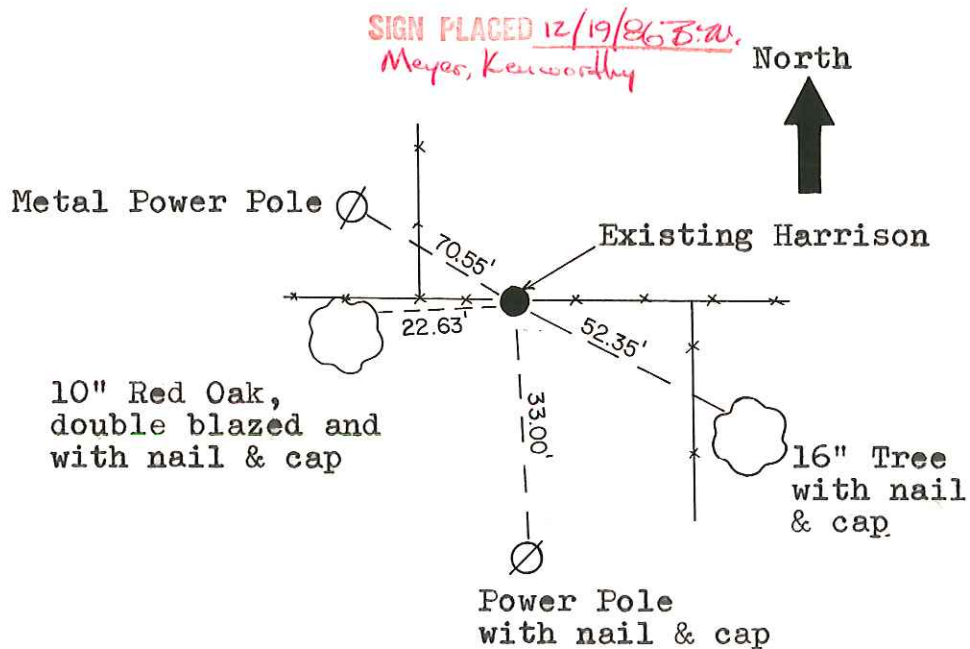
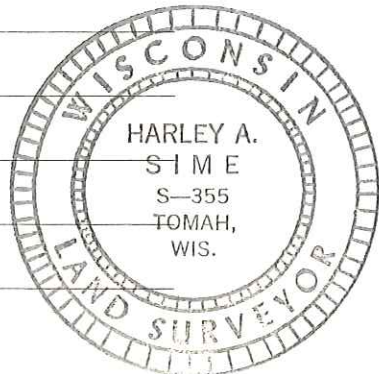
Approved: **HARLEY A. SIME**
MONROE CO. SURVEYOR

See Reverse Side
For Maintenance

Description of corner and witness monuments, references and accessories used to perpetuate the original or re-established location of this corner:

Witnesses to corner location:

G. Dechant



SURVEY CONTROL ORDER

Horizontal	_____
Vertical	_____

WISCONSIN COORDINATE SYSTEM

Corner	East (X)	North (Y)	Elevation (Z)	Zone
Control Sta. Name				

City, Village or Town Tomah

County of Monroe

COUNTY SURVEYOR FORM NO. 1