

#48

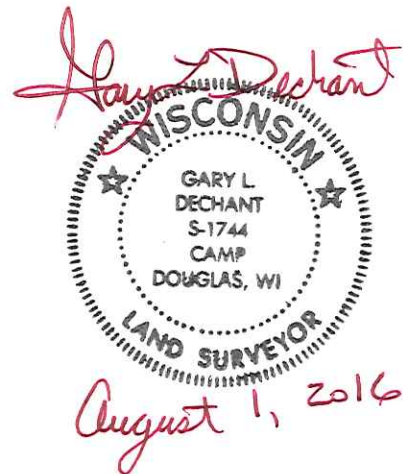
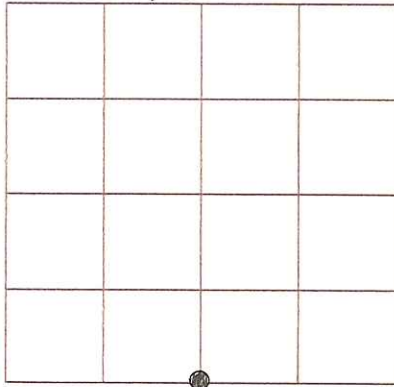
U.S. Public Land Survey Monument Record

Corner ID: S1/4 Sec. 9, T17N-R1W

21701090020

Type of Monument: Reset corner with mag nail

Sec. 9, T17N-R1W



County Coordinates:

CERTIFICATE:

I, Gary L. Dechant, S-1744, do hereby certify that the corner location was determined under my direction and control as per Chapter AE7 of the Wisconsin Administrative Code to the best of my knowledge and belief.

Field Crew & Date: July 27, 2016

Zachariah P. Dechant
Gary L. Dechant

Gary L. Dechant August 1, 2016

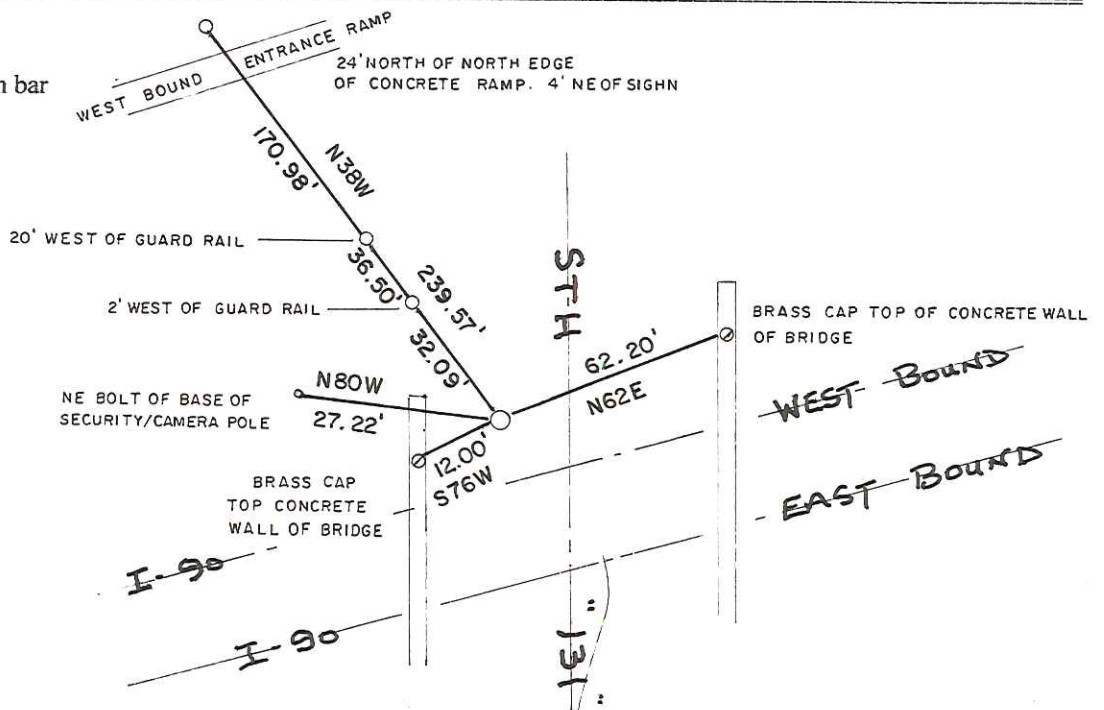
Basis For Monument Location:

(Show info such as history, evidence, testimony, found or method of relocation)

Original Gov't Surveyor was William F. Thompkins in 1852.

In 1976 Bill Jung found a concrete nail which had been used in several previous surveys. The mag nail was replaced with a 1 1/4" iron bar by a City of Tomah crew. This corner, along with its ties, has been destroyed more than once by highway projects. After finding no existing ties of Jung's or the DOT's Kadina, I reset the corner based on recorded information from previous surveys.

○ = Set 3/4"x24" round iron bar



#48

I, William C. Jung 7th, do hereby certify that on the _____ day of December 19 83, I found (evidence) ~~(no evidence)~~ of the North 1/4 corner of Section 16, T 17 N, R 1 W Fourth Principal Meridian, and I re-established said corner according to the Wisconsin Statutes as shown and described hereon.

Dated this 10th day of Dec. 19 83.

William C. Jung

Deputy County Surveyor, R.L.S. 1323
Title

History of corner establishment since Original Government Survey

There was nothing on record in the old County Surveyor Books. On October 22 of 1976 I found a concrete nail at the corner. This point had been used as the corner in several surveys done in recent years. I took ties and recorded a tie sheet in the County Surveyor files. After this a crew from the City of Tomah street department replaced the nail with an iron bar.

In September of 1983 the iron bar was destroyed during a highway resurfacing project. Derald Kading from the Department of Transportation took more ties to the corner before it was destroyed. I reset the corner, placing a 1 1/4"x30" round iron bar at the corner. It is on line with the end of the concrete wall just West of the corner and is 5.2 ' West of the West edge of the road.

Approved: **HARLEY A. SIME**
MONROE CO. SURVEYOR

Description of corner and witness monuments, references and accessories used to perpetuate the original or re-established location of this corner:

Witnesses to corner location:

William C. Jung

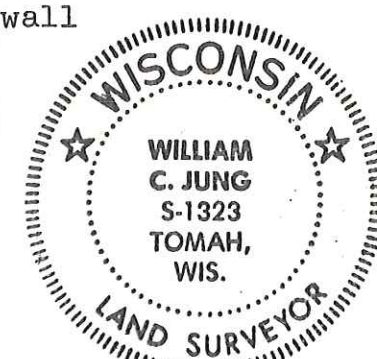
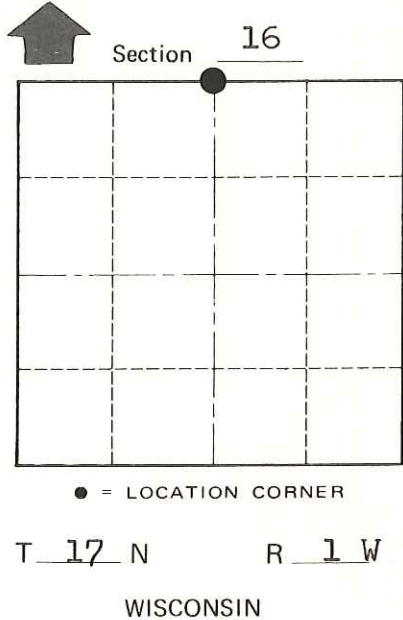
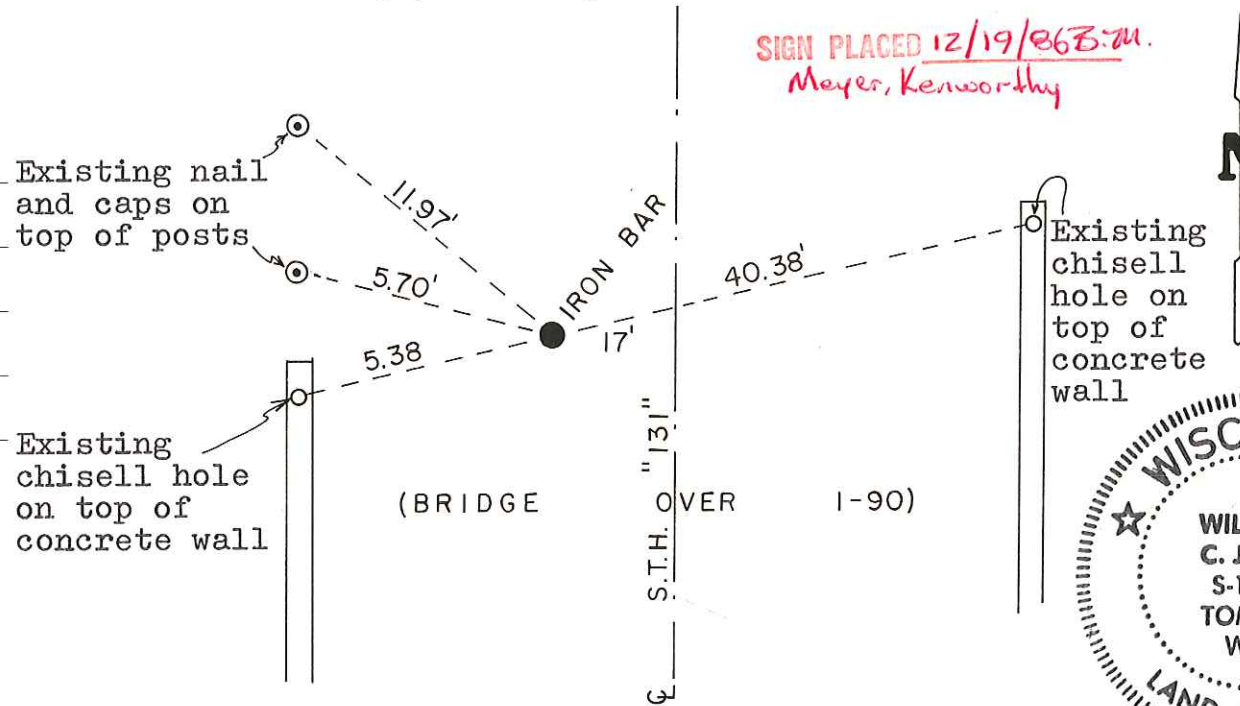
Dennis Perrigo

1976 crew:

William C. Jung

Bruce Rassmussen

August Lueck



COUNTY SURVEYOR FORM NO. 1

SURVEY CONTROL ORDER

Horizontal	_____
Vertical	_____

WISCONSIN COORDINATE SYSTEM

Corner	East (X)	North (Y)	Elevation (Z)	Zone
Control Sta. Name				

City, Village or Town Tomah
County of Monroe
Wisconsin