

U.S. LAND CORNER MAINTENANCE


Corner ID : E1/4 Sec. 8, T17N-R1W
21701082000

| DATE | CREW | MONUMENT TYPE ----- |
|--------------------|---|---|
| September 26, 2013 | Zachariah P. Dechant Gary L. Dechant | Existing 1 1/4" 4' west of centerline STH "16" 9' south of centerline of driveway Fire No. 23980 |

References:

| | <u>Bearing</u> | <u>Distance</u> |
|--|----------------|-----------------|
| 1) Set 3/4"x24" hexagon iron bar 77' east of centerline "16." Also, 68' west & 3.5' north of NW corner of garage attached to house, | N42E | 144.06' |
| 2) Set 1"x24" iron pipe, 5' north of 24" White Pine | S65E | 116.91' |
| 3) Set 1"x24" iron pipe 26' west of centerline STH "16" | S55W | 35.89' |
| 4) Set 3/4"x24" hexagon iron bar, down 4", 7' north of concrete driveway | N65W | 59.58' |
| 5) Set 1"x24" iron pipe, 25' west of centerline STH "16" | N17W | 40.48' |

Harrison and reference markers 2 and 4 are on a straight line.

Gary L. Dechant

September 26, 2013

21701082000

I, Harley A. Sime, do hereby
certify that on the 9th day
of March 1981 found
(evidence) () of the W/4
corner of Section 9, T 17 N,
R 1 W Fourth Principal Meridian, and I re-
established said corner according to the Wisconsin
Statutes as shown and described hereon.

Dated this 9th day of March 1981

Harley A. Sime, R.L.S. 355
County Surveyor
Title

History of corner establishment since Original Government Survey

In 1980 a P.K. nail was found by G. Sime at this corner, which has been used in many surveys years before. G. Sime replaced the P.K. nail with a 1 1/4" round iron bar.

Description of corner evidence found:

Found G. Sime's round iron bar and tack ties.

UPDATE: The County Surveyor's Office was notified that a resurfacing project was to take place in the summer of 1993. In May of 1993, Meyer and Lobe checked the previous ties and set two new ties. In August of 1993, Meyer and Lobe set a new 1 1/4" x 30" round iron bar at the corner.

COUNTY SURVEYOR FORM NO. 1

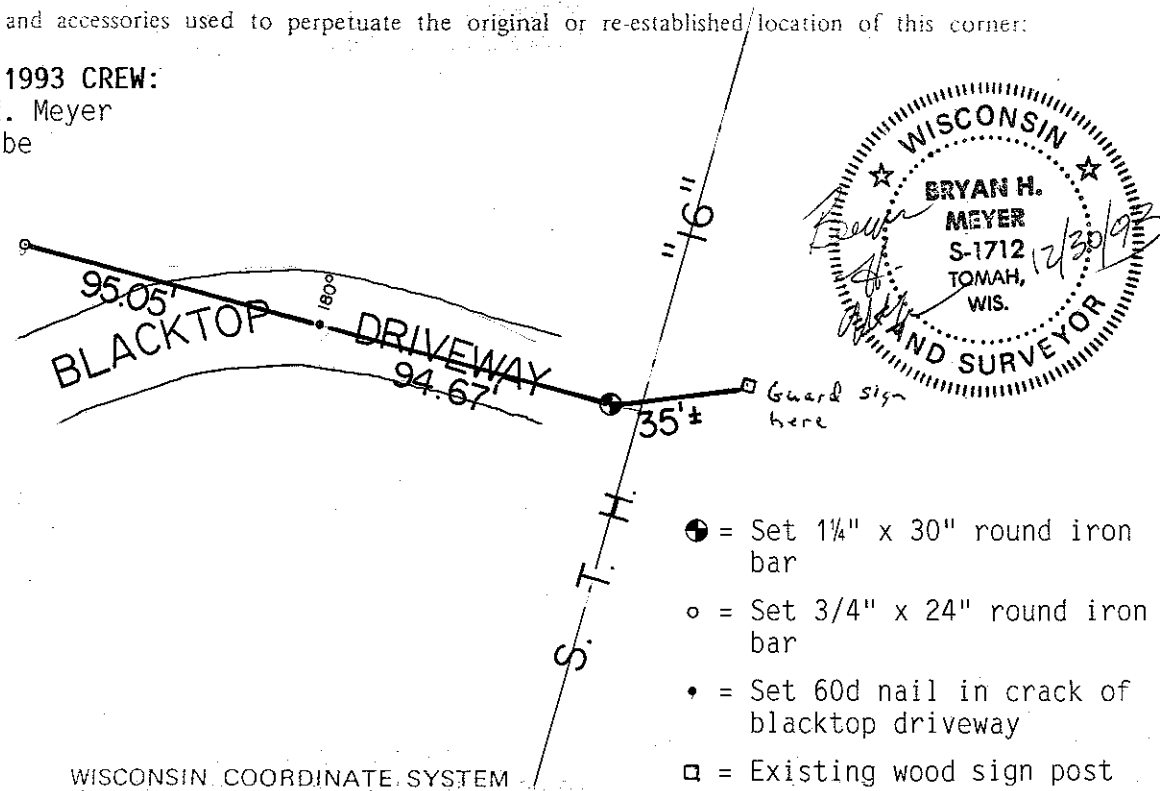
Description of corner and witness monuments, references and accessories used to perpetuate the original or re-established location of this corner:

AUGUST 1993 CREW:
Bryan H. Meyer
Rick Lobe

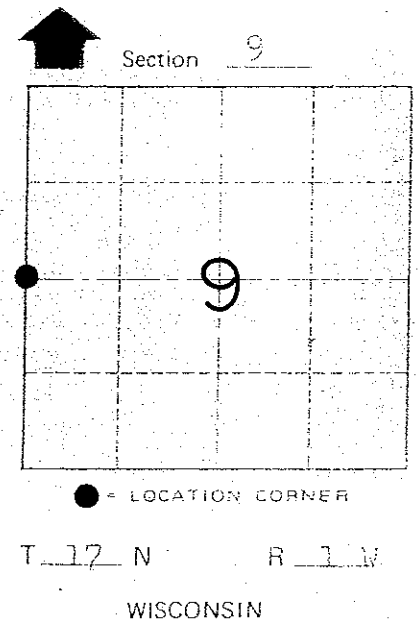
Witnesses to corner location:

G. Dechant

B. Meyer



- = Set 1 1/4" x 30" round iron bar
- = Set 3/4" x 24" round iron bar
- = Set 60d nail in crack of blacktop driveway
- = Existing wood sign post



Approved: **HARLEY A. SIMZ**
MONROE CO. SURVEYOR

SURVEY CONTROL ORDER

| | |
|------------|-------|
| Horizontal | _____ |
| Vertical | _____ |

WISCONSIN COORDINATE SYSTEM

| Corner | East (X) | North (Y) | Elevation (Z) | Zone |
|-------------------|----------|-----------|---------------|------|
| Control Sta. Name | | | | |

City, ~~Tomah~~ or Town Tomah
County of Monroe

CERTIFICATE

I, Harley A. Sime, do hereby certify that on the 9th day of March 1981, I found (evidence) (~~no evidence~~) of the W/4 corner of Section 9, T 17 N, R 1 W Fourth Principal Meridian, and I re-established said corner according to the Wisconsin Statutes as shown and described hereon.

Dated this 9th day of March 1981.

Harley A. Sime, R.L.S. 355

County Surveyor
Title

CERTIFIED LAND CORNER

No. 36
See Pg. 2

History of corner establishment since Original Government Survey

In 1980 a P.K. nail was found by G. Sime at this corner, which has been used in many surveys years before. G. Sime replaced the P.K. nail with a 1 1/4" round iron bar.

Description of corner evidence found:

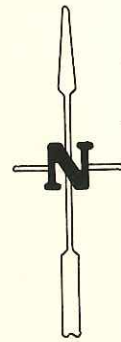
Found G. Sime's round iron bar and took ties.

COUNTY SURVEYOR FORM NO. 1

Description of corner and witness monuments, references and accessories used to perpetuate the original or re-established location of this corner:

Witnesses to corner location:

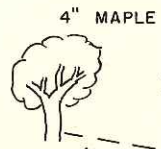
G. Dechant
B. Meyer



18" RED PINE



105.95'
S85W



4" MAPLE

N80W

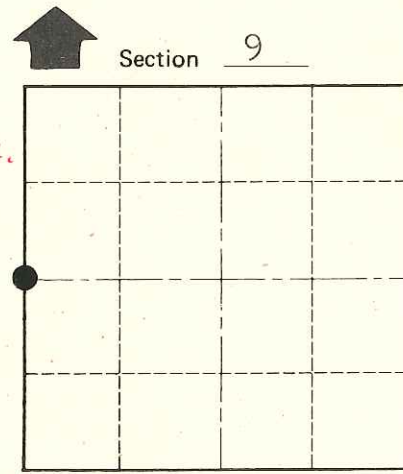
67.40'

Existing 1 1/4" iron bar

1/6"
S.T.H.

SIGN PLACED 12/19/86 B.W. Meyer, Kenworthy

STREET SIGN WITH NAIL
T O M A H
POPULATION 5647



● = LOCATION CORNER

T 17 N R 1 W
WISCONSIN

(Trees not blazed and no n&c's set)

Approved: **HARLEY A. SIMZ**
MONROE CO. SURVEYOR

SURVEY CONTROL ORDER

Horizontal _____
Vertical _____

WISCONSIN COORDINATE SYSTEM

| Corner | East (X) | North (Y) | Elevation (Z) | Zone |
|-------------------|----------|-----------|---------------|------|
| Control Sta. Name | | | | |

City, ~~Monroe~~ or Town Tomah
County of Monroe