

# 50

**U.S. PUBLIC LAND CORNER  
MAINTENANCE**

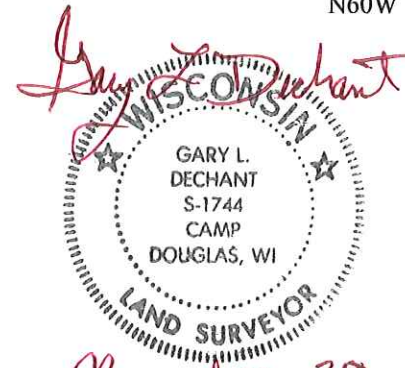
**Corner ID : S1/4 Sec. 8 T17N-R1W**

**21701080020**

<u>DATE</u>	<u>CREW</u>	<u>MONUMENT TYPE -----</u>
November 2, 2016	Zachariah P.Dechant Gary L. Dechant	Existing Harrison, intact in north-south fence Set new sign 1' north

References:

	<u>Bearing</u>	<u>Distance</u>
1) Set 3/4"x24" round iron bar, down 12" in field	N48E	14.94'
2) Set 3/4"x24 round iron bar, down 12" in field	S40E	18.82'
3) Set 3/4"x24" round iron bar, down 10"	S22W	25.10'
4) Set 3/4"x24" round iron bar, down 10" in field	N60W	25.05'



*November 29, 2016*

See Reverse Side For Maintenance

I, Bryan H. Meyer, do hereby certify that on the 24<sup>th</sup> day of August, 1987, I found (evidence) ~~no evidence~~ of the South 1/4 corner of Section 8, T 17 N, R 1 W Fourth Principal Meridian, and I re-established said corner according to the Wisconsin Statutes as shown and described hereon.

History of corner establishment since Original Government Survey

Webster Kenyon was here in September of 1887

Description of corner evidence found:

I set this corner on line between the Southwest and Southeast corners of Section 8 and in a North-South fence.



Dated this 24<sup>th</sup> day of Aug., 1987.

Bryan H. Meyer

Registered Land Surveyor

Title

COUNTY SURVEYOR FORM NO. 1

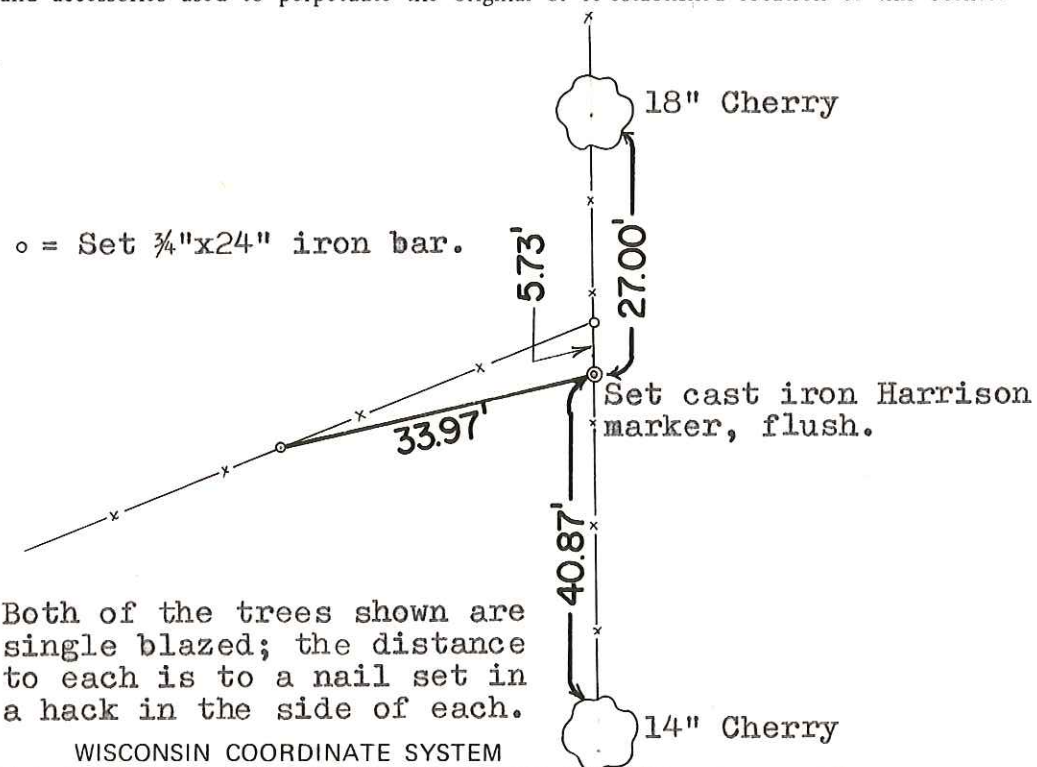
Description of corner and witness monuments, references and accessories used to perpetuate the original or re-established location of this corner:

Crew: Meyer, Wilhite  
Date: August 24, 1987 - 10:30 A.M.  
Weather: P. Cloudy, Windy, 70°±.

Witnesses to corner location:

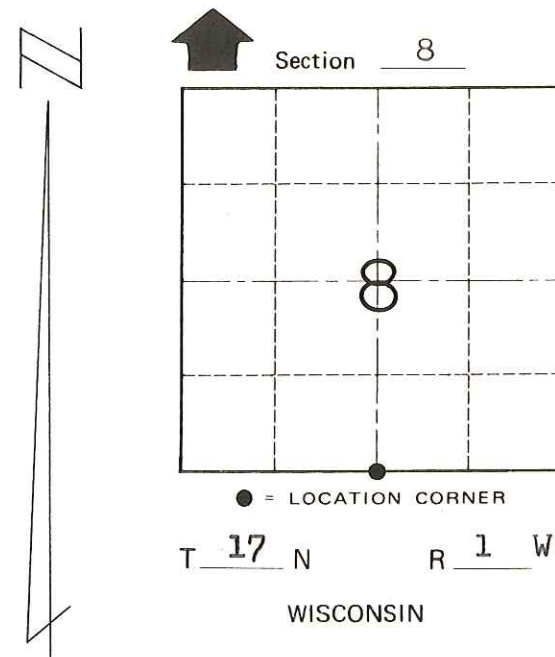
Bryan H. Meyer

Dallas Wilhite



Both of the trees shown are single blazed; the distance to each is to a nail set in a hack in the side of each.

WISCONSIN COORDINATE SYSTEM



SURVEY CONTROL ORDER

Horizontal	_____
Vertical	_____

Corner	East (X)	North (Y)	Elevation (Z)	Zone
Control Sta. Name				

~~City Village or~~ Town of Tomah

County of Monroe