

# U.S. LAND CORNER MAINTENANCE

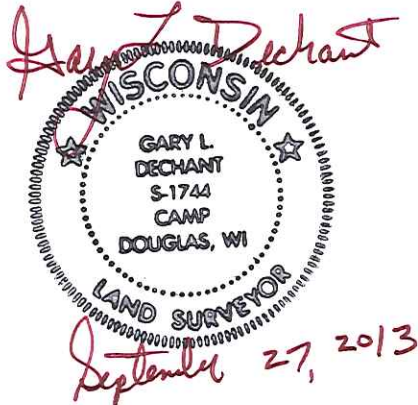
Corner ID : SE Sec. 8, T17N-R1W  
21701080000

| <u>DATE</u>        | <u>CREW</u>                             | <u>MONUMENT TYPE</u> -----                             |
|--------------------|---|--|
| September 26, 2013 | Zachariah P. Dechant<br>Gary L. Dechant | Existing Harrison in centerline of road, top broke off |

References:

|   | <u>Bearing</u> | <u>Distance</u> |
|---|----------------|-----------------|
| 1) Set 3/4"x24" hexagon iron bar, 8' west & 17' south of SE corner of house         | N44E           | 48.56'          |
| 2) Set 3/4"x24" hexagon iron bar, down 14" in field                                 | S18E           | 47.36'          |
| 3) Set 3/4"x24" hexagon iron bar, 5' north of 20" Red Oak                           | S44W           | 44.77'          |
| 4) Set 3/4"x24" hexagon iron bar, 22' west of SW corner of house 7' SE of 12' Maple | N18W           | 62.87'          |

Harrison and reference markers are on straight lines.



CERTIFICATE

CERTIFIED LAND CORNER

No. 49

21701080000

I, William C. Jung, do hereby certify that on the 11th day of July 1978, I found (evidence) (no evidence) of the NW corner of Section 16, T17 N, R 1 W, Fourth Principal Meridian, and I re-established said corner according to the Wisconsin Statutes as shown and described hereon.

Dated this 12th day of Dec. 1978.

William C. Jung, R.L.S. 1323

County Surveyor's Office

History of original corner establishment:

This corner is shown as a tie on the Braund Subdivision and as a tie on the Assessor's Plat in Section 17.

Description of corner evidence found:

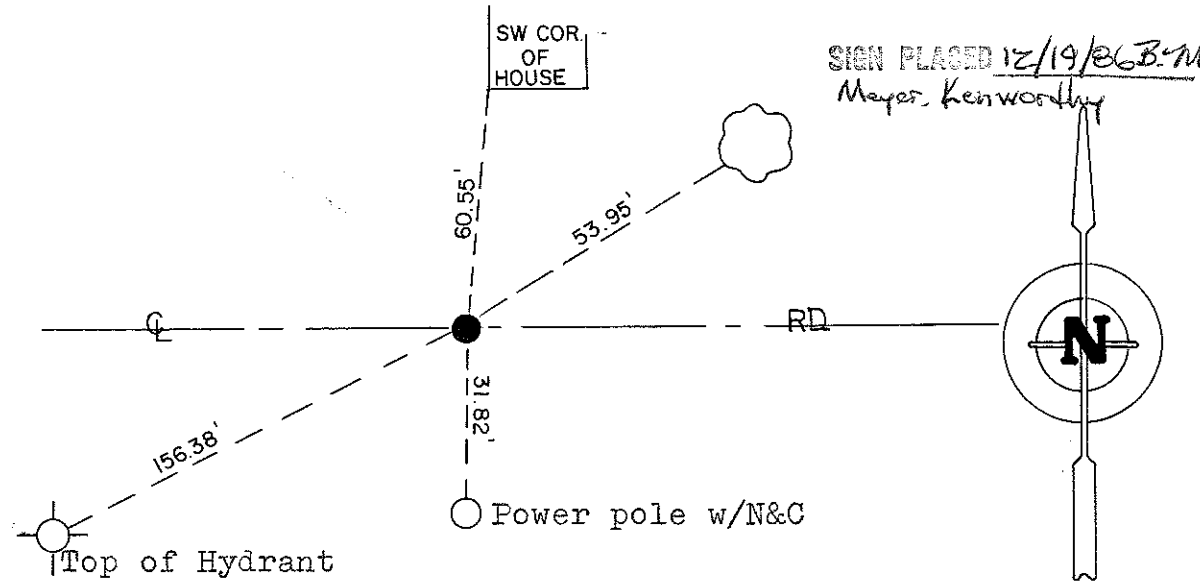
Found a P.K. nail in the road centerline and replaced it with a Harrison. This point had been used in previous surveys. Also found a 1" bar, a 1" pipe, and a 2" pipe while digging.

Description of corner and witness monuments, references and accessories used to perpetuate the original or re-established location of this corner:

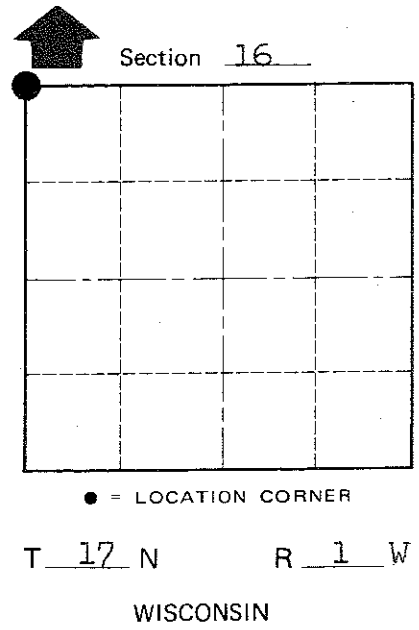
Witnesses to corner location:

D. Dade

B. Meyer



SIGN PLACED 12/19/86 B.M. Mayer, Kenworthy



COUNTY SURVEYOR FORM NO. 1

SURVEY CONTROL ORDER

|            |       |
|------------|-------|
| Horizontal | _____ |
| Vertical   | _____ |

Approved by: Harley A. Sime  
County Surveyor

WISCONSIN COORDINATE SYSTEM

| Corner            | East (X) | North (Y) | Elevation (Z) | Zone |
|-------------------|----------|-----------|---------------|------|
| Control Sta. Name |          |           |               |      |

City, Village or Town Tomah

County of Monroe