

U.S. PUBLIC LAND SURVEY MONUMENT RECORD

INSTRUCTIONS: THIS RECORD SHALL SHOW THE LOCATION OF THE CORNER AND SHALL INCLUDE ALL OF THE FOLLOWING NINE ELEMENTS (A THROUGH I)

(A) IDENTIFY THE CORNER BY REFERENCE TO THE U.S. PUBLIC LAND SURVEY SYSTEM

■ = CORNER MONUMENT FOUND

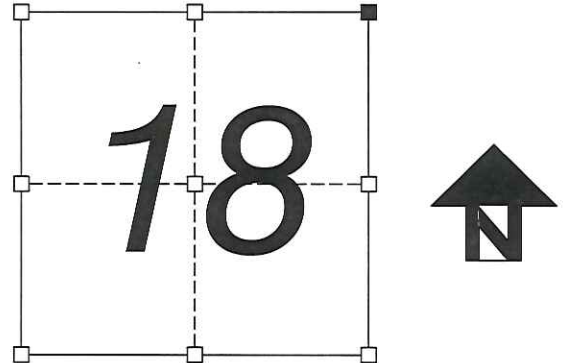
WITNESSES TO CORNER LOCATION:

NOAH E. ANLIKER

MONROE COUNTY COORDINATES, NAD83(2011)

NORTHING: 384449.985

EASTING: 699128.726



SECTION 18, T.17N., R.1W.

(B) DESCRIBE ANY RECORD EVIDENCE, MONUMENT EVIDENCE, OCCUPATIONAL EVIDENCE, TESTIMONIAL EVIDENCE, OR ANY OTHER MATERIAL EVIDENCE YOU CONSIDERED, AND WHETHER THE MONUMENT WAS FOUND OR PLACED.

A 1 3/8" DIAMETER IRON ROD WAS FOUND AT THIS CORNER AS SHOWN ON A U.S. PUBLIC LAND SURVEY MONUMENT RECORD DATED FEBRUARY 24, 1983 BY WILLIAM C. JUNG. THREE WITNESS MONUMENTS OF RECORD WERE RECOVERED. ONE WITNESS MONUMENT WAS SET AND REFERENCED AS ILLUSTRATED BELOW.

(C) IN THE PLAN VIEW DRAWING BELOW, PROVIDE REFERENCE TIES TO AT LEAST 4 WITNESS MONUMENTS, OR, IF THE LOCATION IS WITHIN A MUNICIPALITY, TO AT LEAST 2 WITNESS MONUMENTS, (WITNESS MONUMENTS SHALL BE MADE OF CONCRETE, NATURAL STONE, IRON OR OTHER EQUALLY DURABLE MATERIAL). DESCRIBE WITNESS MONUMENTS.

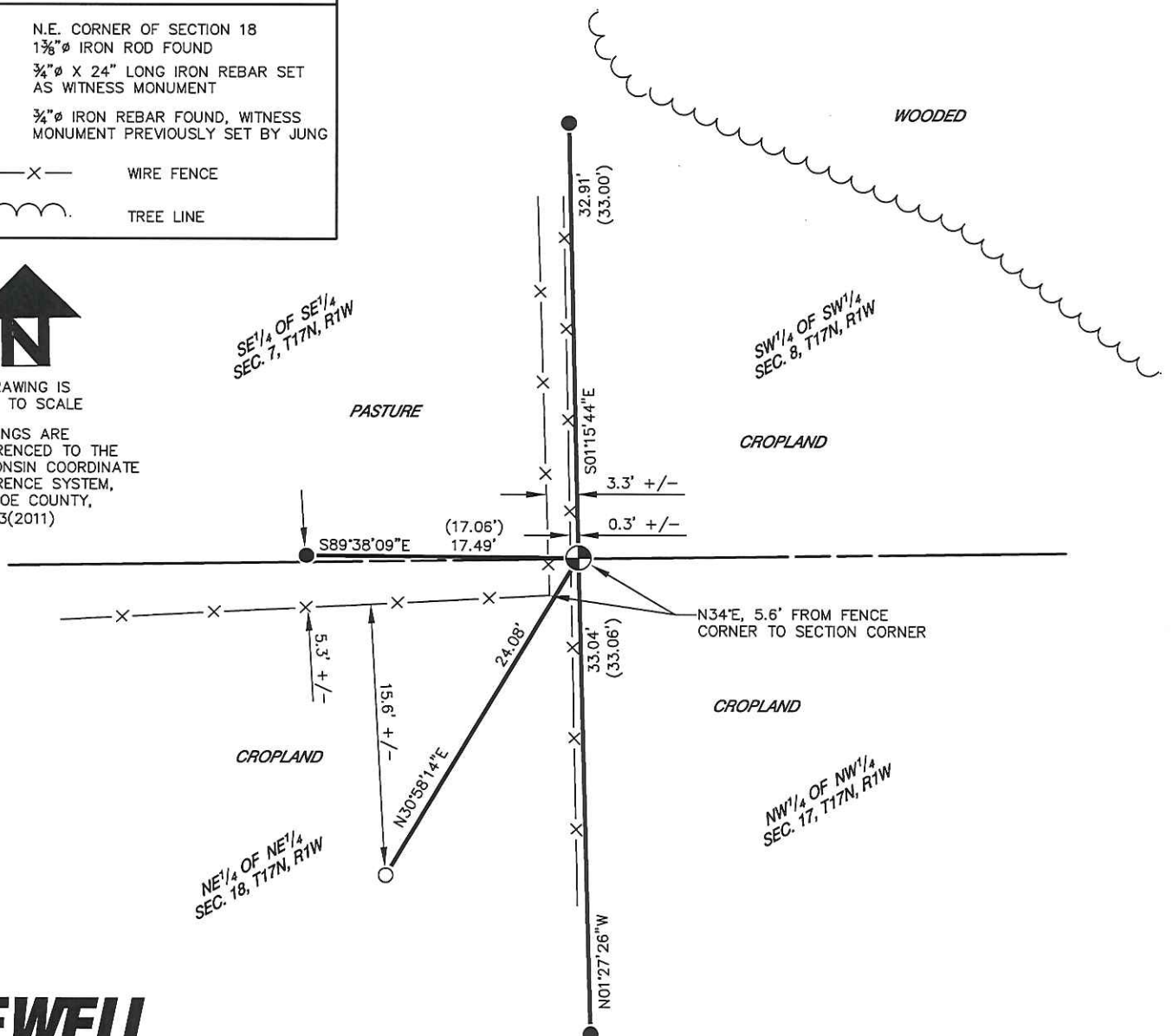
(D) SHOW A PLAN VIEW DRAWING DEPICTING THE RELEVANT MONUMENTS AND REFERENCE TIES WHICH IS SUFFICIENT IN DETAIL TO ENABLE ACCURATE RELOCATION OF THE CORNER MONUMENT IF IT IS DISTURBED.

LEGEND	
	N.E. CORNER OF SECTION 18 1 3/8" Ø IRON ROD FOUND
	3/4" Ø X 24" LONG IRON REBAR SET AS WITNESS MONUMENT
	3/4" Ø IRON REBAR FOUND, WITNESS MONUMENT PREVIOUSLY SET BY JUNG
	WIRE FENCE
	TREE LINE



DRAWING IS NOT TO SCALE

BEARINGS ARE REFERENCED TO THE WISCONSIN COORDINATE REFERENCE SYSTEM, MONROE COUNTY, NAD83(2011)



151

(E) DESCRIBE ANY MATERIAL DISCREPANCY BETWEEN THE LOCATION OF THE CORNER AS RESTORED OR REESTABLISHED AND THE LOCATION OF THAT CORNER AS PREVIOUSLY RESTORED OR REESTABLISHED BY DISTANCE AND DIRECTION. SHOW THE DISCREPANCY ON THE PLAN VIEW DRAWING UNDER (D), ABOVE. SHOW THE DISTANCES BETWEEN THE CORNER AS PREVIOUSLY RESTORED OR REESTABLISHED AND (1) THE CORNER AS RESTORED OR REESTABLISHED, AND (2) TO AT LEAST 2 OF THE WITNESS MONUMENTS SHOWN ON THE DRAWING IN (D) ABOVE.

NO DISCREPANCY FOUND

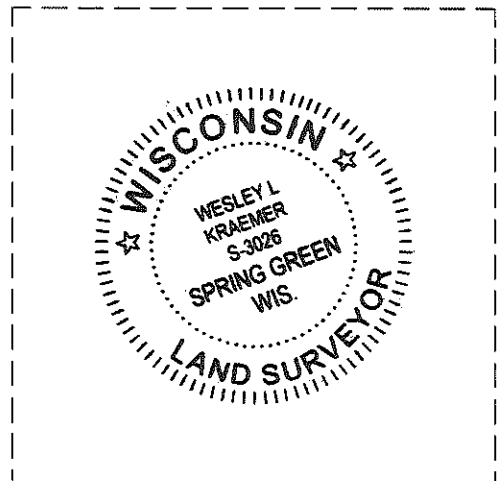
(F) WAS THE CORNER RESTORED THROUGH ACCEPTANCE OF (1) AN OBLITERATED EVIDENCE LOCATION, OR, (2) A FOUND PERPETUATED LOCATION?

(2) A FOUND PERPETUATED LOCATION.

(G&H) WAS THE CORNER REESTABLISHED THROUGH LOST CORNER PROPORTIONATE METHODS? IF SO, SHOW THE METHOD, INCLUDING THE DIRECTIONS AND DISTANCES TO OTHER PUBLIC LAND SURVEY CORNERS USED AS EVIDENCE OR USED FOR PROPORTIONING IN DETERMINING THE CORNER LOCATION.

(G) NO
(H) N/A

AFFIX LAND SURVEYOR SEAL



(I) I, WESLEY L. KRAEMER, PLS-3026, CERTIFY THAT THE CORNER LOCATION SHOWN ON THIS RECORD WAS DETERMINED BY ME OR UNDER MY DIRECTION AND CONTROL AND THAT THIS U.S. PUBLIC LAND SURVEY MONUMENT RECORD IS CORRECT AND COMPLETE TO THE BEST OF MY KNOWLEDGE AND BELIEF.

Wes Kraemer
SIGNATURE

6/5/2017
DATE

21701070000

I, William C. Jung, do hereby certify that on the 20 th day of August 19 82, I found (evidence) ~~(no evidence)~~ of the NE corner of Section 18, T 17 N, R 1 W Fourth Principal Meridian, and I re-established said corner according to the Wisconsin Statutes as shown and described hereon.

Dated this 24th day of Feb. 19 83.

William C. Jung

Deputy County Surveyor

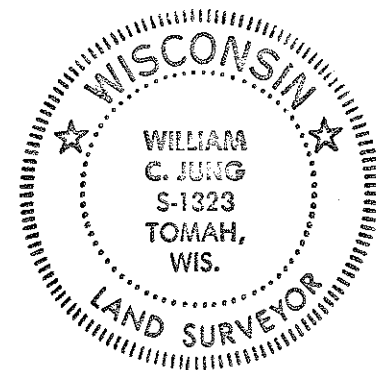
Title

History of corner establishment since Original Government Survey

The old highway map shows this corner being about 1025 feet North of the centerline of Highway "16".

Description of corner evidence found:

I accepted the old occupied corner as the best available evidence of the original government corner. I measure 1026.19 feet North of the highway centerline to this point, and the old highway map calls for 1025 feet+. The old occupied line to the South from this corner fits perfectly all the way to the NW corner of the cemetery and beyond. The NW corner of the cemetery is monumented and dates back to 1879.



COUNTY SURVEYOR FORM NO. 1

Description of corner and witness monuments, references and accessories used to perpetuate the original or re-established location of this corner:

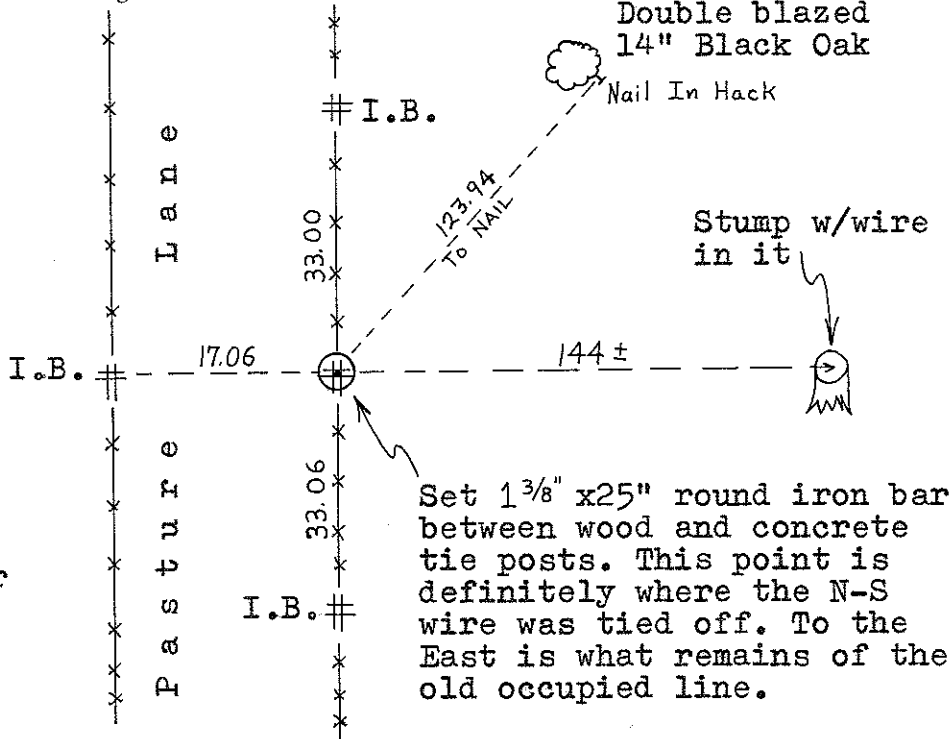
Witnesses to corner location:

William Jung

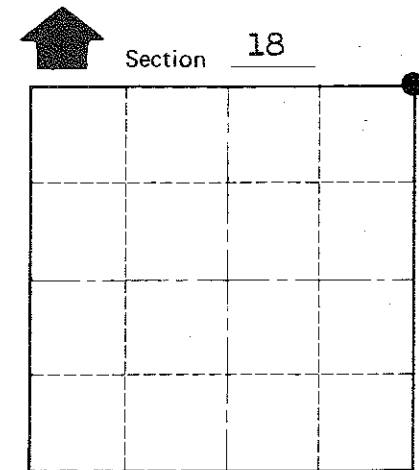
Bryan Meyer

Approved: **HARLEY A. SIME**
MONROE CO. SURVEYOR

= Set 3/4"x24" round iron bar



Set 1 3/8" x 25" round iron bar between wood and concrete tie posts. This point is definitely where the N-S wire was tied off. To the East is what remains of the old occupied line.



• = LOCATION CORNER
T 17 N R 1 W
WISCONSIN

SURVEY CONTROL ORDER

Horizontal	_____
Vertical	_____

WISCONSIN COORDINATE SYSTEM

Corner	East (X)	North (Y)	Elevation (Z)	Zone
Control Sta. Name				

City, Village or Town Tomah
County of Monroe