

16

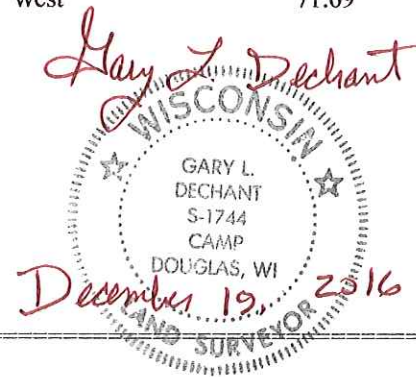
**U.S. PUBLIC LAND CORNER
MAINTENANCE**

**Corner ID : E1/4 Sec.5, T17N-R1W
21701052000**

<u>DATE</u>	<u>CREW</u>	<u>MONUMENT TYPE</u> -----
September 9, 2016	Zachariah P. Dechant Gary L. Dechant	Existing Harrison intact in center line of Butts Ave.

<u>References:</u>	<u>Bearing</u>	<u>Distance</u>
1) Set 3/4"x24" round iron bar, 2' south of SE corner "Tomah High School" sign N50E		71.01'
2) Existing 3/4" round iron bar, west side of power pole	East	31.86' (31.89')
3) Set 3/4"x24" round iron bar, down 6", in lawn 815 Butts Ave	S50W	51.56'
4) Existing 1" iron pipe down 6" under flat concrete block	West	40.03' (40.03') (40.00')
5) Set 3/4"x24" round iron bar, down 4", on line with east end of two car garage 801 Butts Ave	West	71.69'

Harrison and reference markers set on straight lines.



I, Bryan H. Meyer, do hereby certify that on the 26th day of March 1986, I found (evidence) ~~no evidence~~ of the West 1/4 corner of Section 4, T. 17 N, R. 1 W Fourth Principal Meridian, and I re-established said corner according to the Wisconsin Statutes as shown and described hereon.

Dated this 12th day of Dec. 1986.

Bryan H. Meyer
Deputy County Surveyor
Title

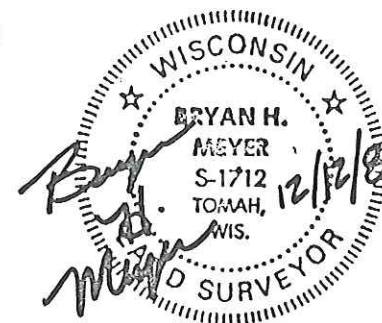
History of corner establishment since Original Government Survey
Webster Kenyon was here in July of 1882 and April of 1890. Henry Schroeder was here in December of 1914. Frank Davy was here in June of 1925. David Blencoe was here in July of 1928 and set a cement block. H. J. Lenschow was here in August of 1945, in August of 1952 and in March of 1957. Harley A Sime was here in August of 1959, July of 1962 and in August of 1964. Mr. Sime set an iron over the cement block which was down 4 feet.

Corner Evidence Found:

I found a 3/4" iron bar in the centerline of Butts Avenue, down 2". This bar fits surrounding plats, therefore I accepted it as the corner.

UPDATE: This corner was established for ties taken prior to road construction. Set Harrison Monument in bituminus pavement at corner location. New ties as shown below.

GAROLD A. SIME, Monroe County Surveyor June 15th, 1990



COUNTY SURVEYOR FORM NO. 1

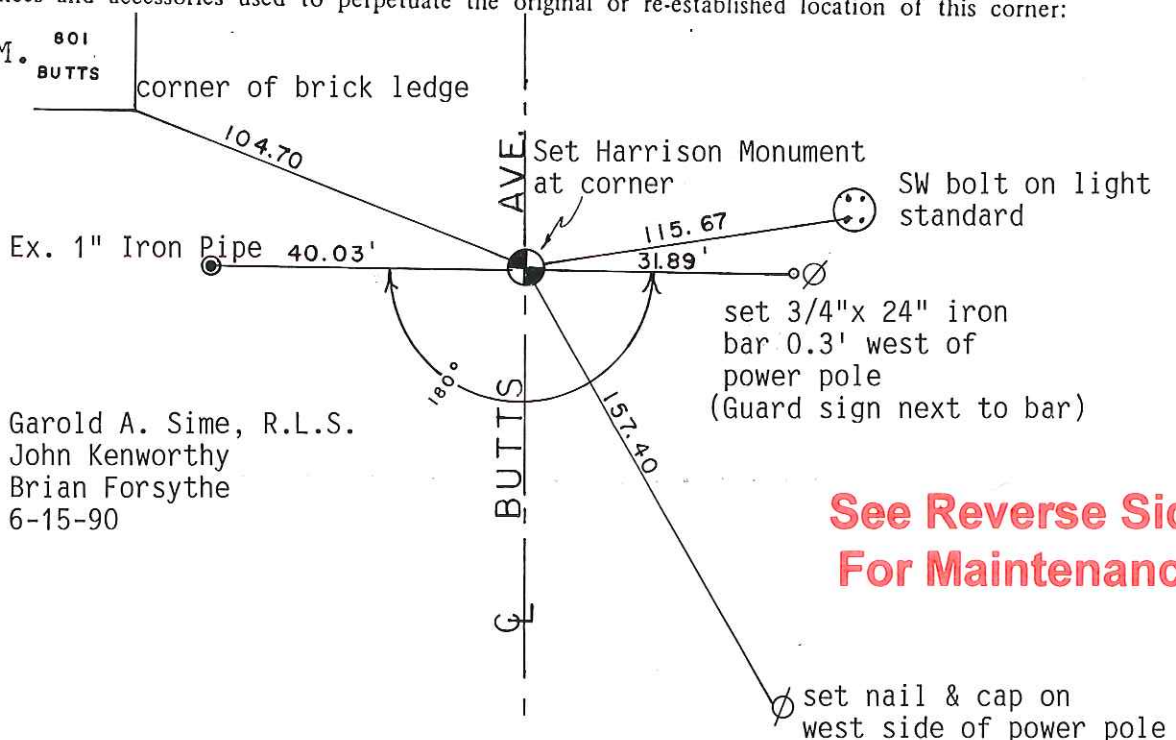
Description of corner and witness monuments, references and accessories used to perpetuate the original or re-established location of this corner:

Crew: Meyer, Wilhite
Date: March 26, 1986 - 11:30 A.M.
Weather: Sunny, Windy
Witnesses to corner location:

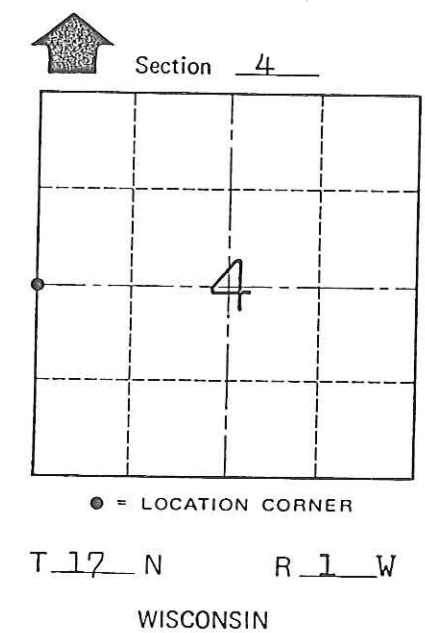
Bryan H. Meyer

Dallas Wilhite

Crew: Garold A. Sime, R.L.S.
John Kenworthy
Brian Forsythe
6-15-90



See Reverse Side For Maintenance



SURVEY CONTROL ORDER

Horizontal	_____
Vertical	_____

WISCONSIN COORDINATE SYSTEM

Corner	East (X)	North (Y)	Elevation (Z)	Zone
Control Sta. Name				

City, ~~Village or Town~~ of Tomah

County of Monroe

I, Bryan H. Meyer, do hereby certify that on the 26th day of March 1986, I found (evidence) ~~(no evidence)~~ of the West 1/4 corner of Section 4, T 17 N, R 1 W Fourth Principal Meridian, and I re-established said corner according to the Wisconsin Statutes as shown and described hereon.

Dated this 12th day of Dec. 1986.

Bryan H. Meyer
Deputy County Surveyor
Title

History of corner establishment since Original Government Survey
 Webster Kenyon was here in July of 1882 and April of 1890. Henry Schroeder was here in December of 1914. Frank Davy was here in June of 1925. David Blencoe was here in July of 1928 and set a cement block. H. J. Lenschow was here in August of 1945, in August of 1952 and in March of 1957. Harley A Sime was here in August of 1959, July of 1962 and in August of 1964. Mr. Sime set an iron over the cement block which was down 4 feet_±.

Corner Evidence Found:

I found a 3/4" iron bar in the centerline of Butts Avenue, down 2". This bar fits surrounding plats, therefore I accepted it as the corner.



See Reverse Side For Maintenance

COUNTY SURVEYOR FORM NO. 1

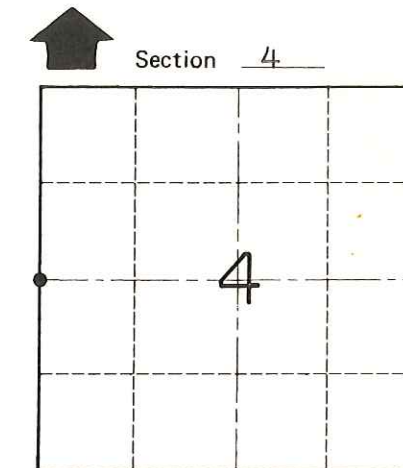
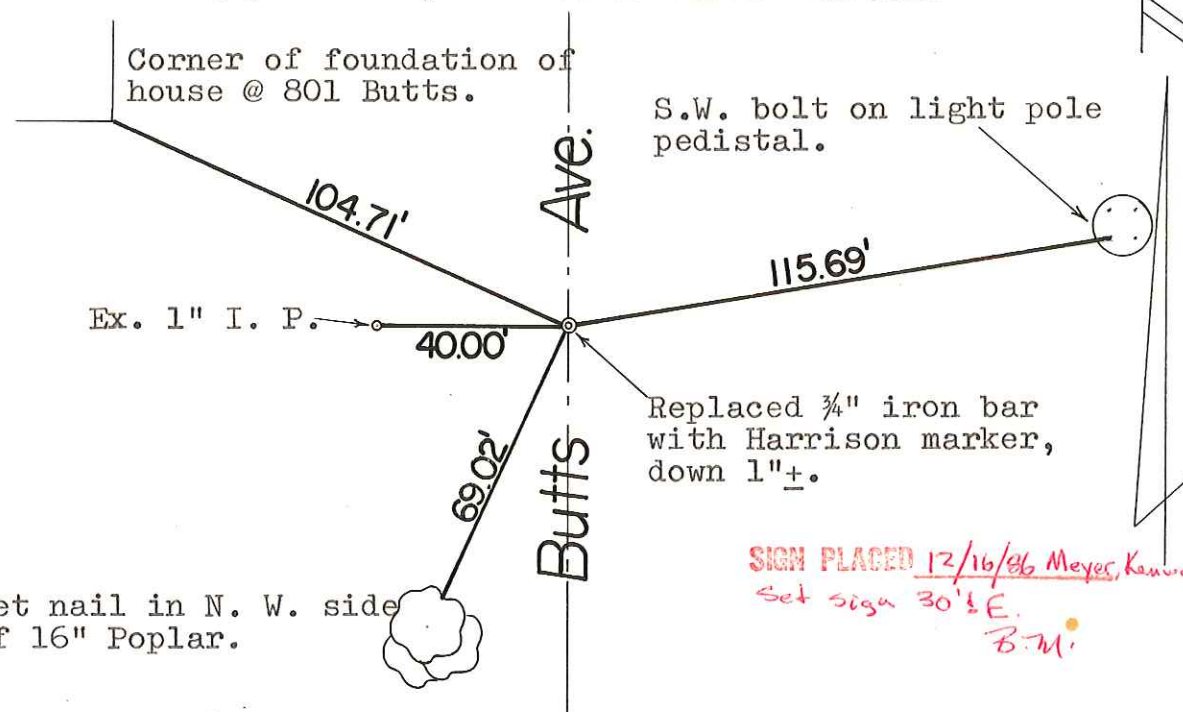
Description of corner and witness monuments, references and accessories used to perpetuate the original or re-established location of this corner:

Crew: Meyer, Wilhite
 Date: March 26, 1986 - 11:30 A.M.
 Weather: Sunny, Windy
 Witnesses to corner location:

Bryan H. Meyer

Dallas Wilhite

** See New Tie Sheet
 of Adams 9-21-90*



● = LOCATION CORNER
 T 17 N R 1 W
 WISCONSIN

*SIGN PLACED 12/16/86 Meyer, Kanworthy
 Set sign 30'± E.
 B.M.*

SURVEY CONTROL ORDER

Horizontal	_____
Vertical	_____

WISCONSIN COORDINATE SYSTEM

Corner	East (X)	North (Y)	Elevation (Z)	Zone
Control Sta. Name				

City, ~~Village or Town~~ of Tomah
 County of Monroe