

29

**U.S. PUBLIC LAND CORNER
MAINTENANCE**

Corner ID : SE Sec. 5 T17N-R1W

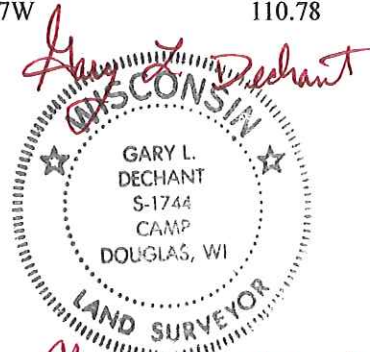
21701050000

<u>DATE</u>	<u>CREW</u>	<u>MONUMENT TYPE -----</u>
August 17, 2016	Zachariah P.Dechant Gary L. Dechant	Existing Cast Iron County Monument intact. 33' south of Butts Ave/ Grassman St intersection

References:

	<u>Bearing</u>	<u>Distance</u>
1) Set 3/4"x24" round iron bar, down 6", 20 west of SW corner of house	N31E	86.64'
2) Set 3/4"x24 round iron bar, 7' east of chain link fence, 8' north of gate	S47E	64.24'
3)Existing 3/4" round iron bar, at south end of gate, 1/2' west of post	S24E	86.40' (86.40')
4) Existing 3/4" round iron bar 1/2' east of chain link fence post	West	39.35' (39.35")
5) Set 3/4"x24" round iron bar, down 6", 8' east of 14" Spruce	N47W	110.78

Harrison and reference markers 2 and 5 set on straight line.



November 29, 2016

I, W. C. Jung, do hereby certify that on the 25th day of September 1979, I found (evidence) ~~(no evidence)~~ of the Southwest corner of Section 4, T 17 N, R 1 W Fourth Principal Meridian, and I re-established said corner according to the Wisconsin Statutes as shown and described hereon.

Dated this 30th day of Dec. 1980.

William C. Jung

William C. Jung
Title

R.L.S. 1323

History of corner establishment since Original Government Survey

A Surveyor was here on April 24, 1890. A Surveyor was also here on Sept. 19, 1887. H. A. Sime shows an iron pipe here in June of 1965. F. Zietlow found an iron pipe here in August of 1971. A Surveyor from this office (H. A. Sime and Associates, Tomah, Wi.) replaced the iron pipe with an iron bar, thought to have been reset in 1973.

Description of corner evidence found:

Removed a 3/4" iron bar and replaced it with a Harrison Monument, flush with the pavement. Accepted the corner of record.

CONTINUED HISTORY:

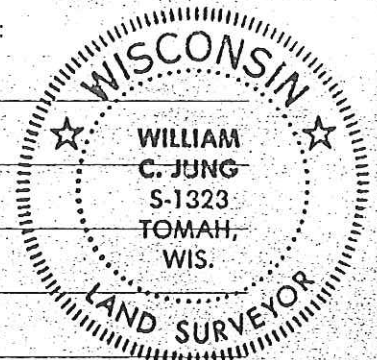
A surveyor was at this corner in July, 1882. A surveyor shows a 5/8" rod at this corner in July, 1928. Sime shows an iron pipe at this corner in December, 1963. He used this corner in three surveys in 1965. Duane Marten shows an iron pipe at this corner in February of 1971 and an iron bar in February of 1974. He also used this corner in surveys of May and July, 1972. Henry Lenschow used this corner in his survey of October, 1972. This corner has been obviously used in many surveys, several of which are not recorded.

Description of corner and witness monuments, references and accessories used to perpetuate the original or re-established location of this corner:

Removed a 3/4" iron bar and replace it with a Harrison marker, flush with the pavement.

Witnesses to corner location:

Jung
Tormoen



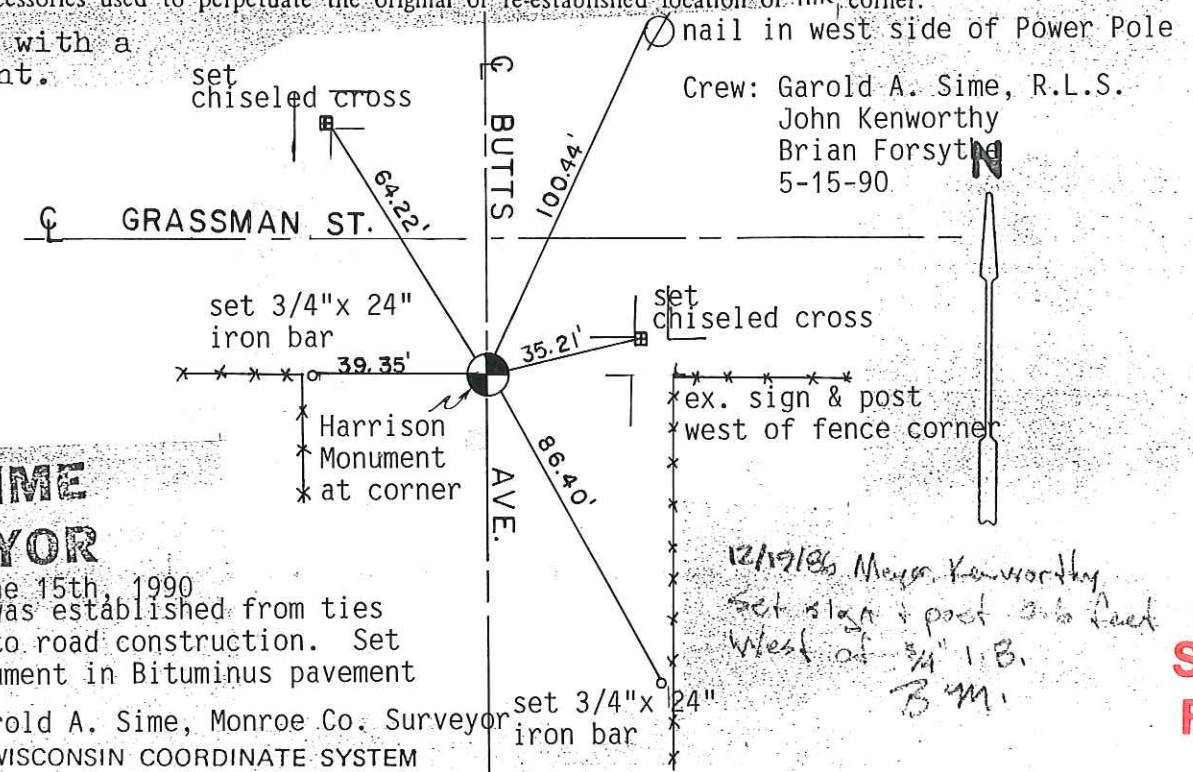
Approved: **HARLEY A. SIME**
MONROE CO. SURVEYOR

UPDATE: This corner was established from ties taken prior to road construction. Set Harrison Monument in Bituminus pavement at corner. Garold A. Sime, Monroe Co. Surveyor
June 15th, 1990
WISCONSIN COORDINATE SYSTEM

SURVEY CONTROL ORDER

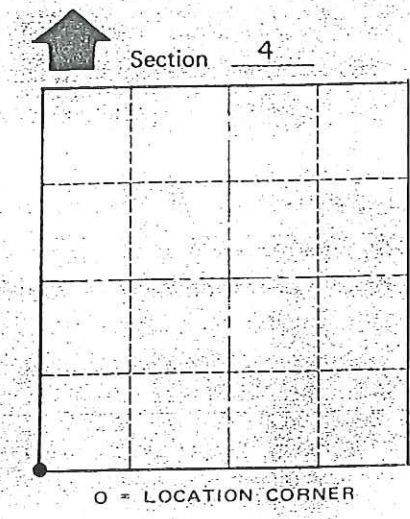
Horizontal _____
Vertical _____

Corner	East (X)	North (Y)	Elevation (Z)	Zone
Control Sta. Name				



Crew: Garold A. Sime, R.L.S.
John Kenworthy
Brian Forsyth
5-15-90

12/19/86 Mayor Kenworthy set sign & post 3 1/2 feet west of 3/4" I.B. B.M.



T 17 N R 1 W
WISCONSIN

See Reverse Side For Maintenance

CITY OF Tomah
County of Monroe

COUNTY SURVEYOR FORM NO. 1

I, W. C. Jung, do hereby certify that on the 25th day of September 1979, I found (evidence) ~~(no evidence)~~ of the Southwest corner of Section 4, T 17 N, R 1 W Fourth Principal Meridian, and I re-established said corner according to the Wisconsin Statutes as shown and described hereon.

Dated this 30th day of Dec. 1980.

William C. Jung

William C. Jung
Title
R.L.S. 1323

History of corner establishment since Original Government Survey

A Surveyor was here on April 24, 1890. A Surveyor was also here on Sept. 19, 1887. H. A. Sime shows an iron pipe here in June of 1965. F. Zietlow found an iron pipe here in August of 1971. A Surveyor from this office (H. A. Sime and Associates, Tomah, Wi.) replaced the iron pipe with an iron bar, thought to have been reset in 1973.

Description of corner evidence found:

Removed a 3/4" iron bar and replaced it with a Harrison Monument, flush with the pavement. Accepted the corner of record.

CONTINUED HISTORY:

A surveyor was at this corner in July, 1882. A surveyor shows a 5/8" rod at this corner in July, 1928. Sime shows an iron pipe at this corner in December, 1963. He used this corner in three surveys in 1965. Duane Marten shows an iron pipe at this corner in February of 1971 and an iron bar in February of 1974. He also used this corner in surveys of May and July, 1972. Henry Lenschow used this corner in his survey of October, 1972. This corner has been obviously used in many surveys, several of which are not recorded.

Description of corner and witness monuments, references and accessories used to perpetuate the original or re-established location of this corner:

Removed a 3/4" iron bar and replace it with a Harrison marker, flush with the pavement.

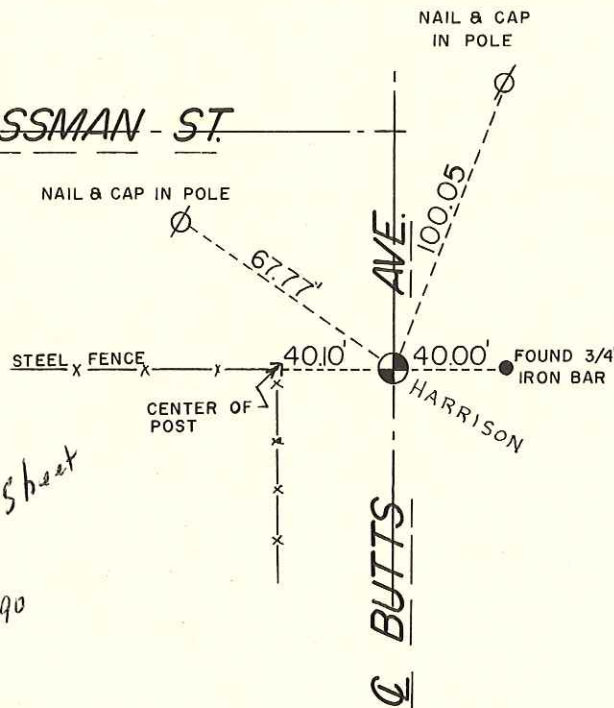
Witnesses to corner location:

Jung
Tormoen

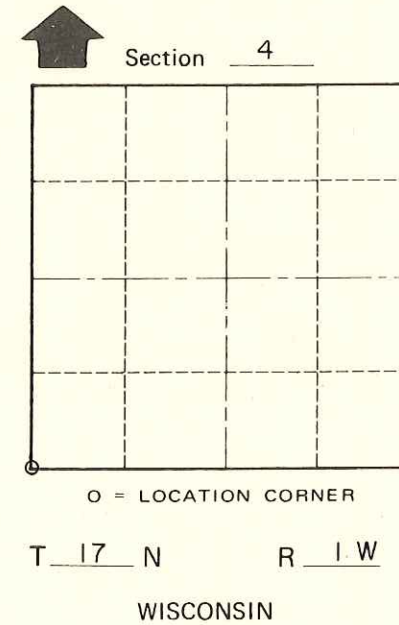


**Approved: HARLEY A. SIME
MONROE CO. SURVEYOR**

** See New Tie Sheet
H. Sime 9-21-90*



**See Reverse Side
For Maintenance**



O = LOCATION CORNER
T 17 N R 1 W
WISCONSIN

*SIGN PLACED 12/19/86 B.S.M.
Mayer, Kenworthy*

SURVEY CONTROL ORDER

Horizontal	_____
Vertical	_____

WISCONSIN COORDINATE SYSTEM

Corner	East (X)	North (Y)	Elevation (Z)	Zone
Control Sta. Name				

 CITY OF Tomah
County of Monroe

COUNTY SURVEYOR FORM NO. 1