

# U.S. LAND CORNER MAINTENANCE

Corner ID : S1/4 Sec. 18, T17N-R1W  
21701180020

DATE	CREW	MONUMENT TYPE -----
September 13, 2013	Zachariah P. Dechant Gary L. Dechant	Found Railroad spike, 6' south centerline of road

References:

	<u>Bearing</u>	<u>Distance</u>
1) Set 3/4"x24" hexagon iron bar, down 6", 8' east of 6" White Pine	N10E	51.20'
2) Set 3/4"x24" hexagon iron bar, down 12"	S45E	39.76'
3) Set 3/4"x24" hexagon iron bar, down 12"	S10W	37.12'
4) Set 3/4"x24" hexagon iron bar, down 6", 4' west of 5" White Pine	N45W	68.01'

Railroad spike and reference markers are on straight lines.  
Offset set railroad spike and removed to see if Harrison was underneath. Harrison gone, reset railroad spike.

*Gary L. Dechant*

*September 13, 2013*

CERTIFICATE

CERTIFIED LAND CORNER

No. 72

21701180020

I, Harley A. Sime, do hereby certify that on the 20<sup>th</sup> day of July 19 79, I found (evidence) ~~(no evidence)~~ of the North 1/4 corner of Section 19, T 17 N, R 1 W, Fourth Principal Meridian, and I re-established said corner according to the Wisconsin Statutes as shown and described hereon.

History of original corner establishment:

O.R. Dahl was at this corner in December of 1870. Fred Zietlow set a 3/4" iron bar at this corner in October of 1971. Jung and Malliet used this bar in a survey of July, 1974. James Carroll used this corner in a survey of May, 1977, as did Larry Feddersen did in a May, 1978 survey.

Description of corner evidence found:

Found the corner of record, removed the iron bar and replaced it with a Harrison marker.

Dated this 24th day of Feb. 1981.

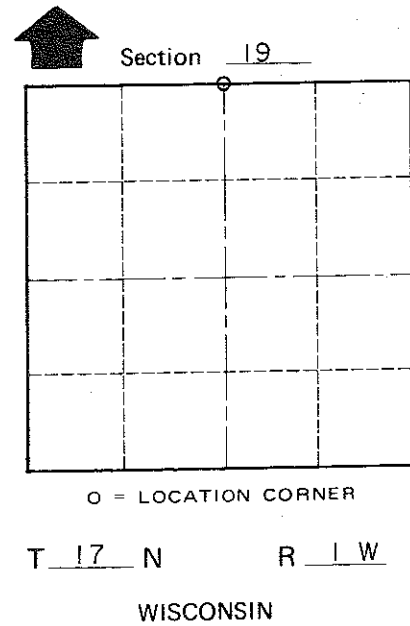
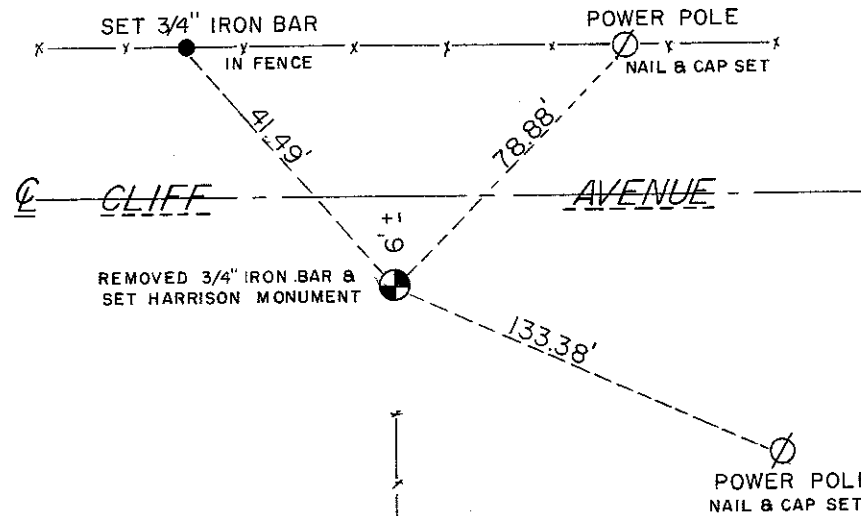
Approved: **HARLEY A. SIME**  
**MONROE CO. SURVEYOR**

COUNTY SURVEYOR FORM NO. 1

Description of corner and witness monuments, references and accessories used to perpetuate the original or re-established location of this corner:

Witnesses to corner location:

Meyer  
Dade



SURVEY CONTROL ORDER

Horizontal	_____
Vertical	_____

WISCONSIN COORDINATE SYSTEM

Corner	East (X)	North (Y)	Elevation (Z)	Zone
Control Sta. Name				

\_\_\_\_\_ or Town Tomah  
County of Monroe