

# U.S. LAND CORNER MAINTENANCE

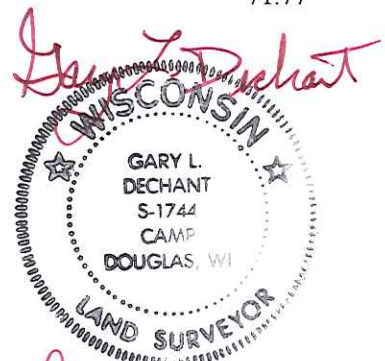
Corner ID : SE Sec. 18, T17N-R1W  
21701180000

DATE	CREW	MONUMENT TYPE -----
September 13, 2013	Zachariah P. Dechant Gary L. Dechant	Found Harrison, top broke off, centerline of road on line with fence running south

References:

	<u>Bearing</u>	<u>Distance</u>
1) Set 3/4"x24" hexagon iron bar, down 6", at SW corner flower garden	N8E	37.91'
2) Set 3/4"x24" hexagon iron bar, down 8"	S58E	59.94'
3) Set 3/4"x24" hexagon iron bar, down 12", 6' west of fence	S8W	34.18'
4) Set 3/4"x24" hexagon iron bar, down 6", 4' north of 14" Ash	N58W	71.77'

Harrison and reference markers are on straight lines.



*September 13, 2013*

CERTIFICATE

CERTIFIED LAND CORNER

No. 71

21701180000

I, Harley A. Sime, do hereby certify that on the 20th day of July 19 79, I found (evidence) ~~(no evidence)~~ of the Northeast corner of Section 19, T 17 N, R 1 W, Fourth Principal Meridian, and I re-established said corner according to the Wisconsin Statutes as shown and described hereon.

Dated this 24th day of Feb. 1981.

Approved: **HARLEY A. SIME**  
**MONROE CO. SURVEYOR**

History of original corner establishment:

O.R. Dahl was at this corner in November of 1868. Fred Holden set an iron pipe at this corner in June of 1910. Fred Zietlow did not find Holden's pipe and set a R.R. spike at the occupied corner in September of 1970. He again used this corner in a October, 1971 survey. Duane Marten used this corner in surveys of November, 1971 and June, 1973.

Description of corner evidence found: The Department of Transportation used this corner in November of 1974.

Found the corner of record, removed the R.R. spike and replaced it with a Harrison marker.

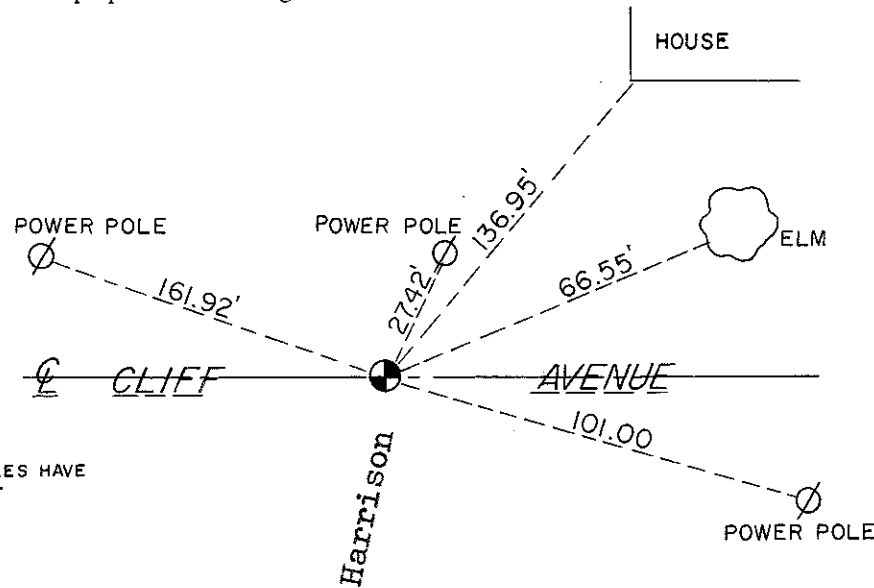
COUNTY SURVEYOR FORM NO. 1

Description of corner and witness monuments, references and accessories used to perpetuate the original or re-established location of this corner:

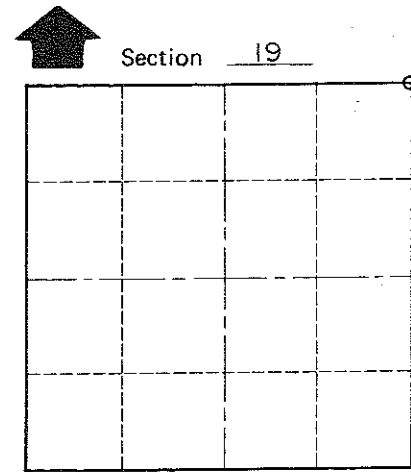
Removed Railroad Spike and set Harrison Monument.

Witnesses to corner location:

Meyer  
Dade



NOTE: ALL POWER POLES HAVE NAIL & CAP SET



T 17 N R 1 W  
WISCONSIN

SURVEY CONTROL ORDER

Horizontal	_____
Vertical	_____

WISCONSIN COORDINATE SYSTEM

Corner	East (X)	North (Y)	Elevation (Z)	Zone
Control Sta. Name				

\_\_\_\_\_ or Town Tomah  
County of Monroe