

# 69

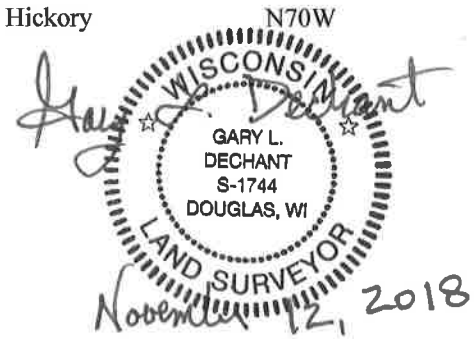
**U.S. PUBLIC LAND CORNER  
MAINTENANCE**

**Corner ID : SW Sec.16, T17N-R1W  
21701170000**

| <u>DATE</u>      | <u>CREW</u>                             | <u>MONUMENT TYPE</u> -----  |
|------------------|---|---|
| November 7, 2018 | Zachariah P. Dechant<br>Gary L. Dechant | Existing Harrison intact, up 8" with stones around it, at<br>3-way fence corner |

References:

|   | <u>Bearing</u> | <u>Distance</u> |
|---|----------------|-----------------|
| 1) Set 1"x24" iron pipe, down 4", 4' east of 12" Hickory (1978 BT)<br>tree roots grown over old sign post | N27E           | 8.85'           |
| 2) Set 3/4"x24" round iron bar, down 4", 4' NW of 5" White Oak  | S38E           | 11.43'          |
| 3) Set 1/2"x8" steel punch, down 4" in pasture  | S34W           | 17.58'          |
| 4) Set 3/4"x24" round iron bar, down 4", 11' east of 14" Hickory  | N70W           | 19.80'          |



I, William C. Jung, do hereby certify that on the 5th day of July, 19 78, I found (evidence) (~~no evidence~~) of the SW Section corner of Section 16, T 17 N, R 1 W Fourth Principal Meridian, and I re-established said corner according to the Wisconsin Statutes as shown and described hereon.

Dated this 16th day of Aug., 19 78.

William C. Jung, R.L.S. 1323

Crew Chief, County Surveyor's  
Title Office

History of original corner establishment:  
O.R. Dahl was at this corner in November of 1868.

Description of corner evidence found:  
Accepted fence corner as the best available evidence. ( Found stake w/ tack set by Hwy Com Surveyors @ R.R. tie post. Replaced with 1 1/4" x 30" I.B. on 10/21/78 )

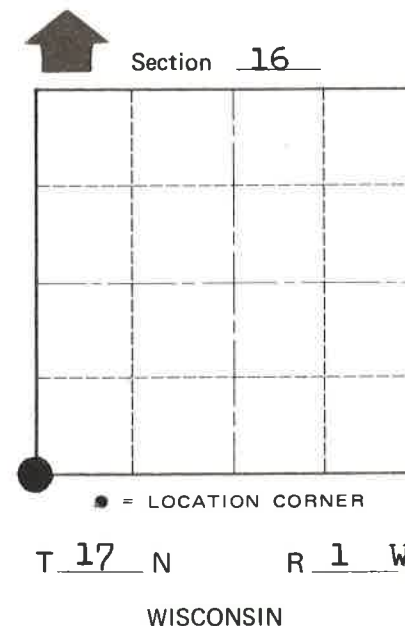
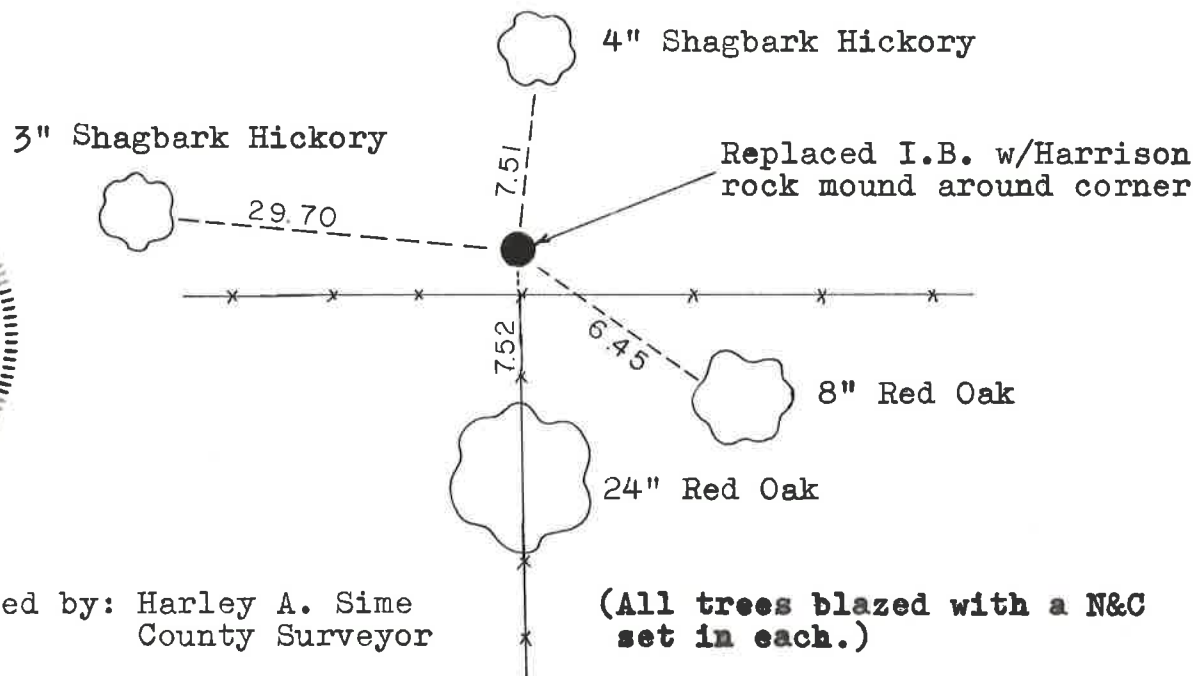
**See Reverse Side For Maintenance**

Description of corner and witness monuments, references and accessories used to perpetuate the original or re-established location of this corner:

Witnesses to corner location:

G. Dechant

D. Dade



SURVEY CONTROL ORDER

|            |       |
|------------|-------|
| Horizontal | _____ |
| Vertical   | _____ |

Approved by: Harley A. Sime  
County Surveyor

WISCONSIN COORDINATE SYSTEM

| Corner            | East (X) | North (Y) | Elevation (Z) | Zone |
|-------------------|----------|-----------|---------------|------|
| Control Sta. Name |          |           |               |      |

City, Village or Town Tomah  
County of Monroe

COUNTY SURVEYOR FORM NO. 1