

57

**U.S. PUBLIC LAND CORNER
MAINTENANCE**

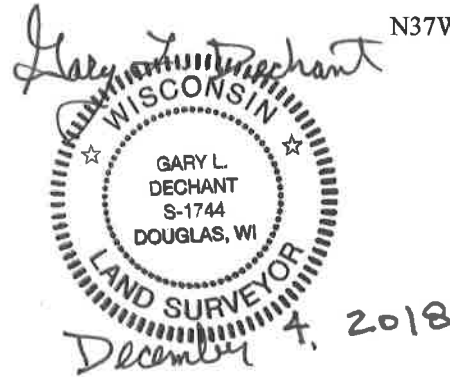
Corner ID : E1/4 Sec.16, T17N-R1W

21701162000

<u>DATE</u>	<u>CREW</u>	<u>MONUMENT TYPE -----</u>
November 29, 2018	Zachariah P. Dechant Gary L. Dechant	Existing Harrison intact, SW of RR tie fence post & sign. Approximately 5' north of center of power line. Harrison facing south (1978 field crew rookies). Fits 1978 BT, 15", (now 24") Black Oak, 75.88, to NW with blaze scars.

References:

	<u>Bearing</u>	<u>Distance</u>
1) Set 3/4"x24" round iron bar, down 10" in field	N65E	14.35'
2) Set 3/4"x24" round iron bar, down 10" in field	S38E	17.87'
3) Set 3/4"x24" round iron bar, down 6", 4' NE of 8" Ash	SW	64.40'
4) Set 3/4"x24" round iron bar, down 6"	N37W	28.25'



I, William C. Jung, do hereby certify that on the 5th day of July 19 78, I found (evidence) (~~no evidence~~) of the E¹/₄ corner of Section 16, T 17 N, R 1 W Fourth Principal Meridian; and I re-established said corner according to the Wisconsin Statutes as shown and described hereon.

Dated this 12th day of Dec. 1978.

~~William C. Jung, R.L.S. 1323~~

~~County Surveyor's Office~~

History of original corner establishment:
 No known recorded history since the original government survey.

Description of corner evidence found:
 On October 21, 1976, I found a 2" iron pipe at a fence corner. It had been used in previous work. Replaced the iron pipe with a Harrison.

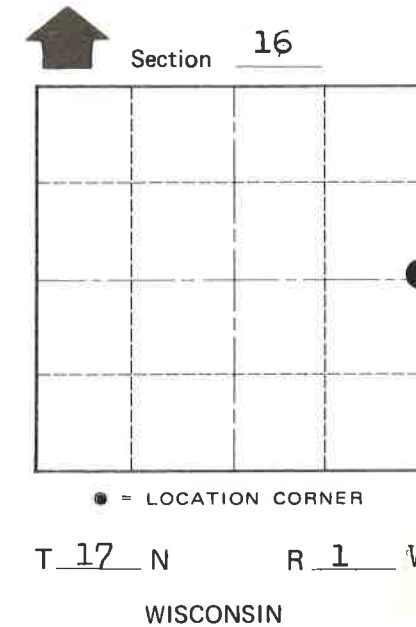
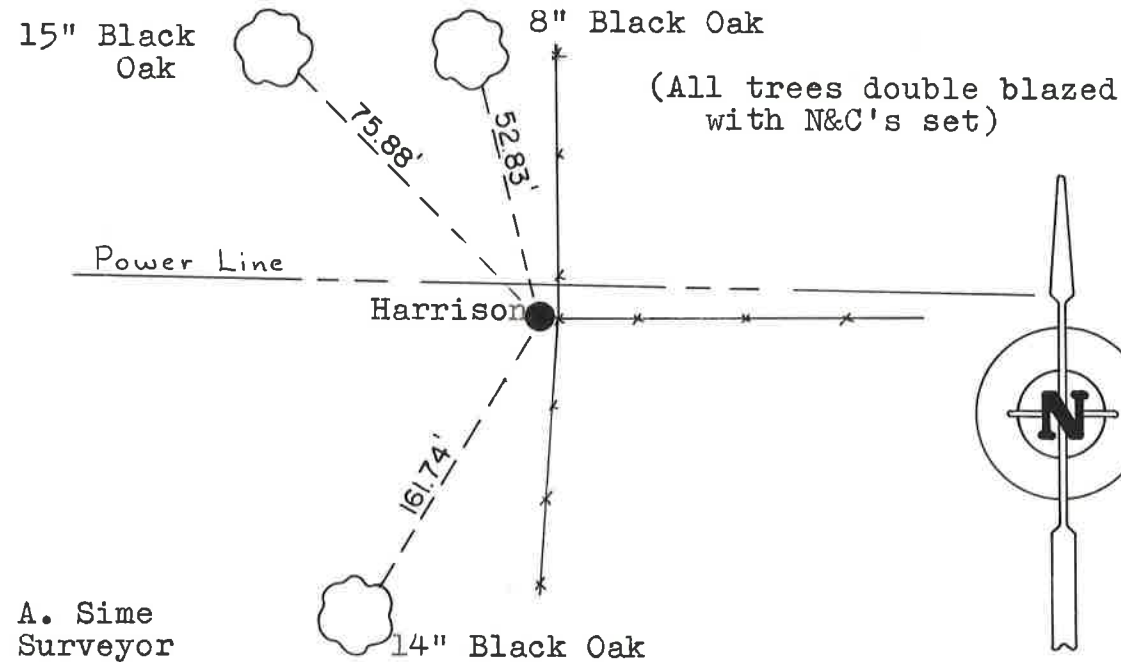
**See Reverse Side
For Maintenance**

Description of corner and witness monuments, references and accessories used to perpetuate the original or re-established location of this corner:

Witnesses to corner location:

G. Dechant

D. Dade



SURVEY CONTROL ORDER

Horizontal	_____
Vertical	_____

Approved by: Harley A. Sime
County Surveyor

WISCONSIN COORDINATE SYSTEM

Corner	East (X)	North (Y)	Elevation (Z)	Zone
Control Sta. Name				

City, Village or Town Tomah

County of Monroe

COUNTY SURVEYOR FORM NO. 1