

67

**U.S. PUBLIC LAND CORNER
MAINTENANCE**

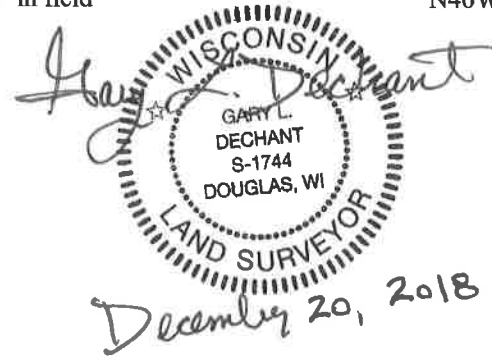
Corner ID : SE Sec.16, T17N-R1W

21701160000

<u>DATE</u>	<u>CREW</u>	<u>MONUMENT TYPE</u> -----
November 12, 2018	Zachariah P.Dechant Gary L. Dechant	Found Harrison, top broke off, down 12". Set sign 2' west.

References:

	<u>Bearing</u>	<u>Distance</u>
1) Set 3/4"x24" round iron bar, down 10" in field	N18E	20.61'
2) Set 3/4"x24" round iron bar, down 6", 6' NE of 12" Black Cherry	S60E	27.87'
3) Set 3/4"x24" round iron bar, down 10" in field	S50W	19.07'
4) Set 3/4"x24" round iron bar, down 10" in field	N46W	22.46'



I, Harley A. Sime, do hereby certify that on the 1 day of November 19 76, I found (evidence) ~~#####~~ of the SE corner of Section 16, T. 17 N, R. 1 W, Fourth Principal Meridian, and I re-established said corner according to the Wisconsin Statutes as shown and described hereon.

Dated this 16th day of March 19 77.

History of original corner establishment:

See Reverse Side For Maintenance

Description of corner evidence found:

Set in the occupied fence line and at a distance from the E $\frac{1}{4}$ corner equivalent to the distance along the East line of the NE $\frac{1}{4}$. Further field investigation showed that this fit an old "20" fence to the North.

County Surveyor
Title

**Approved: HARLEY A. SIME
MONROE CO. SURVEYOR**

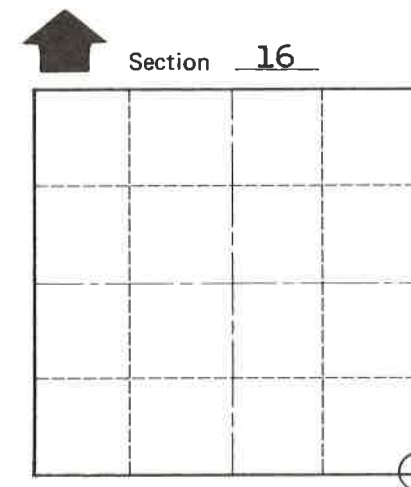
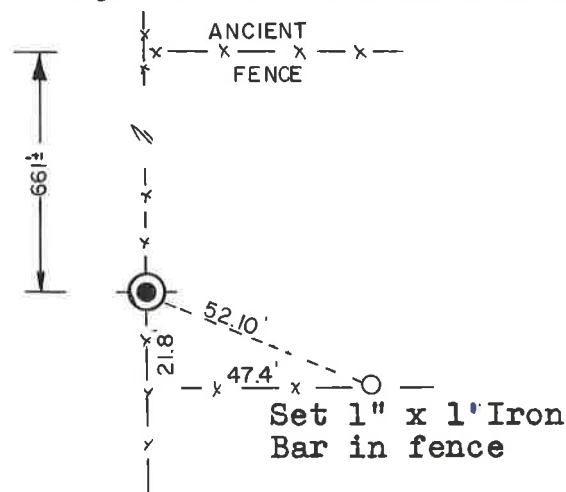
Description of corner and witness monuments, references and accessories used to perpetuate the original or re-established location of this corner:

Set Harrison Monument up 2"

Witnesses to corner location:

William C. Jung

Bruce Rassmussen



O = LOCATION CORNER
T 17 N R 1 W
WISCONSIN

SURVEY CONTROL ORDER

Horizontal	_____
Vertical	_____

WISCONSIN COORDINATE SYSTEM

Corner	East (X)	North (Y)	Elevation (Z)	Zone
Control Sta. Name				

~~City/Village/Town~~ Town Tomah

County of Monroe

COUNTY SURVEYOR FORM NO. 1