

# 66

**U.S. PUBLIC LAND CORNER  
MAINTENANCE**

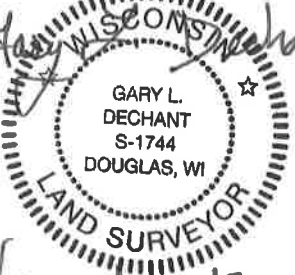
**Corner ID : N1/4 Sec.22, T17N-R1W**

**21701150020**

<u>DATE</u>	<u>CREW</u>	<u>MONUMENT TYPE</u> -----
November 2, 2018	Zachariah P. Dechant Gary L. Dechant	Existing Harrison intact, flush with ground, set sign 2' north. 42' SW of ravine

References:

	<u>Bearing</u>	<u>Distance</u>
1) Set 3/4"x24" round iron bar, down 6", set flat stone over bar, 8' west of Humungus Black Oak	N12E	17.62'
2) Set 3/4"x24" round iron bar, down 6", set flat stone over bar in old cow path	S43E	28.07'
3) Set 3/4"x24" round iron bar, down 6", set flat stone over bar	S28W	14.04'
4) Set 3/4"x24" round iron bar, down 6", set flat stone over bar in old cow path	N40W	23.79'

*Gary L. Dechant*  
  
*November 12, 2018*

I, Gary L. Dechant, do hereby certify that on the 3rd day of September 1985, I found (evidence) ~~(no evidence)~~ of the N<sup>1</sup>/<sub>4</sub> corner of Section 22, T 17 N, R 1 W Fourth Principal Meridian, and I re-established said corner according to the Wisconsin Statutes as shown and described hereon.

Dated this 5th day of Sept. 1985.

Gary L. Dechant  
Registered Land Surveyor-1744  
Title

**History of corner establishment since Original Government Survey**

No known history since the original government survey.

**Description of corner evidence found:**

Set corner on line between section corners and in line with the existing north-south fence.

**See Reverse Side For Maintenance**

COUNTY SURVEYOR FORM NO. 1

Description of corner and witness monuments, references and accessories used to perpetuate the original or re-established location of this corner:  
Set Harrison Monument flush with ground, South side of cow path.

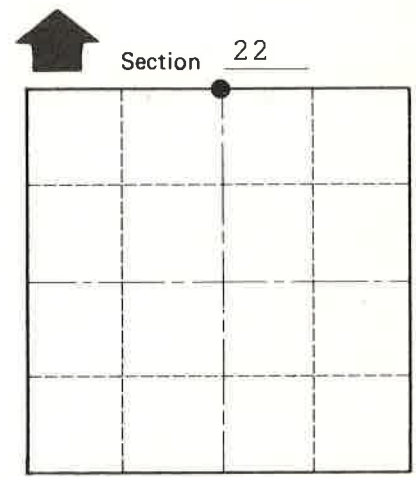
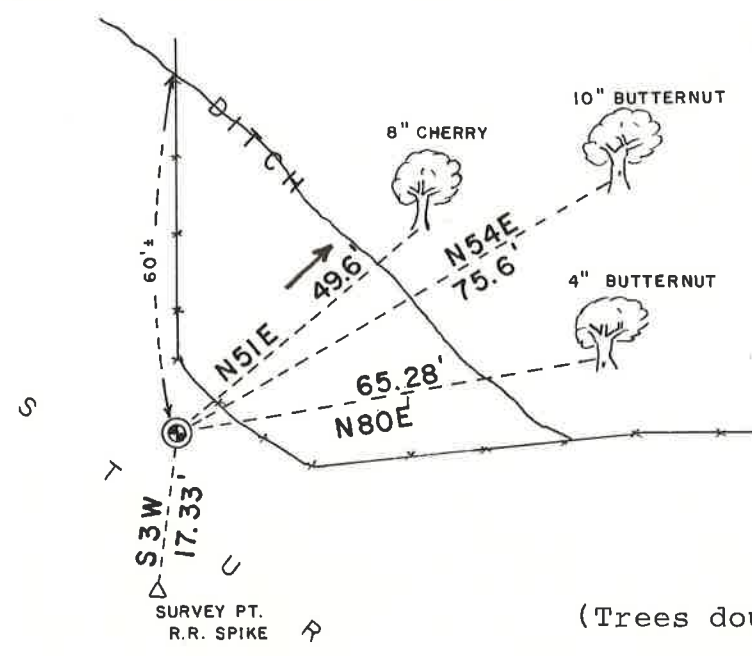
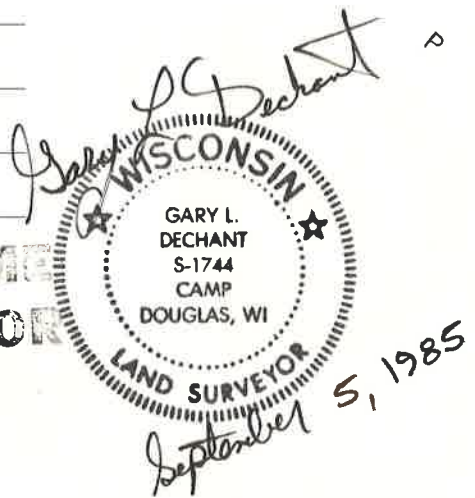
Witnesses to corner location:

WEATHER: HOT & STINKY!

Lawrence A. Feddersen S-1226

Gary L. Dechant

**Approved: HARLEY A. SIMPSON**  
**MONROE CO. SURVEYOR**



● = LOCATION CORNER  
T 17 N R 1 W  
WISCONSIN

(Trees double blazed with N&C's set)

**SURVEY CONTROL ORDER**

Horizontal	_____
Vertical	_____

**WISCONSIN COORDINATE SYSTEM**

Corner	East (X)	North (Y)	Elevation (Z)	Zone
Control Sta. Name				

City, Village or Town Tomah  
County of Monroe