

# 59

**U.S. PUBLIC LAND CORNER  
MAINTENANCE**

**Corner ID : W1/4 Sec.13, T17N-R1W  
21701142000**

<u>DATE</u>	<u>CREW</u>	<u>MONUMENT TYPE</u> -----
November 12, 2018	Zachariah P. Dechant Gary L. Dechant	Harrison intact at fence corner. Set sign 1' north.

References:

	<u>Bearing</u>	<u>Distance</u>
1) Set 3/4" round iron bar, down 4", between two large stones	N66E	8.93'
2) Set 3/4"x24" round iron bar, down 4", SE side of large flat stone	S36E	19.80'
3) Set 3/4"x24" round iron bar, down 4"	S56W	20.15'
4) Set 3/4"x24" round iron bar, down 4", east side of large flat stone	N80W	28.90'



December 9, 2018

I, Garold A. Sime, do hereby certify that on the 29<sup>th</sup> day of December 19 77, I found (evidence) (~~no evidence~~) of the W<sup>1</sup>/<sub>4</sub> corner of Section 13, T 17 N, R 1 W Fourth Principal Meridian, and I re-established said corner according to the Wisconsin Statutes as shown and described hereon.

Dated this 19<sup>th</sup> day of Jan. 1981

Garold A. Sime  
Title R.L.S. 1261

History of corner establishment since Original Government Survey

Fred Holden was here in October of 1908.  
Kenyon reset the corner in November of 1887.

**See Reverse Side  
For Maintenance**

Description of corner evidence found:

G. Sime set a hexagon iron bar here in Dec. of 1977.  
B. Meyer and M. Scott Sowers found the iron bar in July of 1980 and replaced it with a Harrison Monument.  
The occupied fence corner was accepted as the best available evidence of the original government corner.

Description of corner and witness monuments, references and accessories used to perpetuate the original or re-established location of this corner:

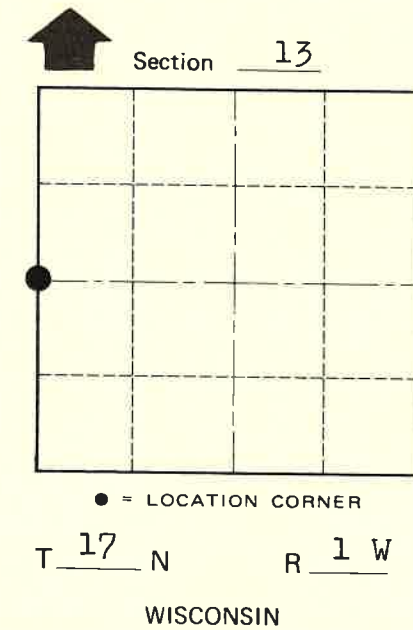
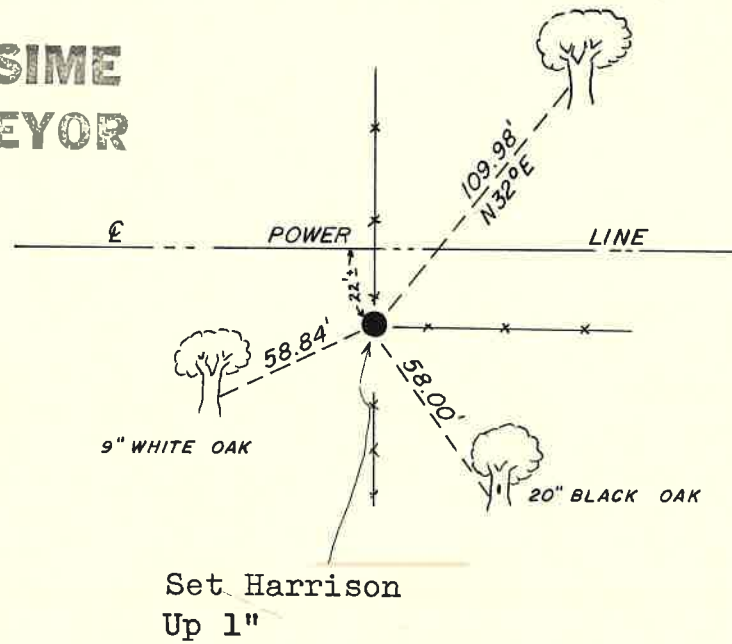
**Approved: HARLEY A. SIME  
MONROE CO. SURVEYOR**

Witnesses to corner location:

G. Sime

B. Meyer

M. Scott Sowers



All trees are double blazed with N&C set; all distances are slope chained

Set Harrison  
Up 1"

SURVEY CONTROL ORDER

Horizontal	_____
Vertical	_____

WISCONSIN COORDINATE SYSTEM

Corner	East (X)	North (Y)	Elevation (Z)	Zone
Control Sta. Name				

~~City, Village~~ or Town Tomah

County of Monroe

COUNTY SURVEYOR FORM NO. 1